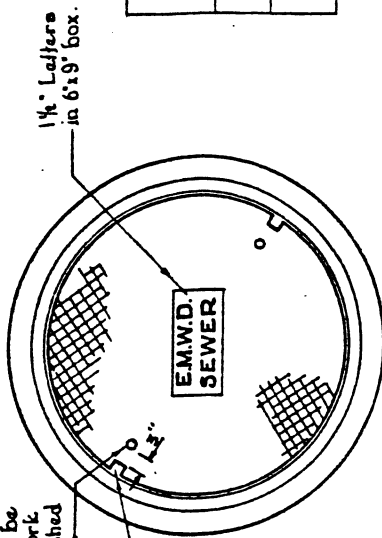


Pick-holes (1) to be plugged with cork stopper furnished by Contractor.

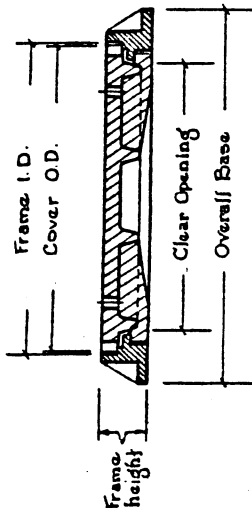


MANHOLE COVER & FRAME REQUIRED DIMENSIONS.				
Clear Opening	Cover O.D.	Frame I.D.	Frame Height	Overall Base
22 3/4"	24"	24 1/4"	4 1/8"	30 1/4"
				Total Wt. 365 lbs.

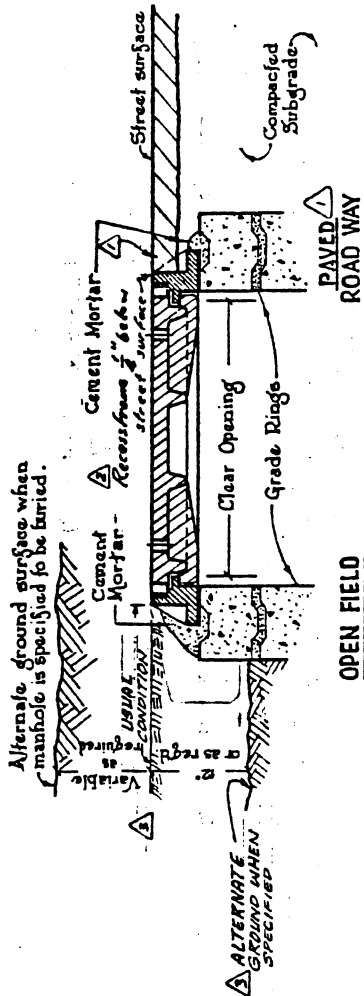
NOTES

1. Manhole cover shall be designed for A.A.S.H.O. H-20 loading.
2. Cast iron shall have min. tensile strength of 30,000 lb per sq. in.
3. Manhole cover shall be Alhambra Foundry Co. Type A-1115 for 22 3/4" dia. (Castig 17-Mar-65) or approved eqval.
4. Marker posts shall be installed to mark manhole locations in unimproved areas.

TOP VIEW



SECTION



SECTION THRU FRAME SHOWING TYPICAL INSTALLATION

REVISIONS		REFERENCES		APPROVALS	
NO.	DATE	INITIAL	DESCRIPTION	DESIGN	CONSTRUCTION/OPERATIONS
1	1-14-72	MAM	Revised cover mortar detail on paved roadway		
2	12-29-74	LAM	Added Alt. No. 2 Cellular & excess		
3	3-21-85	G.H.	Removed Conc. Collar & other per. CR 1/2 Dull		
				J.H.A.	J.H.A.

EASTERN MUNICIPAL WATER DISTRICT		APPROVED	
RIVERSIDE COUNTY, CALIFORNIA		GENERAL MANAGER & CHIEF ENGINEER	
STANDARD DRAWING		5B-8	
LOCKING TYPE			
MANHOLE COVER AND FRAME			

DIRT ROADWAY OR ROADWAY SHOULDER

USE A.C. APPROVED OR ALL UNIMPROVED ROADS - (Std. DWG. 54-47)