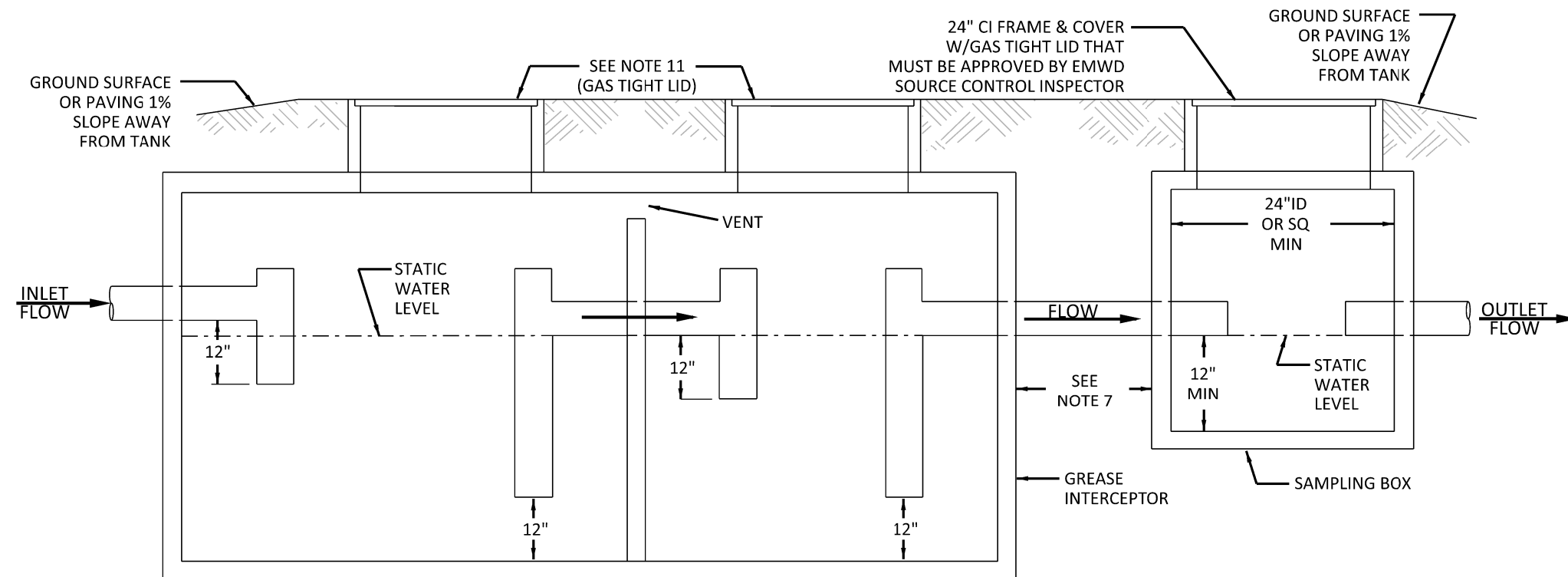



PLAN VIEW



PROFILE VIEW

NOTES:

1. STRUCTURES SHALL BE INSTALLED TO ALLOW ACCESS FOR MAINTENANCE OR INSPECTION AT ALL TIMES.
2. WHERE SUBJECT TO VEHICLE LOADING, DESIGN ADEQUACY SHALL BE SUBSTANTIATED AND STRUCTURE SHALL BE PLACED ON SUITABLE BASE OF COMPACTED SOIL OR UNDISTURBED EARTH.
3. ALL SURFACE WATER MUST DRAIN AWAY FROM THE SAMPLING BOX AND INTERCEPTOR TO EXCLUDE RAIN WATER FROM THE SEWER SYSTEM.
4. FLOW TO THE SAMPLING BOX AND/OR INTERCEPTOR SHALL EXCLUDE ALL SANITARY SEWAGE AND SURFACE DRAINAGE.
5. EACH INSTALLATION IS SUBJECT TO REVIEW BY EMWD FOR ADEQUATE CAPACITY PRIOR TO CONSTRUCTION.
6. INSPECTION COVERS SHALL BE BROUGHT TO GRADE TO PERMIT VISUAL INSPECTION OF INTERNAL FITTINGS, WITH RISERS AS REQUIRED.
7. SAMPLING BOX SHALL BE A MINIMUM OF 24" ID OR 24" SQUARE AND MUST RETAIN A STATIC WATER LEVEL OF 12". SAMPLING BOX MAY BE ATTACHED OR AT A VARIABLE DISTANCE FROM THE INTERCEPTOR AND MUST BE APPROVED BY EMWD SOURCE CONTROL INSPECTOR.
8. EACH CHAMBER SHALL HAVE A GAS TIGHT, TRAFFIC RATED, PICKABLE METAL INSPECTION COVER WITH A MINIMUM DEMENSION OF 24" ID OR 24" SQUARE AND MUST BE APPROVED BY EMWD SOURCE CONTROL INSPECTOR.
9. MINIMUM CAPACITY OF INTERCEPTOR IS 750 GALLONS.
10. TWO (2) CHAMBER INTERCEPTOR IS ACCEPTABLE.
11. INTERCEPTORS REQUIRING MORE THAN 8 FEET OF GRADE RINGS MUST HAVE APPROVAL OF EMWD BEFORE INSTALLATION.

REVISIONS						APPROVALS			EASTERN MUNICIPAL WATER DISTRICT STANDARD DRAWING					
NO.	DATE	INITIAL	DESCRIPTION	APP'D	DATE	DESIGN	INITIAL	DATE	 GREASE INTERCEPTOR WITH 24" SAMPLE BOX					
4	7/2/19	GS	REVISED FONT	AGA	7/2/19	CONSTRUCTION					APPROVED <u>Joseph D. Sickle</u> <u>1/16/91</u> <small>ASSISTANT GENERAL MANAGER DATE</small>			
3	3/27/18	GS	REVISED NOTES 7, 8, & 10, REMOVED NOTE 11, UPDATED LOGO	AGA	3/27/18	INSPECTION			SB-70					
2	2/13/15	GS	REVISED PLAN & PROFILE, NOTE 11 AND UPDATED CALLOUTS	AGA	2/13/15	OPERATIONS	JAG	1/10/91					RECOMMENDED _____ <small>DIRECTOR OF ENGINEERING DATE</small>	
1	2/19/99	GR	REDRAWN W/CADD & COMBINED W/SB-156	VJB	5/6/99	SUBMITTED								
REFERENCES: SUPERCEDES SB-156				SCALE: NONE										
FILE I.D.: \kawaii\eng\std dwgs\SB-70.dgn				DRAWN BY: GS										