

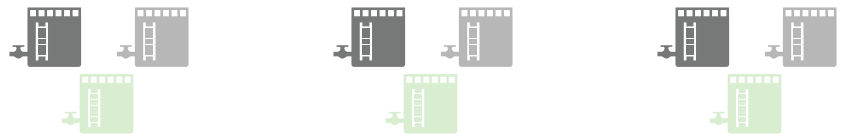
# A DUAL-APPROACH TO ADDRESS SAFE DRINKING WATER NEEDS OF CALIFORNIANS

## GOVERNANCE – SB 414 (CABALLERO)

A dual-approach that addresses each unsustainable community water system’s underlying issues is imperative, and must include transparent and sustainable governance reform.

The goal must be to create highly functioning water systems with self-sustaining financial capacity.

Provides a pathway to compliance and one-time investment that will not impose a statewide water tax on ratepayers.



### Pathways to Compliance

Small System Water Authority Formation

SB 88 (BTB, 2015)  
SB 552 (Wolk, 2016)

Bring System into Compliance



Provides governance reform, local control and enhanced financial capacity



Consolidation or extension of services utilizing existing tools and resources



Ensures water quality and infrastructure investment

### PERMANENT AND SUSTAINABLE

Creates an efficient pathway to compliance and addresses governance issues, and only one path requires a one-time investment applied over four years.

### LOCAL CONTROL

Through a public process, establishes special districts called Small System Water Authorities, with locally-elected boards.

### TRANSPARENCY

Creates independent special districts with open and public meetings, independent audits, and finances posted on a public website.

### FINANCIAL CAPACITY

Generates economies of scale and reduces overhead. Systems with less than 400 service connections can have overhead costs as high as 60 cents for every ratepayer dollar, leaving little to cover water safety needs.



No Water Tax



Creates Economies of Scale



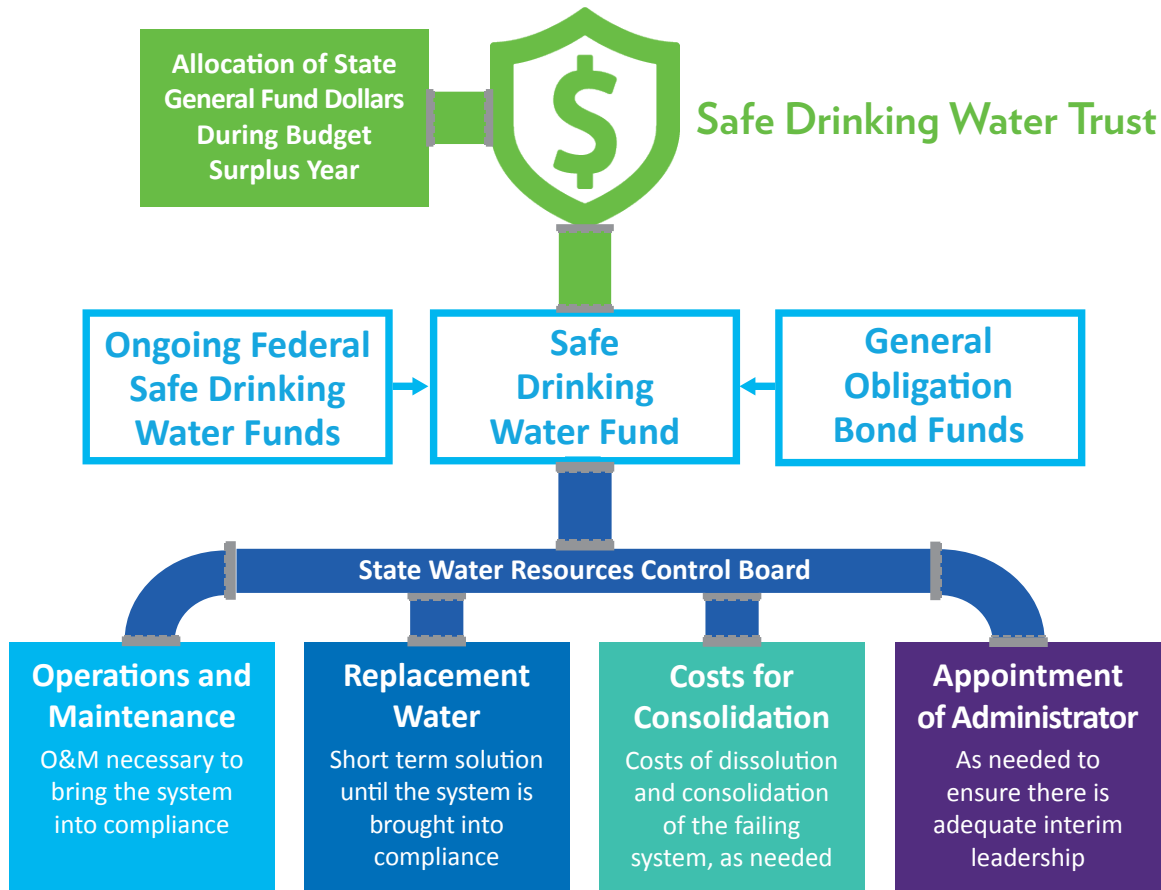
Establishes Self-Sustaining Systems

SEE REVERSE FOR | FUNDING | INFORMATION

Learn more about the Safe Drinking Water Package at [emwd.org/SDWP](http://emwd.org/SDWP)



# A DUAL-APPROACH TO ADDRESS SAFE DRINKING WATER NEEDS OF CALIFORNIANS TRUST – SB 669 (CABALLERO)



A funding solution that does not impose a statewide water tax, and when coupled with governance reforms, establishes a sound process for repairing failing community water systems.

SEE REVERSE FOR | GOVERNANCE | INFORMATION

Learn more about the Safe Drinking Water Package at [emwd.org/SDWP](http://emwd.org/SDWP)



Solving this crisis requires a dual approach that addresses governance and funding.