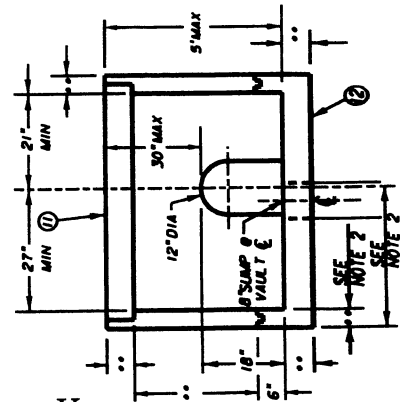
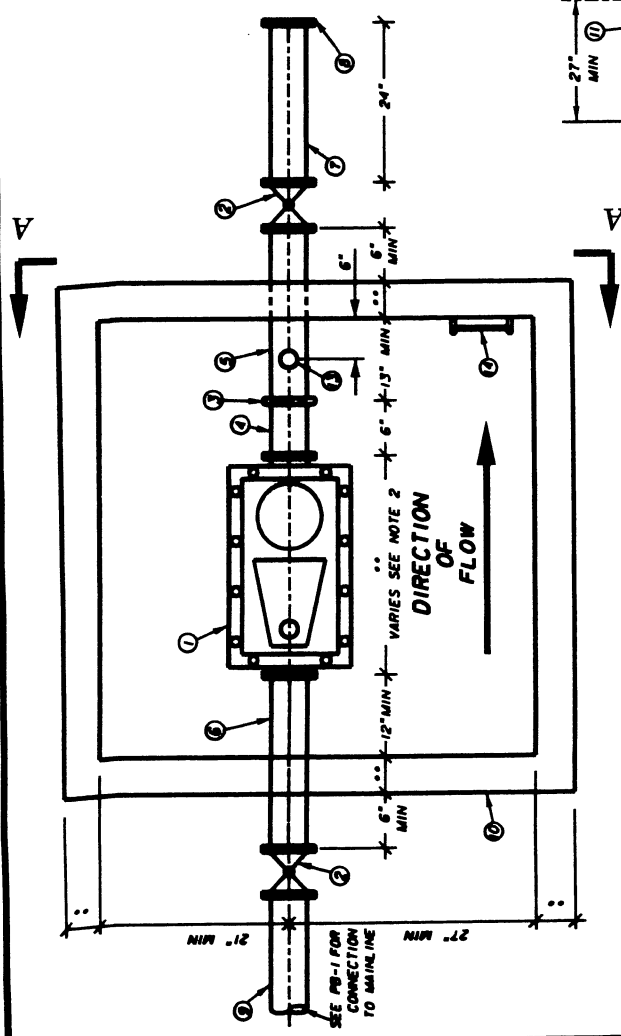


**MATERIALS LIST**

- | ITEM QTY | DESCRIPTION  |
|----------|--|
| 1        | 8" AMR METER W/ INTELLIGENT COMMUNICATION ENCODERS |
| 2        | 8" RESILIENT SEAT GATE VALVE F&F                   |
| 3        | 8" VICTALIC COUPLING                               |
| 4        | 8" X 8" FLDG VICTALIC NIPPLE                       |
| 5        | 8" FLDG NIPPLE (LENGTH VARIES)                     |
| 6        | 8" FLDG SPOOL (LENGTH VARIES)                      |
| 7        | 8" X 24" FLANGED SPOOL                             |
| 8        | BLIND FLANGE (IF REQUIRED)                         |
| 9        | 8" PIPE  |
| 10       | UTILITY BOX/VAULT**                                |
| 11       | TORSION SPRING ASSIST. 2-PC LID 1                  |
| 12       | PARKWAY OR TRAFFIC COVER (ALUMINUM)                |
| 13       | ROADWAY APPLIC. TO MEET AASHTO H-20 DIRECT         |
| 14       | TRAFFIC RATING (STEEL)                             |
| 15       | PRECAST CONCRETE BASE W/8" SLUMP ****              |
| 16       | 2" (1PI) COUPLING & PLUG.                          |
| 17       | SEE NOTE 11.                                       |

- NOTES:**
- METER SUPPORT AS REQUIRED.
  - METER DIMENSIONS MAY VARY. CONTRACTOR SHALL VERIFY METER DIMS & SUPPLY UTILITY BOX WITH SPECIFIED CLEARANCE, WALL THICKNESS PER MANUFACTURER SPECIFICATION. ALTERNATE METER BOX MAY BE USED AS PER APPROVED MATERIAL LIST TO ACCOMMODATE NARROW R/W.
  - METER REGISTERS TO BE IN ACRE FEET.
  - BASE IS INCLUDED W/VAULT.
  - READ HOLES ARE TO BE POSITIONED OVER METER REGISTERS AFTER METER IS INSTALLED.
  - VAULT LIDS TO BE PRIME & PAINTED ENMO APPROVED PURPLE.
  - ALL MATERIALS PER ENMO APPROVED MATERIAL LIST.
  - METER TYPE SHALL BE APPROVED BY NEW BUSINESS OR METER SERVICES.
  - DEPTH OF METER SHALL BE 30" MAX. FROM VAULT LID TO TOP OF METER.
  - IF VAULT IS PLACED IN DIRT/LANDSCAPE, PLACE TOP 4" ABOVE GRADE AND GRADE AWAY FROM VAULT TO PREVENT WATER FROM ENTERING.
  - VAULT DEPTHS GREATER THAN 5 FT. INSTALL LADDER PER B-519 OR B-520.
  - BOTTOM OF PIPE SHALL BE MIN. 12" FROM VAULT FLOOR.



VIEW A-A



EASTERN MUNICIPAL WATER DISTRICT  
STANDARD DRAWING

**8" RECYCLED METER INSTALLATION**

APPROVED: *[Signature]* 5/14/05  
ASST. GENERAL MANAGER, ENGINEERING DEPT

REFERENCES:  
FILE ID: PB-16

NO.	DATE	INITIAL	REVISIONS DESCRIPTION	APPRD	DATE	APPROVALS INITIAL	DATE
						DESIGN	5/12/05
						CONSTRUCTION	
						INSPECTION	5/14/05
						OPERATIONS	5/13/05
						SUBMITTED	5/16/05

SCALE: NONE  
DRAWN BY: CM

REFERENCES:  
FILE ID: PB-16