

Eastern Municipal Water District

2270 Trumble Road
P.O. Box 8300
Perris, CA 92572-8300



Notice of Preparation

Date: December 12, 2023
To: State Clearinghouse; Responsible and Trustee Agencies; and Other Interested Parties
Subject: Re-Issued Notice of Preparation of an Environmental Impact Report
Project: Lake Skinner Regional Water Transmission System (formerly *EM-11 Transmission Pipeline and Pump Station Project*)
Lead Agency: Eastern Municipal Water District
SCH: 2022070445

Eastern Municipal Water District (District) intends to prepare an Environmental Impact Report (EIR) for the proposed Lake Skinner Regional Water Transmission System Project (Project), which was formerly called the *EM-11 Transmission Pipeline and Pump Station Project*. A Notice of Preparation (NOP) was previously circulated for the EM-11 Transmission Pipeline and Pump Station Project in July 2022. The current Project includes similar components and objectives as the previous version; however, the locations of the Project components have changed and therefore, this NOP is being recirculated.

The District serves as Lead Agency pursuant to the California Environmental Quality Act (CEQA). The District invites written comments on the scope of the environmental analysis and identification of potential environmental issues to be included in the EIR.

Notice of Preparation: This Notice of Preparation (NOP) has been sent to the Office of Planning and Research, Responsible and Trustee agencies, organizations, and interested parties. The purpose of the NOP is to inform recipients that the District is beginning preparation of an EIR and to solicit information that will be helpful in the environmental review process. This notice includes information on how to provide comments to the District and a description of the Project.

Comments: The District is requesting input from CEQA Responsible and Trustee agencies, other public agencies with jurisdiction by law over resources potentially affected by the proposed Project, and public input regarding the scope and content of environmental information to be included in the EIR. Agency responses should identify the issues to be considered in the EIR, including significant environmental issues, alternatives, mitigation measures, and whether the responding agency will be a responsible or trustee agency, and the basis for that determination. Due to the limits mandated by State law, your response must be sent at the earliest possible date but postmarked no later than January 25, 2024. Please send your comments to:

Eastern Municipal Water District
Attn: Joseph Broadhead
2270 Trumble Road
Perris, CA 92570

Location of the Proposed Project: The proposed Project would be located within unincorporated areas of Riverside County, east of the cities of Menifee and Murrieta (Figure 1, *Regional Location*, and Figure 2, *Project Alignment*). The transmission pipelines would extend in an overall northern direction from The Metropolitan District of California (Metropolitan) Robert A. Skinner Water Treatment Plant (Skinner WTP) approximately 14 miles through the southern Perris Valley area to the community of Winchester. The new booster pump station (BPS) and turnout would be sited near the intersection of Auld Road and Leon Road, near the District’s existing EM-17 BPS and turnout and approximately two miles west of the Skinner WTP.

Overview of the Proposed Project: The District is proposing the Project to assist in expansion of its treated water supply portfolio to meet demands resulting from long-term projected growth. The Project includes construction and operation of three main components: (1) a new Metropolitan-owned water service connection (also referred to as a turnout) to transfer treated water deliveries from Metropolitan’s Skinner WTP to the District; (2) a new BPS that would connect to the turnout to pump water to the District’s service area; and (3) new transmission pipelines to deliver water from Skinner WTP to the District’s service area. Collectively, these components comprise the Project and would be sized to meet the buildout demand condition of 140 cubic feet per second (cfs) of additional treated water supplies.

The Project components would be implemented in four phases. The first phase, which would be online by 2030, includes construction of the turnout, construction of the BPS with a capacity of 40 cubic feet per second (cfs), and relining existing 49-inch and 43-inch pipeline from the BPS to Fowler Drive (approximately 3.6 miles in length). The second phase, which would be online by 2035, includes relining the existing 49-inch pipeline from Fowler Drive to Holland Road (approximately 3.2 miles in length). The third phase, which would be online by 2040, includes installation of a new 60-inch pipeline from Holland Road to Simpson Road (approximately 2.6 miles in length). The fourth phase, which would be online by 2045, includes the installation of a new 72-inch pipeline from the Skinner WTP to the turnout (approximately 2.0 miles in length), installation of new 60-inch parallel pipeline from the BPS to Fowler Drive (approximately 3.6 miles in length), and installation of new 48-inch parallel pipe from Fowler Drive to Holland Road (approximately 2.2 miles in length). Additional future improvements include increasing the flow of the pump station to 80 cfs in 2045 and 140 cfs at full buildout.

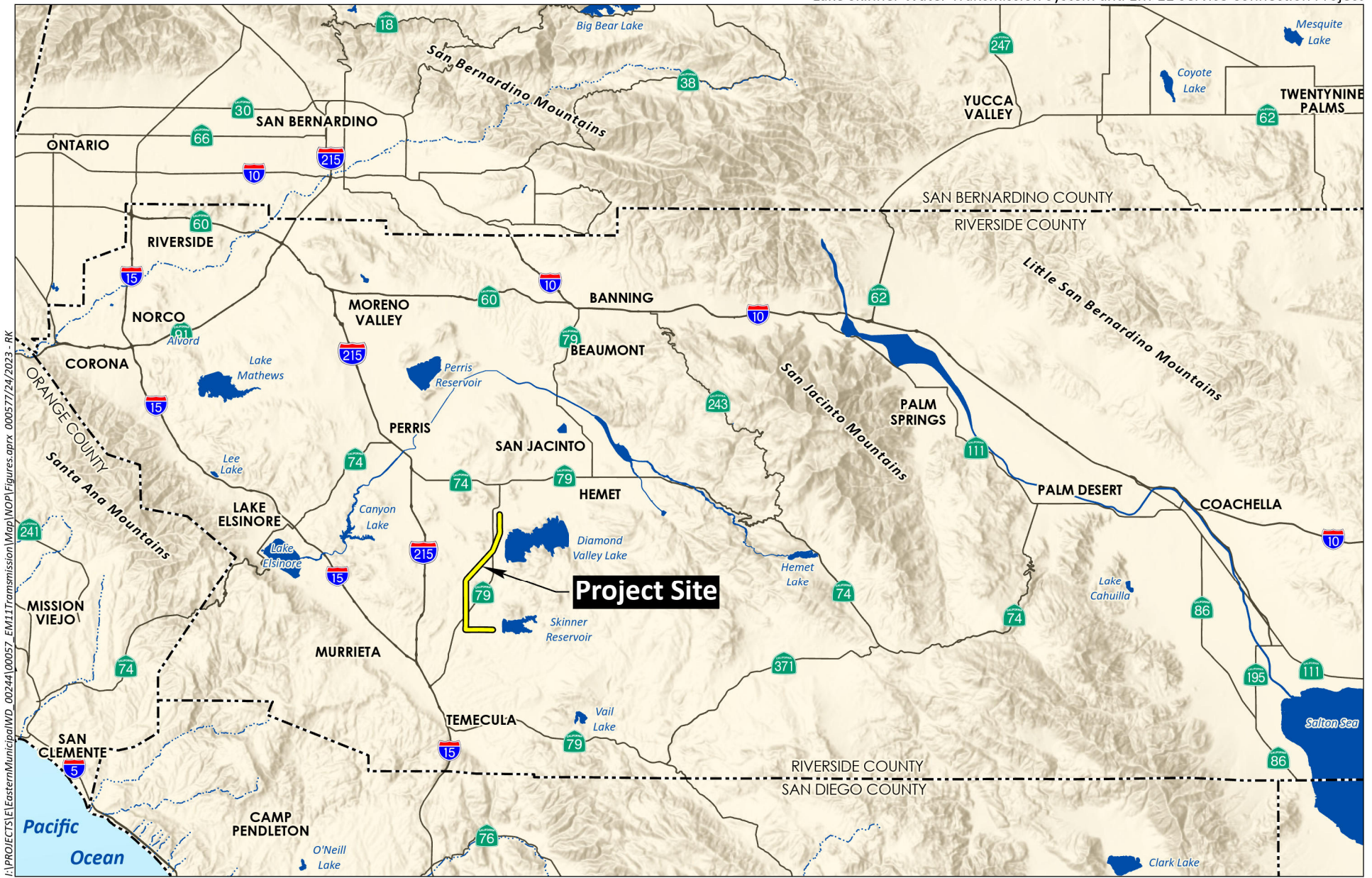
Potential Environmental Effects of the Proposed Project: In accordance with Section 15126 of the CEQA Guidelines, the EIR will assess the physical changes to the environment that would likely result from the construction and operation of the Project, including direct, indirect, and cumulative impacts and growth-inducing impacts. The EIR will provide an assessment of impacts for facilities and activities associated with Project implementation (CEQA Guidelines Section 15161). The analysis in the EIR will be programmatic in nature due to the phasing of the Project and the current availability of Project-specific details.

The District has determined that the proposed Project may have the potential to significantly impact air quality, biological resources, cultural resources and tribal cultural resources, energy, geology and soils, greenhouse gas emissions, hydrology and water quality, and noise. These issue areas will be evaluated in detail in the Draft EIR. It is anticipated that all other issue areas will be discussed in the *Environmental Effects Found Not to be Significant* section of the Draft EIR. The EIR will identify mitigation measures if necessary and feasible to reduce potentially significant impacts of the proposed Project. The EIR will also discuss alternatives to the proposed Project, including the CEQA-required “No Project” alternative.

Attachments:

Figure 1: Regional Location

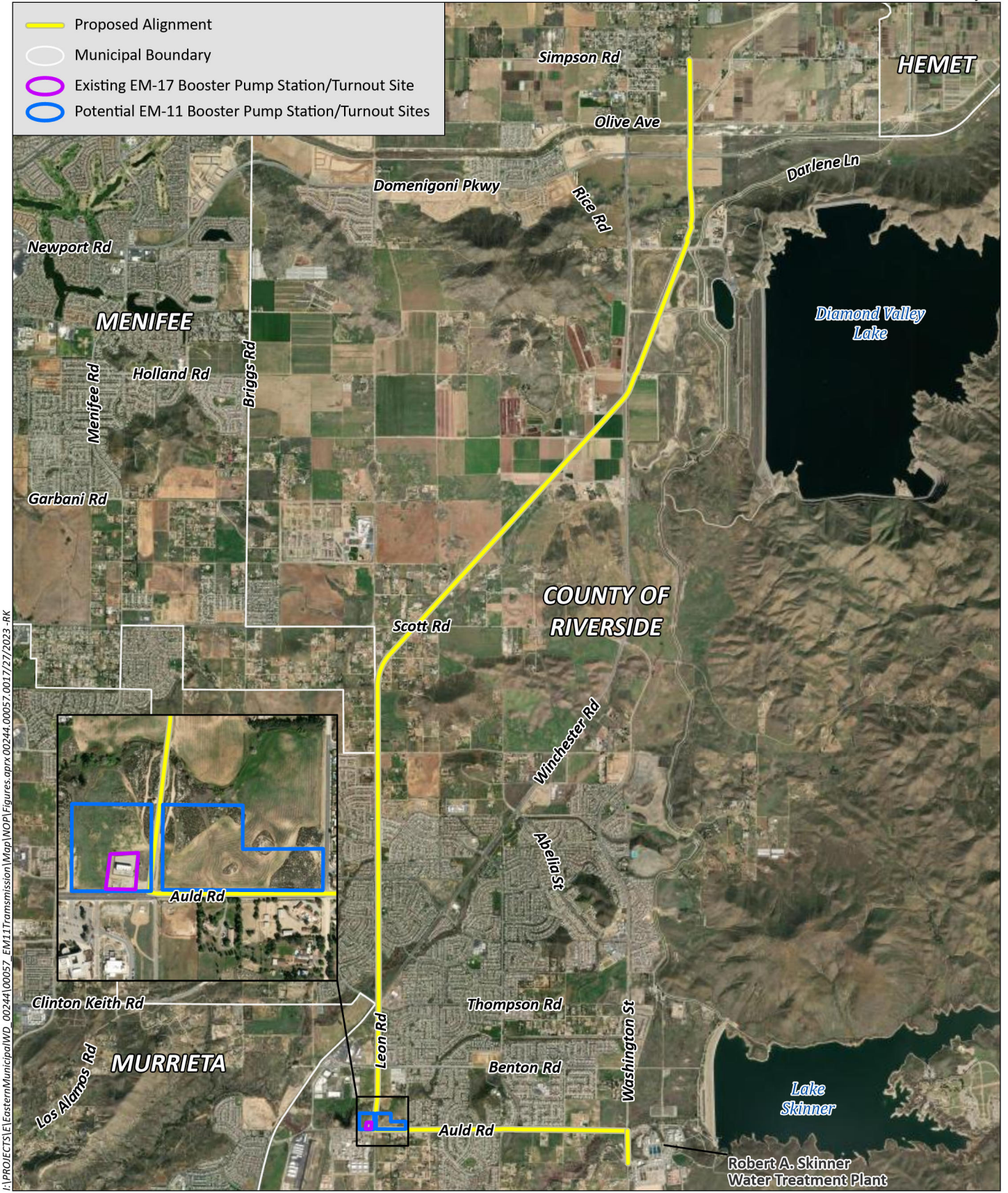
Figure 2: Project Alignment



F:\PROJECTS\EasternMunicipal\WD_00244\00057_EM11Transmission\Map\WOP\Figures.aprx 000577/24/2023 - RK



Source: Base Map Layers (ESRI, 2013)



F:\PROJECTS\EasternMunicipal\WD_00244\00057_EM11Transmission\Map\NOP\Figures.aprx 00244.00057.0017\27/2023 -RK



Source: Aerial (Esri, 2022)