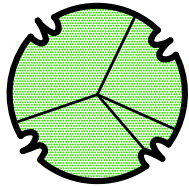
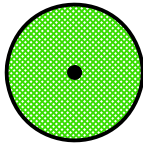


Low Water Use Plant Material - 68%



Prosopis hybrid 'Phoenix'
Phoenix Mesquite



Acacia aneura
Mulga



Baccharis 'Pigeon Point'
Dwarf Coyote Bush



Ruellia peninsularis
Desert Ruellia

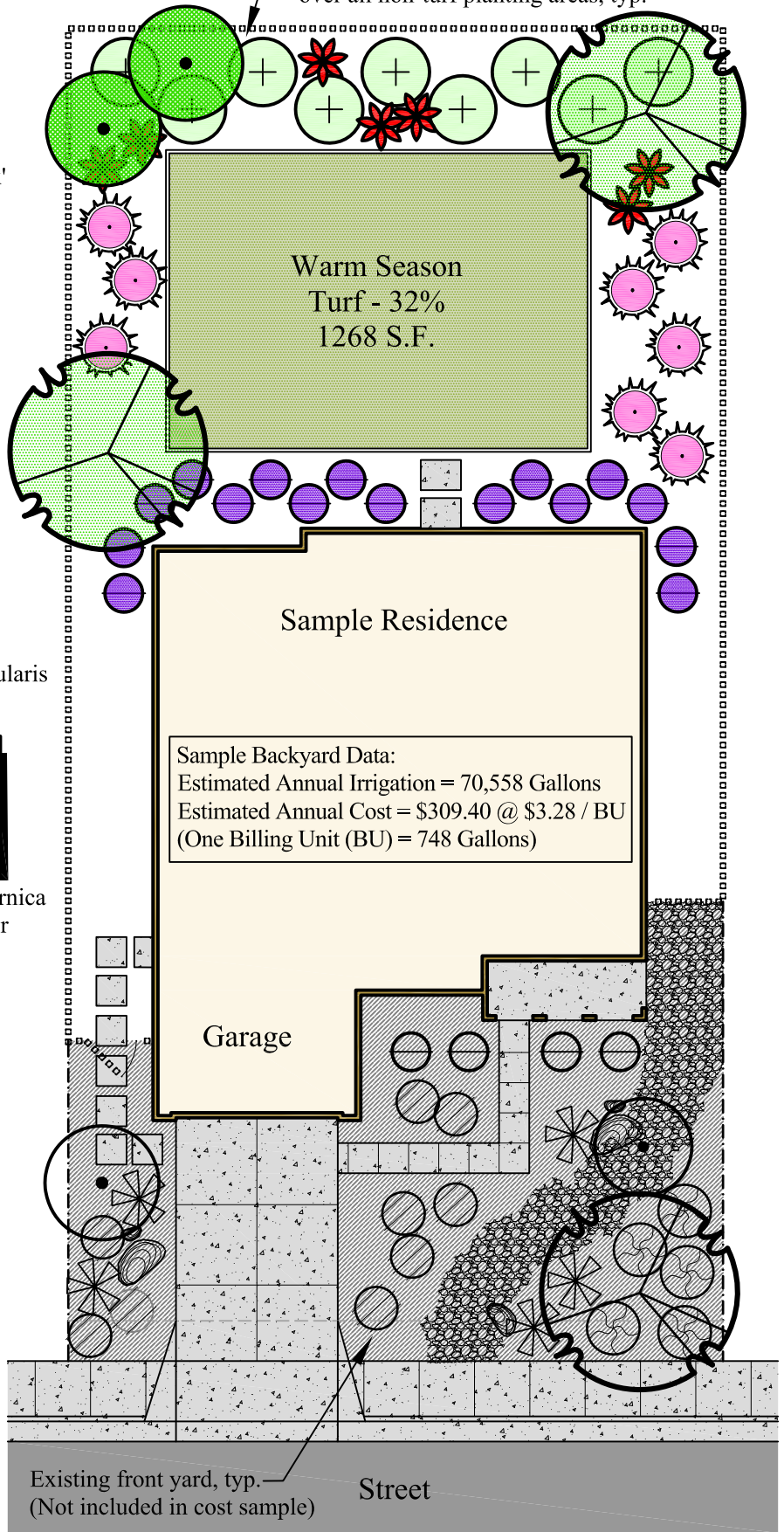


Hesperaloe parviflora
Red Yucca



Calliandra californica
Baja Fairy Duster

3" - 4" Layer of organic bark mulch
over all non-turf planting areas, typ.



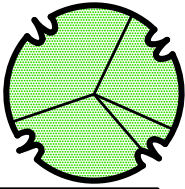
Existing front yard, typ.
(Not included in cost sample) Street

This sample landscape concept plan is intended for general guidance only. Water costs are estimates only, and are based on EMWD potable water rates in Tier 2 (Outdoor) as of July 2015. It is intended that homeowners adapt the concept as needed for the specific conditions of their property, including choice of materials and plants to the appropriate location. EMWD assumes no responsibility for final design or installation.

LANDSCAPE CONCEPT PLAN 1



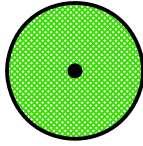
Low Water Use Plant Material - 53%



Rhus lancea
African Sumac



Laurus nobilis
Sweet Bay



Cistus purpureus
Orchid Rockrose



Decorative Boulder



Lantana 'New Gold'
New Gold Lantana



Yucca glauca
Yucca



Rosmarinus 'Prostratus'
Prostrate Rosemary



Hesperaloe funifera
Giant Hesperaloe

Medium Water Use Plant Material - 32%



Rhaphiolepis 'Springtime'
Indian Hawthorn



Rusellia equisetiformis
Coral Fountain

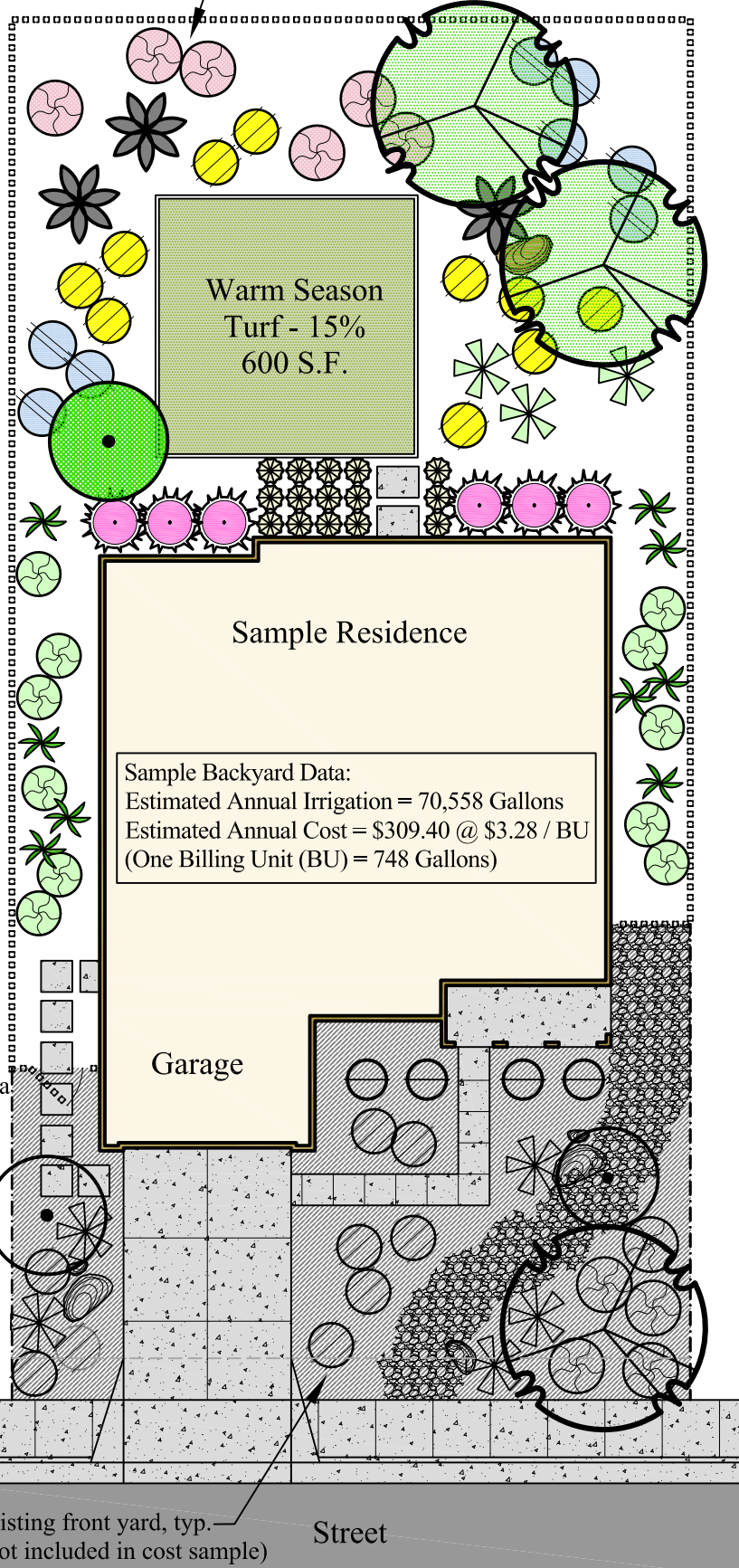


Carex tumulicola
Berkeley Sedge



Diets bicolor
African Iris

3" - 4" Layer of organic bark mulch
over all non-turf planting areas, typ.

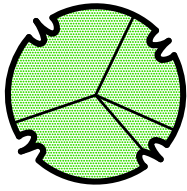


LANDSCAPE CONCEPT PLAN 2

This sample landscape concept plan is intended for general guidance only. Water costs are estimates only, and are based on EMWD potable water rates in Tier 2 (Outdoor) as of July 2015. It is intended that homeowners adapt the concept as needed for the specific conditions of their property, including choice of materials and plants to the appropriate location. EMWD assumes no responsibility for final design or installation.



Low Water Use Plant Material - 44%



Brachychiton populneus
Bottle Tree



Tecoma stans
Yellow Bells

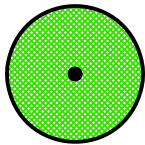
Decorative Boulder



Dalea greggii
Trailing Indigo Bush

Dasylirion longissimum
Tootless Desert Spoon

Medium Water Use Plant Material - 51%



Vitex agnus-castus
Monk's Pepper Tree



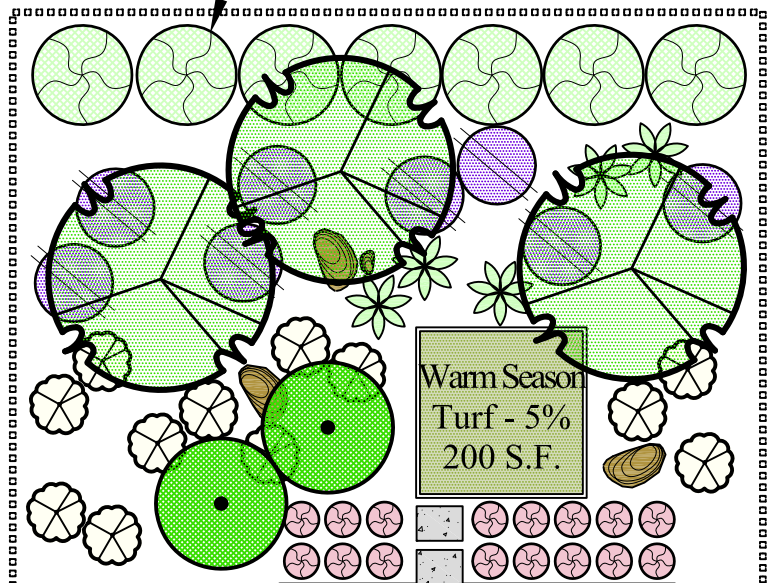
Muhlenbergia rigens
Deer Grass

Carissa macrocarpa
'Boxwood Beauty'
Natal Plum



Callistemon 'Little John'
Dwarf Bottlebrush

3" - 4" Layer of organic bark mulch over all non-turf planting areas, typ.



Sample Residence

Sample Backyard Data:
Estimated Annual Irrigation = 70,558 Gallons
Estimated Annual Cost = \$309.40 @ \$3.28 / BU
(One Billing Unit (BU) = 748 Gallons)

Garage

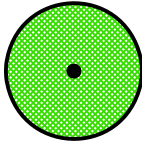
Existing front yard, typ. (Not included in cost sample) Street

This sample landscape concept plan is intended for general guidance only. Water costs are estimates only, and are based on EMWD potable water rates in Tier 2 (Outdoor) as of July 2015. It is intended that homeowners adapt the concept as needed for the specific conditions of their property, including choice of materials and plants to the appropriate location. EMWD assumes no responsibility for final design or installation.



LANDSCAPE CONCEPT PLAN 3

Low Water Use Plant Material - 39%



Chilopsis linearis
Desert Willow



+ Grevellia 'Noellii'
Noel's Grevellia

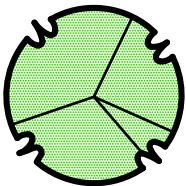
● Salvia leucantha
Mexican Bush Sage



★ Nolina species
Grass Tree

● Decorative Boulder

Medium Water Use Plant Material - 61%



Albizia julibrissin
Silk Tree



● Dodonaea viscosa
'Purpurea'
Purple Hop Bush

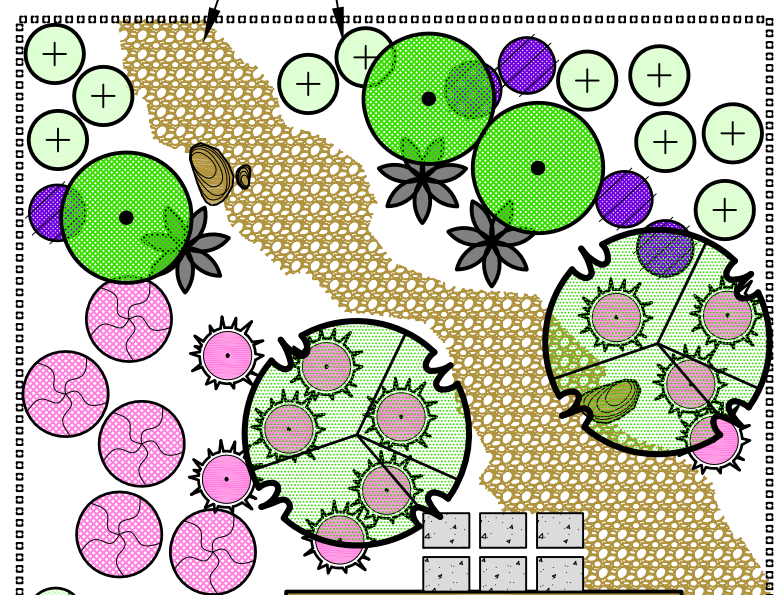
● Pyracantha 'Low Boy'
Dwarf Firethorn



● Coprosma 'kirkii'
Mirror Plant

Decorative cobble
topdressing, typ.

3" - 4" Layer of organic bark mulch
over all non-turf planting areas, typ.



Sample Residence

Sample Backyard Data:
Estimated Annual Irrigation = 70,558 Gallons
Estimated Annual Cost = \$309.40 @ \$3.28 / BU
(One Billing Unit (BU) = 748 Gallons)

Garage

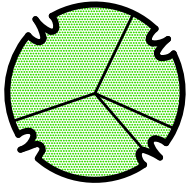
Existing front yard, typ.
(Not included in cost sample) Street

This sample landscape concept plan is intended for general guidance only. Water costs are estimates only, and are based on EMWD potable water rates in Tier 2 (Outdoor) as of July 2015. It is intended that homeowners adapt the concept as needed for the specific conditions of their property, including choice of materials and plants to the appropriate location. EMWD assumes no responsibility for final design or installation.

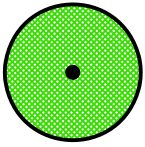
LANDSCAPE CONCEPT PLAN 4



Low Water Use Plant Material - 75%



Acacia farnesiana
Sweet Acacia



Sophora secundiflora
Texas Mountain Laurel



Simmondsia chinensis
Jojoba

Decorative Boulder



Westringia 'Mundi'
Low Coast Rosemary

Aloe species
Aloe



Acacia redolens 'Desert Carpet'
Desert Carpet Acacia

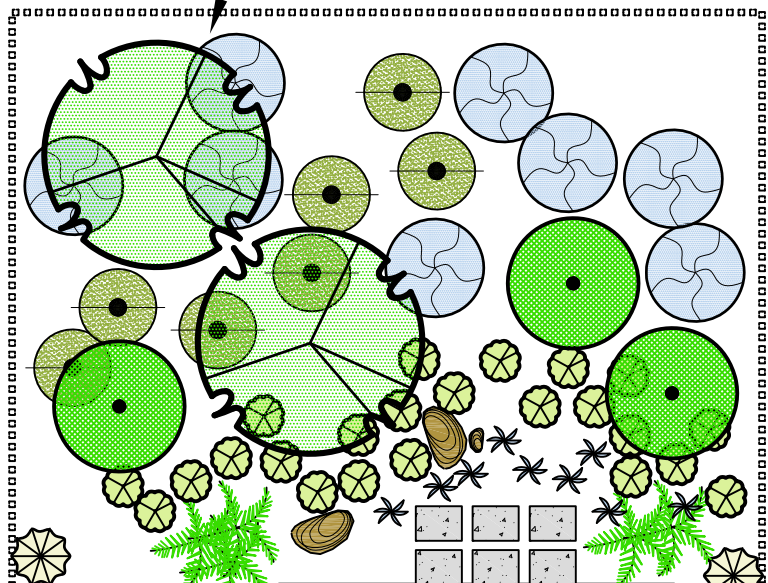
Medium Water Use Plant Material - 25%



Myrtus communis
Dwarf Myrtle

Chamaerops humilis
Mediterranean
Fan Palm

3" - 4" Layer of organic bark mulch
over all non-turf planting areas, typ.



Sample Residence

Sample Backyard Data:
Estimated Annual Irrigation = 50,826 Gallons
Estimated Annual Cost = \$222.88 @ \$3.28 / BU
(One Billing Unit (BU) = 748 Gallons)

Garage

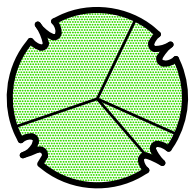
Existing front yard, typ.
(Not included in cost sample) Street

This sample landscape concept plan is intended for general guidance only. Water costs are estimates only, and are based on EMWD potable water rates in Tier 2 (Outdoor) as of July 2015. It is intended that homeowners adapt the concept as needed for the specific conditions of their property, including choice of materials and plants to the appropriate location. EMWD assumes no responsibility for final design or installation.

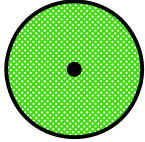
LANDSCAPE CONCEPT PLAN 5



Low Water Use Plant Material - 100%



Parkinsonia 'Desert Museum'
Desert Museum Palo Verde



Olea europaea 'Swan Hill'
Swan Hill Olive



Leucophyllum species
Texas Sage



Decorative Boulder



Nerium oleander
'Petite Pink'
Petite Pink Oleander



Cistus salviifolius
Sage Leaf Rockrose



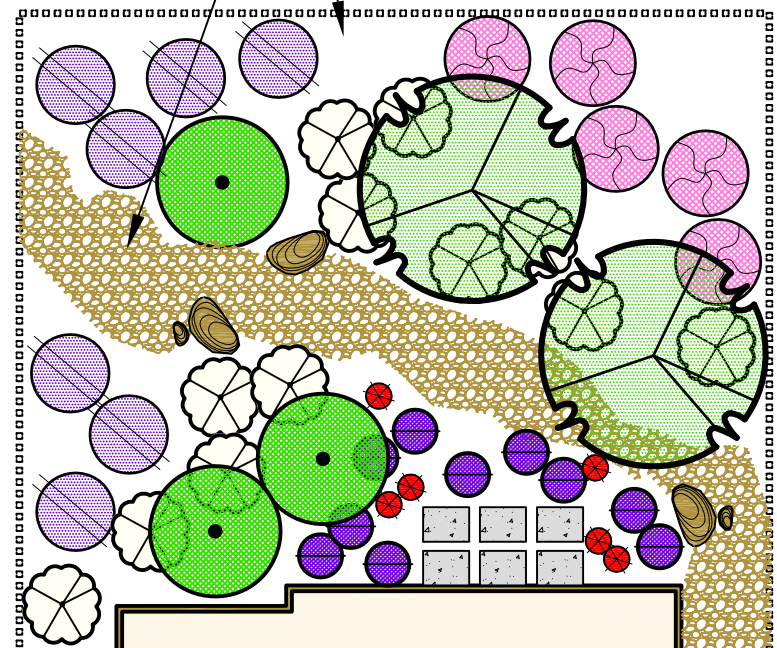
Convolvulus mauritanicus
Ground Morning Glory



Kniphofia uvaria
Red Hot Poker

Decorative cobble
topdressing, typ.

3" - 4" Layer of organic bark mulch
over all non-turf planting areas, typ.



Sample Residence

Sample Backyard Data:

Estimated Annual Irrigation = 36,891 Gallons

Estimated Annual Cost = \$161.77 @ \$3.28 / BU

(One Billing Unit (BU) = 748 Gallons)

Garage

Existing front yard, typ.
(Not included in cost sample)

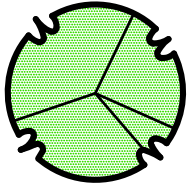
Street

This sample landscape concept plan is intended for general guidance only. Water costs are estimates only, and are based on EMWD potable water rates in Tier 2 (Outdoor) as of July 2015. It is intended that homeowners adapt the concept as needed for the specific conditions of their property, including choice of materials and plants to the appropriate location. EMWD assumes no responsibility for final design or installation.

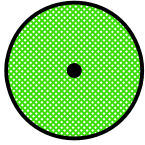
LANDSCAPE CONCEPT PLAN 6



Low Water Use Plant Material - 69%



Pinus brutia eldarica
Afgan Pine



Acacia cultriformis
Knifefleaf Acacia



Eleagnus pungens
Silverberry



Decorative Boulder



Bougainvillea hyb.
'Torch Glow'
Torch Glow Bougainvillea



Salvia leucophylla
Purple Sage



Bulbine frutescens
Stalked Bulbine



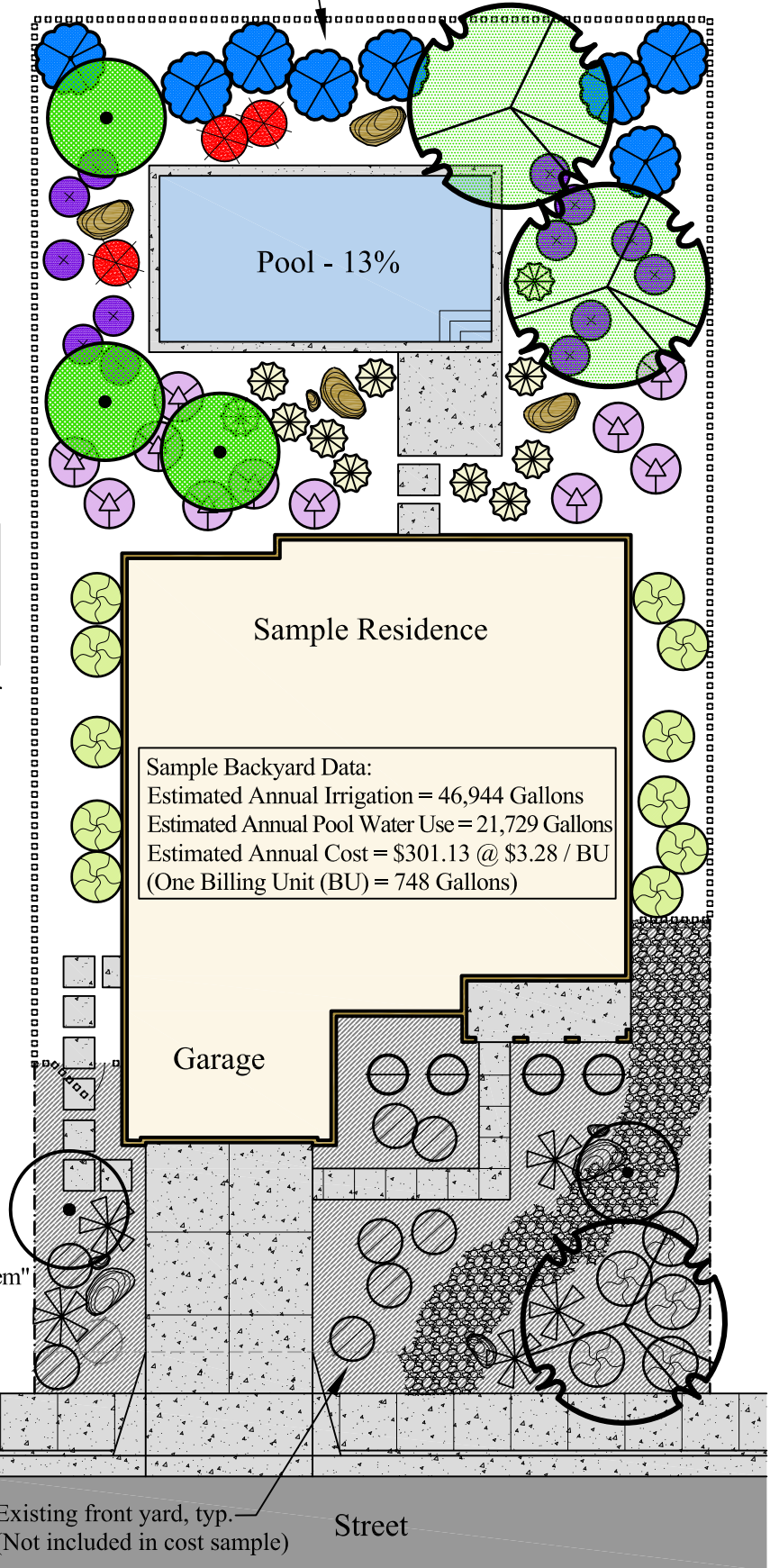
Grevellia "Coastal Gem"
Dwarf Grevellia

Medium Water Use Plant Material - 18%



Pittosporum tobira 'Variegata'
Variegated Mock Orange

3" - 4" Layer of organic bark mulch over all non-turf planting areas, typ.

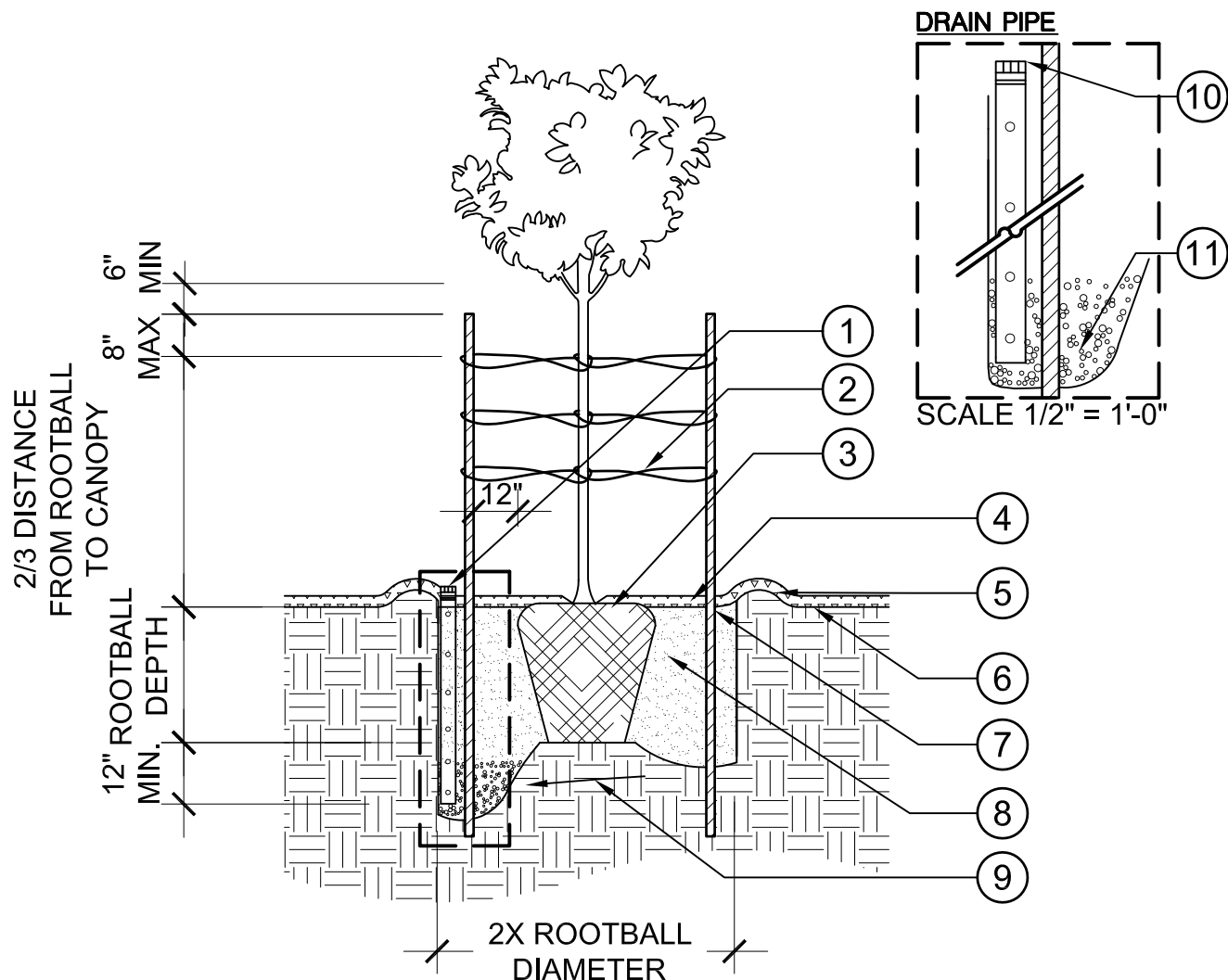


Existing front yard, typ.
(Not included in cost sample) Street

This sample landscape concept plan is intended for general guidance only. Water costs are estimates only, and are based on EMWD potable water rates in Tier 2 (Outdoor) as of July 2015. It is intended that homeowners adapt the concept as needed for the specific conditions of their property, including choice of materials and plants to the appropriate location. EMWD assumes no responsibility for final design or installation.



LANDSCAPE CONCEPT PLAN 7

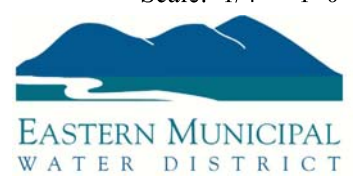


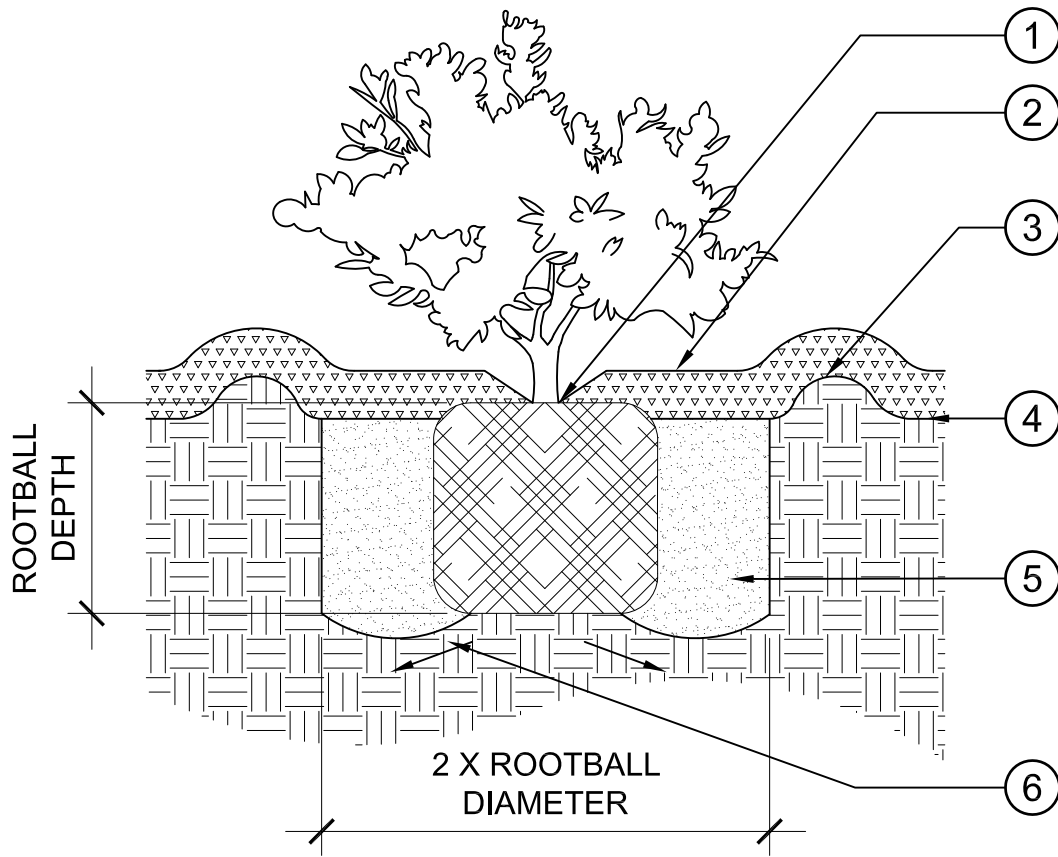
- ① 4" PVC SCH 40 PERF. PIPE WRAPPED IN FILTER SOCK. (1 PER TREE)
- ② (6) TREE TIES
- ③ SET TOP OF ROOTBALL 1" ABOVE FINISH GRADE
- ④ 3" LAYER MULCH MATERIAL, PROVIDE 3" CLEARANCE FROM TRUNK
- ⑤ 6" HIGH WATERING BERM
- ⑥ FINISH GRADE
- ⑦ (2) 2" DIAMETER STAKES, USE 3" DIA. STAKES IN HIGH WIND EXPOSURE AREAS
- ⑧ PLANTING BACKFILL
- ⑨ SLOPE PLANTING HOLE TO CORNER(S) WITH DRAIN PIPE
- ⑩ BLACK ROUND DRAIN GRATE CAP, MAX. 1" ABOVE MULCH FINISH SURFACE
- ⑪ 1 CU FT. OF 3/4" DIAMETER CRUSHED ROCK FOR 15 GAL. AND 24" BOX (2 CU FT. FOR 36" BOX)

NOTE:
STAKE TREE PERPENDICULAR TO DIRECTION OF PREVAILING WIND.

Scale: 1/4" = 1'-0"

PLANTING DETAIL 1 TREE INSTALLATION





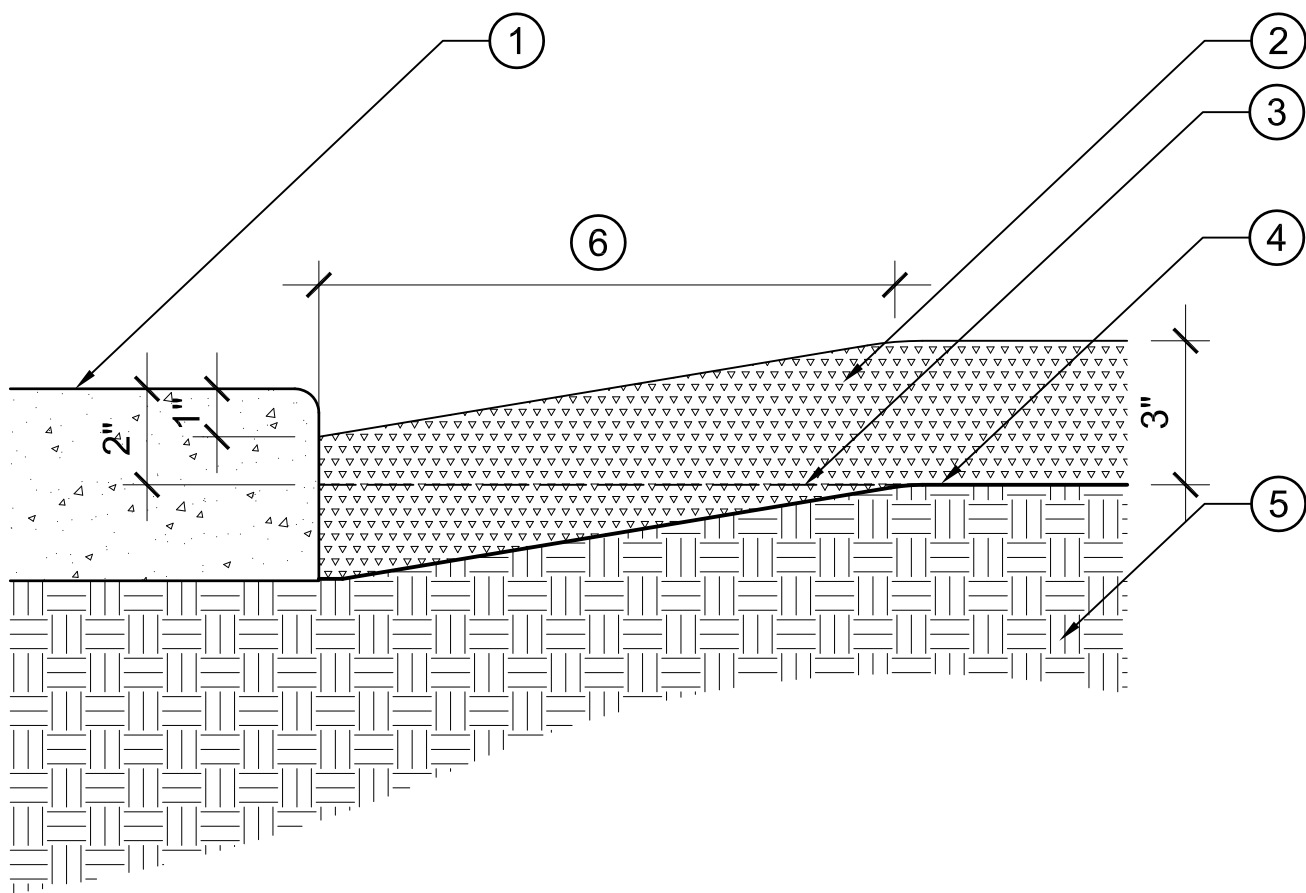
- | | |
|--|-------------------------------------|
| ① SET TOP OF ROOTBALL
1" ABOVE FINISH GRADE | ④ FINISH GRADE |
| ② 3" LAYER MULCH MATERIAL | ⑤ PLANTING BACKFILL |
| ③ 3" HIGH WATERING BERM | ⑥ SLOPE PLANTING HOLE
TO CORNERS |

PLANTING DETAIL 2

SHRUB INSTALLATION

Scale: 1" = 1'-0"





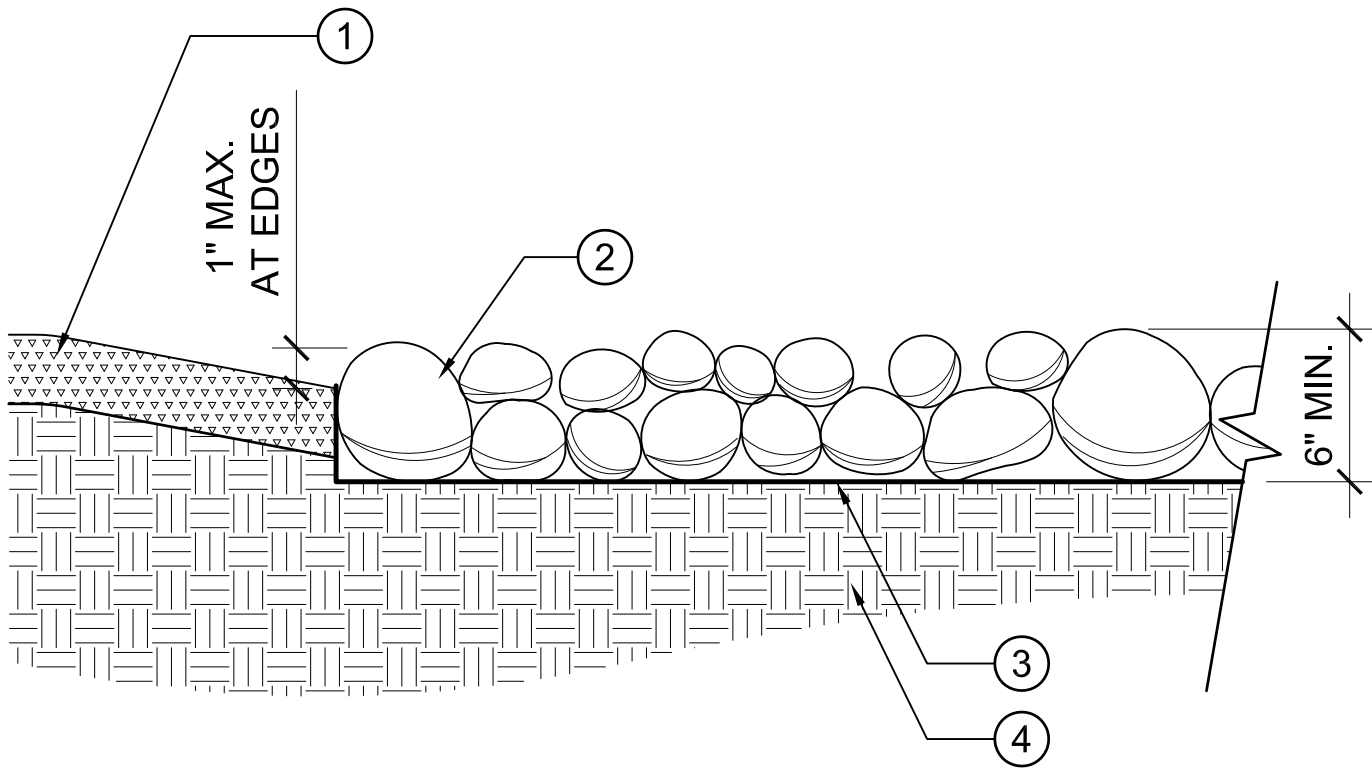
- ① HARDSCAPE
- ② MULCH
- ③ ROUGH GRADE
- ④ FINISH GRADE
- ⑤ BASE AND COMPACTION
PER GEOTECHNICAL REPORT
- ⑥ TRANSITION AREA WIDTH VARIES
5:1 MAX. GRADE AT TRANSITION

Scale: 3" = 1'-0"

PLANTING DETAIL 3

MULCH INSTALLATION





- ① PLANTING AREA WITH MULCH
TRANSITION GRADING
- ② 3" TO 6" DIA. ROUNDED COBBLE

- ③ WEED BARRIER FABRIC
WRAP UP 4" AT EDGES
- ④ BASE AND COMPACTION PER
GEOTECHNICAL REPORT

NOTE:
 PROVIDE PRE-EMERGENT
 HERBICIDE TO SUBGRADE PRIOR
 TO INSTALLATION OF WEED
 BARRIER FABRIC

PLANTING DETAIL 4 COBBLE INSTALLATION

Scale: 1 1/2" = 1'-0"

