



CONSOLIDATED SCHEDULE OF
**RATES, FEES,
AND CHARGES**

CONSOLIDATED SCHEDULE OF RATES, FEES, AND CHARGES

Effective January 1, 2024

Unless otherwise indicated



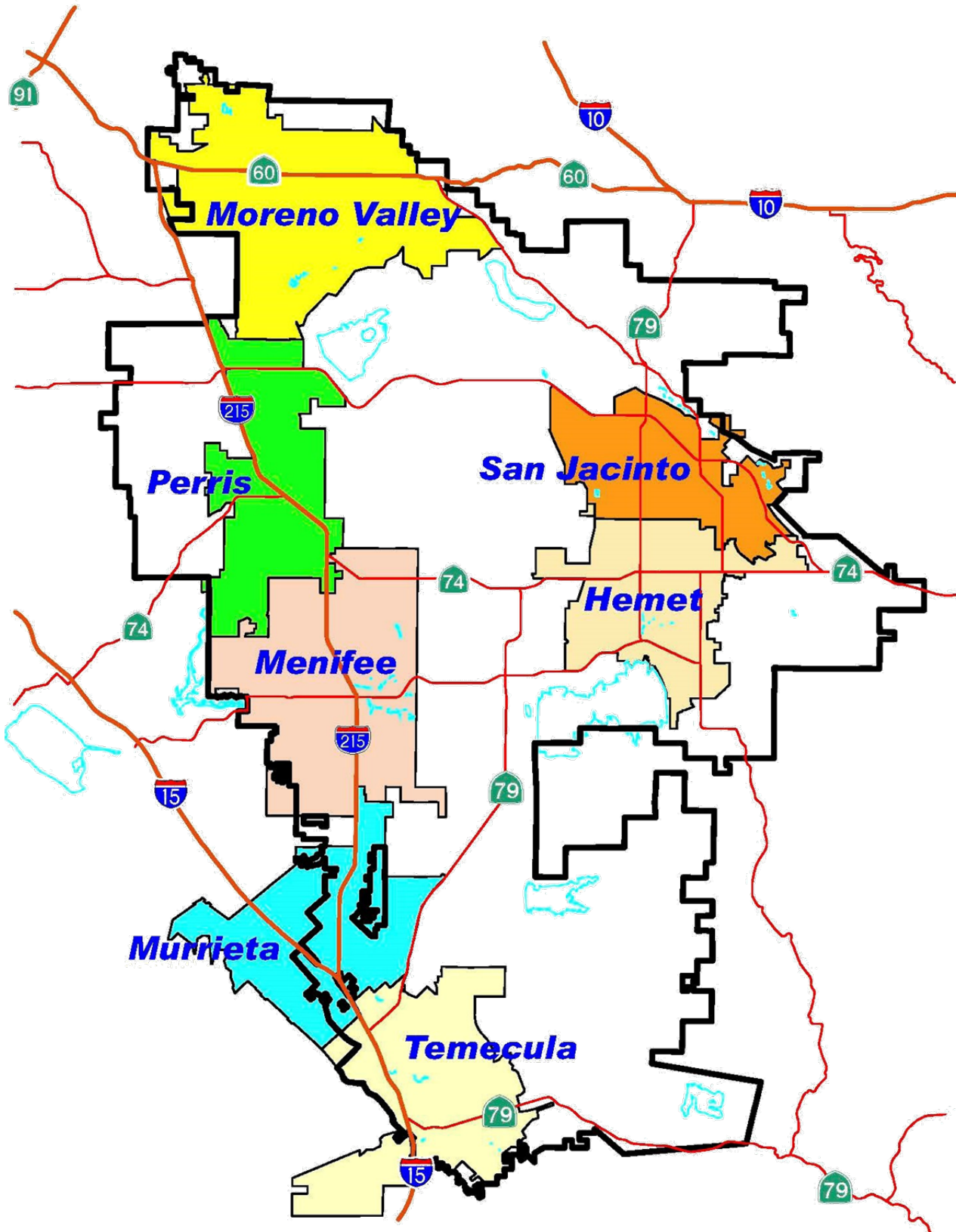
Prepared by the

Eastern Municipal Water District
Finance Department

2270 Trumble Road
Perris, CA 92570

EASTERN MUNICIPAL WATER DISTRICT

SERVICE AREA MAP AND INCORPORATED CITIES



EASTERN MUNICIPAL WATER DISTRICT

Adopted Consolidated Schedule of Rates, Fees, and Charges Effective January 1, 2024

BOARD OF DIRECTORS

Position	Name	Current Term of Office
President	Philip E. Paule	2022-2026
Vice President	Stephen J. Corona	2022-2026
Director	Jeff Armstrong	2020-2024
Director	Randy A. Record	2020-2024
Director	David J. Slawson	2022-2026

EXECUTIVE MANAGEMENT

General Manager	Joe Mouawad, P.E.
Deputy General Manager	Daniel Howell
Deputy General Manager	Nicolas Kanetis, P.E.
Assistant General Manager	Matthew Melendrez, P.E.
Assistant General Manager	Lanaya Voelz-Alexander, P.E.

RATES TEAM

Assistant General Manager /Chief Financial Officer	John Adams
Assistant Chief Financial Officer	Thomas Hays
Finance Manager	Donna Kiminki
Financial Analyst III	Kendra Sotelo
Financial Analyst II	Rebeca Robles

EASTERN MUNICIPAL WATER DISTRICT

Table of Contents

WATER SERVICE	7
WATER FIXED CHARGES.....	7
Water Daily Service Charge (DSC).....	7
Special Conditions for Water Fixed Charges – Residential Customers Only	8
Water Supply Reliability Capital Projects Charge (WCP).....	9
WATER COMMODITY CHARGES.....	11
Domestic Retail Water Budgets and Tiered Rates	11
Domestic Retail Service.....	14
Demand Agricultural Retail Service	18
Scheduled Agricultural Retail Service	20
Wholesale Service.....	21
Non-Reclaimable Waste Line (NWL) Service.....	28
Detector-Check/Fire Service	28
Construction Meter Service	29
Residential Temporary Meter Service	29
Water System Wheeling Service	30
WATER CONSERVATION PENALTIES	31
WATER SHORTAGE CONTINGENCY PLAN - WASTE WATER FINES.....	31
RECYCLED WATER SERVICE	32
RECYCLED WATER FIXED CHARGES.....	32
RECYCLED WATER COMMODITY CHARGES	33
Recycled Water Agricultural Backbone System Service/Incentives.....	34
Recycled Water On-Demand/Stabilized System Service	35
Recycled Water Agreements	36
Augmentation Water	37
SEWER SERVICE	38
Sewer Daily Service Charge (DSC).....	38
Fixed Charge for Sewer System Capital Projects.....	43
FEES-FOR-SERVICE	44
Customer Service Charges	44
Standard Drop-In Meter Installation Charges.....	44
Meter Service Charges.....	45
T-Meter Service Charges.....	45
Engineering Charges	46
Finance Charges.....	46
Resource Management Charges	46
Maps & Records Charges	46
Contract & Purchasing Charges	47
Field Service Charges	48
Development Services Charges.....	49
Right-of-Way Charges	50
Recycled Water Operations Charges	50
Sewer Charges	50
Source Control Charges.....	50
Source Control Special Charges – Pumper Discharge Fees.....	51

EASTERN MUNICIPAL WATER DISTRICT

Source Control Special Charges – Non-Reclaimable Waste Line (NWL) Fees	51
Water Operations Charges.....	52
Miscellaneous Administrative Charges	52
PENALTY FEES	53
Water Conservation Penalties for Water Runoff	53
Water Shortage Contingency Plan – Water Waste Fines.....	54
Customer Service Penalties.....	55
T-Meter Service Penalties	55
Water Operations Penalties.....	55
Recycled Water Operations Penalties.....	56
Source Control Penalties.....	56
INFRASTRUCTURE AVAILABILITY CHARGES/ASSESSMENTS	57
WATER INFRASTRUCTURE AVAILABILITY CHARGES/ASSESSMENTS	57
WASTEWATER INFRASTRUCTURE AVAILABILITY CHARGES/ASSESSMENTS.....	58
CONNECTION FEES.....	59
WATER CONNECTION FEES:	59
Water Financial Participation Charge	59
Landscape Water Financial Participation Charge.....	59
Other Water Connection Fees and Credits.....	60
SEWER CONNECTION FEES:	61
Sewer Financial Participation Charge.....	61
Sewer Treatment Plant Capacity Charge	61
Other Sewer Connection Fees	62
GENERAL OBLIGATION BOND TAX RATES	63
CURRENT ORDINANCES & RESOLUTIONS ADOPTING CERTAIN RATES, FEES, AND CHARGES	64
APPENDIX A: WATER SERVICE AREA AND IMPROVEMENT DISTRICT RATE REFERENCE	65
APPENDIX B: SEWER SERVICE AREA AND IMPROVEMENT DISTRICT RATE REFERENCE	74

EASTERN MUNICIPAL WATER DISTRICT

WATER SERVICE

Potable water service is billed through water consumption rates and two fixed charges; a Daily Service Charge and a Water Supply Reliability Capital Projects Charge.

WATER FIXED CHARGES

Water Daily Service Charge (DSC)

The DSC has two components:

1. Account Charge - Costs to recover monthly meter reading, billings, and customer service support. Assessed for all customers, regardless of water usage or meter size.
2. Demand Charge – Costs to help support repayment of debt service and water reliability needed to support the potential demand of the customer. Costs vary by meter size such as installation, maintenance and replacement and are assessed per equivalent meter size (EMS).

Water Daily Service Charge - Domestic Retail					
	Description	Meter Size	1/1/2023	1/1/2024	1/1/2025
All Residential and Non-Residential Domestic Retail Customers (unless otherwise noted)	Account Charge	All Meters	\$0.160	\$0.191	\$0.204
	Demand Charge (per EMS)	5/8"	\$0.340	\$0.365	\$0.388
		3/4"	\$0.340	\$0.365	\$0.388
		1"	\$0.520	\$0.559	\$0.594
		1 1/2"	\$1.720	\$1.847	\$1.963
		2"	\$2.760	\$2.963	\$3.150
		3"	\$5.520	\$5.926	\$6.300
		4"	\$8.630	\$9.265	\$9.849
		6"	\$17.260	\$18.530	\$19.697
		8"	\$27.620	\$29.651	\$31.520
		10"	\$41.430	\$44.477	\$47.279
		12"	\$58.250	\$62.534	\$66.474

EASTERN MUNICIPAL WATER DISTRICT

Water Daily Service Charge - Agricultural Retail					
	Description	Meter Size	1/1/2023	1/1/2024	1/1/2025
All Agricultural Retail Customers (unless otherwise noted)	Account Charge	All Meters	\$0.160	\$0.191	\$0.204
	Demand Charge (per EMS)	1" or smaller	\$0.340	\$0.365	\$0.388
		1 1/2"	\$0.590	\$0.643	\$0.684
		2"	\$0.840	\$0.921	\$0.980
		3"	\$1.840	\$2.033	\$2.164
		4"	\$2.340	\$2.589	\$2.756
		6"	\$3.340	\$3.701	\$3.940
		8"	\$3.840	\$4.257	\$4.532

Special Conditions for Water Fixed Charges – Residential Customers Only

Exceptions may be granted to water fixed charges if it can be demonstrated that the volumetric usage is consistently below that of a residential meter (5/8" – 1") for a one-year period. If so demonstrated, that portion of the DSC shall be computed at the lower meter size equivalent for the Demand Charge. The Account Charge component shall remain unchanged since the charge is not dependent on volumetric usage.

Water Daily Service Charge - Domestic Retail Special Conditions					
	Description	Meter Size	1/1/2023	1/1/2024	1/1/2025
Residential Domestic Retail Customers (when granted exception for low volumetric usage)	Account Charge	All Meters	\$0.160	\$0.191	\$0.204
	Demand Charge (per EMS)	5/8"	\$0.340	\$0.365	\$0.388
		3/4"	\$0.340	\$0.365	\$0.388
		1"	\$0.340	\$0.365	\$0.388
		1 1/2"	\$0.350	\$0.376	\$0.399
		2"	\$0.400	\$0.431	\$0.458
		3"	\$0.590	\$0.635	\$0.675

EASTERN MUNICIPAL WATER DISTRICT

Water Supply Reliability Capital Projects Charge (WCP)

The WCP is applicable to all standard domestic retail and agricultural retail water service accounts which are assessed a daily service charge. This charge will be assessed per equivalent meter size (EMS).

Water Daily Supply & Reliability Capital Projects Charge – Domestic Retail				
Description	Meter Size	1/1/2023	1/1/2024	1/1/2025
All water accounts for standard domestic retail and detector check/fire services which are assessed a daily service charge (per EMS)	5/8"	\$0.1783	\$0.200	\$0.214
	3/4"	\$0.1783	\$0.200	\$0.214
	1"	\$0.273	\$0.306	\$0.328
	1 1/2"	\$0.902	\$1.012	\$1.083
	2"	\$1.447	\$1.624	\$1.738
	3"	\$2.895	\$3.248	\$3.475
	4"	\$4.526	\$5.077	\$5.432
	6"	\$9.051	\$10.153	\$10.864
	8"	\$14.484	\$16.248	\$17.385
	10"	\$21.726	\$24.371	\$26.077
	12"	\$30.547	\$34.265	\$36.664

EASTERN MUNICIPAL WATER DISTRICT

Water Daily Supply & Reliability Capital Projects Charge – Agricultural Retail				
Description	Meter Size	1/1/2023	1/1/2024	1/1/2025
All water accounts for agricultural retail services which are assessed a daily service charge (per EMS)	5/8"	\$0.1783	\$0.200	\$0.214
	3/4"	\$0.1783	\$0.200	\$0.214
	1"	\$0.1783	\$0.200	\$0.214
	1 1/2"	\$0.27	\$0.300	\$0.321
	2"	\$0.36	\$0.400	\$0.428
	3"	\$0.71	\$0.800	\$0.856
	4"	\$0.89	\$1.000	\$1.070
	6"	\$1.25	\$1.400	\$1.498
	8" and above	\$1.43	\$1.600	\$1.712

WATER COMMODITY CHARGES

Domestic Retail Water Budgets and Tiered Rates

The District has a budget-based tiered rate structure for all residential customers and a portion of non-residential customers where the budget is based on the estimated indoor and outdoor water usage needs. The District's tiered rate structure is an increasing block structure where water is charged at increasing average rates for increasing usage. For residential customers, this rate structure has four tiers, while nonresidential customers have three tiers. Tiered water budgets are subject to adjustments in accordance with the Water Shortage Contingency Plan as referenced in Article 10 of Title 5 in the Administrative Code.

Residential Water Budgets

Residential water budgets are calculated as follows:

HOUSEHOLD SIZE CALCULATION

$BU = \text{Household Size} \times \text{GPCD} \times \text{Days} \div 748 \text{ gallons}$

LANDSCAPE IRRIGATION CALCULATION

$BU = ET \times CF \times DF \times LA \times 0.62 \times 0.001337$

Household size = Number of persons per household

GPCD = Gallons per capita (for each person) per day

Days = Days in the billing cycle

ET = Sum of observed evapotranspiration (ET) values for the billing period in inches

CF = Conservation Factor (varies by account; based on date of build)

DF = Drought Factor (currently 1.0)

LA = Landscape Area in square feet (sq. ft.)

0.62 = Conversion Factor to convert inches per sq. ft. into gallons per sq. ft.

0.001337 = Conversion Factor to convert gallons into billing units

Residential consumption rates are billed by billing units (BU), where each unit equals 100 cubic feet (CCF) or 748 gallons. Residential customers are billed at the Tier 1 rate for the first 20 percent of their monthly water budget as that is the proportional amount of local, lowest-cost supplies available. The remaining portion of the water budget is billed at the Tier 2 rate which makes up the full budgeted supply amount. Tier 3 and 4 rates cover any usage in excess of the total water budget and are based on the increased costs necessary to secure additional water supplies, as well as storage, pumping and water use efficiency programs.

EASTERN MUNICIPAL WATER DISTRICT

Non-Residential Water Budgets

Non-Residential water budgets are calculated as follows:

CHURCHES, LIBRARIES, MORTUARIES, CEMETERIES, OFFICE BUILDINGS, SCHOOLS, AND AG-HORSE FARMS:

Outdoor: $BU = LA \times ET \times CF$ (if applicable)

Indoor:

- For churches, libraries, mortuaries, cemeteries, office buildings: 80% if indoor & outdoor
- For schools: 5 gallons per student, per day
- For ag-horse farms: 47 gallons per person, per day

LOOPED LANDSCAPE:

Outdoor: $BU = LA \times ET \times CF$ (if applicable)**

Indoor: N/A

LA = Landscape Area in square feet

ET = Evapotranspiration

CF = Conservation Factor

BU = Billing units (1 BU = 100 cubic feet, or 748 gallons)

**Proportioned to each meter based on past usage

Non-residential customers are billed at the “Tier 1” rate for their monthly water budget. Tier 2 and 3 rates cover any usage in excess of the water budget and are based on the increased costs necessary to secure additional water supplies, as well as storage, pumping and water use efficiency programs. Because water usage varies considerably for non-residential customers, even within the same usage class, the District assigns each budget individually for non-residential customers, based on domestic and landscaping water needs.

Functional landscape areas include turf as a surface for recreation and sports fields. All other landscape areas are considered nonfunctional. The Non-Residential Conservation Factor (CF) is aligned for all outdoor water budgets to reflect water efficiency trends for landscapes. A landscape with less grass and more low-water landscaping along with more efficient irrigation systems would have a lower CF. When the CF decreases, so does the percentage of evapotranspiration (ET)—the varying amount of irrigation needed to keep plants alive, based on climate.

EASTERN MUNICIPAL WATER DISTRICT

In May 2022, the State Water Resources Control Board (State Board) passed a prohibition of potable water irrigation of nonfunctional turf for all Commercial, Institutional, and Industrial customers unless the nonfunctional turf is on a shared irrigation device with trees or other perennial non-turf plants, the nonfunctional turf is certified as a low water use variation meeting certain requirements, or the landscape is irrigated with recycled water. Functional turf such as parks, sports fields, and other turf used for recreation are exempt. To enforce the State Board order, EMWD has assigned:

- Eligible nonfunctional landscape areas to 50 percent CF for the ET rate.
- Functional landscape areas to a 100 percent CF for the ET rate.

Non-Residential, Non-Tiered customers that have not been converted to a tiered rate are still charged a uniform rate where each unit of water is sold at the same rate.

EASTERN MUNICIPAL WATER DISTRICT

Domestic Retail Service

Water Service Rates - Standard Domestic Residential Retail (Tiered)						
	Areas Served:	Rate Codes:		1/1/2023	1/1/2024	1/1/2025
Tiered Residential Water Commodity Rates per billing unit (BU = 1 ccf)	All areas (excluding Fruitvale)	A101 A103 A201 A301	Tier 1: Low Volume	\$1.17	\$1.28	\$1.41
			Tier 2: Budgeted	\$3.75	\$3.91	\$4.17
			Tier 3: Excessive	\$6.22	\$6.73	\$7.11
			Tier 4: Wasteful	\$12.73	\$12.95	\$13.72
	Fruitvale	A202	Tier 1: Low Volume	\$1.17	\$1.28	\$1.41
			Tier 2: Budgeted	\$3.22	\$3.53	\$3.87
			Tier 3: Excessive	\$6.22	\$6.73	\$7.11
			Tier 4: Wasteful	\$12.73	\$12.95	\$13.72

EASTERN MUNICIPAL WATER DISTRICT

Water Service Rates - Standard Domestic Non-Residential Retail (Tiered)							
	Areas Served:	Rate Codes:		1/1/2023	1/1/2024	1/1/2025	Service Information
Tiered Non-Residential Water Commodity Rates per billing unit (BU = 1 ccf)	All areas (excluding Fruitvale)	A101 A103 A201 A301	Tier 1: Budgeted	\$3.90	\$3.90	\$4.16	Applicable to residential/commercial accounts for water deliveries through facilities operated by the referenced improvement districts on Appendix A, including Perris State Park(A101), which are not classified as Tiered Rate accounts.
			Tier 2: Excessive	\$7.92	\$7.92	\$8.09	
			Tier 3: Wasteful	\$13.19	\$13.53	\$14.34	
	Fruitvale	A202	Tier 1: Budgeted	\$2.54	\$2.79	\$3.06	Applicable to residential/commercial accounts for water deliveries through facilities operated by the referenced improvement districts on Appendix A, which are not classified as Tiered Rate accounts.
			Tier 2: Excessive	\$7.78	\$7.92	\$8.09	
			Tier 3: Wasteful	\$13.19	\$13.53	\$14.34	

EASTERN MUNICIPAL WATER DISTRICT

Water Service Rates - Standard Domestic Non-Residential Retail (Non-Tiered)							
	Areas Served:	Rate Codes:		1/1/2023	1/1/2024	1/1/2025	Service Information
Non-Tiered Non-Residential Water Commodity Rates per billing unit (BU = 1 ccf)	All areas (excluding Fruitvale)	A101 A103 A201 A301		\$3.32	\$3.60	\$3.84	Applicable to residential/commercial accounts for water deliveries through facilities operated by the referenced improvement districts on Appendix A for water accounts which are not classified as Tiered Rate accounts.
	Fruitvale	A202		\$2.54	\$2.79	\$3.06	

EASTERN MUNICIPAL WATER DISTRICT

Water Service Rates - Standard Domestic Other Retail (Non-Tiered)							
	Areas Served:	Rate Codes:		1/1/2023	1/1/2024	1/1/2025	Service Information
Other Non-Tiered Water Commodity Rates per billing unit (BU = 1 ccf)	Moreno Valley, Perris Valley, Menifee, Hemet, San Jacinto, Murrieta	A104 A203 A302	Commodity only - no fixed daily charges	\$4.04	\$4.40	\$4.68	Applicable to residential/commercial accounts for water deliveries through facilities operated by the referenced improvement districts on Appendix A for water accounts where usage only is calculated.
	Moreno Valley, Perris Valley, Menifee, Hemet, San Jacinto, Murrieta	A106 A205 A303	Fixed Daily Charges only	N/A	N/A	N/A	Applicable to residential/commercial accounts for water deliveries through facilities operated by the referenced improvement districts on Appendix A for water accounts where the daily service charge only is calculated.

EASTERN MUNICIPAL WATER DISTRICT

Demand Agricultural Retail Service

For service under Demand Agricultural Retail water rates, the following special conditions will apply. In addition to EMWD Administrative Code governing the provision of Water Service Facilities:

1. Service is contingent on and must qualify for agricultural use as defined in Section 312.2.4 of the Metropolitan Water District Administrative Code (MWD Resolution No. 4106, as amended).
2. Generally:
 - A. Service is restricted to agricultural use only.
 - B. Property served should be one (1) acre or more.
 - C. Water deliveries are on a demand basis; however, usage could be restricted under extreme circumstances (i.e., drought, fire flow requirements, or other restrictions as determined necessary).

Water Service Rates - Demand Agricultural Retail (Non-Tiered)									
			Rates per ccf			Rates per acre foot			Service Information
Areas Served:	Rate Codes:		1/1/2023	1/1/2024	1/1/2025	1/1/2023	1/1/2024	1/1/2025	
All areas (excluding Fruitvale)	C101 C201 C301 C401 C403		\$3.32	\$3.60	\$3.84	\$1,446.19	\$1,568.16	\$1,672.70	Applicable to demand retail agricultural accounts for water deliveries through facilities operated by the referenced improvement district on Appendix A. C401 and C403— Applicable to prior Ag user opting out of Ag program.

EASTERN MUNICIPAL WATER DISTRICT

Water Service Rates - Demand Agricultural Retail (Non-Tiered)									
			Rates per ccf			Rates per acre foot			Service Information
Areas Served:	Rate Codes:		1/1/2023	1/1/2024	1/1/2025	1/1/2023	1/1/2024	1/1/2025	
Fruitvale	C202 C402		\$2.45	\$2.69	\$2.96	\$1,067.17	\$1,172.82	\$1,288.92	Applicable to demand retail agricultural accounts for water deliveries through facilities operated by the referenced improvement district on Appendix A. C402—Applicable to prior Ag user opting out of Ag program.
Hemet, San Jacinto	C203	Dairies-Untreated	\$2.01	\$2.19	\$2.33	\$874.07	\$952.74	\$1,013.72	Applicable to those dairies receiving raw water per the Water Supply Agreement.
Hemet, San Jacinto	C204	Dairies-Excess Untreated	\$2.68	\$2.92	\$3.11	\$1,168.78	\$1,273.97	\$1,355.50	Rate for dairies using raw water above commitment per agreement.
Hemet, San Jacinto (EM-14)	C205	Non-Dairies - Untreated	\$2.37	\$2.59	\$2.76	\$1,030.23	\$1,127.43	\$1,202.56	Rate for non-dairies using untreated water from EM-14.

EASTERN MUNICIPAL WATER DISTRICT

Scheduled Agricultural Retail Service

For service under Scheduled Agricultural Retail water rates, the following special conditions will apply, in addition to EMWD Administrative Code governing the provision of Water Service Facilities and Service:

1. Service is contingent on and must qualify for agricultural use except non-agricultural qualifying uses as defined in Section 4106 of the Metropolitan Water District’s Administrative Code as amended. Non-Agricultural qualifying uses will be determined by the District.
2. Water deliveries are generally scheduled in advance with the local water system distribution operators and with a high degree of cooperation regarding availability.
3. Water deliveries are subject to flow adjustments, restricted time-of-use limitations, and non-availability based on operational circumstances (i.e., high domestic demands, fire flow requirements, or other District restrictions as determined necessary).
4. Property served should be one (1) acre or more.

Water Service Rates - Scheduled Agricultural Retail (Non-Tiered)								
		Rates per ccf			Rates per acre foot			Service Information
Areas Served:	Rate Codes:	1/1/2023	1/1/2024	1/1/2025	1/1/2023	1/1/2024	1/1/2025	
All areas (excluding Fruitvale)	D101 D102 D201	\$3.32	\$3.60	\$3.84	\$1,446.19	\$1,568.16	\$1,672.70	Applicable for scheduled water deliveries through facilities operated by the referenced improvement district on Appendix A.
Fruitvale	D206	\$1.98	\$2.18	\$2.39	\$863.37	\$948.84	\$1,042.77	Applicable for scheduled water deliveries through facilities operated by the referenced improvement district on Appendix A, which are pressurized domestic systems.

EASTERN MUNICIPAL WATER DISTRICT

Wholesale Service

For service under Wholesale Domestic or Agricultural water rates, other agencies and/or companies must qualify and, among other conditions, meet the following requirements:

1. Be a political subdivision or a mutual water company operating a domestic system which distributes EMWD water only to those properties lying wholly within the boundaries of the EMWD, not included within the boundaries of any improvement district of the EMWD and not in conflict with or in competition to facilities operated by the EMWD; and
2. Execute a Service Agreement approved by the Board of Directors of EMWD. Said Agreement shall include, among other things, conditions provided for by the EMWD Administrative Code.
3. Service under Rate E302 is applicable for water delivered through Metropolitan Water District (MWD) EM-17 service connection to Western Municipal Water District (WMWD) for service to Elsinore Valley Municipal Water District (EVMWD) pursuant to and in accord with the provisions of Inter-Agency Agreement between EMWD and WMWD, approved October 5, 1988, as amended.

EASTERN MUNICIPAL WATER DISTRICT

Water Service Rates - Domestic Wholesale (Non-Tiered)									
		Rates per ccf				Rates per acre foot			Service Information
Areas Served:	Rate Codes:	1/1/2023	1/1/2024	1/1/2025	1/1/2023	1/1/2024	1/1/2025		
All agencies, unless otherwise noted below	E102 E104 E201 E301	Treated Water	\$3.31	\$3.60	\$3.84	\$1,442.48	\$1,568.16	\$1,672.70	E102—Applicable where Service Area 41 delivers treated water to other agencies located within Service Area 41. E104—McCanna Ranch only. E201—Applicable to treated water deliveries to other agencies from facilities of Service Area 42 which are not classified as agency ground water use of production rights. E301—Applicable to water deliveries for agencies located within Service Area 43.
Nuevo Water Company	E107		\$3.16	\$3.42	\$3.65	\$1,377.48	\$1,489.75	\$1,589.07	Applicable to Nuevo Water Company pursuant to Inter-agency Agreements between NWC and EMWD.

EASTERN MUNICIPAL WATER DISTRICT

Water Service Rates - Domestic Wholesale (Non-Tiered)									
			Rates per ccf			Rates per acre foot			Service Information
Areas Served:	Rate Codes:		1/1/2023	1/1/2024	1/1/2025	1/1/2023	1/1/2024	1/1/2025	
Western Municipal Water District (March Air Reserve)	E103	Imported Water - Operating costs only	\$0.40	\$0.44	\$0.47	\$174.24	\$191.66	\$204.73	Applicable to water deliveries to Western Municipal Water District (WMWD) for service to March Air Force Reserve. This charge represents operating costs only. Water delivered through EM-12A is billed directly to WMWD.
	E302		\$0.025	No Change	No Change	\$11.00	No Change	No Change	Applicable to water deliveries to Elsinore Valley Municipal Water District (EVMWD). This charge represents operating cost only; water delivered through EM-17 is billed directly to WMWD on behalf of EVMWD.

EASTERN MUNICIPAL WATER DISTRICT

Water Service Rates - Domestic Wholesale (Non-Tiered)									
			Rates per ccf			Rates per acre foot			Service Information
Areas Served:	Rate Codes:		1/1/2023	1/1/2024	1/1/2025	1/1/2023	1/1/2024	1/1/2025	
Soboba Settlement - City of Hemet, City of San Jacinto, Lake Hemet Municipal Water District	E207	Ground Water - Operating costs only	\$0.87	\$0.95	\$1.01	\$380.15	\$414.36	\$440.88	Applicable to the delivery of ground water (use of production rights) to the City of Hemet, City of San Jacinto, and Lake Hemet Municipal Water District through Phase I facilities pursuant to the terms of the Soboba Band of Luiseno Indians Settlement Act of 2008 and represents the O&M cost EMWD incurs to operate such facilities on behalf of the parties.
	E208	Imported Water - Operating costs only	\$0.44	\$0.48	\$0.51	\$190.20	\$207.32	\$220.59	Applicable to the delivery of imported settlement water for recharge pursuant to the terms of the Soboba Band of Luiseno Indians Settlement Act of 2008 and represents the O&M cost EMWD incurs to deliver and recharge such water on behalf of the parties.

EASTERN MUNICIPAL WATER DISTRICT

Water Service Rates - Domestic Wholesale (Non-Tiered)									
			Rates per ccf			Rates per acre foot			Service Information
Areas Served:	Rate Codes:		1/1/2023	1/1/2024	1/1/2025	1/1/2023	1/1/2024	1/1/2025	
Temecula	E401	Wholesale Administration	N/A	N/A	N/A	\$3.00	No Change	No Change	Applicable to water deliveries to Rancho California Water District pursuant to Inter-agency Agreements between RCWD and EMWD.
Fallbrook	E404	Wholesale Administration	N/A	N/A	N/A	N/A	\$11.00	\$11.00	Applicable to water deliveries to Fallbrook Public Utility District pursuant to Inter-agency Agreements between FPUC and EMWD.
All agencies	E500	Pass-through MWD Tier 2 Surcharge	N/A	N/A	N/A	\$42.00	\$199.00	\$202.00	Pass-through of the MWD Tier 2 Surcharge to wholesale agencies, when Tier 1 supply limit has been reached. Applies to imported (treated and untreated) water deliveries.

EASTERN MUNICIPAL WATER DISTRICT

Water Service Rates - Agricultural Wholesale (Non-Tiered)									
			Rates per ccf			Rates per acre foot			Service Information
Areas Served:	Rate Codes:		1/1/2023	1/1/2024	1/1/2025	1/1/2023	1/1/2024	1/1/2025	
Lake Hemet Municipal Water District	F205	Non-Soboba Settlement Water	\$2.34	\$2.49	\$2.67	\$1,021.02	\$1,083.96	\$1,164.54	Applicable to imported untreated agricultural water deliveries to other agencies within Service Area 42 and Lake Hemet Municipal Water District from EM-14 which are not settlement water deliveries.
Lake Hemet Municipal Water District (Delivery to Grant St. Pond)	F206	Soboba Settlement Water - Operating costs only	\$0.23	\$0.25	\$0.27	\$100.98	\$110.06	\$117.11	Applicable to the delivery of settlement water from EM-14 to Grant Street Pond for groundwater replenishment by Lake Hemet Municipal Water District through the Corwin Booster.
Lake Hemet Municipal Water District (Delivery up to Marshall St. Connection)	F207	Ground Water - Operating costs only	\$0.96	\$1.05	\$1.12	\$419.70	\$457.48	\$486.75	Applicable to the delivery of ground water (use of production rights) to Lake Hemet Municipal Water District up to the Marshall Street connection. Equal to delivery rate E207 plus a Corwin/Grant Booster surcharge.

EASTERN MUNICIPAL WATER DISTRICT

Water Service Rates - Agricultural Wholesale (Non-Tiered)									
			Rates per ccf			Rates per acre foot			Service Information
Areas Served:	Rate Codes:		1/1/2023	1/1/2024	1/1/2025	1/1/2023	1/1/2024	1/1/2025	
Lake Hemet Municipal Water District (Water Conveyance LHMWD Well 17 to Flume)	F208	Operating costs only	\$0.15	\$0.17	\$0.18	\$66.99	\$73.02	\$77.99	Applicable to Lake Hemet Municipal Water District use of the Raw Water Pipeline, Corwin Booster, and Grant Avenue Booster to convey water from LHMWD Well 17 to the LHMWD Flume. LHMWD pumps their own groundwater rights (ABPR) using their own well 17. Rate includes operating and repair and replacement costs
All agencies	F500	Pass-through MWD Tier 2 Surcharge	N/A	N/A	N/A	\$42.00	\$199.00	\$202.00	Pass-through of the MWD Tier 2 Surcharge to wholesale agencies, when Tier 1 supply limit has been reached. Applies to imported (treated and untreated) agricultural water deliveries.

EASTERN MUNICIPAL WATER DISTRICT

Non-Reclaimable Waste Line (NWL) Service

All NWL charges are based on Santa Ana Watershed Project Authority (SAWPA) rates. SAWPA rates are effective July 1st and are subject to adjustment when adopted by SAWPA each year. Truck disposal fees shall be assessed for all truck disposal discharges into District operated dump stations that connect into the SARI system and will be assessed an administration fee by the District as listed in the Fees-for-Service section of this schedule. Any charge billed by SAWPA for NWL disposal shall be passed on to the user. See SAWPA charge information at <https://sawpa.org/inland-empire-brine-line/documents/>.

Detector-Check/Fire Service

For service under Detector Check/Fire water rates, the following special conditions will apply, in addition to EMWD Administrative Code governing the provision of Water Service Facilities and Service:

1. This type of service shall utilize its appropriate Rate Schedule based upon the size (in inches) of the service/detector check assembly provided.
 - a. Service requires a by-pass detector check.
 - b. Water usage is restricted to fire protection only through onsite private fire hydrants and/or onsite private building sprinkler systems.

The Fixed Charge for Water Supply and Reliability Capital Projects is applicable to all detector check/fire service accounts which are assessed a daily service charge. This charge will be assessed per equivalent meter size (EMS).

Water System - Detector Check/Fire Services						
Areas Served:	Rate Codes:	Meter Size	1/1/2023	1/1/2024	1/1/2025	Service Information
All areas	J001	1"	\$0.15	No Change	No Change	Applicable for water availability for fire protection systems (detector check assemblies) to all service areas. The DSC is based upon the size of the detector check assembly under its appropriate Rate Schedule.
	J002	2"	\$0.30	No Change	No Change	
	J004	4"	\$0.60	No Change	No Change	
	J006	6"	\$0.90	No Change	No Change	
	J008	8"	\$1.20	No Change	No Change	
	J010	10"	\$1.50	No Change	No Change	
	J012	12"	\$1.80	No Change	No Change	

EASTERN MUNICIPAL WATER DISTRICT

Construction Meter Service

For service under Construction Meter water rates, including Temporary Meters (T-Meters) and construction water usage on other accounts, the following special conditions will apply, in addition to the EMWD Administrative Code governing the provision of Water Service Facilities and Service:

1. Service is generally temporary with water usage utilized as construction, grading, compaction, or related uses.
2. Service under Rate AT01 shall have no Daily Service Charge (DSC) and is available only upon authorization. This type of service is for transitory livestock herds.
3. Service under Rate AT23 is available only upon authorization by Water Operations at specified locations.

Residential Temporary Meter Service

For service under Residential Temporary Meter water rates, the following special conditions apply, in addition to EMWD Administrative Code governing the provision of Water Service Facilities and Service:

1. Service is approved when:
 - a. A permanent residential metered connection is deemed not feasible by EMWD.
 - b. Service is generally temporary for use of supplemental water.
 - c. Service is not used for dust control, construction, grading, compaction, or related uses which are supplied through a construction meter service.
2. Service shall utilize the appropriate Domestic Retail rate under its Improvement District where usage only is calculated.

EASTERN MUNICIPAL WATER DISTRICT

Water Service Rates - Temporary Meter Service						
	Areas Served:	Rate Codes:	1/1/2023	1/1/2024	1/1/2025	Service Information
Temporary Meter Water Commodity Rates per billing unit (BU = 1 ccf)	All areas (excluding Fruitvale)	AT00 AT01 AT11 AT12 AT21 AT22 AT31 AT32	\$4.04	\$4.40	\$4.68	Applicable to residential supplemental water deliveries and construction water deliveries through temporary meters from facilities that do not lie in any improvement District on Appendix A.
	Fruitvale	AT23	\$2.30	\$2.52	\$2.76	Applicable to raw water deliveries through temporary meters at specified locations in Service Area 42 as served from EM-14.

Water System Wheeling Service

In June 2013, the EMWD Board established a policy applied to those who wish to wheel potable water through the EMWD system. The policy is incorporated into the District's Administrative Code in Article 8 of Title 5.

Water System - Other Rates						
	Rate Codes:		1/1/2023	1/1/2024	1/1/2025	Service Information
Water System Wheeling	A400	Tier 1: Budgeted	\$736.33	No Change	No Change	Water Wheeling Rate per Acre Foot

WATER CONSERVATION PENALTIES

In March 2014, the EMWD Board adopted an amendment to the Administrative Code relating to water conservation policies, practices, and procedures and established fines to be assessed to all customers observed with prohibited water waste. This is incorporated into the District's Administrative Code at Title 5, Article 6, Section 5.601. Refer to "Penalty Fees" section for specific information.

WATER SHORTAGE CONTINGENCY PLAN - WASTE WATER FINES

In July 2014, the EMWD Board adopted an amendment to the Administrative Code establishing fines to be assessed to customers observed with any water waste during a declared water shortage with mandatory reduction. This is incorporated into the District's Administrative Code at Title 5, Article 10, Section 5.1009. Refer to "Penalty Fees" section for specific information.

EASTERN MUNICIPAL WATER DISTRICT

RECYCLED WATER SERVICE

Recycled water service is billed through water consumption rates and a fixed Daily Service Charge.

RECYCLED WATER FIXED CHARGES

Daily Service Charge (DSC): Recycled water users pay the same Daily Service Charges (DSCs) as potable users up to 2 inch equivalent meter size (EMS). The DSC for 3 inch EMS is set at 75 percent of the potable 3 inch DSC. The DSC for 4 inches EMS and above is set at the potable 3 inch DSC. The DSC has two components:

1. Account Charge - Costs to recover monthly meter reading, billings, and customer service support. Assessed for all customers, regardless of water usage or meter size.
2. Demand Charge – Costs to help support repayment of debt service and water reliability needed to support the potential demand of the customer. Costs vary by meter size such as installation, maintenance and replacement and are assessed per equivalent meter size (EMS).

Recycled — Daily Service Charge				
Meter Size	Description	1/1/2023	1/1/2024	1/1/2025
All Meters	Account Charge	\$0.160	\$0.191	\$0.204
5/8"	Demand Charge (per EMS)	\$0.340	\$0.365	\$0.388
3/4"		\$0.340	\$0.365	\$0.388
1"		\$0.530	\$0.559	\$0.594
1.5"		\$1.720	\$1.847	\$1.963
2"		\$2.770	\$2.963	\$3.150
3"		\$4.130	\$4.434	\$4.714
4" & Up		\$5.520	\$5.926	\$6.300

RECYCLED WATER COMMODITY CHARGES

The District's recycled water system can be split into two component systems the backbone system and the stabilized system. The backbone system is not stabilized for pressure and flow and provides service directly to most of the District's agricultural users and feeds into the stabilized system. The stabilized system has additional operational storage and pumping infrastructure allowing the District to provide on demand service to customers in the Required Reuse Area (RRA). Agricultural users connected to the backbone system may receive water at inconsistent pressures and are occasionally subject to quantity and flow restrictions depending on the amount of recycled water available within the system. In contrast, users connected to the stabilized system within the RRA have on demand access to recycled water at consistent pressure and flow. The rates charged to each type of customer reflect the level of service that they receive based on the system to which they are connected.

EASTERN MUNICIPAL WATER DISTRICT

Recycled Water Agricultural Backbone System Service/Incentives

Several rate and pricing policies are in place to promote usage by agricultural users as they provide outsized benefits as a form of wastewater disposal due to the large volumes they consume and because some users can take water during times of otherwise low demands.

- For service under Backbone System Recycled water rates, customers must be connected to the backbone system.
- Service under R43W or R63W Recycled water winter (November through April) agricultural rates are set at percentage of Recycled water summer (May through October) agricultural rates.
- Service under rates R000, R43D, or R63D is only available if designated by the General Manager. The General Manager shall have the authority to temporarily select a special rate for R000 if conditions warrant to avoid discharge and/or due to operational constraints.

Recycled — Backbone System Retail Customers					
Rate Code	Description	Rate Schedule	(Rates Per Acre Foot)		
			1/1/2023	1/1/2024	1/1/2025
R432	Summer (May-Oct) Ag — Up to 4" Meter	RW-4-ASDF	\$165.26	\$165.26	\$170.22
R632	Summer (May-Oct) Ag — Up to 6" Meter and Larger	RW-6-ASDF	\$165.26	\$165.26	\$170.22
R43W	Winter (Nov-Apr) Ag — Up to 4" Meter	RW-4-ASDF	\$96.61	\$96.61	\$99.51
R63W	Winter (Nov-Apr) Ag — Up to 6" Meter and Larger	RW-6-ASDF	\$96.61	\$96.61	\$99.51
000*	Special Rate for Surplus Water	N/A	***	***	***
R43D*	Special Winter Incentive Rate (50% of R43W — Up to 4" Meter)	RW-4-ASDF	\$48.30	\$48.30	\$49.75
R63D*	Special Winter Incentive Rate (50% of R63W — Up to 6" and Larger)	RW-6-ASDF	\$48.30	\$48.30	\$49.75

EASTERN MUNICIPAL WATER DISTRICT

Recycled Water On-Demand/Stabilized System Service

On-Demand users are connected to the stabilized system as their operations require a higher level of service than the backbone system alone can provide. To incentivize agricultural users in this circumstance to take recycled water rather than pumping groundwater, on-demand agricultural rates are set at 80-percent of the non-agricultural recycled water rate.

Recycled — Stabilized System Retail Customers					
Rate Code	Description	Rate Schedule	(Rates Per Acre Foot)		
			1/1/2023	1/1/2024	1/1/2025
R442	Demand Ag — Up to 4" Meter (80% of R462)	RW-4-DNSDF	\$499.54	\$514.53	\$529.96
R642	Demand Ag — Up to 6" Meter and Larger (80% of R662)	RW-6-DNSDF	\$499.54	\$514.53	\$529.96
R462	Non-Ag — Up to 4" Meter	RW-4-NSDF	\$624.43	\$643.16	\$662.45
R662	Non-Ag — Up to 6" Meter and Larger	RW-6-NSDF	\$624.43	\$643.16	\$662.45
*RPRC	Retail-Rate to Pechanga Band of Luiseno Indians for Non-Ag-tertiary; billed by EMWD. Includes the wheeling rate established by RCWD and paid by EMWD. Reference: Interagency agreement dated February 28, 2008, as amended.	N/A	\$624.43	\$643.16	\$662.45
*RC42	Construction and Temporary (60% of A101)	RW-CSDF-TSDF	\$867.71	\$940.90	\$1,003.62

* Not Subject to Daily Service Charge

EASTERN MUNICIPAL WATER DISTRICT

Recycled Water Agreements

To encourage the use of recycled water instead of potable or groundwater, the District has agreements with several third-party entities with rates governed by specific contracts.

Recycled — Contracted Agreements					
Rate Code	Description	Rate Schedule	(Rates Per Acre Foot)		
			1/1/2023	1/1/2024	1/1/2025
R401	Special Rate for Recycled Water Retrofit Conservation Program (75% of A101 Tiered Non-Residential—Tier 1)	N/A	\$1,225.13	\$1,274.13	\$1,359.07
R402	Special Rate for Recycled Water Retrofit Conservation Program (75% of A102 Tiered Non-Residential—Tier 1)	N/A	\$829.82	\$911.49	\$999.70
R403	Special Rate for Recycled Water Retrofit Conservation Program (75% of D101)	N/A	\$1,084.64	\$1,176.12	\$1,254.53
R500	Special Rate for Heartland (80% of A202)	N/A	\$885.14	\$972.26	\$1,066.35
R682	Department of Fish & Wildlife	RW-DFG-ASD	\$97.11	\$116.54	\$139.84
R693	Tertiary In-Lieu Ag delivery; Hemet/San Jacinto Stipulated Judgment; Rate adjusted by Consumer Price Index per agreement	N/A	\$98.82	\$110.68	\$114.00
*R4RC	Rancho California, Wholesale Rate—for Billings to RCWD & EVMWD	RW-4-RCWD	\$367.91	\$378.94	\$390.31

* Not Subject to Daily Service Charge

EASTERN MUNICIPAL WATER DISTRICT

Augmentation Water

Service under rate RAUG will occur when a customer is using water in excess of the established allocation.

Recycled — Augmentation Agreement					
Rate Code	Description	Rate Schedule	(Rates Per Acre Foot)		
			1/1/2023	1/1/2024	1/1/2025
RAUG	Special Rate for Augmentation Water (Metropolitan untreated rate)	N/A	\$855.00	\$903.00	\$972.00

EASTERN MUNICIPAL WATER DISTRICT

SEWER SERVICE

The District’s current wastewater rate structure charges each customer a fixed daily service charge and a fixed daily capital charge.

Sewer Daily Service Charge (DSC)

The daily service charges are calculated based on the number of Equivalent Dwelling Units (EDUs) assessed for that service connection. An EDU is intended to represent the typical flow from an average single family residential connection, in both volume and loadings. Sewer Equivalent Dwelling Units (Sewer EDU) as established by the District per Resolution No. 1600, as amended will be used to determine the appropriate daily/monthly service charge by multiplying the Sewer EDU by the EDU charge.

To align sewer rates with the household sizes and to consider how much each household contributes to the system, the daily service charge has a rate structure with four blocks, based on household size. Smaller than average households pay a smaller portion of the current rate, average size households pay the current rate, and larger than average households pay a larger portion of the current rate. The sewer bill will be calculated using a block factor that is multiplied by the sewer rate. For these accounts, the sewer EDU will be greater than or equal to one (1). The block factors are shown in the table below.

Block Number	Number of People in Household	Block Factor effective 1/1/2023	Block Factor effective 1/1/2024
1	1 – 2 people	0.60	0.65
2	3 – 4 people	1.00	No change
3	5 – 6 people	1.25	1.35
4	7 people or more	1.70	No change

Sewer Block factors apply only to customers on water-budget based tiered rates who are also billed directly by EMWD for sewer services.

EASTERN MUNICIPAL WATER DISTRICT

Sewer Daily Service Rates (per EDU) —Sewer Service Rendered Through Facilities of EMWD					
Areas Served:	Rate Codes:	1/1/2023	1/1/2024	1/1/2025	Service Information <i>See Appendix B for Improvement District (I.D.) details</i>
Hemet, San Jacinto – Service Area 31	S101	\$1.000	\$1.062	\$1.143	Applicable for sewage collection, transmission, treatment and disposal service rendered through facilities of I.D. 17 when no other improvement district or no other agency/assignee provides sewage collection. Applicable for sewage collection services rendered through facilities of other EMWD I.D.s located within I.D. 17 which provides sewage transmission, disposal and treatment facilities.
Moreno Valley Area – Service Area 32	S201	\$1.020	\$1.081	\$1.161	Applicable for sewage collection, transmission, treatment and disposal service rendered through facilities of I.D.'s 19, U-13 (63) or U-22 (72). This schedule also applies to areas served domestic water by Moreno Valley Water District who renders billing (by an agency agreement) on behalf of EMWD.
Sun City Area – Service Area 33	S301	\$1.040	\$1.103	\$1.184	Applicable for sewage collection, transmission, treatment and disposal service rendered through facilities of I.D. U-1 (51) when no other improvement district or no other agency/ assignee provides sewage collection. Applicable for sewer collection, transmission, treatment and disposal service rendered within the Menifee Valley Sewer Service Area No. 1. Applicable for sewage collection services rendered through facilities of other I.D.s located within I.D. U-1 (51), which provide sewage transmission, treatment, and disposal facilities.

EASTERN MUNICIPAL WATER DISTRICT

Sewer Daily Service Rates (per EDU) —Sewer Service Rendered Through Facilities of EMWD					
Areas Served:	Rate Codes:	1/1/2023	1/1/2024	1/1/2025	Service Information <i>See Appendix B for Improvement District (I.D.) details</i>
Temecula, Murrieta Area - Service Area 34	S401	\$1.170	\$1.203	\$1.252	Applicable for sewage collection, transmission, treatment and disposal service rendered through the respective facilities of I.D. C (22) or U-8 (58). This rate is also applicable to RCWD for accounts billed on behalf of EMWD (by an agency agreement) which lie within the boundaries of I.D. U-8 (58).
Perris Valley Area - Service Area 35	S501	\$1.360	\$1.369	\$1.391	Applicable for sewage collection, transmission, treatment and disposal service rendered through facilities of I.D. E (97) when no other improvement district or no other agency/assignee provides sewage collection.
Canyon Lake - Lake Hemet MWD	S601	\$1.900	\$1.982	\$2.067	Applicable for single family residential sewer service rendered through facilities of EVMWD per agency agreement dated November 4, 1968. No commercial or other service types within this service area, at the rate established by EVMWD

EASTERN MUNICIPAL WATER DISTRICT

Sewer Daily Service Rates (per EDU) — Other Agency Collection Systems					
Areas Served:	Rate Codes:	1/1/2023	1/1/2024	1/1/2025	Service Information <i>See Appendix B for Improvement District (I.D.) details</i>
City of Hemet, San Jacinto and Lake Hemet Municipal Water District	S102	\$0.940	\$1.016	\$1.095	Applicable for sewage, transmission, treatment and disposal service rendered through facilities of I.D. 17 when another agency or assignee provides sewage collection. In areas where EMWD provides water service and renders billing statements, the other agency’s sewage collection charge may be billed (by an agency agreement) by EMWD for the involved other agency as a separate item in addition to the I.D. 17 EDU charge. This rate is also applicable to the City of Hemet, San Jacinto and Lake Hemet Municipal Water District, who render billing on behalf of EMWD (by an agency agreement), where its respective agency provides sewer collection.
Sun City	S302	\$1.040	\$1.057	\$1.136	Applicable for sewage collection, transmission, treatment and disposal service rendered through facilities of I.D. U-4 (54) (Sun City), U-6 (56) (Sun City), U-15 (65) (North Sun City), and U-35 (85) (South Sun City) and where General Obligation Bonds have been issued to support the I.D. 97 (Perris Valley RWRf Improvements).
Murrieta Sewer Facilities	S403	\$1.170	\$1.203	\$1.252	Applicable for sewage collection, transmission, treatment and disposal service rendered through Murrieta Sewer Facilities located within the boundaries of Murrieta County Water District pursuant to an agreement dated March 21, 1989, between EMWD and MCWD.

EASTERN MUNICIPAL WATER DISTRICT

Sewer Daily Service Rates (per EDU) — Other Agency Collection Systems					
Areas Served:	Rate Codes:	1/1/2023	1/1/2024	1/1/2025	Service Information <i>See Appendix B for Improvement District (I.D.) details</i>
City of Perris	S502	\$1.280	\$1.323	\$1.343	Applicable for sewage transmission, treatment and disposal service rendered through facilities of I.D. E (97) when another agency or assignee provides sewage collection. In areas where EMWD provides water service and renders billing statements, the other agency sewage collection charge may be billed (by an interagency agreement) by EMWD for the involved other agency as a separate item in addition to the I.D. E (97) EDU charge. This rate is also applicable to the City of Perris which renders billing on behalf of EMWD (by an agency agreement).
Perris, Romoland, Homeland	S503	\$1.360	\$1.369	\$1.391	Applicable for sewage collection, transmission, treatment and disposal service rendered through facilities of I.D. U-29(79) (West Perris Area), F (93) (Romoland Assessment District #5), I.D. G (94) (Homeland Assessment District #7), 81 (North Sun City Area), 83 (Mead Valley Area), U-27(77) (North Perris Area).
Perris Valley	S504	\$1.280	\$1.323	\$1.343	Applicable for sewage collection, transmission, treatment and disposal service rendered through facilities of I.D. U-9 (59) (Perris Valley), and where General Obligation Bonds have been issued to support the I.D. 97 (Perris Valley RWRf Improvements).
Val Verde Unified School District (rate established by Western MWD)	S505	\$2.478 (7/1/2022)	\$2.552 (7/1/2023)	\$2.629 (7/1/2024)	Applicable for domestic sewage collected from Val Verde Unified School District which is conveyed to and treated by Western Municipal Water District (WMWD) per interagency agreement dated December 21, 2012, at the rate established by WMWD.

EASTERN MUNICIPAL WATER DISTRICT

Fixed Charge for Sewer System Capital Projects

The daily Fixed Charge for Sewer System Capital Projects charge is applicable to all sewer service accounts when rendered through facilities of EMWD. This charge does not apply to sewer service accounts that have sewage rendered by an agency other than EMWD. This charge will be assessed per equivalent dwelling unit (EDU).

Sewer Daily System Capital Projects Charge (per Equivalent Dwelling Unit - EDU)	1/1/2023	1/1/2024	1/1/2025
All Sewer Service Accounts for Sewer Service Rendered Through Facilities of EMWD	\$0.11967	\$0.141	\$0.149

EASTERN MUNICIPAL WATER DISTRICT

FEES-FOR-SERVICE

Customer Service Charges

Rate Code	Description	Fee as of 1/1/23	Fee as of 1/1/24
CS-DP	Customer Deposit Minimum (refundable upon account closure)	\$150	No Change
CS-27	Broken Lock	\$11	No Change
CS-29	Broken Angle Stop	\$865	\$911
CS-30	Broken Locking Device	\$73	\$77
CS-33	Disconnect Service at Main	\$3,869	\$4,751
CS-41	Liens Against Property	\$115	\$122
CS-43	After Hours Service Restoration Charge	\$161	\$170
CS-44	Additional Trip Charge	\$104	\$110
CS-60	Late Fee	\$25	No Change
CS-61	Reconnect Fee	\$54	\$57
CS-62	Door Hanger - Disconnection	\$15	\$16

Standard Drop-In Meter Installation Charges

Rate Code	Description	Fee as of 1/1/23	Fee as of 1/1/24
CS-11	5/8" or 3/4" Meter (includes MXU)	\$285	No Change
CS-12	1" Meter (includes MXU)	\$372	\$392
CS-13	1 1/2" Meter (includes MXU)	\$627	\$661
CS-14	2" Meter (includes MXU) Multi-Jet	\$837	\$882
CS-15	2" Meter (includes MXU) Turbine	\$1,297	\$1,366

EASTERN MUNICIPAL WATER DISTRICT

Meter Service Charges

Rate Code	Description	Fee as of 1/1/23	Fee as of 1/1/24
CS-19	Meter Testing – 1" and Smaller	\$203	\$214
CS-20	Meter Testing – 1 ½" and 2"	\$243	\$256
CS-21	Meter Testing – 3" and Larger	\$297	\$313
CS-51	Damaged or Missing MXU Device	\$147	\$155
CS-53	AMR Meter Damaged/Missing – 5/8" Meter with MXU	\$288	\$304
CS-53	AMR Meter Damaged/Missing – 5/8" Meter without MXU	\$190	\$201
CS-53	AMR Meter Damaged/Missing – 1" Meter with MXU	\$375	\$395
CS-53	AMR Meter Damaged/Missing – 1" Meter without MXU	\$277	\$292
CS-53	AMR Meter Damaged/Missing – 1 1/2" Meter with MXU	\$572	\$603
CS-53	AMR Meter Damaged/Missing – 1 1/2" Meter without MXU	\$474	\$499
CS-53	AMR Meter Damaged/Missing – 2" Multi-jet Meter with MXU	\$782	\$824
CS-53	AMR Meter Damaged/Missing – 2" Multi-jet Meter without MXU	\$684	\$721
CS-53	AMR Meter Damaged/Missing – 2" Turbo Meter with MXU	\$1,242	\$1,308
CS-53	AMR Meter Damaged/Missing – 2" Turbo Meter without MXU	\$1,144	\$1,205

T-Meter Service Charges

Rate Code	Description	Fee as of 1/1/23	Fee as of 1/1/24
CS-6	T-Meter Set-up – 2 ½"	\$353	\$372
CS-6	T-Meter Deposit – 2 ½"	\$600	No Change
CS-7	T-Meter Set-up (Residential) – 5/8" or 1"	\$277	\$292
CS-7	T-Meter Deposit (Residential) – 5/8" or 1"	\$200	No Change
CS-22	T-Meter Move, Trip Charge, Illegal Fee	\$95	\$101
CS-38	T-Meter – Broken Chain/Lock/Clamshell	\$206	\$217
CS-39	Replacement T-Meter	\$547	\$576
CS-40	Repair T-Meter Swivel/Register	\$342	\$361

EASTERN MUNICIPAL WATER DISTRICT

Engineering Charges

Rate Code	Description	Fee as of 1/1/23	Fee as of 1/1/24
ENG-1	Single Lot Residential Lateral Connection Inspection Fee – At Main Line to Property Line	\$632	\$921
ENG-2	Interagency Permit	\$1,125	\$1,185
ENG-3	As Built – Tracts & Pipelines (per Sheet)	\$150	\$158
ENG-5	Single Lot Residential Lateral Connection Inspection Fee – At Property Line (existing lateral)	\$493	\$519
ENG-7	Water/Sewer Connection Inspection Fee – At Property Line (Existing Lateral)	\$796	\$838
ENG-8	Water/Sewer/Recycled Connection Inspection Fee – At Main Line to Property Line	\$952	\$1,378
ENG-10	TV Inspection Fee – Per Linear Foot	\$2.00	No Change

Finance Charges

Rate Code	Description	Fee as of 1/1/23	Fee as of 1/1/24
FIN-1	Non-Sufficient Funds (NSF) Charge	\$25	No Change
FIN-2	EMWD Administrative Processing Fee	\$42	\$45
FIN-3	Delinquent Bills on Tax Roll	\$45	\$48

Resource Management Charges

Rate Code	Description	Fee as of 1/1/23	Fee as of 1/1/24
RM-1	Water Supply Assessment Report	\$1,377	\$1,450

Maps & Records Charges

Rate Code	Description	Fee as of 1/1/23	Fee as of 1/1/24
MR-3	Annexation Fees – Admin Expense (per Acre)	\$200	No Change

EASTERN MUNICIPAL WATER DISTRICT

Contract & Purchasing Charges

Rate Code	Description	Fee as of 1/1/23	Fee as of 1/1/24
CP-1	Fringe Area Annexation Processing Charge	\$4,000	No Change
CP-2	Cell Tower Lease Application Charge	\$4,000	No Change
CP-3	Cell Tower Lease Amendment Charge	\$2,000	No Change

EASTERN MUNICIPAL WATER DISTRICT

Field Service Charges

Rate Code	Description	Fee as of 1/1/23	Fee as of 1/1/24
FS-1	Install 6" Standard Fire Hydrant	\$9,107	\$10,522
FS-2	Install 6" Super Fire Hydrant	\$9,570	\$11,030
FS-3	Upgrade Fire Hydrant	\$2,422	\$2,805
FS-4	Install 4" Blow-off (Wharf-head) Hydrant	\$7,623	\$9,057
FS-5	Standard Full Service Meter Installation – 5/8" or 3/4" Meter (includes MXU)	\$4,041	\$4,771
FS-6	Standard Full Service Meter Installation – 1" Meter (includes MXU)	\$4,751	\$5,340
FS-7	Standard Full Service Meter Installation – 1 1/2" Meter (includes MXU)	\$5,335	\$6,085
FS-8	Standard Full Service Meter Installation – 2" Meter (includes MXU) Multi-Jet	\$6,275	\$7,359
FS-9	Standard Full Service Meter Installation – 2" Meter (includes MXU) – Turbine	\$6,416	\$7,655
FS-10	Temporary 4" Construction Meter on Fire Hydrant	\$3,321	\$3,794
FS-11	Install Hot Tap on Water Main (Size 4")	\$3,351	\$3,528
FS-11	Install Hot Tap on Water Main (Size 6")	\$4,618	\$4,862
FS-11	Install Hot Tap on Water Main (Size 8")	\$5,289	\$5,568
FS-11	Install Hot Tap on Water Main (Size 12")	\$6,464	\$6,805
FS-12	Temporary 6" Construction Meter on Fire Hydrant	\$3,543	\$4,053
FS-14	Relocate Meter/Water Lateral Within 10 Feet	\$1,662	\$2,050
FS-15	Relocate Fire Hydrant / Blow-off Within 10 Feet	\$2,919	\$3,485
FS-16	Non-Standard Site Conditions (traffic control, asphalt, hard soil) may require additional payment. Applies to fixed fees FS-1 through FS-9, FS-15, FS-17. Deposit *	Varies	No Change
FS-17	Large Meter Installation (Size 3" or Above) *	Varies	No Change
FS-20	Asbestos Survey	\$795	\$837

*Services noted as such are billed at actual cost. If the actual cost is less than the deposit amount, a refund will be initiated.

EASTERN MUNICIPAL WATER DISTRICT

Development Services Charges

Rate Code	Description	Fee as of 1/1/23	Fee as of 1/1/24
DS-1	Will-Serve Charges	\$89	\$94
DS-2	Fire Flow Computer Model – One Single Family Residential Lot	\$366	\$386
DS-3	Plan of Service / Plan Check / Plan Review – Deposit *	Varies	No Change
DS-4	Unmetered Construction Water (per lot)	\$133	\$141
DS-5	Addenda Processing Fee	\$213	\$225
DS-6	Fire Flow Computer Model – All uses, demands and durations except for “One Single Family Residential Lot”	\$826	\$870
DS-7	Assessment District / Community Facilities District (AD/CFD) Formation Deposit	Varies	No Change
DS-8	Application For Service – Commercial/Industrial/Institutional/Multi-Unit	\$1,570	\$1,653
DS-9	Application For Service - Tenant Improvement/Landscape Services/Residential Single Lot	\$630	\$664
DS-10	Expedited Application for Service Surcharge	\$481	\$507
DS-11	Connection Fee Estimate (Commercial/Industrial/Institutional)	\$414	\$436
DS-12	First Release/Clearance - New Development/Shell Building	\$542	\$554
DS-13	First Release/Clearance - Tenant Improvement/Business License	\$292	\$308
DS-14	Developer Standard Service and Facilities Agreement Processing	\$827	\$871
DS-15	Expedited Developer Service and Standard Facilities Agreement Surcharge	\$426	\$449

**Services noted as such are billed at actual cost. If the actual cost is less than the deposit amount, a refund will be initiated.*

EASTERN MUNICIPAL WATER DISTRICT

Right-of-Way Charges

Rate Code	Description	Fee as of 1/1/23	Fee as of 1/1/24
ROW-1	Quitclaim of Easements	\$1,079	\$1,136

Recycled Water Operations Charges

Rate Code	Description	Fee as of 1/1/23	Fee as of 1/1/24
RW-1	Recycled Water Excess Use Over Allotment	\$346	\$365
RW-4	Recycled Water Service Turn-off (by Water Ops)	\$376	\$396
RW-5	After Hours Restoration Charge (by Water Ops)	\$327	\$345

Sewer Charges

Rate Code	Description	Fee as of 1/1/23	Fee as of 1/1/24
SWR-1	Sewage Spill / Lateral Backup – Daytime hours	\$892	\$939
SWR-2	Sewage Spill / Lateral Backup – After hours	\$2,255	\$2,374

Source Control Charges

Rate Code	Description	Fee as of 1/1/23	Fee as of 1/1/24
SC-1	Waste Discharge Application	\$406	\$428
SC-2	Annual Permit Fee – Significant Industrial User	\$2,266	\$2,386
SC-3	Annual Permit Fee – Non-Significant Industrial User	\$612	\$645
SC-6	Annual Permit Fee – Liquid Waste Hauling	\$244	\$257
SC-7	Plan Check Review & Inspection (Complex)	\$701	\$738
SC-8	Plan Check Review & Inspection (Regular)	\$314	\$331
SC-9	Non-Compliance Inspection	\$459	\$484
SC-10	Non-Compliance Sampling	\$459	\$484

EASTERN MUNICIPAL WATER DISTRICT

Source Control Special Charges – Pumper Discharge Fees

Rate Code	Description	Fee as of 1/1/23	Fee as of 1/1/24
SC-14	Annual Permit Fee – Liquid Waste Hauling Truck Fee	\$104	\$110
SC-15	Permit Revision Fee – Revise Truck on Current Permit	\$162	\$171
SC-18	Administrative Fee Per Load – Domestic Septic Tank & Chemical Toilet Wastes	\$9	\$10
SC-19	Waste Processing Fee Per Gallon – Domestic Septic Tank & Chemical Toilet Waste	\$0.08	\$0.09

Source Control Special Charges – Non-Reclaimable Waste Line (NWL) Fees

Rate Code	Description	Fee as of 1/1/23	Fee as of 1/1/24
NWL-1	NWL Notice of Violation	\$946	\$996
NWL-2	NWL Violation Meeting	\$814	\$857
NWL-3	NWL Consent Order	\$632	\$666
NWL-4	NWL Compliance Order	\$1,221	\$1,286
NWL-5	NWL Cease and Desist Order	\$946	\$996
NWL-7	NWL Annual Permit Fee – Significant Industrial User (NWL-SIU)	\$3,874	\$4,078
NWL-8	NWL Annual Permit Fee – Non-Significant Industrial User (NWL-NSIU)	\$1,146	\$1,207
NWL-10	Administrative Fee per Gallon of Truck Disposal into NWL	\$0.010	\$0.011

EASTERN MUNICIPAL WATER DISTRICT

Water Operations Charges

Rate Code	Description	Fee as of 1/1/23	Fee as of 1/1/24
WO-1	Initial Backflow Assembly Test	\$176	\$186
WO-2	Non-Compliance Backflow Assembly Test	\$458	\$483
WO-4	Re-Test Backflow Assembly	\$174	\$184
WO-5	Repair Backflow Assembly	Varies	No Change
WO-6	Priority Backflow Assembly Test	\$244	\$257
WO-7	Service Turn-off – Backflow Noncompliance	\$129	\$136
WO-8	Air Gap Inspection & Permit Fee	\$76	\$81
WO-10	Trip Charge for Air Gap Inspection; Backflow Test No-Show; Cross Connection Test No-Show	\$88	No Change
WO-50	Daytime Call Response – Water Ops	\$152	\$161
WO-51	After Hours Call Response – Water Ops	\$406	\$428
WO-52	Field Pressure Test – Water Ops	\$156	\$165
WO-53	Seasonal Off/On Service Request – Ag Meters 6" +	\$64	\$68
WO-54	Deposit: Key for Overhead Fill Station	\$100	No Change

Miscellaneous Administrative Charges

Rate Code	Description	Fee as of 1/1/23	Fee as of 1/1/24
ADM-1	Public Records Request – Copies per Page	\$0.25	No Change

EASTERN MUNICIPAL WATER DISTRICT

PENALTY FEES

Water Conservation Penalties for Water Runoff

In March 2014, the EMWD Board adopted an amendment to the Administrative Code relating to water conservation policies, practices and procedures and established fines to be assessed to all customers observed with prohibited water waste. This is incorporated into the District's Administrative Code at Title 5, Article 6, Section 5.601.

Customer Type	Fines	Description
Single-Family Residential Accounts	\$25	Third violation
Single-Family Residential Accounts	\$50	Fourth violation
Single-Family Residential Accounts	\$100	Fifth and any subsequent violation
Multi-Family, Commercial, Institutional, Agricultural, and Landscape Accounts	\$100	Third violation
Multi-Family, Commercial, Institutional, Agricultural, and Landscape Accounts	\$200	Fourth violation
Multi-Family, Commercial, Institutional, Agricultural, and Landscape Accounts	\$300	Fifth and any subsequent violation

EASTERN MUNICIPAL WATER DISTRICT

Water Shortage Contingency Plan – Water Waste Fines

In July 2014, the EMWD Board adopted an amendment to the Administrative Code establishing fines to be assessed to customers with any observed water waste during a declared water shortage with mandatory reduction. This is incorporated into the District’s Administrative Code at Title 5, Article 10, Section 5.1009.

Stage	Customer Type	Fines Effective 10/1/14	Description
Stage 3: Mandatory Waste Reduction	Single-family residential accounts	\$25	Second violation
Stage 3: Mandatory Waste Reduction	Single-family residential accounts	\$50	Third violation
Stage 3: Mandatory Waste Reduction	Single-family residential accounts	\$100	Fourth and any subsequent violation
Stage 3 : Mandatory Waste Reduction	Multi-family, Commercial, Institutional, Agricultural, and Landscape accounts	\$100	Second violation
Stage 3: Mandatory Waste Reduction	Multi-family, Commercial, Institutional, Agricultural, and Landscape accounts	\$200	Third violation
Stage 3: Mandatory Waste Reduction	Multi-family, Commercial, Institutional, Agricultural, and Landscape accounts	\$300	Fourth and any subsequent violation
Stage 4: Mandatory Outdoor Reduction	Single-family residential accounts	\$50	Second violation
Stage 4: Mandatory Outdoor Reduction	Single-family residential accounts	\$100	Third violation
Stage 4: Mandatory Outdoor Reduction	Single-family residential accounts	\$200	Fourth and any subsequent violation
Stage 4: Mandatory Outdoor Reduction	Multi-family, Commercial, Institutional, Agricultural, and Landscape accounts	\$200	Second violation
Stage 4 : Mandatory Outdoor Reduction	Multi-family, Commercial, Institutional, Agricultural, and Landscape accounts	\$400	Third violation
Stage 4 : Mandatory Outdoor Reduction	Multi-family, Commercial, Institutional, Agricultural, and Landscape accounts	\$600	Fourth and any subsequent violation

EASTERN MUNICIPAL WATER DISTRICT

Customer Service Penalties

Rate Code	Description	Fee as of 1/1/20	Fee as of 1/1/24
CS-28	Illegal Service Restoration Penalty (Potable), 1st offense	\$150	No Change
CS-28	Illegal Service Restoration Penalty (Potable), 2nd offense	\$300	No Change
CS-28	Illegal Service Restoration Penalty (Potable), 3rd offense	\$450	No Change
CS-28	Illegal Service Restoration Penalty (Potable), 4th offense	\$600	No Change
CS-28	Illegal Service Restoration Penalty (Potable), 5th offense	\$750	No Change
CS-28	Illegal Service Restoration Penalty (Potable), 6th offense	\$900	No Change
CS-63	Unauthorized Installation/Connection/Use Penalty – Potable – 1 st Offense	\$1,000	No Change
CS-63	Unauthorized Installation/Connection/Use Penalty – Potable – 2 nd Offense	\$2,000	No Change
CS-63	Unauthorized Installation/Connection/Use Penalty – Potable – 3 rd Offense	\$3,000	No Change
CS-63	Unauthorized Installation/Connection/Use Penalty – Potable – 4 th Offense	\$4,000	No Change
CS-63	Unauthorized Installation/Connection/Use Penalty – Potable – 5 th Offense	\$5,000	No Change
CS-63	Unauthorized Installation/Connection/Use Penalty – Potable – 6 th Offense	\$6,000	No Change

T-Meter Service Penalties

Rate Code	Description	Fee as of 1/1/20	Fee as of 1/1/24
CS-54	Late Fee – Failure to report Floater T-Meter Read	\$25	No Change
CS-55	Late Fee – Failure to Return Floater T-Meter for Inspection	\$55	No Change
CS-56	Daily Late Fee – Expired Floater T-Meter Permit	\$10	No Change

Water Operations Penalties

Rate Code	Description	Fee as of 1/1/20	Fee as of 1/1/24
WO-9	Air Gap Non-Compliance Fee	\$200	No Change
WO-12	Non-Compliance Backflow Fine (Monthly)	\$200	No Change

EASTERN MUNICIPAL WATER DISTRICT

Recycled Water Operations Penalties

Rate Code	Description	Fee as of 1/1/20	Fee as of 1/1/24
RW-2	Recycled Water Non-Compliant / Unapproved Use	\$1,000	No Change
RW-3	Unauthorized Installation/Connection/Use Penalty – Recycled – 1st Offense	\$1,000	No Change
RW-3	Unauthorized Installation/Connection/Use Penalty – Recycled – 2nd Offense	\$2,000	No Change
RW-3	Unauthorized Installation/Connection/Use Penalty – Recycled – 3rd Offense	\$3,000	No Change
RW-3	Unauthorized Installation/Connection/Use Penalty – Recycled – 4th Offense	\$4,000	No Change
RW-3	Unauthorized Installation/Connection/Use Penalty – Recycled – 5th Offense	\$5,000	No Change
RW-3	Unauthorized Installation/Connection/Use Penalty – Recycled – 6th Offense	\$6,000	No Change
RW-8	Illegal Service Restoration Penalty – Recycled – 1st Offense	\$1,000	No Change
RW-8	Illegal Service Restoration Penalty – Recycled – 2nd Offense	\$2,000	No Change
RW-8	Illegal Service Restoration Penalty – Recycled – 3rd Offense	\$3,000	No Change
RW-8	Illegal Service Restoration Penalty – Recycled – 4th Offense	\$4,000	No Change
RW-8	Illegal Service Restoration Penalty – Recycled – 5th Offense	\$5,000	No Change
RW-8	Illegal Service Restoration Penalty – Recycled – 6th Offense	\$6,000	No Change
RW-9	Recycled Water Unauthorized Discharge Penalty – Billed at Actual Cost	Varies	No Change

Source Control Penalties

Rate Code	Description	Fee as of 1/1/20	Fee as of 1/1/24
SC-21	Administrative Civil Penalty – Reporting Violation – Note (1)	\$2,000	No Change
SC-22	Administrative Civil Penalty – Compliance Schedule Violation – Note (1)	\$3,000	No Change
SC-23	Administrative Civil Penalty – Discharge Violation per Day – Note (1)	\$5,000	No Change
SC-24	Administrative Civil Penalty – Discharge Violation per Gallon – Note (1)	\$10	No Change

Note (1): Source control rate codes SC-21, SC-22, SC-23, and SC-24 charges are established according to section 54740.5 of the California Government Code.

EASTERN MUNICIPAL WATER DISTRICT

INFRASTRUCTURE AVAILABILITY CHARGES/ASSESSMENTS

Water Infrastructure Availability Assessment and Wastewater Infrastructure Availability Assessment Charge Programs constitute an important part of the financial programs for the General District and many other Improvement Districts.

Infrastructure Availability Assessments are included annually on the property tax rolls, as set through a public hearing process.

Water Infrastructure Availability Charges/Assessments

<u>Water Programs</u>			<u>Assessment or Charge/Acre</u>		
			<u>Zone of Benefit</u>		
			<u>1</u>	<u>2</u>	<u>3</u>
EMWD		(General District)	\$4.00	\$1.60	\$ 0.60
I.D. No.	8*	(Good Hope Area)	2.00	1.00	-
I.D. No.	9*	(Quail Valley Area)	7.50	3.74	1.50
I.D. No.	11*	(Mission Canyon Area)	3.00	1.50	-
I.D. No.	13*	(Perris Valley Area)	1.00	0.50	-
I.D. No.	14*	(Diamond Valley Area)	3.00	1.50	-
I.D. No.	15*	(Bautista Canyon Area)	5.00	-	-
I.D. No.	16*	(Mead Valley Area)	2.00	1.00	-
I.D. No.	18*	(Juniper Flats/Homeland/Winchester Area)	2.00	1.00	-
I.D. No.	21*	(Menifee Valley Area)	5.00	3.00	1.00
I.D. No.	U-5*	(Dairyland Area)	5.00	-	-
I.D. No.	U-7*	(Soboba Hot Springs Area)	7.50	-	-
I.D. No.	U-17*	(Ryan Field)	3.00	-	-
I.D. No.	U-20*	(N. San Jacinto Area)	10.00	-	-
I.D. No.	U-26*	(Tucalota Creek Area)	15.00	10.00	2.50
I.D.	C*	(Murrieta Hot Springs)	10.00	-	-
I.D.	D*	(Northern Ca. Wat. Int. Program)	6.00	2.40	.90

**And Adjacent Lands*

NOTE: Assessments or Charges must be divisible by two.

EASTERN MUNICIPAL WATER DISTRICT

Wastewater Infrastructure Availability Charges/Assessments

<u>Sewer Programs</u>			<u>Assessment or Charge/Acre</u>		
			<u>Zone of Benefit</u>		
			<u>1</u>	<u>2</u>	<u>3</u>
I.D. No.	19*	(Central Moreno Valley/Sunnymead Area)	\$ 7.50	\$ -	\$ -
I.D. No.	20*	(Hemet-San Jacinto Collector No. 1)	10.00	-	-
I.D. No.	25*	(Temecula Townsite)	10.00	-	-
I.D. No.	U- 8*	(Rancho California Regional Sewer No. 1)	10.00	5.00	2.50
I.D. No.	U- 9*	(Perris Valley Area)	10.00	-	-
I.D. No.	U-10*	(Canyon Lake Area)	10.00	-	-
I.D. No.	U-12*	(Hemet-San Jacinto Collector No. 2)	10.00	-	-
I.D. No.	U-13*	(W. Moreno Valley/W. Sunnymead Area)	15.00	10.00	-
I.D. No.	U-14*	(Hemet-San Jacinto Collector No. 3)	10.00	-	-
I.D. No.	U-15*	(Sun City/Meniffee Area)	10.00	-	-
I.D. No.	U-16*	(Hemet-San Jacinto Collector No. 4)	10.00	-	-
I.D. No.	U-19*	(Hemet-San Jacinto Collector No. 6)	10.00	-	-
I.D. No.	U-21*	(Hemet-San Jacinto Collector No. 7)	10.00	-	-
I.D. No.	U-22*	(East Moreno Valley Area)	15.00	2.50	-
I.D. No.	U-25*	(Tucalota Creek/Murrieta Area)	15.00	10.00	2.50
I.D. No.	U-27*	(North Perris Valley Area)	15.00	-	-
I.D. C*		(Murrieta Hot Springs Area)	10.00	-	-
I.D. E*		(City of Perris)	15.00	7.50	-
I.D. F*		(Romoland/Sun City Area)	15.00	-	-
I.D. G*		(Homeland/Winchester Area)	15.00	-	-

**And Adjacent Lands*

NOTE: Assessments or Charges must be divisible by two.

EASTERN MUNICIPAL WATER DISTRICT

CONNECTION FEES

Water Connection Fees:

Meter Fee: See Standard Drop-In Meter Installation Charges are paid to EMWD for meters 2" or smaller; meters larger than 2" are supplied by the developer contractor as per EMWD's approved materials list.

Water Financial Participation Charge

Area	Rate as of 1/1/2023	Rate as of 1/1/2024
General District	\$7,235/EMS	\$7,416/EMS
Perris I	\$6,152/EMS	\$6,306/EMS
Perris II	\$6,616/EMS	\$6,781/EMS
Perris III	\$6,747/EMS	\$6,916/EMS
U-3-1 w/U-3	\$9,675/EMS	\$9,917/EMS
U-3-1 w/o U-3	\$9,849/EMS	\$10,096/EMS
AD8 w/ ID 18	\$10,222/EMS	\$10,478/EMS
AD8 w/o ID 18	\$10,361/EMS	\$10,620/EMS
Conestoga 1719PZ	\$7,235/EMS General District \$4,142/Water Benefit EDU *	\$7,416/EMS General District \$4,246/Water Benefit EDU *
Canyon Cove Reservoir	*\$7,235/EMS General District \$2,135/Water Benefit EDU *	\$7,416/EMS General District \$2,135/Water Benefit EDU *

**Benefit EDUs as determined at the time of special area formation, as amended.*

Landscape Water Financial Participation Charge

Area	Rate as of 1/1/2023	Rate as of 1/1/2024
General District	\$6,568/EMS	\$6,732/EMS

EASTERN MUNICIPAL WATER DISTRICT

Other Water Connection Fees and Credits

Area		Rate as of 1/1/2023	Rate as of 1/1/2024
Recycled Water Supply Development Fee*		\$393/EDU	\$403/EDU
Developer Donated Storage Credit		(\$1,203/EMS)	(\$1,233/EMS)
Frontage Fees Potable Water – 8"	Per Foot (Unit Cost Evaluation)	\$70	\$72
Frontage Fees Potable Water – 12"		\$80	\$82
Frontage Fees Recycled Water – 8"		\$66	\$68
Frontage Fees Recycled Water – 12"		\$68	\$70

**For apartment/condo, institution, commercial or industrial projects, the Recycled Water Supply Development fee will be based on the number of calculated Sewer EDUs. In the unlikely event that a commercial project is "water only", the fee will be based on the number of EMSs.*

EASTERN MUNICIPAL WATER DISTRICT

Sewer Connection Fees:

Sewer Financial Participation Charge

Area	Rate as of 1/1/2023	Rate as of 1/1/2024
General District	\$3,391/EDU	\$3,476/EDU
N. San Jacinto Area	\$5,421/EDU	\$5,506/EDU
Murrieta Relief Area Sewer (MARS) Area A	\$5,181/EDU	\$5,311/EDU
Murrieta Relief Area Sewer (MARS) Area B & Physicians Hospital of Murrieta	\$6,698/EDU	\$6,865/EDU
Murrieta Relief Area Sewer (MARS) Area B (standalone)	\$5,640/EDU	\$5,781/EDU
Cottonwood Lift Station	\$4,211/EDU	\$4,296/EDU
Anza Regional Sewer	\$6,014/EDU	\$6,164/EDU
Wine Country	\$11,438/EDU	\$11,724/EDU
Olive Avenue, Parallel Sewer Pipeline and Oversizing in lieu of Strengthening	\$6,217/EDU	\$6,372/EDU
Olive Avenue, Parallel Pipeline	\$4,712/EDU	\$4,830/EDU
Temecula Old Town	\$14,988/EDU	\$15,363/EDU
Conestoga Salt Creek Sewer	\$3,391/EDU General District \$1,059/Sewer Benefit EDU*	\$3,476/EDU General District \$1,086/Sewer Benefit EDU*

**Benefit EDUs as determined at the time of special area formation, as amended.*

Sewer Treatment Plant Capacity Charge

Area	Rate as of 1/1/2023	Rate as of 1/1/2024
General District	\$6,428/EDU	\$6,589/EDU

EASTERN MUNICIPAL WATER DISTRICT

Other Sewer Connection Fees

Area		Rate as of 1/1/2023	Rate as of 1/1/2024
Recycled Water Supply Development Fee*		\$393/EDU	\$403/EDU
Frontage Fees Gravity Sewer – 8"	Per Foot (Unit Cost Evaluation)	\$61	\$63
Frontage Fees Gravity Sewer – 10"		\$83	\$85
Frontage Fees Gravity Sewer – 12"		\$96	\$98

**For apartment/condo, institution, commercial or industrial projects, the Recycled Water Supply Development fee will be based on the number of calculated Sewer EDUs. In the unlikely event that a commercial project is “water only”, the water supply development fee will be based on the number of EMSs.*

The estimated amounts of all applicable Financial Participation Charges and other District Charges shall be subject to adjustment to reflect the then per unit amount applicable at the time the involved portion(s)/unit(s) have been completed and service is requested, all as determined by the District. The sponsor/developer must agree to pay the full adjusted amount of such charges prior to District’s acceptance of the facilities and provision of service to the involved unit(s).

A property is considered “completed” when water and/or sewer facilities have been accepted and placed into service by the District, and units have been certified for occupancy by the County of Riverside or the involved city (as appropriate).

EASTERN MUNICIPAL WATER DISTRICT

GENERAL OBLIGATION BOND TAX RATES

Improvement District	Tax Rate (per \$100/Assessed Value) as of July 2018	Tax Rate (per \$100/Assessed Value) as of July 2019	Tax Rate (per \$100/Assessed Value) as of July 2020	Tax Rate (per \$100/Assessed Value) as of July 2021	Tax Rate (per \$100/Assessed Value) as of July 2022	Tax Rate (per \$100/Assessed Value) as of July 2023
15	0.040	0.040	0.040	0.040	0.0320	0.0320
18	0.026	0.026	0.026	0.026	0.0208	0.0208
22	0.003	0.003	0.003	0.003	0.0024	0.0024
U-2	0.010	0.010	0.010	0.010	0.0075	0.0075
U-4	0.050	0.050	0.050	0.050	0.0375	0.0375
U-5	0.016	0.016	0.016	0.016	0.0088	0.0088
U-6	0.050	0.050	0.050	0.050	0.0375	0.0375
U-7	0.023	0.023	0.023	0.023	-	-
U-8	0.002	0.002	0.002	0.002	0.0015	0.0015
U-9	0.050	0.050	0.050	0.050	0.0350	0.0350
U-10	0.033	0.033	0.033	0.033	0.0248	0.0248
U-12	0.008	0.008	0.008	0.008	0.0072	0.0072
U-14	0.020	0.020	0.020	0.020	0.0180	0.0180
U-21	0.020	0.020	0.020	0.020	0.0150	0.0150
U-22	0.010	0.010	0.010	0.010	0.0060	0.0060
U-35	0.019	0.019	0.019	0.019	0.0086	0.0086
U-36	0.019	0.019	0.019	0.019	0.0086	0.0086

CURRENT ORDINANCES & RESOLUTIONS ADOPTING CERTAIN RATES, FEES, AND CHARGES

Ordinance 2023-004, Revising Certain Water and Sewer Rate Schedules and Special Conditions

Ordinance 2023-006, Revising Certain Recycled Water Rate Schedules

Ordinance 2023-007, Revising Certain Financial Participation Charges and Fees-for-Service Rate Schedules

Resolution 2023-109, Establishing Assessment District Assessments, Community Facilities District Special Taxes

Resolution 2023-110, Establishing General Obligation Bond Tax Rates

EASTERN MUNICIPAL WATER DISTRICT

APPENDIX A: WATER SERVICE AREA AND IMPROVEMENT DISTRICT RATE REFERENCE

Rate Type	Service Area (SA)	Rate	Improvement District (ID)	Service Area/Improvement District Information
Standard Domestic Retail	SA 41 Moreno Valley Perris Valley Menifee	A101	2, 13, 21, U-10 (60), U-28 (78), U-30 (80), U-32 (82), U-36 (86), 3, 8, 10, 16, 18, 41, U-3 (53), U-34 (84), I (90)	Applicable to residential/commercial accounts for water deliveries through facilities operated by the referenced improvement districts, including Perris State Park, which are not classified as Tiered Rate accounts.
		A103	U-2 (52), U-4 (54), U-6 (56), U-15 (65)	Applicable to residential/commercial accounts for water deliveries through facilities operated by the referenced improvement districts, which are not classified as Tiered Rate accounts.
		A104	3, 8, 10, 16, 18, 41, U-3 (53), U-34 (84), I (90), 2, 13, 21, U-2 (52), U-4 (54), U-6 (56), U-10 (60), U-15 (65), U-28 (78), U-30 (80), U-32 (82), U-36 (86)	Applicable to residential/commercial accounts for water deliveries through facilities operated by the referenced improvement districts on water accounts where usage only is calculated.
		A106	2, 3, 8, 10, 13, 16, 18, 21, 41, U-2 (52), U-3 (53), U-4 (54), U-6 (56), U-10 (60), U-15 (65), U-28 (78), U-30 (80), U-32 (82), U-34 (84), U-36 (86), I (90)	Applicable to residential/commercial accounts for water deliveries through facilities operated by the referenced improvement districts on water accounts where the daily service charge only is calculated.

EASTERN MUNICIPAL WATER DISTRICT

APPENDIX A: WATER SERVICE AREA AND IMPROVEMENT DISTRICT RATE REFERENCE

Rate Type	Service Area (SA)	Rate	Improvement District (ID)	Service Area/Improvement District Information
Standard Domestic Retail	SA 42 Hemet San Jacinto	A201	1, 4, 5, 12, 42, U-7 (57), U-17 (67), U-20 (70)	Applicable to residential/commercial accounts for water deliveries through facilities operated by the referenced improvement districts, which are not classified as Tiered Rate accounts.
		A202	24, U-5 (55)	Applicable to residential/commercial accounts for water deliveries through facilities operated by the referenced improvement districts, which are not classified as Tiered Rate accounts.
		A203	1, 4, 5, 12, 42, U-7 (57), U-17 (67), U-20 (70), 24, U-5 (55)	Applicable to residential/commercial accounts for water deliveries through facilities operated by the referenced improvement districts where usage only is calculated.
		A205	1, 4, 5, 12, 24, 42, U-5 (55), U-7 (57), U-17 (67), U-20 (70)	Applicable to residential/commercial accounts for water deliveries through facilities operated by the referenced improvement districts on water accounts where the daily service charge only is calculated.
	SA 43 Murrieta	A301 A302 A303	23, 43, U-24 (74), U-26 (76)	Applicable to residential/commercial accounts for water deliveries through facilities operated by the referenced improvement districts on water accounts where usage only is calculated.

EASTERN MUNICIPAL WATER DISTRICT

APPENDIX A: WATER SERVICE AREA AND IMPROVEMENT DISTRICT RATE REFERENCE

Rate Type	Service Area (SA)	Rate	Improvement District (ID)	Service Area/Improvement District Information
Demand Retail Agricultural	SA 41 Moreno Valley Perris Valley Menifee	C101	2, 3, 8, 10, 13, 16, 18, 21, 41, U-3 (53), U-28 (78), U-30 (80), U-32 (82), U-34 (84), U-36 (86), I (90), U-10 (60)	Applicable to demand retail agricultural accounts for water deliveries through facilities operated by the referenced improvement districts.
	SA 42 Hemet San Jacinto	C201	1, 4, 5, 12, 42, U-17 (67), U-20 (70)	Applicable to demand retail agricultural accounts for water deliveries through facilities operated by the referenced improvement districts.
		C202	24, U-5 (55)	Applicable to demand retail agricultural accounts for water deliveries through facilities operated by the referenced improvement districts.
		C203	U-5 (55)	Applicable to those dairies receiving raw water per the Water Supply Agreement.
		C204		Rate for dairies using raw water above commitment per agreement.
		C205	All ID's in SA-42	Rate for non-dairies using untreated water from EM-14.

EASTERN MUNICIPAL WATER DISTRICT

APPENDIX A: WATER SERVICE AREA AND IMPROVEMENT DISTRICT RATE REFERENCE

Rate Type	Service Area (SA)	Rate	Improvement District (ID)	Service Area/Improvement District Information
Demand Retail Agricultural	SA 43 Murrieta	C301	23, 43, U-24 (74), U-26 (76)	Applicable to demand retail agricultural accounts for water deliveries through facilities operated by the referenced improvement districts.
	Agricultural Users With Domestic Rates	C401	All ID's in SA-41, SA- 42	Applicable to prior Ag user opting out of Ag program
		C402	24	
		C403	All ID's in SA-43	
Scheduled Retail Agricultural	SA 41 Moreno Valley Perris Valley Menifee	D101	3, 10, 13, 41, U-3 (53), U-7 (57), U-28 (78), U-30 (80), U-32 (82), U-36 (86)	Applicable for scheduled water deliveries through facilities operated by the referenced improvement districts.
		D102	3, 16, 18, 41, U-3 (53), U-34 (84)	
	SA 42 Hemet San Jacinto	D201	1, 4, 42, U-17 (67)	Applicable for scheduled water deliveries through facilities operated by the referenced improvement districts.
		D206	24, U-5 (55)	Applicable for scheduled water deliveries through facilities operated by the referenced improvement districts which are pressurized domestic systems.

EASTERN MUNICIPAL WATER DISTRICT

APPENDIX A: WATER SERVICE AREA AND IMPROVEMENT DISTRICT RATE REFERENCE

Rate Type	Service Area (SA)	Rate	Improvement District (ID)	Service Area/Improvement District Information
Wholesale Domestic	SA 41 Moreno Valley Perris Valley Menifee	E102	41	Applicable where Service Area 41 delivers treated water to other agencies located within Service Area 41.
		E103		Applicable to water deliveries to Western Municipal Water District (WMWD) for service to March Air Force Reserve. This charge represents operating costs only. Water delivered through EM-12A is billed directly to WMWD.
		E104		McCanna Ranch only.
		E107		Applicable to Nuevo Water Company in accordance with agreement approved on August 16, 2000.
	SA 42 Hemet San Jacinto	E201	42	Applicable to treated water deliveries to other agencies from facilities of Service Area 42 which are not classified as agency ground water use of production rights.
		E207	24,42	Applicable to the delivery of ground water (use of production rights) to the City of Hemet, City of San Jacinto, and Lake Hemet Municipal Water District through Phase I facilities pursuant to the terms of the Soboba Band of Luiseno Indians Settlement Act of 2008 and represents the O&M cost EMWD incurs to operate such facilities on behalf of the parties.
		E208		Applicable to the delivery of imported settlement water for recharge pursuant to the terms of the Soboba Band of Luiseno Indians Settlement Act of 2008 and represents the O&M cost EMWD incurs to deliver and recharge such water on behalf of the parties.

EASTERN MUNICIPAL WATER DISTRICT

APPENDIX A: WATER SERVICE AREA AND IMPROVEMENT DISTRICT RATE REFERENCE

Rate Type	Service Area (SA)	Rate	Improvement District (ID)	Service Area/Improvement District Information
Wholesale Domestic	SA 43 Murrieta	E301	43	Applicable to water deliveries for agencies located within Service Area 43.
		E302		Applicable to water deliveries to Elsinore Valley Municipal Water District (EVMWD). This charge represents operating cost only; water delivered through EM-17 is billed directly to WMWD on behalf of EVMWD.
	SA 43 Temecula	E401	43	Applicable to administration costs for water deliveries for agencies located within Service Area 43.
	General District	E500	All ID's in SA-41, SA-42, SA-43	Pass-through of the MWD Tier 2 Surcharge to wholesale agencies, when Tier 1 supply limit has been reached. Applies to imported (treated and untreated) water deliveries.

EASTERN MUNICIPAL WATER DISTRICT

APPENDIX A: WATER SERVICE AREA AND IMPROVEMENT DISTRICT RATE REFERENCE

Rate Type	Service Area (SA)	Rate	Improvement District (ID)	Service Area/Improvement District Information
Wholesale/ Agricultural /Irrigation	SA 42 Hemet San Jacinto	F205	42	Applicable to imported untreated agricultural water deliveries to other agencies within Service Area 42 and Lake Hemet Municipal Water District from EM-14 which are not settlement water deliveries.
		F206		Applicable to the delivery of settlement water from EM-14 to Grant Street Pond for groundwater replenishment by Lake Hemet Municipal Water District through the Corwin Booster.
		F207		Applicable to the delivery of ground water (use of production rights) to Lake Hemet Municipal Water District up to the Marshall Street connection. Equal to delivery rate E207 plus a Corwin/Grant Booster surcharge.
		F208		Applicable to Lake Hemet Municipal Water District use of the Raw Water Pipeline, Corwin Booster, and Grant Avenue Booster to convey water from LHMWD Well 17 to the LHMWD Flume. LHMWD pumps their own groundwater rights (ABPR) using their own well 17. Rate includes operating and repair & replacement costs.
	General District	F500	All ID's in SA-41, SA-42, SA-43	Pass-through of the MWD Tier 2 Surcharge to wholesale agencies, when Tier 1 supply limit has been reached. Applies to imported (treated and untreated) agricultural water deliveries.

EASTERN MUNICIPAL WATER DISTRICT

APPENDIX A: WATER SERVICE AREA AND IMPROVEMENT DISTRICT RATE REFERENCE

Rate Type	Service Area (SA)	Rate	Improvement District (ID)	Service Area/Improvement District Information
Construction Meters	General District	AT00 AT01	All Non-IDs	Applicable to construction water deliveries through temporary meters from facilities that do not lie in any Improvement District
	SA 41 Moreno Valley Perris Valley Menifee	AT11	2, 13, 21, U-10 (60), U-2 (52), U-4 (54), U-6 (56), U-15 (65), U-28 (78), U-30 (80), U-32 (82), U-36 (86), 3, 8, 10, 16, 18, 41, U-3 (53), U-34 (84), I (90)	Applicable to construction water deliveries through temporary meters from facilities of the referenced Improvement District
	SA 42 Hemet San Jacinto	AT21	1, 4, 5, 12, 42, U-7 (57), U-17 (67), U-20 (70), 24, U-5(55)	Applicable to construction water deliveries through temporary meters from facilities of the referenced Improvement District
		AT23		Applicable to raw water deliveries through temporary meters at specified locations in Service Area 42 as served from EM-14.
	SA 43 Murrieta	AT31	23, 43, U-24 (74), U-26 (76)	Applicable to construction water deliveries through temporary meters from facilities of the referenced Improvement District

EASTERN MUNICIPAL WATER DISTRICT

APPENDIX A: WATER SERVICE AREA AND IMPROVEMENT DISTRICT RATE REFERENCE

Rate Type	Service Area (SA)	Rate	Improvement District (ID)	Service Area/Improvement District Information
Residential Temporary Meter	SA 41 Moreno Valley Perris Valley Menifee	AT12	2, 13, 21, U-10 (60), U-2 (52), U-4 (54), U-6 (56), U-15 (65), U-28 (78), U-30 (80), U-32 (82), U-36 (86), 3, 8, 10, 16, 18, 41, U-3 (53), U-34 (84), I (90)	Applicable to residential supplemental water deliveries through temporary meters from facilities of the referenced Improvement District
	SA 42 Hemet San Jacinto	AT22	1, 4, 5, 12, 42, U-7 (57), U-17 (67), U-20 (70), 24, U-5 (55)	Applicable to residential supplemental water deliveries through temporary meters from facilities of the referenced Improvement District
	SA 43 Murrieta	AT32	23, 43, U-24 (74), U-26 (76)	Applicable to residential supplemental water deliveries through temporary meters from facilities of the referenced Improvement District

EASTERN MUNICIPAL WATER DISTRICT

APPENDIX B: SEWER SERVICE AREA AND IMPROVEMENT DISTRICT RATE REFERENCE

Service Area (SA)	Rate	Improvement District (ID)	Service Area/Improvement District Information
SA 31 Hemet, San Jacinto	S101	17, 20, U-7 (57), U-12 (62), U-14 (64), U-16 (66), U-18 (68), U-19 (69), U-21 (71)	Applicable for sewage collection, transmission, treatment and disposal service rendered through EMWD facilities when no other agency/assignee provides sewage collection.
	S102	17, 20, U-7 (57), U-12 (62), U-14 (64), U-16 (66), U-19 (69), U-21 (71)	Applicable for sewage, transmission, treatment and disposal service rendered through facilities of EMWD when another agency or assignee provides sewage collection. In areas where EMWD provides water service and renders billing statements, the other agency's sewage collection charge may be billed (by an agency agreement) by EMWD for the involved other agency as a separate item in addition to the EMWD EDU charge. This rate is also applicable to the City of Hemet, San Jacinto and Lake Hemet Municipal Water District, who render billing on behalf of EMWD (by an agency agreement), where its respective agency provides sewer collection.
SA 32 Moreno Valley	S201	19, U-13 (63), U-22 (72)	Applicable for sewage collection, transmission, treatment and disposal service rendered through EMWD facilities. This schedule also applies to areas served domestic water by Moreno Valley Water District who renders billing (by an agency agreement) on behalf of EMWD.

EASTERN MUNICIPAL WATER DISTRICT

APPENDIX B: SEWER SERVICE AREA AND IMPROVEMENT DISTRICT RATE REFERENCE

Service Area (SA)	Rate	Improvement District (ID)	Service Area/Improvement District Information
SA 33 Sun City, Menifee	S301	U-1 (51), U-2 (52), 88	Applicable for sewage collection, transmission, treatment, and disposal service rendered through EMWD facilities when no other agency/ assignee provides sewage collection. Applicable for sewer collection, transmission, treatment, and disposal service rendered within the Menifee Valley Sewer Service Area No. 1.
	S302	U-4 (54), U-6 (56), U-15 (65), U-35 (85)	Applicable for sewage collection, transmission, treatment, and disposal service rendered through EMWD facilities and where General Obligation Bonds have been issued to support the I.D. 97 (Perris Valley RWRf Improvements).
SA 34 Temecula, Murrieta	S401	22, U-8 (58), 25, U-23 (73), U-25 (75), RCWD	Applicable for sewage collection, transmission, treatment, and disposal service rendered through the respective EMWD facilities. This rate is also applicable to Rancho California Water District for accounts billed on behalf of EMWD (by an agency agreement) which lie within the boundaries of I.D. U-8 (58).
	S403	MCWD (WMWD)	Applicable for sewage collection, transmission, treatment, and disposal service rendered through Murrieta Sewer Facilities located within the boundaries of Murrieta County Water District pursuant to an agreement dated March 21, 1989, between EMWD and MCWD.

EASTERN MUNICIPAL WATER DISTRICT

APPENDIX B: SEWER SERVICE AREA AND IMPROVEMENT DISTRICT RATE REFERENCE

Service Area (SA)	Rate	Improvement District (ID)	Service Area/Improvement District Information
SA 35 Perris Valley	S501	E (97)	Applicable for sewage collection, transmission, treatment and disposal service rendered through EMWD facilities when no other improvement district or no other agency/assignee provides sewage collection.
	S502		Applicable for sewage transmission, treatment and disposal service rendered through EMWD facilities when another agency or assignee provides sewage collection. In areas where EMWD provides water service and renders billing statements, the other agency sewage collection charge may be billed (by an interagency agreement) by EMWD for the involved other agency as a separate item in addition to the EMWD EDU charge. This rate is also applicable to the City of Perris which renders billing on behalf of EMWD (by an agency agreement).
	S505		Applicable for domestic sewage collected from Val Verde Unified School District which is conveyed to and treated by Western Municipal Water District (WMWD) per interagency agreement dated December 21, 2012, at the rate established by WMWD.
	S503	U-27 (77), U-29 (79), U-31 (81), U-33 (83), F (93), G (94)	Applicable for sewage collection, transmission, treatment and disposal service rendered through EMWD facilities of I.D. U-29(79) (West Perris Area), F (93) (Romoland Assessment District #5), I.D. G (94) (Homeland Assessment District #7), 81 (North Sun City Area), 83 (Mead Valley Area), U-27(77) (North Perris Area).
	S504	U-9 (59)	Applicable for sewage collection, transmission, treatment and disposal service rendered through facilities of I.D. U-9 (59) (Perris Valley), and where General Obligation Bonds have been issued to support the EMWD Perris Valley RWRf Improvements.
	S601	U-10 (60)	Applicable for single family residential sewer service rendered through facilities of Elsinore Valley Municipal Water District per agency agreement dated November 4, 1968. No commercial or other service types within this service area, at the rate established by EVMWD

CONSOLIDATED SCHEDULE OF
**RATES, FEES,
AND CHARGES**



EASTERN MUNICIPAL WATER DISTRICT
2270 TRUMBLE ROAD PERRIS, CA 92570

951.928.3777
WWW.EMWD.ORG