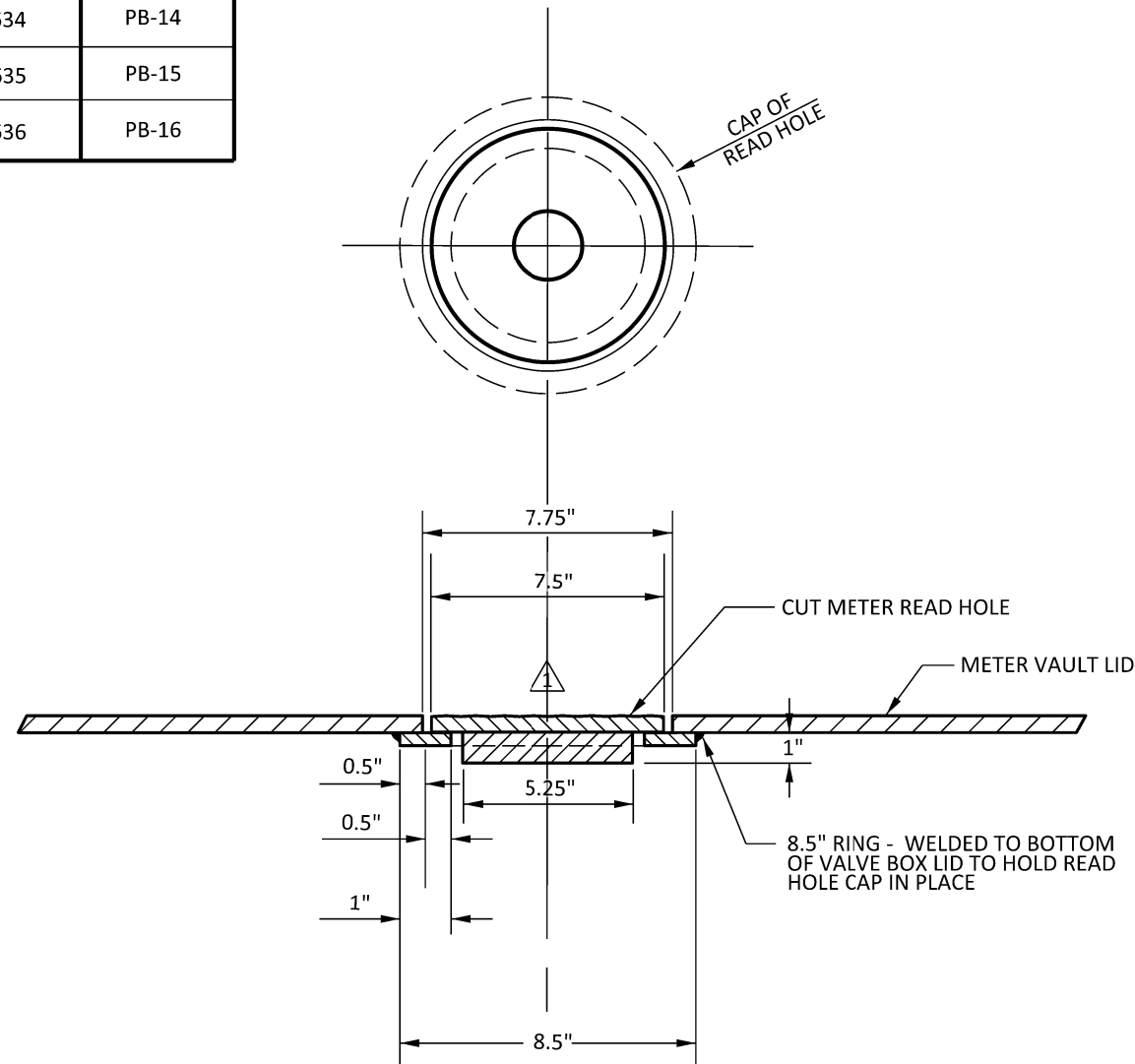
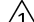



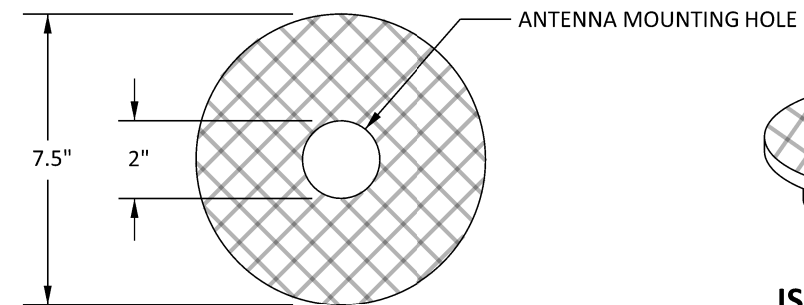
**EMWD STANDARD DRAWING
METER REFERENCE TABLE** 

| SIZE | ITEM | POTABLE STD DRAWING # | RECYCLED STD DRAWING # |
|------|-------|-----------------------|------------------------|
| 3" | METER | B-633 | PB-13 |
| 4" | METER | B-634 | PB-14 |
| 6" | METER | B-635 | PB-15 |
| 8" | METER | B-636 | PB-16 |

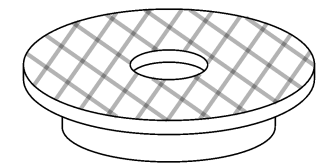


NOTES:

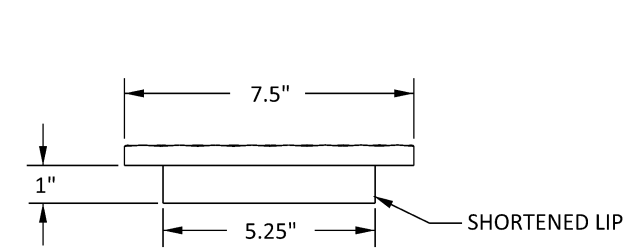
-  1. READ HOLE(S) SHALL BE POSITIONED OVER METER REGISTER(S) AFTER METER INSTALLATION. IF READ HOLE ALIGNS WITH CENTER SEAM OF DOUBLE VAULT LIDS, OFFSET READ HOLE AND INSTALL WITHIN UPPER MOST LID.
2. VAULT LIDS SHALL BE PRIMED AND PAINTED EMWD APPROVED TAN.
3. ALL MATERIALS SHALL BE PER EMWD APPROVED MATERIAL LIST.
-  4. READ HOLE CAP SHALL BE A VALVE BOX CAP, MACHINED TO ACCOMMODATE AMI ANTENNA.



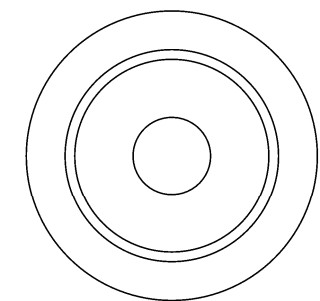
TOP VIEW



ISOMETRIC VIEW

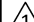



SIDE VIEW



BOTTOM VIEW


METER READ HOLE CAP

| REVISIONS | | | | APPROVALS | | | EASTERN MUNICIPAL WATER DISTRICT STANDARD DRAWING | |
|--|---------|---------|--|--------------|---------|--------------|--|---|
| NO. | DATE | INITIAL | DESCRIPTION | APP'D | DATE | INITIAL | DATE | READ HOLE FOR METER VAULTS |
| | | | | | | DESIGN | <i>SMM</i> 5/7/12 | |
| | | | | | | CONSTRUCTION | <i>MEL</i> 5/8/12 | |
| | | | | | | INSPECTION | <i>JEW</i> 5/8/12 | |
| | | | | | | OPERATIONS | <i>KG</i> 5/8/12 | |
| | | | | | | SUBMITTED | | |
|  | 9/15/20 | GS | UPDATED TITLE BLOCK, LOGO, FONT, PAGE LAYOUT, NOTE 1 AND METER TABLE, ADDED CAP DETAILS AND NOTE 4 | <i>AGA</i> | 9/15/20 | RECOMMENDED | <i>Joe Mouawad</i> 5/21/12 DIRECTOR OF ENGINEERING DATE | APPROVED <i>Charlie Bachmann</i> 5/22/12 ASSISTANT GENERAL MANAGER DATE |
| REFERENCES: SUPERCEDES A-496 | | | | SCALE: NONE | | | | B-976  |
| FILE I.D.: \kauai\eng\std dwgs\B-976.dgn | | | | DRAWN BY: GS | | | | |