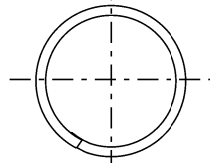
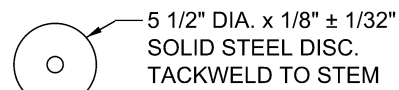


AXONOMETRIC VIEW

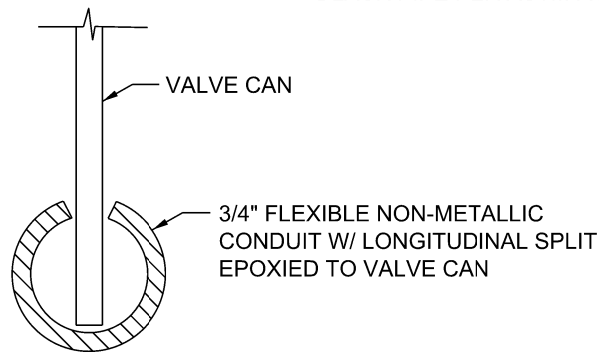


TOP VIEW
LENGTH: 12" OR 24"
AS REQUIRED

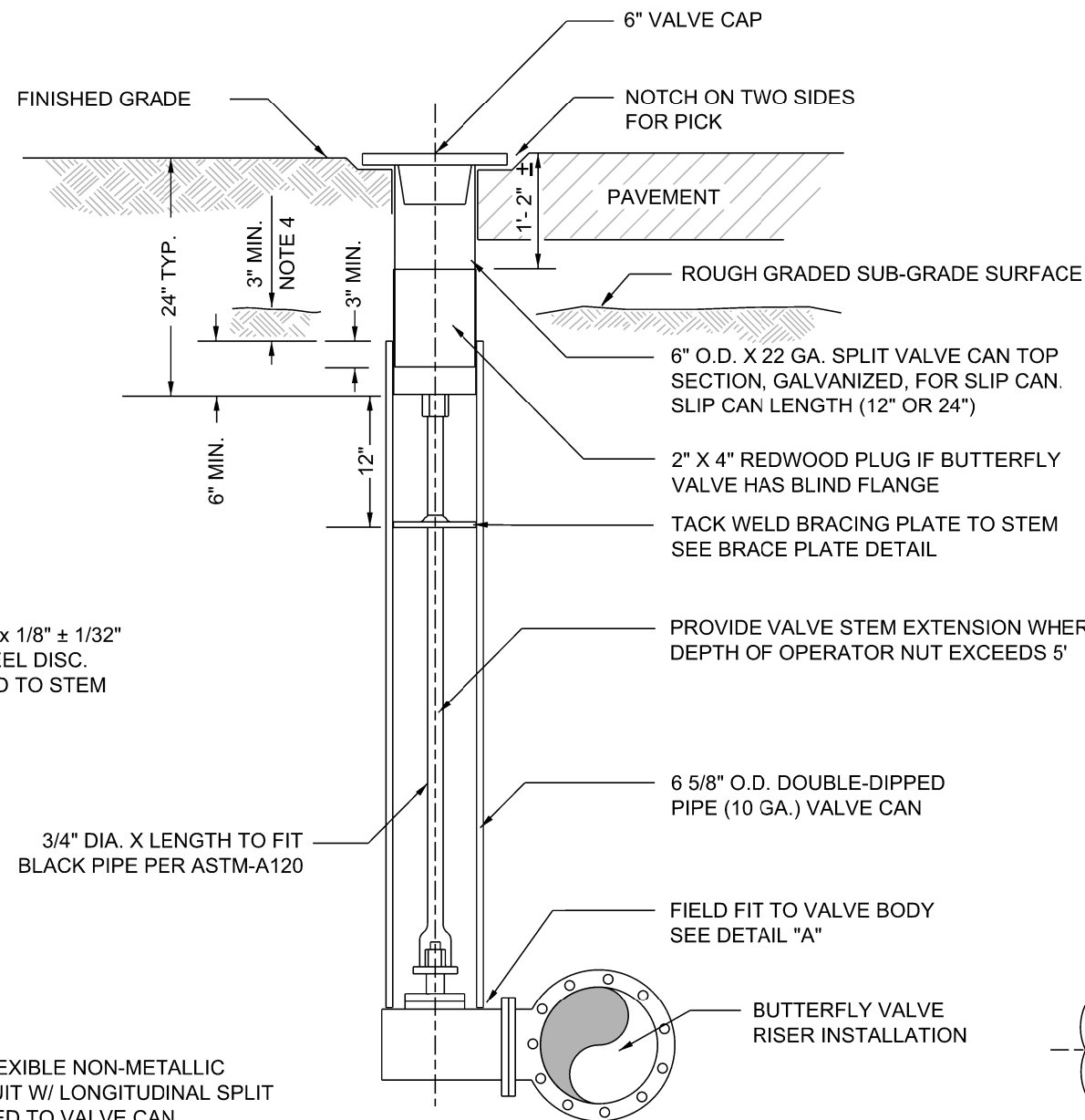
SLIP CAN DETAIL



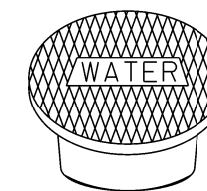
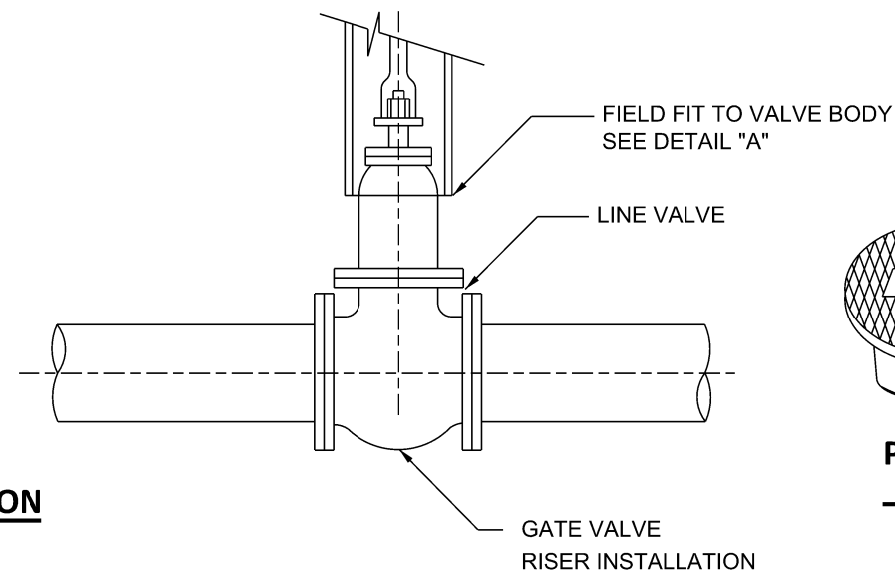
**BRACING
PLATE DETAIL**



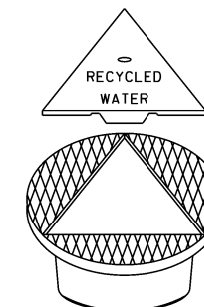
DETAIL "A"



STANDARD INSTALLATION



**POTABLE
WATER**



**RECYCLED
WATER**

BROOKS 4-TT OR APPROVED EQUAL

NOTES:

1. CONTRACTOR SHALL RAISE SLIP CAN TO GRADE AFTER STREET IS PAVED, WHERE PAVING IS PROPOSED.
2. IN UNPAVED AREAS, CONTRACTOR SHALL LEAVE CAP AND SLIP CAN 18" BELOW FINISH GRADE. (I.E. GRADED SHOULDERS).
3. IN NEW SUBDIVISIONS WHERE IT IS SPECIFICALLY GIVEN TO OTHERS (AS SPECIFIED) TO RAISE CAP AND CAN TO FINISH GRADE UPON COMPLETION OF PAVING. WATER CONTRACTOR SHALL FURNISH STEM EXTENSION, SLIP CAN AND CAP TO DISTRICT STORAGE YARD, AND LEAVE VALVE CANS PROPERLY COVERED WITH 2"x8"x8" REDWOOD PLATE.
4. SET TOP OF TRAFFIC COVER SUFFICIENTLY BELOW ROUGH GRADED SUB-GRADE TO AVOID DAMAGE DURING FINE GRADING AND SCARIFYING OPERATION.
5. DOMESTIC WATER INSTALLATION: VALVE CAP TO BE PAINTED SAFETY PRECAUTION BLUE ENAMEL AND PRIMER, AS APPROVED, AND MARKED "WATER". RECYCLED WATER INSTALLATIONS: VALVE CAP LID TO BE PAINTED PURPLE AND MARKED "RECYCLED".

REVISIONS				APPROVALS		
NO.	DATE	INITIAL	DESCRIPTION	APP'D	DATE	DATE
						DESIGN
						CONSTRUCTION <i>MJ</i> 11/10/14
						INSPECTION <i>CD</i> 11/30/14
						OPERATIONS <i>KG</i> 10/30/14
						SUBMITTED <i>AGA</i> 10/30/14
△	5/3/19	GS	RESTORED ORIGINAL TRIANGULAR CAP, UPDATED TITLE BLOCK, FONT AND LOGO	<i>AGA</i>	5/3/19	



EASTERN MUNICIPAL WATER DISTRICT
STANDARD DRAWING

VALVE CAP & RISER DETAIL

REFERENCES: SUPERCEDES A-492 & PA-2
FILE I.D.: \kauai\eng\std dwgs\B-668.dgn

SCALE: NONE
DRAWN BY: GS

RECOMMENDED *Joe Mouawad* 11/10/2014
DIRECTOR OF ENGINEERING DATE

APPROVED *Charlie Bachmann* 11/12/2014
ASSISTANT GENERAL MANAGER DATE

B-668

