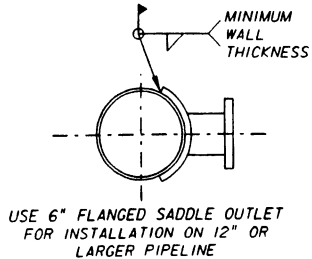


USE EMWD APPROVED HYDRANT
(6" x 2-2 1/2" x 1 - 4")
(SEE LEFT FOR OUTLET
ORIENTATION)

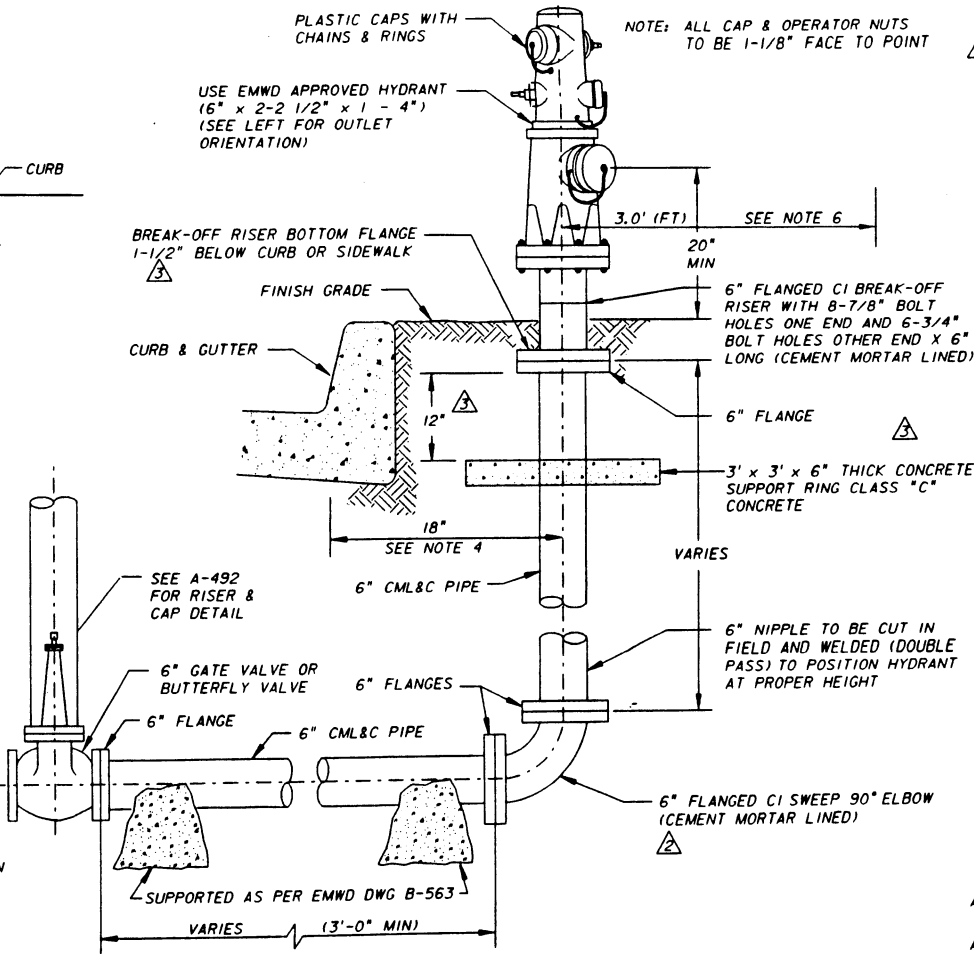
BREAK-OFF RISER BOTTOM FLANGE
1-1/2" BELOW CURB OR SIDEWALK

FINISH GRADE
CURB & GUTTER



USE CAST IRON TEE FOR INSTALLATION
ON 6" OR 8" PIPELINE

PIPELINE INSTALLATION



FIRE HYDRANT ASSEMBLY

NOTE: ALL CAP & OPERATOR NUTS
TO BE 1-1/8" FACE TO POINT

GENERAL NOTES

1. PAINTS:
FIRE HYDRANTS TO BE PAINTED WITH REFLECTIVE SCOTCHLITE S-368 OR S-370 OR APPROVED EQUAL.
HYDRANT TOPS AND NOZZLE CAPS, 1500 GPM OR GREATER TO BE LIGHT BLUE.
HYDRANT TOPS AND NOZZLE CAPS, 1000 GPM TO 1499 GPM TO BE GREEN.
HYDRANT TOPS AND NOZZLE CAPS, 500 GPM TO 999 GPM TO BE ORANGE.
HYDRANT TOPS AND NOZZLE CAPS, LESS THAN 500 GPM TO BE RED.
CONTRACTOR MAY LEAVE FIRE HYDRANT STANDARD PRIME COATED AND MAKE FINANCIAL ARRANGEMENTS FOR THE CITY TO FINISH COAT WITH SPECIAL PAINT AND TO SET REFLECTIVE MARKERS.
2. ALL FLANGES SHALL BE FULL WELDED (DOUBLE PASS) AND COATED IN THE FIELD AS DIRECTED BY ENGINEER PER NOTE 5.
3. ALTERNATE MATERIALS MAY BE USED WHEN SPECIFIED.
4. FIRE HYDRANT LOCATIONS:
A. FIRE HYDRANT SHALL BE PLACED:
1. 1'-6" BEHIND CURB FACE WHEN WIDTH OF SIDEWALK IS 8' OR WIDER.
2. 7'-6" BEHIND CURB FACE WHEN WIDTH OF SIDEWALK IS 6' WIDE.
3. 7'-6" BEHIND CURB FACE WHEN THERE IS NO SIDEWALK.
4. 1'-6" WITHIN ROAD RIGHT-OF-WAY WHEN NO CURBS OR SIDEWALKS ARE PROPOSED.
B. FIRE HYDRANT TO BE 1' BACK FROM INTERSECTION OF SIDEWALK WITH CORNER APRON.
C. AT OTHER THAN STREET INTERSECTIONS FIRE HYDRANTS TO BE ON LOT LINES.
5. FIELD COATING FOR EXPOSED PIPE SHALL BE PER EMWD SPECIFICATIONS AND APPROVED MATERIALS.
6. A MINIMUM OF 3 FT CLEAR SPACE SHALL BE MAINTAINED AROUND THE CIRCUMFERENCE OF THE FIRE HYDRANT.

APPROVED: Bob Wilson DATE: 5/14/93

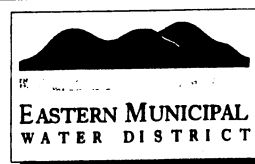
APPROVED: Brian McNabb DATE: 5/14/93

CITY OF SAN JACINTO

EASTERN MUNICIPAL WATER DISTRICT
STANDARD DRAWING

6" x 2-2 1/2" x 1-4" FIRE HYDRANT
INSTALLATION-STEEL
CITY OF SAN JACINTO

REVISIONS				APPROVALS			
NO.	DATE	INITIAL	DESCRIPTION	APP'D	DATE	INITIAL	DATE
4/1/93			REDRAWN BY CADD ON MYLAR	VJB	7/2/93		
10/27/94		KER	REVISED ELBOW CALLOUT	VJB	10/27/94		
5/17/00		GR	REVISED NOTES 1,4, CALLOUT & ALL FONT	VJB	5/19/00		
						PR	5/18/93
						VJB	5/19/93



REFERENCES: ORIG DRAWN 7/88 SCALE: NONE RECOMMENDED Joseph D. Van Sickle 6/19/93 APPROVED C. Hooite Rugge 7/2/93 B-651/A
FILE I.D.: D_STANDARDS/B651.DGN DRAWN BY _____ DIRECTOR OF ENGINEERING DATE _____ CHIEF ENGINEER DATE _____