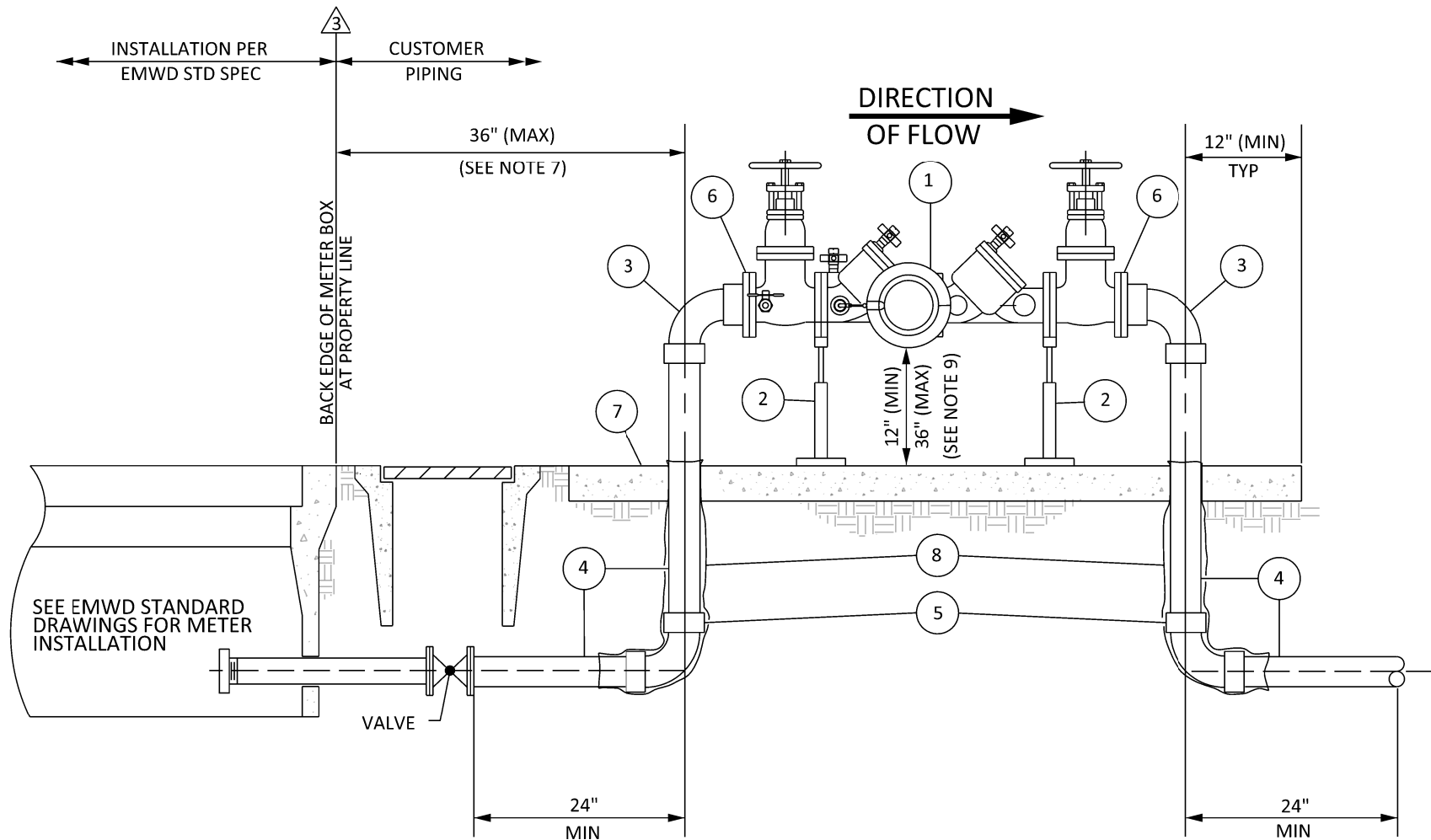


NOTES:

1. PROVIDE AN USC APPROVED BACKFLOW PREVENTION ASSEMBLY AS DESIGNATED BY EMWD APPROVED MATERIALS LIST SPECIFICATIONS.
2. EMWD MAINTENANCE RESPONSIBILITY STOPS AT THE METER. THE CUSTOMER IS RESPONSIBLE TO TEST AND MAINTAIN THE BACKFLOW PREVENTION ASSEMBLY, IN ACCORDANCE WITH EMWD ORD. 69.
3. ONLY RIVERSIDE COUNTY CERTIFIED BACKFLOW TESTERS LISTED ON THE EMWD APPROVED BACKFLOW TESTER LIST ARE ALLOWED TO TEST BACKFLOW ASSEMBLIES WITHIN EMWD SERVICE AREA.
4. BACKFLOW CERTIFICATION TESTING IS REQUIRED ANNUALLY AT A MINIMUM BUT MAY BE MORE FREQUENT AS DEEMED NECESSARY BY EMWD. CERTIFICATION TESTING IS REQUIRED IMMEDIATELY AFTER AN ASSEMBLY IS RELOCATED, REPLACED, REPAIRED, NEW INSTALLATION ACCEPTANCE AND WATER DELIVERY PER EMWD ORD. 69 PRIOR TO NEW INSTALLATION ACCEPTANCE AND WATER DELIVERY.
5. BACKFLOW PREVENTION ASSEMBLY SIZE SHALL MATCH THE DIAMETER OF THE METER IN ACCORDANCE WITH THE UNIFORM PLUMBING CODE; CHAPTER 6, SECTION 610 AS AMENDED, PER TABLE "A", OR AS APPROVED BY EMWD. ⚠
6. BACKFLOW PREVENTION ASSEMBLY INSTALLATIONS INCLUDING ALL APPURTENANCES FOR THE SUPPLY OF DOMESTIC WATER SHALL COMPLY WITH THE REQUIREMENTS OF THE CALIFORNIA LEAD-FREE ACT AB1953.
7. BACKFLOW PREVENTION ASSEMBLIES SHALL BE LOCATED AS CLOSE AS PRACTICAL TO THE WATER METER BOX BUT NOT FURTHER THAN 3 FEET UNLESS A VARIANCE IS OBTAINED FROM AN EMWD CROSS-CONNECTION SPECIALIST PRIOR TO INSTALLATION.
8. NO OUTLETS, TEES, OR CONNECTIONS SHALL BE ALLOWED BETWEEN THE METER AND THE BACKFLOW PREVENTION ASSEMBLY.
9. BACKFLOW PREVENTION ASSEMBLIES SHALL MAINTAIN A VERTICAL CLEARANCE FROM THE LOWEST POINT OF 12 INCHES (MINIMUM) TO 36 INCHES (MAXIMUM) ABOVE FINISHED GRADE, WITH SIDE AND TOP CLEARANCES OF 12 INCHES (MINIMUM) FROM ANY OBSTRUCTIONS IN ALL DIRECTIONS.
10. POLYETHYLENE ENCASMENT SHALL BE INSTALLED PER ANSI/AWWA C105/A21.5 REQUIREMENTS. HIGH-DENSITY POLYETHYLENE (HDCLPE) SHALL BE A MINIMUM OF .004 (4 MIL) THICKNESS. LOW-DENSITY POLYETHYLENE (LLDPE) SHALL BE A MINIMUM OF .008 (8 MIL) THICKNESS.



RECOMMENDATIONS:

11. PARALLEL INSTALLATIONS OF THE SAME TYPE OF BACKFLOW PREVENTION ASSEMBLIES ARE STRONGLY RECOMMENDED FOR ALL FACILITIES REQUIRING UNINTERRUPTED WATER SUPPLY, SUCH AS, HOSPITALS AND SCHOOLS.
12. FREEZE PROTECTION IS RECOMMENDED, BUT THE RELIEF VALVE MUST BE ABLE TO VENT FREELY AND TESTCOCK OPENINGS SHALL BE LEFT EXPOSED.
13. THEFT PREVENTION DEVICES ARE STRONGLY RECOMMENDED FOR BRONZE ASSEMBLIES ALLOWING ADEQUATE ACCESS TO THE ASSEMBLY FOR TESTING, MAINTENANCE, AND PROPER DRAINAGE.

TABLE "A" ⚠ ⚠

METER SIZE	BACKFLOW SIZE
2" SENSUS C2 (160 GPM)	2½"
2" SENSUS T2 (200 GPM)	3"

ITEM	DESCRIPTION
1	2-1/2" AND 3" REDUCED PRESSURE BACKFLOW PREVENTER ASSEMBLY WITH VALVES
2	ADJUSTABLE PIPE SUPPORT
3	COPPER 90° ELBOW, CLOSE ROUGH, SLIP JT x SOLDER JT
4	COPPER WATER TUBE, TYPE L, HARD
5	COPPER 90° ELBOW, CLOSE ROUGH, SOLDER JOINTS
6	CL 150 CAST BRZ COMPANION FLANGE WITH THD SOLDER JOINT END
7	24" WIDE x 4" THICK CONCRETE PAD, LENGTH VARIES PER BACKFLOW SIZE
8	POLYETHYLENE ENCASMENT (SEE NOTE 10)

REVISIONS						APPROVALS			EASTERN MUNICIPAL WATER DISTRICT		EASTERN MUNICIPAL WATER DISTRICT STANDARD DRAWING	
NO.	DATE	INITIAL	DESCRIPTION	APP'D	DATE		INITIAL	DATE			REDUCED PRESSURE BACKFLOW PREVENTER ASSY FOR SIZES 2½" THROUGH 3"	
						DESIGN	VJB	5/12/11	<div style="display: flex; justify-content: space-between; align-items: center;"> <div style="text-align: center;"> emwd EASTERN MUNICIPAL WATER DISTRICT </div> <div style="text-align: center;"> RECOMMENDED <i>Joe Mouawad</i> DIRECTOR OF ENGINEERING </div> <div style="text-align: center;"> 6/21/11 DATE </div> </div>		APPROVED <i>Charlie Bachmann</i> ASSISTANT GENERAL MANAGER	
					CONSTRUCTION	MLJ	5/23/11					
⚠	9/15/20	GS	UPDATED TITLE BLOCK, FONT, LOGO, DELINEATION CALLOUT	AGA	9/15/20	INSPECTION	JEW	6/14/11				
⚠	12-30-15	GS	REVISED TABLE "A" METER TYPE AND DATA	AGA	12/30/15	OPERATIONS	KG	5/18/11				
⚠	3-5-14	GS	REVISED NOTE #5 AND ADDED TABLE "A"	AGA	3/5/14	SUBMITTED	SMM	5/12/11				
REFERENCES:				SCALE: NONE		RECOMMENDED <i>Joe Mouawad</i> DIRECTOR OF ENGINEERING			APPROVED <i>Charlie Bachmann</i> ASSISTANT GENERAL MANAGER		B-597B	
FILE I.D.: \kauai\eng\std dwgs\B-597B.dgn				DRAWN BY: GS								6/21/11 DATE