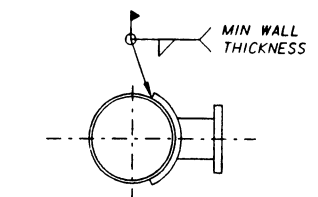
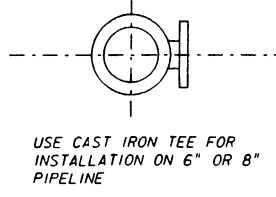


OUTLET ORIENTATION



USE 6" FLANGED SADDLE OUTLET FOR INSTALLATION ON 12" OR LARGER PIPELINE

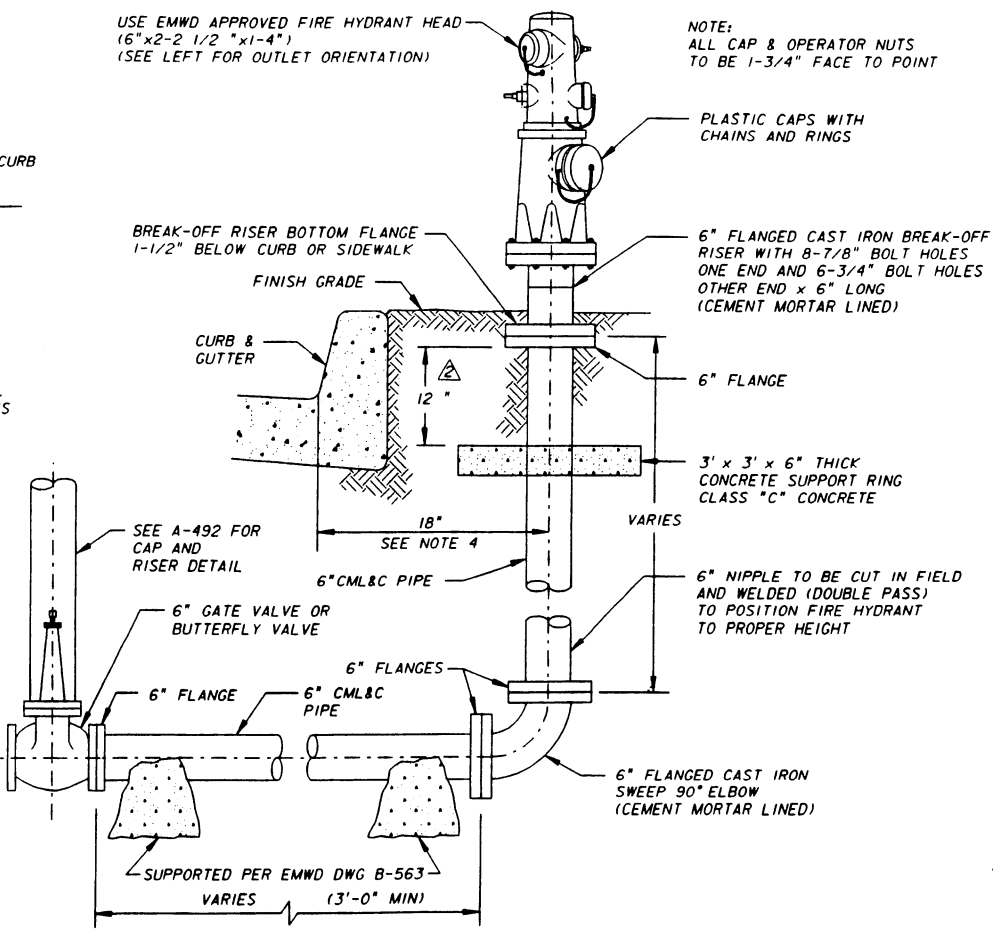


USE CAST IRON TEE FOR INSTALLATION ON 6" OR 8" PIPELINE

PIPELINE INSTALLATION

USE EMWD APPROVED FIRE HYDRANT HEAD (6" x 2-2 1/2" x 1-4") (SEE LEFT FOR OUTLET ORIENTATION)

NOTE: ALL CAP & OPERATOR NUTS TO BE 1-3/4" FACE TO POINT



FIRE HYDRANT ASSEMBLY

GENERAL NOTES

1. FIRE HYDRANT TO BE PAINTED WITH REFLECTIVE SCOTCHLITE S-368, S-370, OR APPROVED EQUAL.
2. ALL FLANGES SHALL BE FULL WELDED (DOUBLE PASS) AND COATED IN THE FIELD AS DIRECTED BY THE ENGINEER PER NOTE 6.
3. ALTERNATE MATERIALS MAY BE USED WHEN SPECIFIED.
4. FIRE HYDRANT PLACEMENT:
 - A. CURB AND SIDEWALK SEPARATED: FIRE HYDRANT TO BE 18" BEHIND CURB FACE, AS SHOWN.
 - B. CURB AND SIDEWALK ADJACENT: FIRE HYDRANT TO BE 18" BEHIND SIDEWALK BUT NOT LESS THAN 8" WITHIN THE ROAD RIGHT-OF-WAY.
 - C. SIDEWALK FULL WIDTH OF RIGHT-OF-WAY: FIRE HYDRANT TO BE 18" BEHIND CURB.
 - D. NO CURBS OR SIDEWALKS PROPOSED: FIRE HYDRANT TO BE 18" WITHIN THE ROAD RIGHT-OF-WAY.
5. FIRE HYDRANT LOCATION:
 - A. STREET INTERSECTIONS: FIRE HYDRANT TO BE 5' PAST THE CURB RETURN.
 - B. OTHER THAN STREET INTERSECTIONS: FIRE HYDRANT TO BE ON A LOT LINE AS SHOWN ON PLANS.
6. ALL BURIED BARE METAL SHALL BE FIELD COATED PER EMWD SPECIFICATIONS AND APPROVED MATERIALS.
7. ALL FIRE HYDRANTS TO HAVE "BLUE DOT" MARKER PER CITY OF HEMET STD W-700A ("STD").

APPROVED: Bernard Phillips DATE: 5/5/93

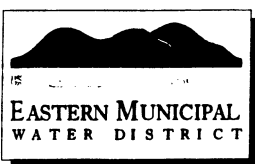
CITY OF HEMET

SUPER FIRE HYDRANT

EASTERN MUNICIPAL WATER DISTRICT
STANDARD DRAWING

**6" x 2-2 1/2" x 1-4" FIRE HYDRANT
INSTALLATION
CITY OF HEMET - STEEL PIPE**

REVISIONS				APPROVALS			
NO.	DATE	INITIAL	DESCRIPTION	APP'D	DATE	INITIAL	DATE
1	4/8/93		REDRAWN W/CADD ON MYLAR	VJB	7/93		
2	5/17/00	GR	REV ALL FONT, ADD CONC SUPPORT & DIM	VJB	5/19/00		



REFERENCES: ORIG DRAWN BY JMA 11/77
FILE I.D.: D.STANDARDS/B567.DGN

SCALE: NONE
DRAWN BY

RECOMMENDED Joseph D. Van Sickle 6/3/93
DIRECTOR OF ENGINEERING DATE

APPROVED G. Hoops Ruggs 7/2/93
CHIEF ENGINEER DATE

B-567