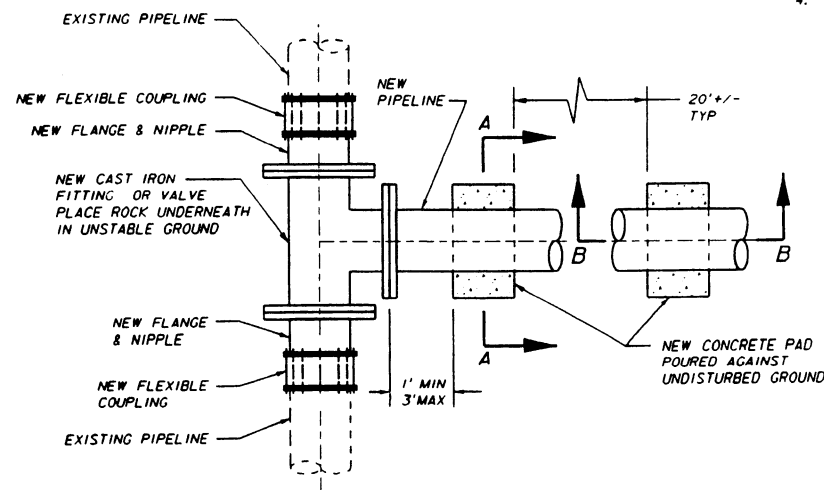
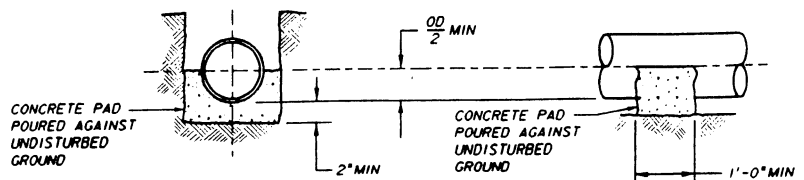


NEW STEEL PIPELINE INSTALLATION



CONNECTION TO EXISTING STEEL PIPELINE



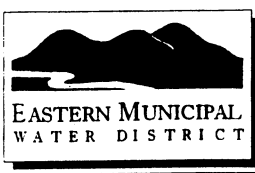
SECTION A-A

SECTION B-B

**NOTES**

1. CLASS "C" CONCRETE PAD TO BE POURED AGAINST UNDISTURBED TRENCH WALL AFTER PIPE IS INSTALLED & FLANGE CONNECTION IS MADE TO CI FITTING OR VALVE.
2. PAD SHALL BE POURED TO AVOID INTERFERENCE WITH CONNECTIONS OR SPECIAL FITTINGS.
3. VALVES 12" & SMALLER SHALL BE SUPPORTED AS SHOWN HEREON. REFER TO DWGS B-255 & DWG B-279 FOR ADDITIONAL SUPPORTS FOR VALVES 14" & LARGER.
4. WHERE VALVES ARE CALLED OUT ON CONSTRUCTION DRAWINGS BOLT VALVES TO CI FITTINGS & THEN PROCEED WITH SUPPORT ASSEMBLY AS SHOWN.

REVISIONS				APPROVALS			
NO.	DATE	INITIAL	DESCRIPTION	APP'D	DATE	INITIAL	DATE
1	11/18/98	GR	REDRAWN W/CADD ON MYLAR	WJB	4/27/99	JUS	
						BKM	
						CAG	
						LAM	3/18/77



EASTERN MUNICIPAL WATER DISTRICT  
STANDARD DRAWING

**STEEL PIPELINE PIPE PAD OR  
COUPLING FOR CAST IRON FITTINGS**

REFERENCES: FILE I.D.: d\_standards: b563.dgn  
SCALE: NONE  
DRAWN BY: MCA

RECOMMENDED  
DIRECTOR OF ENGINEERING \_\_\_\_\_ DATE \_\_\_\_\_

APPROVED Doyle J. Boen 3/18/77 **B-563**  
GENERAL MANAGER & CHIEF ENGINEER DATE