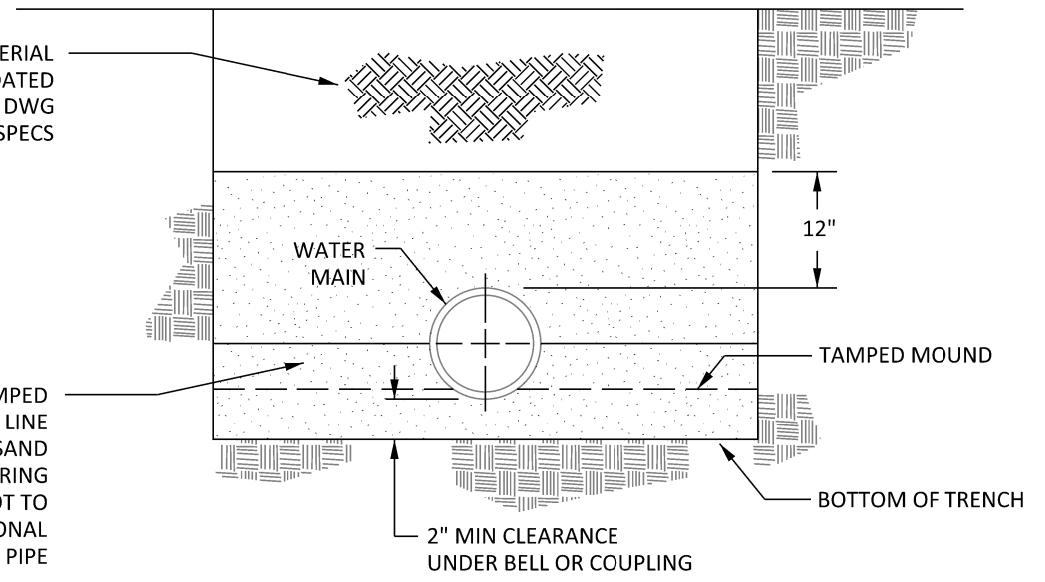
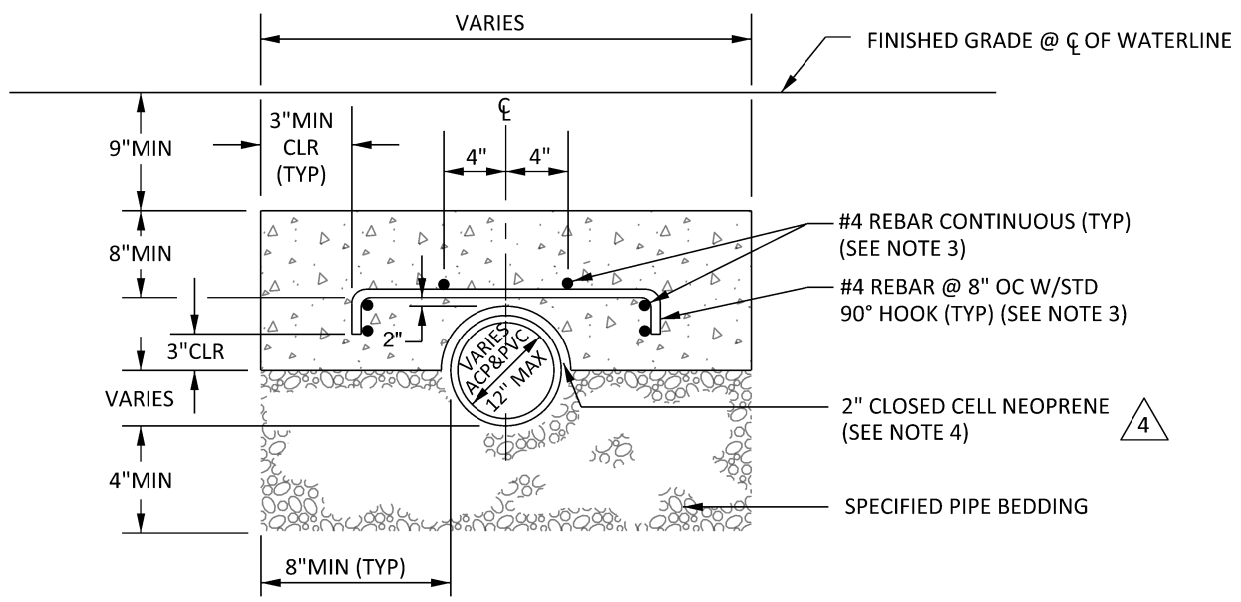


**PLAN VIEW
TYPICAL PIPE INSTALLATION**

SELECT BACKFILL MATERIAL
COMPACTED OR CONSOLIDATED
IN ACCORDANCE WITH STD DWG
B-286B AND SPECS



TYPICAL TRENCH SECTION



CONCRETE CAP DETAIL

NOTES:

PIPE ZONE BACKFILL

1. THE BACKFILL MATERIAL IN THE PIPE ZONE MAY CONSIST OF MATERIAL FROM THE EXCAVATION WHERE THAT MATERIAL IS A UNIFORMLY GRADED SUITABLE SOIL FREE FROM STONES OR LUMPS EXCEEDING 3/4" IN GREATEST DIMENSION, VEGETABLE MATTER OR OTHER UNSATISFACTORY MATERIAL, AS APPROVED BY THE ENGINEER, AND COMPACTED TO A RELATIVE COMPACTION AS RECOMMENDED BY THE MANUFACTURER OF THE PIPE.


2. FOR RECYCLED WATER PIPELINES, PLACE 3" WIDE LOCATOR TAPE ABOVE PIPE. LETTERING SHALL BE (2") TWO INCHES TALL WITH THE WORDS "CAUTION RECYCLED WATER". THE COLOR OF THE TAPE SHALL BE PURPLE-PANTONE 512C.

PIPELINE COLOR

- 3. POTABLE WATER PIPELINES TO BE BLUE IN COLOR.
- 4. RECYCLED WATER PIPELINES TO BE PURPLE IN COLOR.

CONCRETE CAP (FOR SHALLOW WATERLINE WHEN APPROVED BY ENGINEER)

- 5. CAP SHALL BE OF CLASS "A" CONCRETE.
- 6. REBAR SHALL HAVE A YIELD STRENGTH OF 60 KSI.
- 7. CLOSED CELL NEOPRENE PER ASTM D-1056, D-1667a & D-412;
 - COMPRESSION RESISTANCE = 5-13 PSI
 - 50% COMPRESSION SET = 25%
 - DENSITY = 15-30 LBS/FT³
 - WATER ABSORPTION = 0.1 MAX LBS/FT²
 - TENSILE = 150 MIN. PSI
 - ELONGATION = 350 MIN. %

REVISIONS				APPROVALS				EASTERN MUNICIPAL WATER DISTRICT STANDARD DRAWING	
NO.	DATE	INITIAL	DESCRIPTION	APP'D	DATE	INITIAL	DATE		
5	4/23/21	GS	REVISED NOTES TO INCLUDE RECYCLED WATER COLOR AND TAPE	AGA	4/23/21				
4	11/22/17	GS	UPDATED TITLE BLOCK, LOGO, FONT, ADDED CLOSED CELL NEOPRENE, REVISED NOTE 4	AGA	11/22/17	VJB	5/8/96		
3	11/30/07	RE	REVISED NOTE 1			GM	5/10/96		
2	5/20/02	JLG	REVISED NOTE 1	VJB	5/20/02	JEW	6/11/96		
						ML	5/9/96		
REFERENCES: SUPERCEDES A-537				SCALE: NONE				PIPELINE INSTALLATION PVC AND DIP	
FILE I.D.: \kauai\eng\std dwgs\B-408.dgn				DRAWN BY: KER		RECOMMENDED <i>Charlie J. Bachmann</i> 6/11/96 DIRECTOR OF ENGINEERING DATE			