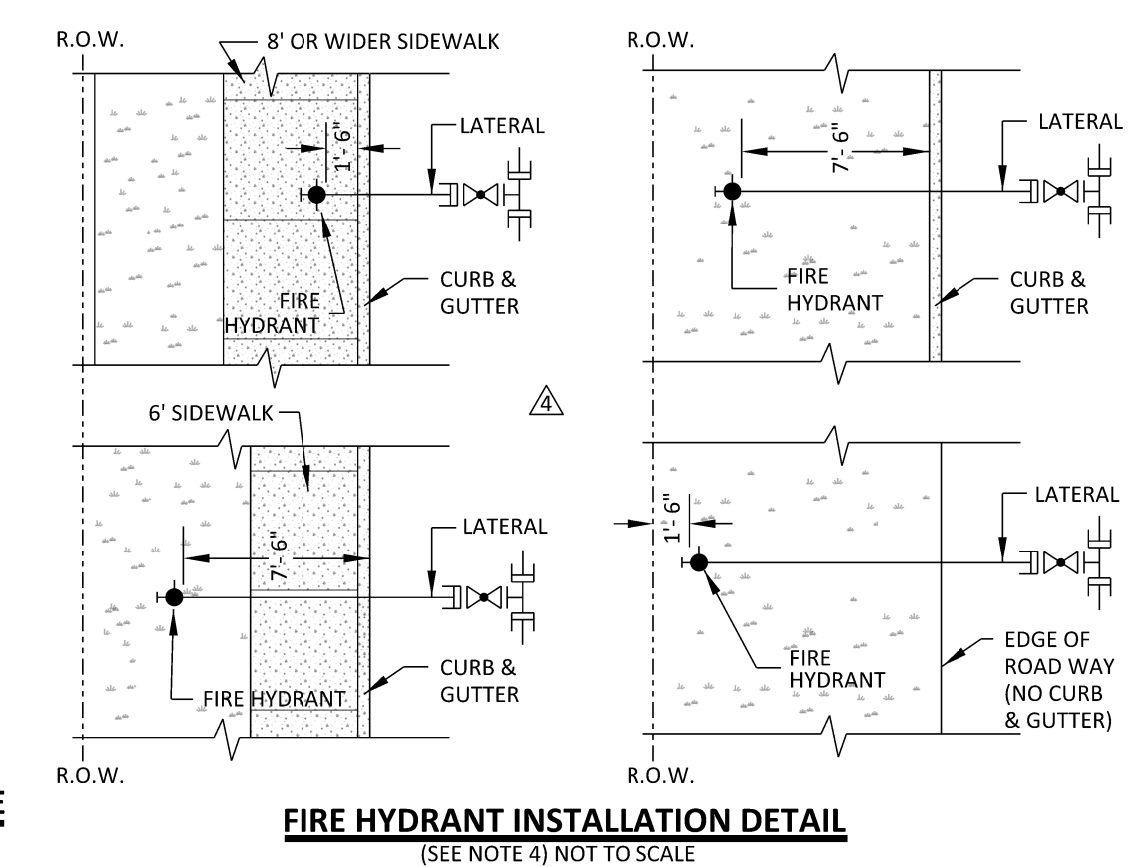


- NOTES:**
- HYDRANT TO BE PAINTED OSHA SAFETY YELLOW OR APPROVED EQUAL.
 - HYDRANT TOPS AND NOZZLE CAPS, 1500 gpm OR GREATER, TO BE LIGHT BLUE.
 - HYDRANT TOPS AND NOZZLE CAPS, 1000 gpm TO 1499 gpm, TO BE GREEN.
 - HYDRANT TOPS AND NOZZLE CAPS, 500 gpm TO 999 gpm, TO BE ORANGE.
 - HYDRANT TOPS AND NOZZLE CAPS, LESS THAN 500 gpm, TO BE RED.
 - ALL FLANGES SHALL BE FULL WELDED (DOUBLE PASS) AND COATED IN THE FIELD PER NOTE 5.
 - ALTERNATE MATERIALS MAY BE USED WHEN SPECIFIED.
 - FIRE HYDRANT LOCATIONS:
 - FIRE HYDRANT SHALL BE PLACED
 - 1'-6" BEHIND CURB FACE WHEN WIDTH OF SIDEWALK IS 8' OR WIDER.
 - 7'-6" BEHIND CURB FACE WHEN WIDTH OF SIDEWALK IS 6' WIDE.
 - 7'-6" BEHIND CURB FACE WHEN THERE IS NO SIDEWALK.
 - 1'-6" WITHIN ROAD RIGHT-OF-WAY WHEN NO CURBS OR SIDEWALKS ARE PROPOSED.
 - FIRE HYDRANT TO BE 1' BACK FROM INTERSECTION OF SIDEWALK WITH CORNER APRON.
 - AT OTHER THAN STREET INTERSECTIONS FIRE HYDRANTS TO BE ON LOT LINES.
 - FIELD COATING FOR EXPOSED PIPE SHALL BE PER EMWD SPECS AND APPROVED MATERIALS.
 - A MINIMUM 3 FT CLEAR SPACE SHALL BE MAINTAINED AROUND THE CIRCUMFERENCE OF THE FIRE HYDRANT.
 - WHEN EMWD FIRE HYDRANTS ARE INSTALLED IN AREAS PRONE TO BEING STRUCK BY VEHICLES, FIRE HYDRANT MUST INCLUDE A HYDRANTGUARD MODEL HG1-611-822 OR HG2-611-822 HYDRANT CHECK VALVE OR APPROVED EQUAL. (I.E. PARKING ISLANDS, ADJACENT DRIVE AISLES, NON-STANDARD WIDTH STREETS, FIRE HYFRANT 18-INCHES FROM CURB FACE, ETC).



REVISIONS					APPROVALS			
NO.	DATE	INITIAL	DESCRIPTION	APP'D	DATE	DESIGN	INITIAL	DATE
4	6/1/23	GS	REVISED F.H. SETBACK, TITLE BLOCK, LOGO, NOTES, ADDED BREAKOFF CHECK VALVE & PLACEMENT DETAILS	AG	6/1/23	CONSTRUCTION		
3	10/2/06	RE	REVISED F.H. DIMENSION, GRADE & BREAK-OFF NOTES	JM	10/10/06	INSPECTION		
2	5/18/00	GR	REV NOTES 1, 4, 6, ADD CONC SUPPORT & DIM	VJB	5/22/00	OPERATIONS	PK	5/18/93
1	4/1/93		REDRAWN W/CADD ON MYLAR	VJB	7/2/93	SUBMITTED	VJB	5/19/93

REFERENCES: FILE I.D.: J:\Master CAD Files - Restricted\B-356

SCALE: NONE

DRAWN BY: GS

RECOMMENDED *Joseph D. Van Sickle* 6/3/93
DIRECTOR OF ENGINEERING DATE



EASTERN MUNICIPAL WATER DISTRICT
STANDARD DRAWING

**6" X 1-2 1/2" X 1-4" FIRE HYDRANT
INSTALLATION STEEL PIPE**

APPROVED *G. Hooite Rugge* 7/2/93
ASSISTANT GENERAL MANAGER DATE

B-356