

USE EMWD APPROVED FIRE HYDRANT
(6" x 1-2 1/2" x 1-4")
(SEE LEFT FOR OUTLET ORIENTATION)

NOTE: ALL CAP & OPERATOR NUTS
TO BE 1-1/8" FACE TO POINT

△ BREAK-OFF RISER BOTTOM FLANGE
1-1/2" BELOW CURB OR SIDEWALK

PLASTIC CAPS WITH
CHAINS & RINGS

24" MIN △

6" FLANGED CAST IRON
BREAK-OFF RISER WITH
8-7/8" BOLT HOLES ONE END
& 6-3/4" BOLT HOLES
OTHER END X LENGTH AS NEEDED
(CEMENT MORTAR LINED)

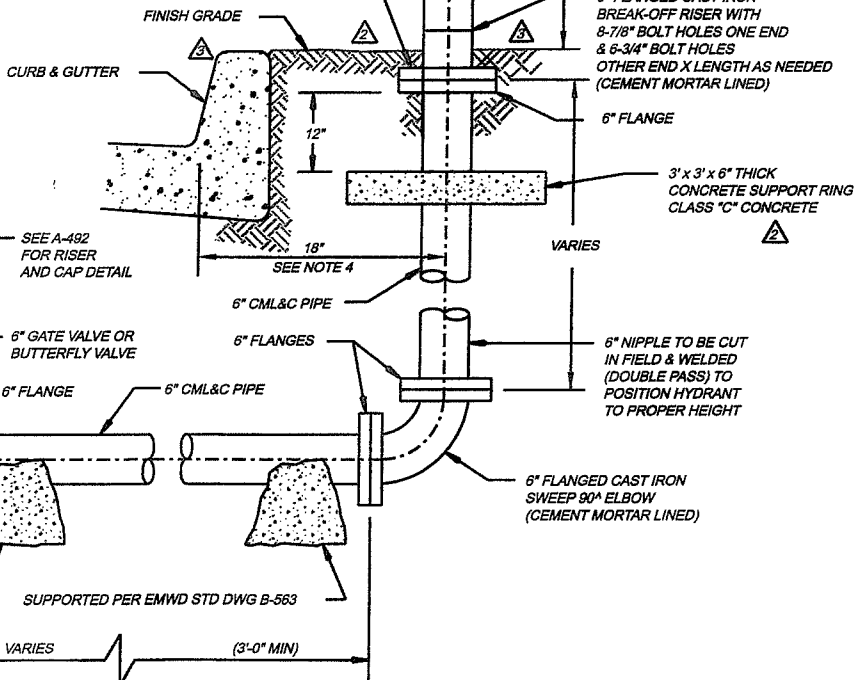
6" FLANGE

3' x 3' x 6" THICK
CONCRETE SUPPORT RING
CLASS "C" CONCRETE

VARIES △

6" NIPPLE TO BE CUT
IN FIELD & WELDED
(DOUBLE PASS) TO
POSITION HYDRANT
TO PROPER HEIGHT

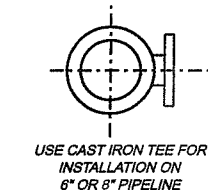
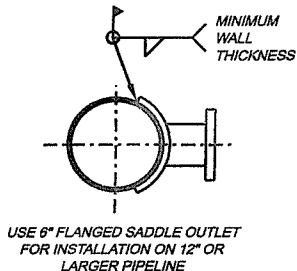
6" FLANGED CAST IRON
SWEEP 90° ELBOW
(CEMENT MORTAR LINED)



FIRE HYDRANT ASSEMBLY

GENERAL NOTES

- △ 1. PAINTS:
HYDRANT TOPS AND NOZZLE CAPS, 1500 gpm OR GREATER,
TO BE LIGHT BLUE.
HYDRANT TOPS AND NOZZLE CAPS, 1000 gpm TO 1499 gpm,
TO BE GREEN.
HYDRANT TOPS AND NOZZLE CAPS, 500 gpm TO 999 gpm,
TO BE ORANGE.
HYDRANT TOPS AND NOZZLE CAPS, LESS THAN 500 gpm,
TO BE RED.
2. ALL FLANGES SHALL BE FULL WELDED (DOUBLE PASS) AND
COATED IN THE FIELD AS DIRECTED BY ENGINEER PER NOTE 5.
3. ALTERNATE MATERIALS MAY BE USED WHEN SPECIFIED.
4. FIRE HYDRANT LOCATIONS:
A. FIRE HYDRANT SHALL BE PLACED
1. 1'-6" BEHIND CURB FACE WHEN WIDTH OF SIDEWALK
IS 8' OR WIDER.
2. 7'-6" BEHIND CURB FACE WHEN WIDTH OF SIDEWALK
IS 6' WIDE.
3. 7'-6" BEHIND CURB FACE WHEN THERE IS NO
SIDEWALK.
△ 4. 1'-6" WITHIN ROAD RIGHT-OF-WAY WHEN NO CURBS
OR SIDEWALKS ARE PROPOSED.
B. FIRE HYDRANT TO BE 1' BACK FROM INTERSECTION OF
SIDEWALK WITH CORNER APRON.
C. AT OTHER THAN STREET INTERSECTIONS FIRE HYDRANTS
TO BE ON LOT LINES.
5. FIELD COATING FOR EXPOSED PIPE SHALL BE PER EMWD SPECS
AND APPROVED MATERIALS.
- △ 6. A MINIMUM 3 FT CLEAR SPACE SHALL BE MAINTAINED AROUND
THE CIRCUMFERENCE OF THE FIRE HYDRANT.



PIPELINE INSTALLATION

REVISIONS					APPROVALS			
NO.	DATE	INITIAL	DESCRIPTION	APP'D	DATE	INITIAL	DATE	
△	4/1/93		REDRAWN BY CADD ON MYLAR	VJB	7/2/93			DESIGN
△	5/18/00	GR	REV NOTES 1,4,6,ADD CONC SUPPORT & DIMS	VJB	5/22/00			CONSTRUCTION
△	10/2/06	RE	REVISED F.H. DIMENSION, GRADE & BREAK-OFF NOTES	JM	10/10/06			INSPECTION
								OPERATIONS
								SUBMITTED



RIVERSIDE COUNTY STANDARD FIRE HYDRANT
EASTERN MUNICIPAL WATER DISTRICT
STANDARD DRAWING

6" x 1-2 1/2" x 1-4" FIRE HYDRANT
INSTALLATION—STEEL PIPE

REFERENCES: ORIG DRAWN BY McM 5/69
FILE I.D.: KAUAI/ENGINEERING/STD/DWG

SCALE: NONE
DRAWN BY

RECOMMENDED Joseph D. Van Sickle 6/3/93
DIRECTOR OF ENGINEERING DATE

APPROVED G. Hoote Ruggs 7/2/93
CHIEF ENGINEER DATE

B-356 △