

OUTLET DIMENSIONS		SADDLE SIZE	SADDLE O.D.
NOM DIA	T1 (MIN)	T2 X W	OD
4"	12 GA	5/16" X 2"	10"
6"	12 GA	5/16" X 3"	13"
8"	12 GA	3/8" X 4"	17"
12"	3/16"	3/8" X 6"	25"
14"	1/4"	3/8" X 7"	29"
16"	1/4"	1/2" X 7"	31"
18"	1/4"	1/2" X 8"	36"
20"	1/4"	1/2" X 9"	40"
24"	5/16"	1/2" X 10"	46"
30"	5/16"	1/2" X 12"	56"
36"	5/16"	1/2" X 14"	66"

NOTES:

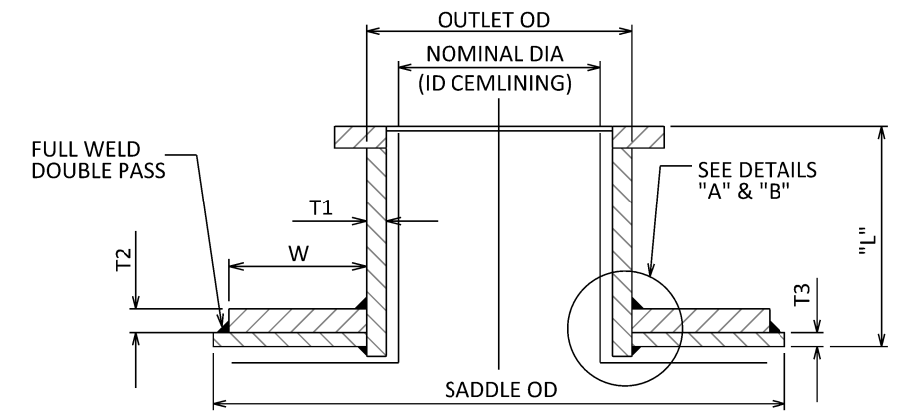
- SADDLE CURVATURE TO BE SHOP FORMED TO MEET OUTSIDE STEEL DIAMETER OF PIPE.
- AFTER SHOP WELDING OF HALF COUPLING TO CURVED SADDLE, SHOP GRIND HALF COUPLING TO MEET DIAMETER OF PIPE.

SERVICE SADDLE OUTLETS			
CORPORATION STOPS	EXTRA HEAVY HALF COUPLING SIZE	SADDLE OUTSIDE DIA	SADDLE PLATE THICKNESS
3/4" (CS)	1-1/4" (IP)	4-1/2" (OD)	3/16"
1" (CS)	1-1/4" (IP)	4-1/2" (OD)	3/16"
1-1/2" (IP)	2-1/2" (IP)	6-1/2" (OD)	1/4"
2" (IP)	2-1/2" (IP)	6-1/2" (OD)	1/4"

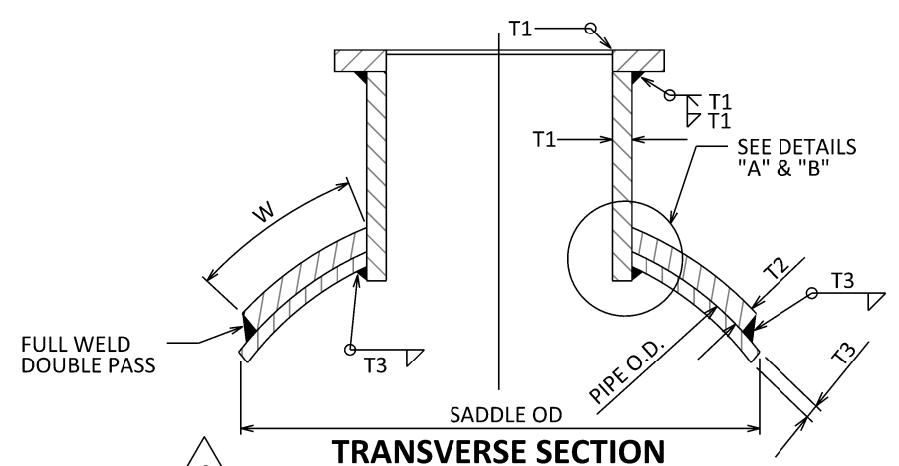
WELDED SERVICE SADDLE OUTLETS SHOWING BRONZE BUSHING FOR 3/4" THRU 2" CORPORATION STOPS

NOTES:

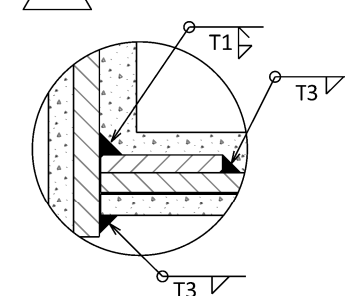
- OUTLETS ARE DESIGNED FOR A MAXIMUM TEST PRESSURE OF 225 PSI.
- FABRICATION SHALL BE IN ACCORDANCE WITH THE APPLICABLE SECTIONS OF THE LATEST REVISION OF THE API - ASME CODE FOR UNFIRED PRESSURE VESSELS.
- ALL OUTLETS SHALL BE CEMENT MORTAR LINED AND COATED. ALL OTHER BARE METAL SHALL BE COATED WITH AN APPROVED BITUMASTIC.
- REFER TO B-288 FOR FLANGE DIMENSIONS.
- L = 12" FOR SHOP FABRICATED OUTLETS. L = 5" MIN/6" MAX FOR FIELD INSTALLED WET TAPPED OUTLETS.
- T3 IS THE PIPE CYLINDER THICKNESS.



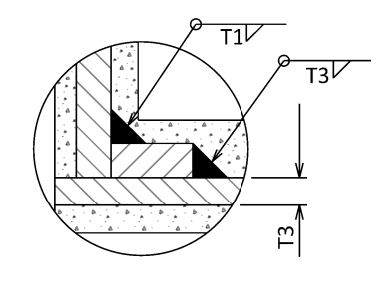
LONGITUDINAL SECTION



TRANSVERSE SECTION




DETAIL "A"
SIZES 24" & LARGER



DETAIL "B"
SIZES 4" THRU 20"

**PIPE OUTLETS
SADDLE REINFORCEMENT**

REVISIONS					APPROVALS			 EASTERN MUNICIPAL WATER DISTRICT	EASTERN MUNICIPAL WATER DISTRICT STANDARD DRAWING		
NO.	DATE	INITIAL	DESCRIPTION	APP'D	DATE	DESIGN	INITIAL		DATE	SADDLE OUTLETS 3/4" TO 36" DIAMETERS	
						CONSTRUCTION			APPROVED <i>Doyle J. Boen</i> CHIEF ENGINEER DATE		
3	9/11/20	GS	UPDATED TITLE BLOCK, LOGO AND FONT	<i>AGA</i>	9/11/20	INSPECTION					B-271
2	10/15/03	CM	ADDED SADDLE O.D.	<i>VJB</i>	10/15/03	OPERATIONS					
1	8/11/97	CRD	A-297, B-271 REDRAWN ON CAD. ADDED NOTE 6.	<i>VJB</i>	8/12/97	SUBMITTED	<i>LVJ</i>				
REFERENCES: SUPERCEDES A-297				SCALE: NONE		RECOMMENDED <i>D.C. Stewart</i>		DATE		APPROVED DATE	
FILE I.D.: \kauai\eng\std dwgs\B-271.dgn				DRAWN BY: CRD		DIRECTOR OF ENGINEERING		DATE			