

APPENDIX I

Hazardous Materials Testing

[PAGE LEFT INTENTIONALLY BLANK]



P. O. Box 801357
Santa Clarita, CA 91380
Phone: 877.274.2422
Fax: 661.775.7628
www.CSIServices.biz

Providing Quality Technical Services to the Coating Industry

July 6, 2020

Via Email

Sam Valdez
Eastern Municipal Water District
P.O. Box 8300
Perris, CA 92572

Phone: 951-300-3100
Email: valdezs@emwd.org

Subject: Results - Sample Analysis

Re: Asbestos Testing – Various Sites

Dear Mr. Valdez:

Please find attached the results of the analysis performed on the material obtained from the designated area to be disturbed at the Sun City RWRP, Warren RD BPS and Commonwealth BPS locations.

The sample was collected on June 23, 2020 by Ben Dias of CSI Services, Inc. (CSI) and transmitted to Schneider Laboratories, Richmond, VA using proper chain-of-custody protocol. A Summary Data Table and Photo Summary are attached.

Thank you for your confidence in CSI Services, Inc., and please give us a call with any questions.

Sincerely,
CSI Services, Inc.

A handwritten signature in blue ink, appearing to read 'Chris Sweeney'.

Chris Sweeney

Hawaiian Office: P.O. Box 671, Aiea, HI 96701
Northern California Office: PO Box 371 Sonoma, CA 95476
Coating Specialists and Inspection Services, Inc.

Consulting

Evaluations

Tank Diving

Inspection



Summary Data Table

Fiber Sample	Description	Asbestos Fibers	Non Fibrous Material	Synthetic Fiber
CSI 2	Sun City RWRF Brine Pipe N.A.P.	None Detected	100%	0%
CSI 4	Warren Rd. BPS Concrete	None Detected	100%	0%
CSI 6	Commonwealth BPS Concrete	None Detected	100%	0%

Photo Summary

CSI 2 – Sun City RWRP



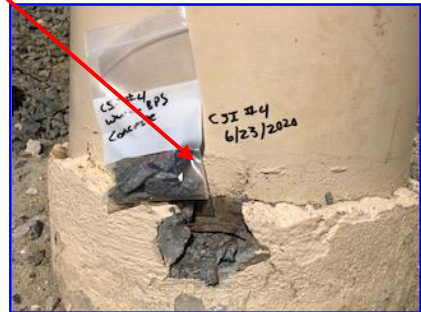
CSI 2



CSI 4 – Warren Rd. BPS



CSI 4



CSI 6 – Commonwealth BPS



CSI 6



NOTICE: This report represents the opinion of CSI Services, Inc. This report is issued in conformance with generally acceptable industry practices. While customary precautions were taken to insure that the information gathered and presented is accurate, complete and technically correct, it is based on the information, data, time, and materials afforded.