

Appendix C

CAM 17 Coating Analysis

[Page Left Intentionally Blank]



P. O. Box 801357
Santa Clarita, CA 91380
Phone: 877.274.2422
Fax: 661.775.7628
www.CSIServices.biz

Providing Quality Technical Services to the Coating Industry

March 27, 2019

Via Email

Mr. Jeff Allred
Eastern Municipal Water District
P.O. Box 8300
Perris, CA 92572

Office: 951-928-3777
Email: allredjeff@emwd.org

Subject: Results - Paint Sample Analysis

Re: Redlands & Cottonwood Booster

Dear Mr. Jeff Allred:

Please find attached the results of the analysis performed on the 8 (eight) paint samples obtained from the designated area to be disturbed on the above referenced facility.

The samples were collected on March 15, 2019 by Bret Bennett of CSI Services, Inc. (CSI) and transmitted to Schneider Laboratories, Richmond, VA using proper chain-of-custody protocol. Each of the paint samples was analyzed for the CAM 17 Metals (CAM 17). The certified laboratory tested each paint sample in accordance with EPA 3050B/Method 6010B. A Summary Data Table and Photo Summary are attached.

Thank you for your confidence in CSI Services, Inc., and please give us a call with any questions.

Sincerely,
CSI Services, Inc.

A handwritten signature in blue ink, appearing to read 'Chris Sweeney'.

Chris Sweeney

Hawaiian Office: P.O. Box 671, Aiea, HI 96701
Northern California Office: PO Box 371 Sonoma, CA 95476
Coating Specialists and Inspection Services, Inc.

Consulting

Evaluations

Tank Diving

Inspection

[PAGE LEFT INTENTIONALLY BLANK]



Summary Data Table

Redlands & Cottonwood Booster	CSI 1	CSI 2	CSI 3	CSI 4	CSI 5	CSI 6	CSI 7	CSI 8
	Compressor	Murphy Panel	Stair Structure	Engine Cooling Water Pipe	Oil Tank	Support Beam Column	Pump #3	Electrical Cabinet
Metal Analysis	Result (mg/kg)	Result (mg/kg)	Result (mg/kg)	Result (mg/kg)	Result (mg/kg)	Result (mg/kg)	Result (mg/kg)	Result (mg/kg)
Antimony	<6.60	12.7	<34.5	<10.2	<7.64	<20.0	<8.89	<9.26
Arsenic	<6.60	21.9	<34.5	<10.2	<7.64	<20.0	<8.89	<9.26
Barium	58.9	186.0	<34.5	7250.0	24.0	100.0	2150	14.0
Beryllium	<6.60	<9.01	<34.5	<10.2	<7.64	<20.0	<8.89	<9.26
Cadmium	<6.60	14.2	<34.5	<10.2	<7.64	<20.0	<8.89	<9.26
Chromium	<16.50	44.7	<86.2	28.4	<19.1	<50.0	45.5	<23.2
Cobalt	700.0	<9.01	499.0	107.0	<7.64	587.0	118.0	885.0
Copper	22.5	49.8	87.9	248.0	<7.64	<50.0	501.0	<23.2
Lead	20.5	18.8	<34.5	26.4	<7.64	<20.0	<8.89	19.8
Molybdenum	<6.60	<9.01	<34.5	<10.2	<7.64	<20.0	<8.89	<9.26
Nickel	6.98	36.1	<34.5	30.7	<7.64	<20.0	<8.89	10.7
Selenium	<6.60	<9.01	<34.5	<10.2	<7.64	<20.0	<8.89	<9.26
Silver	<6.60	<9.01	<34.5	<10.2	<7.64	<20.0	<8.89	<9.26
Thallium	<6.60	<9.01	<34.5	<10.2	<7.64	<20.0	<8.89	<9.26
Vanadium	<6.60	<9.01	<34.5	<10.2	<7.64	<20.0	<8.89	<9.26
Zinc	141.0	126.0	647.0	2770.0	58.6	51.0	526	46500
Mercury	<0.112	<0.105	0.128	<0.113	<0.109	NT	<0.105	0.126

Notes:

NT – Not determined

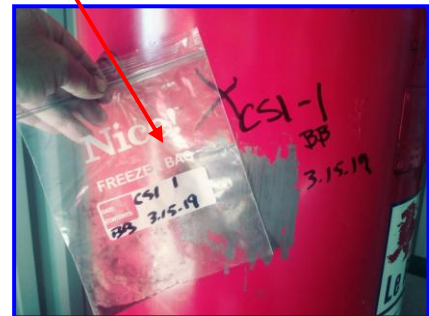
1 – Lead Based Paint contains 0.5% lead by Weight per Federal statute

2 – The OSHA Lead in Construction Standard, 29 CFR 1926.62 is invoked if **any** lead is present in the sample.

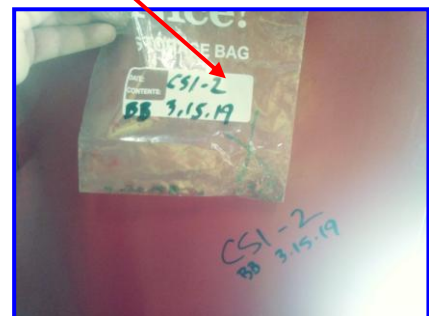
Redlands & Cottonwood Booster

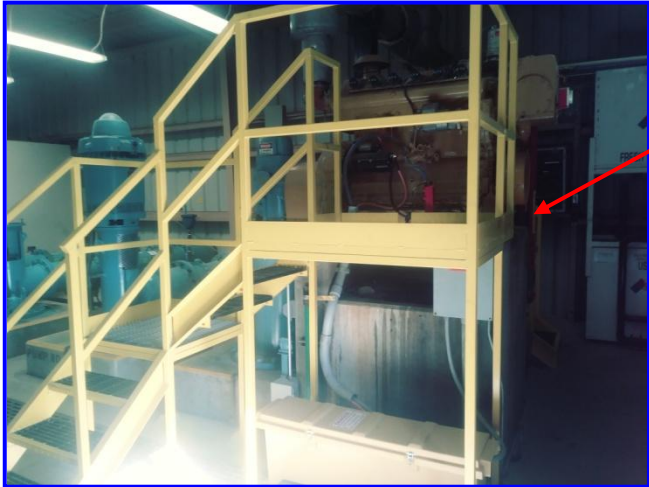


CSI 1

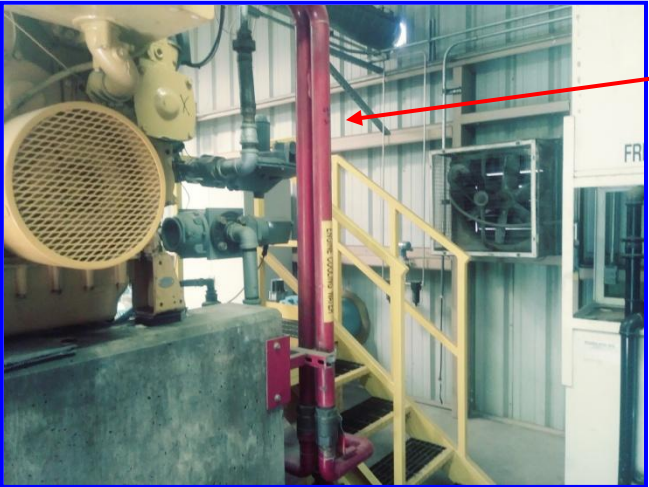
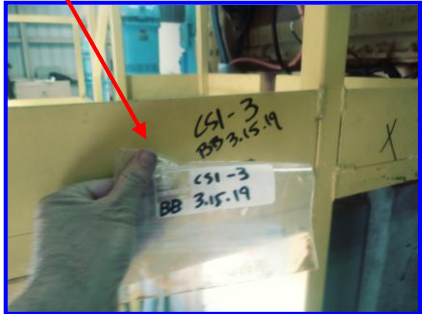


CSI 2





CSI 3



CSI 4



CSI 5





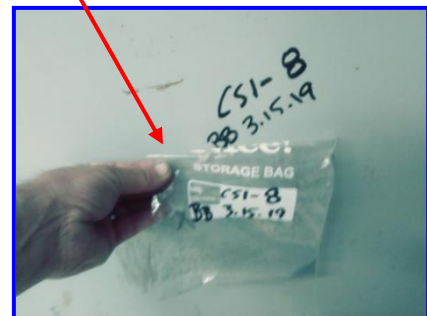
CSI 6



CSI 7



CSI 8



NOTICE: This report represents the opinion of CSI Services, Inc. This report is issued in conformance with generally acceptable industry practices. While customary precautions were taken to insure that the information gathered and presented is accurate, complete and technically correct, it is based on the information, data, time, and materials afforded.