

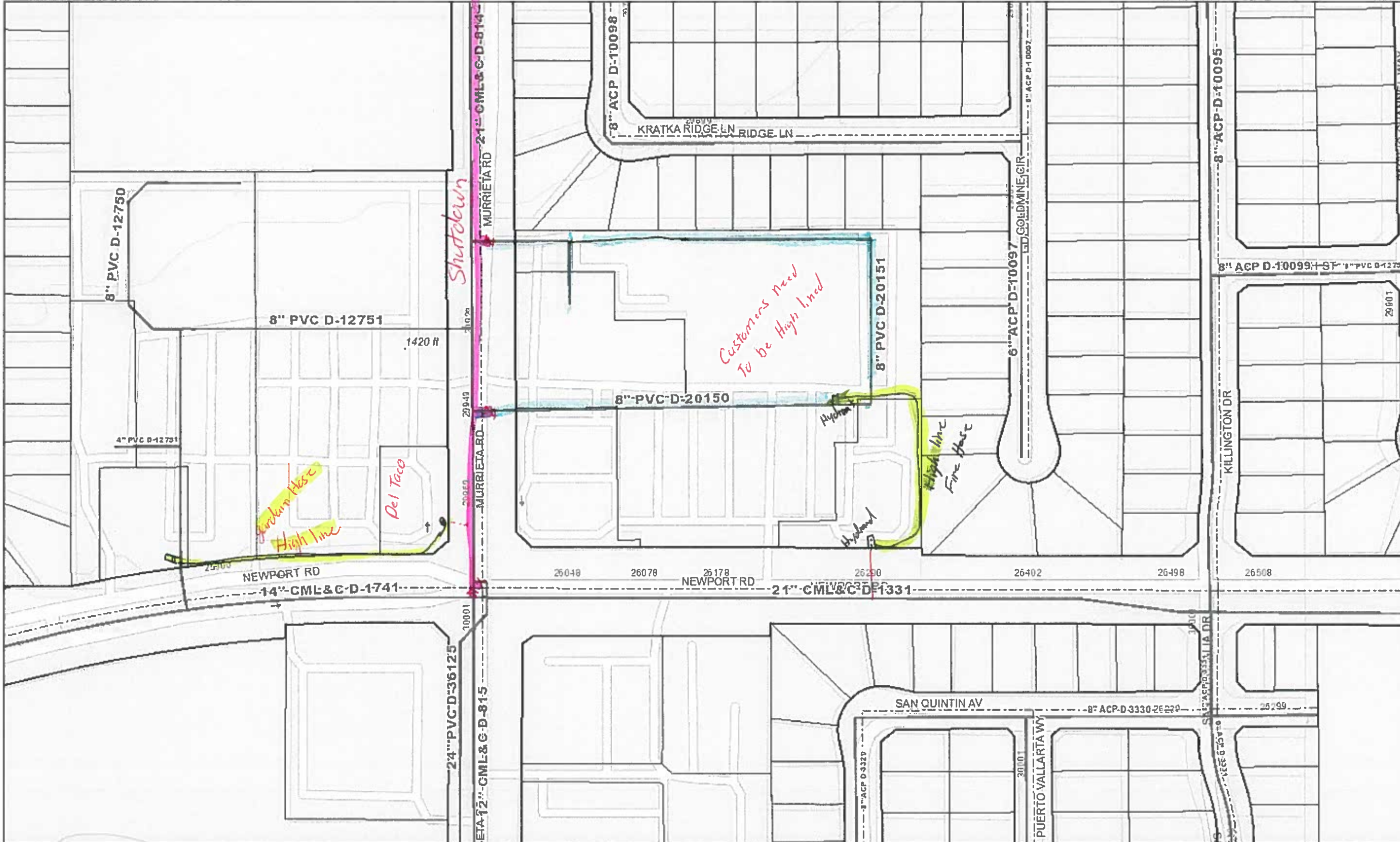
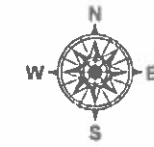
APPENDIX L

Highline Conceptual Sketch (For Reference Only)

[PAGE LEFT INTENTIONALLY BLANK]



Murrieta Road
EMWD HydroMapper
Connection #2



Legend

- ⊕ Wtr Interagency Tie
- Wtr Main
 - As Built
 - - CIP
 - - Wtr Main Abandoned
- Streets
- Wtr Pump Station
- Wtr Pump Station Polygon
- ⊙ Wtr Service Sampling Statc
- ⊠ Wtr Tank
- Wtr Well
- ⊞ Wtr Treatment Plant
- Wtr Treatment Plant Polygc
- MWD Connections
- MWD Canals
- EMWD District Boundary
- ★ EMWD Main Office
- EMWD Sites
- Highway
- EMWD Parcel Lines
 - Lot
 - ROW
- EMWD Parcel Polygons

Notes

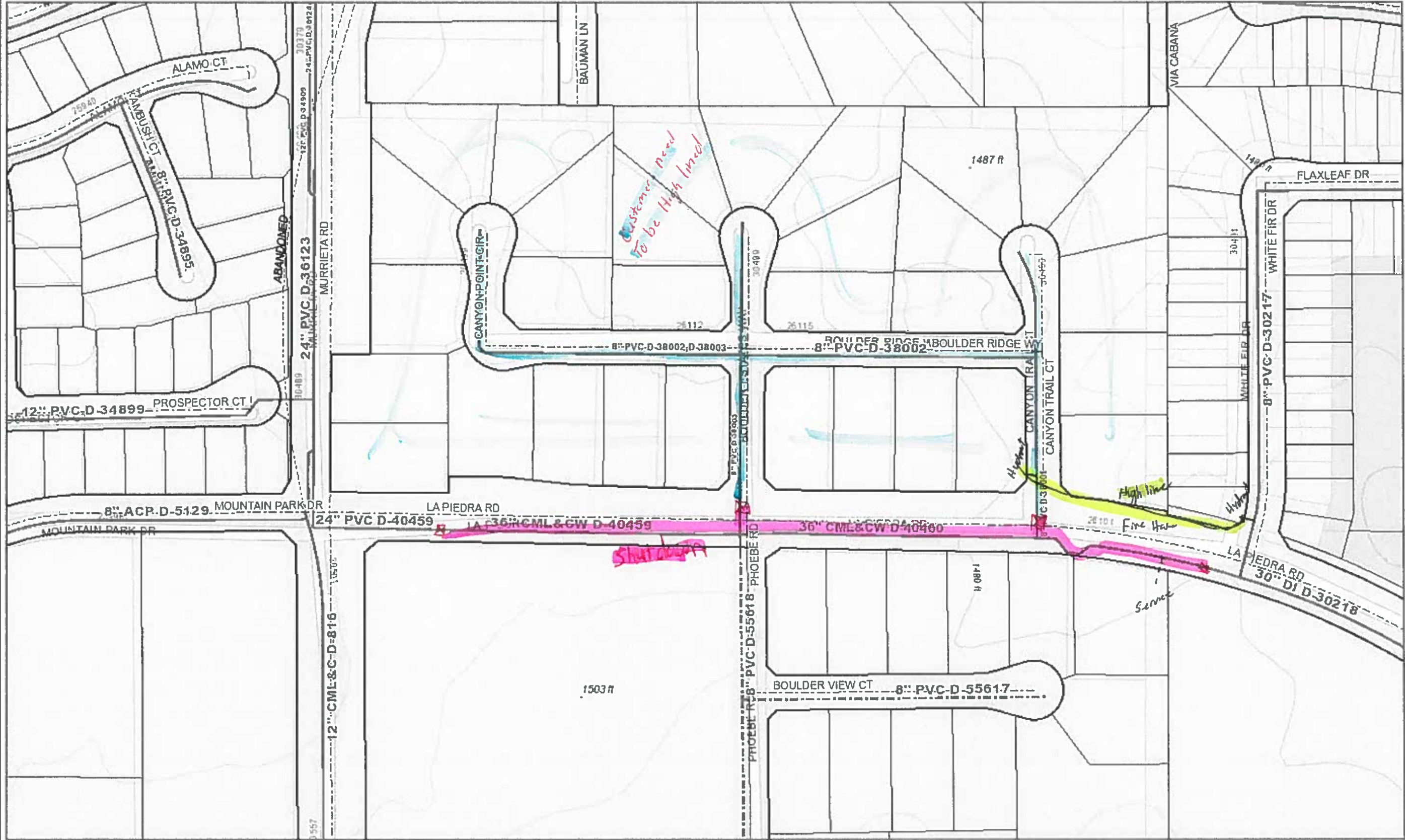
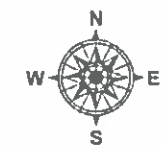
SCALE 1: 1,876
0 235 Feet
Map Produced 01/27/2021 By EMWD Staff

© EMWD

GIS data shown is for informational purposes only, is subject to change without notice and may not be suitable for legal, engineering, construction, or surveying purposes. Information should be reviewed against reliable sources to ascertain its usability. Eastern Municipal Water District assumes no liability for any incorrect results, any lost profits and direct, special, indirect or consequential damages to any party, arising out of or in connection with the use or the inability to use the data hereon or the services.



Murrieta Road
EMWD HydroMapper
Connection #6



Legend

- ⊕ Wtr Interagency Tie
- Wtr Main
 - As Built
 - - CIP
- - Wtr Main Abandoned
- - Streets
- Wtr Pump Station
- Wtr Pump Station Polygon
- ⊙ Wtr Service Sampling Static
- Wtr Tank
- Wtr Well
- Wtr Treatment Plant
- Wtr Treatment Plant Polygc
- MWD Connections
- MWD Canals
- EMWD District Boundary
- ★ EMWD Main Office
- EMWD Sites
- Highway
- EMWD Parcel Lines
 - Lot
 - ROW
- EMWD Parcel Polygons

Notes

SCALE 1: 1,876
0 235 Feet

Map Produced 01/27/2021 By EMWD Staff

© EMWD

GIS data shown is for informational purposes only, is subject to change without notice and may not be suitable for legal, engineering, construction, or surveying purposes. Information should be reviewed against reliable sources to ascertain its usability. Eastern Municipal Water District assumes no liability for any incorrect results, any lost profits and direct, special, indirect or consequential damages to any party, arising out of or in connection with the use or the inability to use the data hereon or the services.