



August 2, 2017

ADDENDUM NO. 1 TO SPECIFICATION NO. 1322
AquaSel Brine Concentration Demonstration

This addendum to the specifications is for the purpose of adding, clarifying, or deleting certain information to the construction drawings and project specifications as follows:

NOTICE INVITING BID

REPLACE NIB-5 in its entirety:

NIB-5. Mandatory Pre-Bid Walk-Through a mandatory Pre-Bid Walk-Through was conducted on **TUESDAY, AUGUST 1, 2017 at 9:00 a.m.**, at the Menifee/Perris I Desalter located at 29541 Murrieta Road, Sun City, CA 92586.

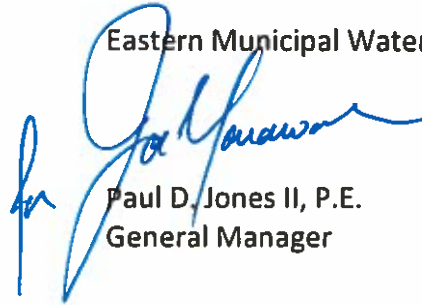
NOTE: Refer to EMWDs website to obtain the Pre-Bid Walk-Through Sign-In Sheet.

The District would like to offer an additional, **OPTIONAL**, Pre-Bid Walk-Through to view the interior of Menifee/Perris I Desalter facility on **August 10, 2017 at 9:00 AM**. Those who attended the walk-through meeting on August 1, 2017 are invited to participate in this optional walk-through.

Personal Protective Equipment (PPE). For your safety, attendees shall bring and wear hard hats, safety vests, and close-toed shoes, if construction is present.

QUESTIONS: All questions must be submitted **in writing by 5:00 p.m. on Monday, AUGUST 16, 2017** to Mr. Warren Huang c/o Brittnee Francis; EMAIL: huangw@emwd.org & francisb@emwd.org or FAX: 951-928-6111. ***Questions received after this time may not be responded to.***

Eastern Municipal Water District



Paul D. Jones II, P.E.
General Manager

PE: ELS
PM: ELS
DFE: Bon
DE: AE

PDJ:bf:jrm:ae

ATTACHMENTS:

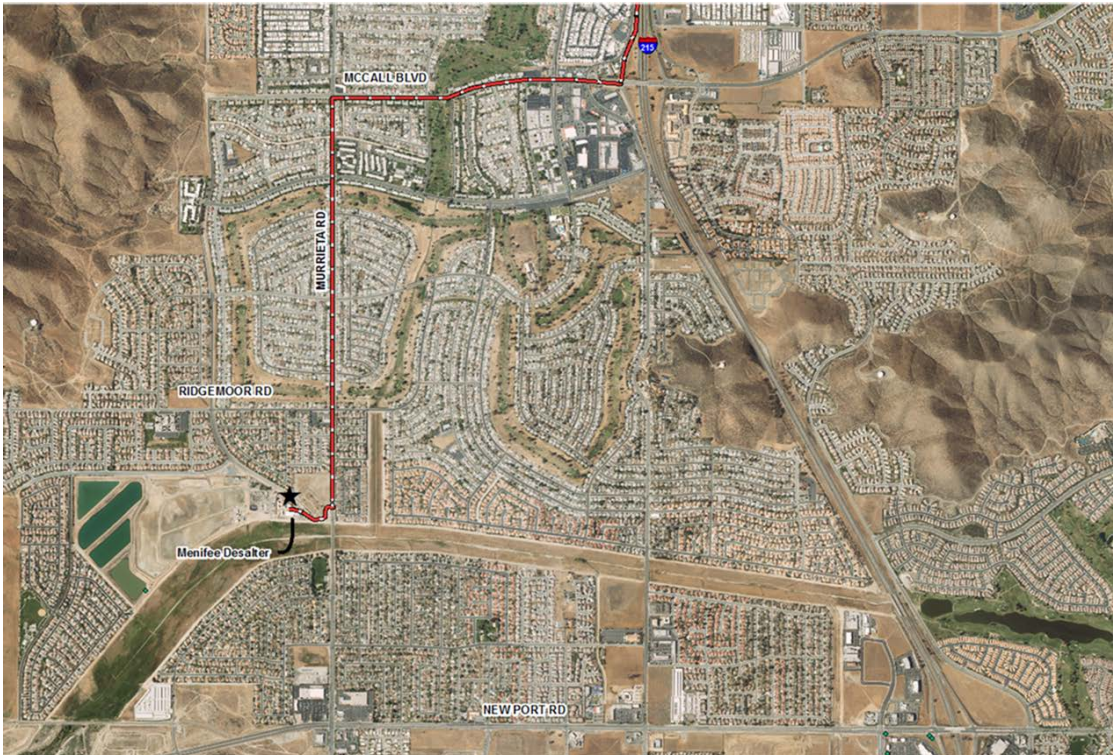
00016 Pre-Bid Walk-Through Map & Directions

Mandatory Pre-Bid Walk-thru Map and Directions

The Pre-bid Job walk will be held at the Menifee/Perris I Desalter Administration Building located at 29541 Murrieta Road, Sun City, CA 92586.

From the I-215 Freeway:

- Exit on McCall Boulevard, heading west
- Turn left (south) at Murrieta Road
- Pass Cam del Sol Sur (east side of street)
- Turn right on next driveway on right (west) side of Murrieta Road
- Follow the road to the Menifee/Perris I Desalter facility entrance
- Go to the facility's Administration Building



**Menifee/Perris I Desalter
Location Map**