

AGENDA

HEMET – SAN JACINTO WATERMASTER BOARD OF DIRECTORS

February 27, 2017
3:00 pm
EMWD - Board Room
2270 Trumble Road, Perris, CA 92750

CALL TO ORDER

PLEDGE OF ALLEGIANCE

ROLL CALL

I. PUBLIC COMMENTS

Any person may address the Board on any subject within the Watermaster's jurisdiction which is not on the agenda. However, any non-agenda matter that requires action will be referred to staff for a report and action at a subsequent Board meeting. Any person may also address the Board on any agenda matter at the time that matter is discussed, prior to Board action.

II. ADDITIONS/DELETIONS TO THE AGENDA

III. REPORTS

The following agenda items are reports. They are placed on the agenda to provide information to the Board and public. There is no action called for in these items.

A. Board Member Comments/Questions/Reports

- Rules and Regulations Committee – February 7, 2017
- Reserves and Investments Committee - TBD

B. Advisor Report

C. Legal Counsel Report

D. Treasurer Report

IV. CONSENT CALENDAR

A. Approval of Minutes – November 28, 2016 Regular Board Meeting.

Recommendation: Adopt a motion to approve item A on the Consent Calendar.

Consent Calendar items are expected to be routine and non-controversial and are to be acted upon by the Board at one time without discussion. If any Board member, staff member, or interested person requests that an item be removed from the Consent Calendar, it will be removed from the Consent Calendar for separate action.

V. ACTION ITEMS

The following items call for discussion and possible action by the Board. These items are placed on the Agenda so that the Board may discuss and possibly take action on the items if the Board desires.

- A. Election of Officers – Election of Officers per Rules & Regulations Section 2.0
- B. 2016 Financial Audit – Presentation by Squarmilner Certified Public Accountants and Financial Advisors Summarizing 2016 Audit Findings and Recommendations.
Recommendation: Adopt a motion to Receive and submit the 2016 Financial Audit Report as part of the Watermaster 2016 Annual Report to the Court.
- C. Groundwater Storage Change Calculations – Presenting estimated groundwater storage changes between 2015 and 2016 using the methodology used in the previous year.
Recommendation: Receive and file estimated storage change between the years 2015 and 2016, and authorized the Advisor to submit required information to the Department of Water Resources as part of the Water code 10720.8 requirements.
- D. 2016 Annual Report – Presentation to summarize 2016 Annual Report.
Recommendation: Adopt a motion to receive and file the 2016 Annual Report with the Court and Department of Water Resources after accommodating any additional comments from Legal Counsel and Technical Advisory Committee.
- E. 2016 In-lieu Agreement Cost Increase – Explanation of why the actual cost for the in-lieu agreement was different than the invoiced amount.
Recommendation: Authorize Advisor to process the In-lieu Agreement invoice for \$185,919.25 which is \$29,919.25 above the budgeted amount of \$156,000.

VI. INFORMATIONAL ITEMS/CORRESPONDENCE

- A. Corrections to the Unused Soboba Imported Water – Review of reductions to the Unused Soboba Imported Water that are included in the 2016 Annual Report after including Soboba Golf Course productions as part of the Soboba Tribe production.
- B. Santa Ana River Conservation and Conjunctive Use Project – Status of the proposed conjunctive use project by EMWD.
- C. Status of the Soboba Imported Water Recharge - Presentation by EMWD, on the status of the Soboba Imported Water deliveries and recharge at the Grant Avenue and IRRP ponds.
- D. Future Agenda Items - If Board Members have items for consideration at a future Board Meeting, please state the agenda item to provide direction to the Advisor.

VII. CLOSED SESSION - NONE

VIII. ADJOURNMENT

Next Regular Board of Directors Meeting

May 22, 2017 at 3:00 pm. at:
Eastern Municipal Water District Board Room
2270 Trumble Road, Perris, CA 92750

Upon request, this agenda will be made available in appropriate alternative formats to persons with disabilities, as required by Section 202 of the Americans With Disabilities Act of 1990. Any person with a disability who requires a modification or accommodation in order to participate in a meeting should direct such a request to the Watermaster Executive Assistant at 714-707-4787, at least 48 hours before the meeting, if possible.

Pursuant to Government Code Section 54957.5, any writing that (a) is a public record; (b) relates to an agenda item for an open session of a regular meeting of the Watermaster Board of Directors; and (c) is distributed less than 72 hours prior to that meeting, will be made available for public inspection at the time the writing is distributed to the Board of Directors. Any such writing will be available for public inspection at Watermaster's office located at 2270 Trumble Road, Perris, CA 92750.

DRAFT



EMWD Update

Mike Nusser
February 13, 2017

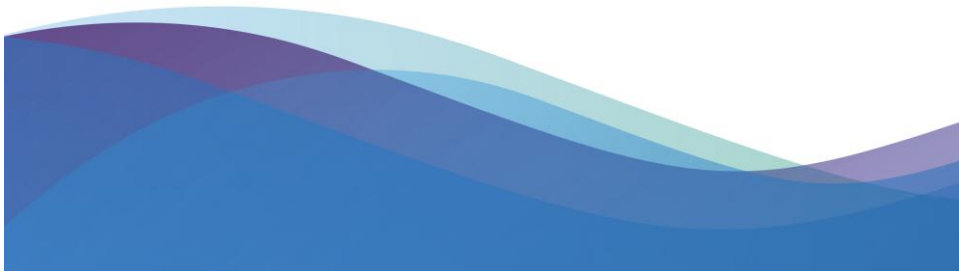
Agenda

- Status of Repairs to Damage at IRRP & Grant
- Update on Soboba Recharge & River Diversions
- Enhanced Groundwater Replenishment Program Public Outreach

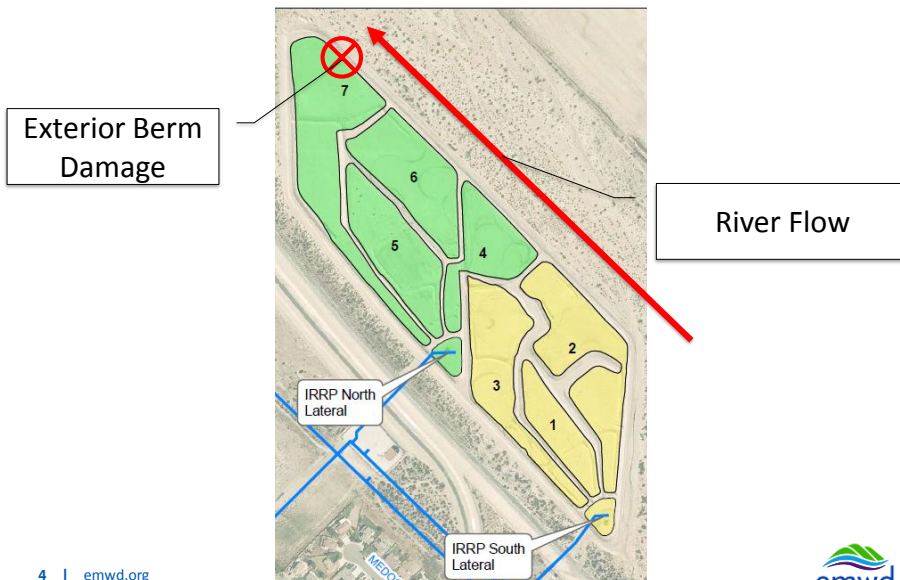




Status of Repairs to Damage at IRRP & Grant



Damage at North End of IRRP Ponds from River Flows



Damage at North End of IRRP Ponds from River Flows



5 | emwd.org



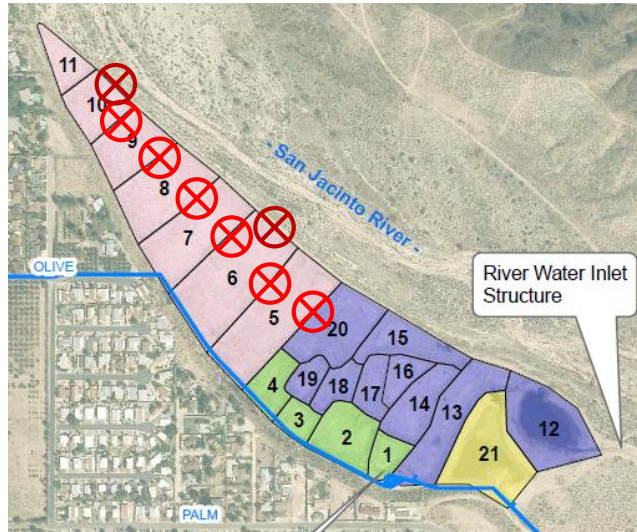
Damage at North End of IRRP Ponds from River Flows



6 | emwd.org



Damage to Berms at Grant due to Berm Breach



7 | emwd.org



Damage to Berms at Grant due to Berm Breach



8 | emwd.org



Damage to Berms at Grant due to Berm Breach



9 | emwd.org



Grant Repair Efforts – Initiated February 1st



10 | emwd.org



Grant Repair Efforts – Initiated February 1st



11 | emwd.org



Update on Soboba Recharge & River Diversions



Soboba Recharge and River Diversion Summary

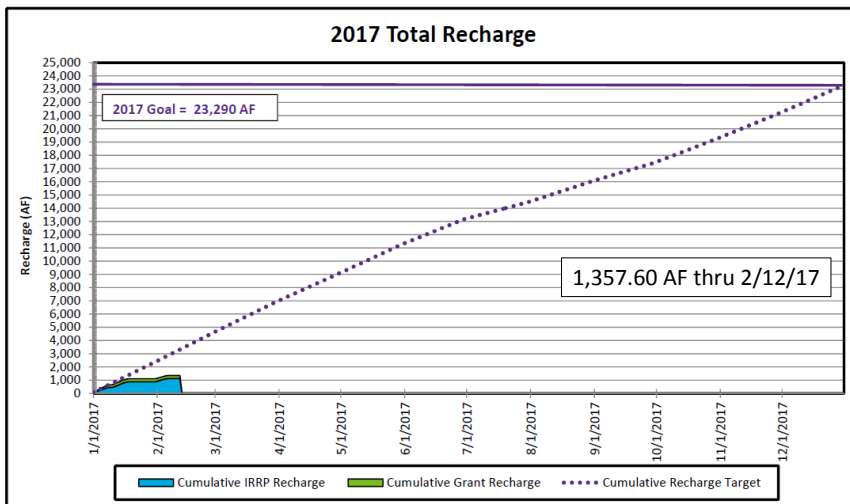
Weekly Imported Raw Water Recharge Report							
Weekly Recharge Summary (02/06/17 - 02/12/17)							
	Grant	IRRP	Total		Grant	IRRP	Total
Weekly Average Flow (gpm)	0.00	1,154.06	1,154.06	Recharge to Meet Monthly Goal (AF)	279.60	812.80	1,092.40
Weekly Total Recharge (AF)	0.00	35.70	35.70	Minimum Rate to Meet Monthly Goal (gpm)	3,722	10,819	14,541
Monthly Total Recharge (AF)	220.40	887.20	1,107.60	Minimum Rate to Meet Monthly Goal (cfs)	8.3	24.1	32.4
Annual Total Recharge (AF)	220.40	1,137.20	1,357.60	Recharge to Meet Annual Goal (AF)	4,279.6	17,652.8	21,932.4
Monthly Recharge Goal (AF)	500	1,700	2,200	Minimum Rate to Meet Annual Goal (gpm)	2,998	12,367	15,365
Annual Recharge Goal (AF)	4,500	18,790	23,290	Minimum Rate to Meet Annual Goal (cfs)	6.7	27.6	34.2

Weekly Surface Water Diversion Report			
Weekly Diversion Summary (02/06/17 - 02/12/17)			
Weekly Total Diversion (AF)	42.16	Annual Total Diversion (AF) *	831.40
Weekly Average Flow (gpm)	1,363	Maximum Annual Diversion (AF) *	5,760.00
Weekly Average Flow (cfs)	3.04	Remaining Diversions (AF)	4,928.60

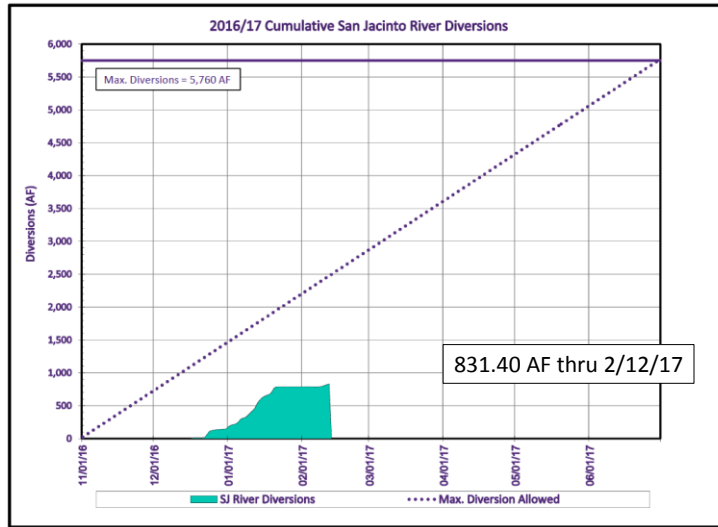
* Annual Total calculated from November 1 - June 30 each year based on state license to divert a maximum of 5,760 AF during this period.
Diversions are not permitted between July 1 - October 31 each year. The SBKR Bridge must be in place by July 1 each year.



Soboba Recharge to Date for 2017



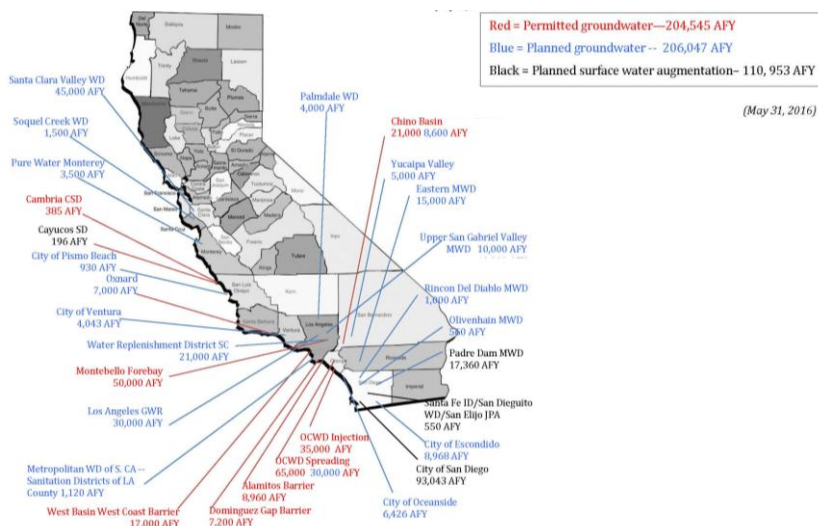
Grant River Diversions from 11/1/16 to 2/12/17



Enhanced Groundwater Replenishment Program Public Outreach



California Potable Reuse Projects



17 | emwd.org



Community Outreach

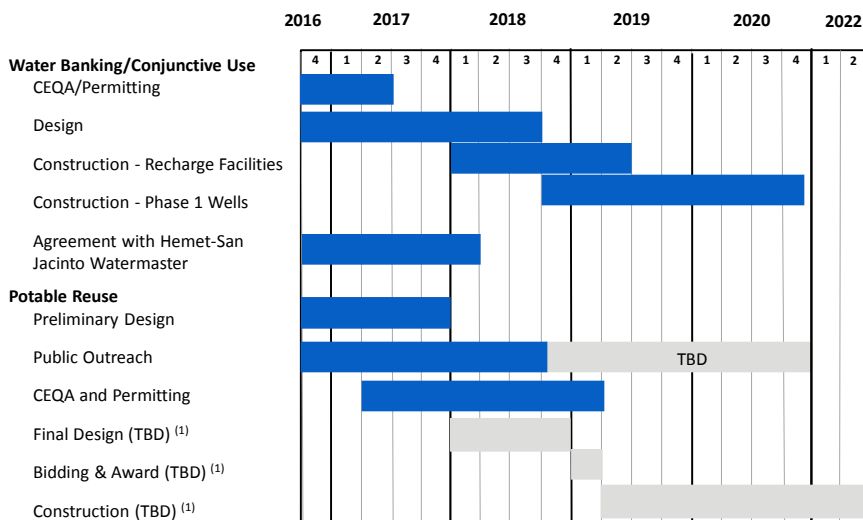
- Agency presentations
- Survey to gauge public awareness
- Individual meetings with stakeholders
- Community presentations
- Newsletters
- Website
- Social media posts
- Email updates
- Facility tours



18 | emwd.org



Enhanced Groundwater Replenishment Program Schedule



19 | emwd.org

⁽¹⁾ Project Delivery Method to be determined



Contact Information

Joe Mouawad, P.E.
Assistant General Manager of Planning,
Engineering and Construction
(951) 928-3777 Ext. 4463
mouawadj@emwd.org

Mike Nusser
Water Resources Planning Manager
(951) 928-3777 Ext. 4514
nusserm@emwd.org

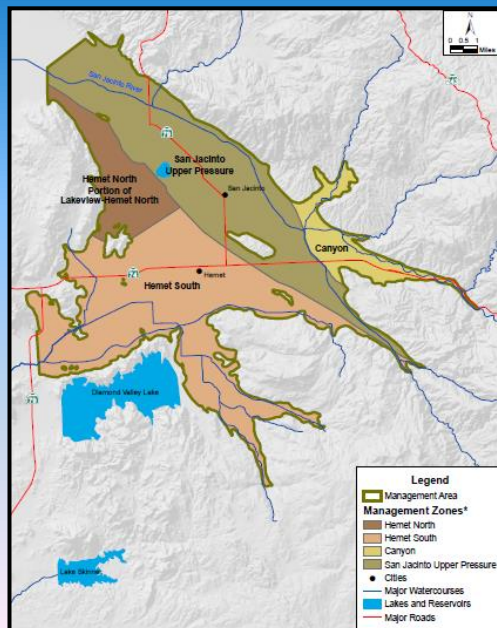


Hemet-San Jacinto Groundwater Management Area 2016 Annual Report

Watermaster TAC Meeting

February 13, 2017

Water Management Area



2016 Annual Report

Table of Contents

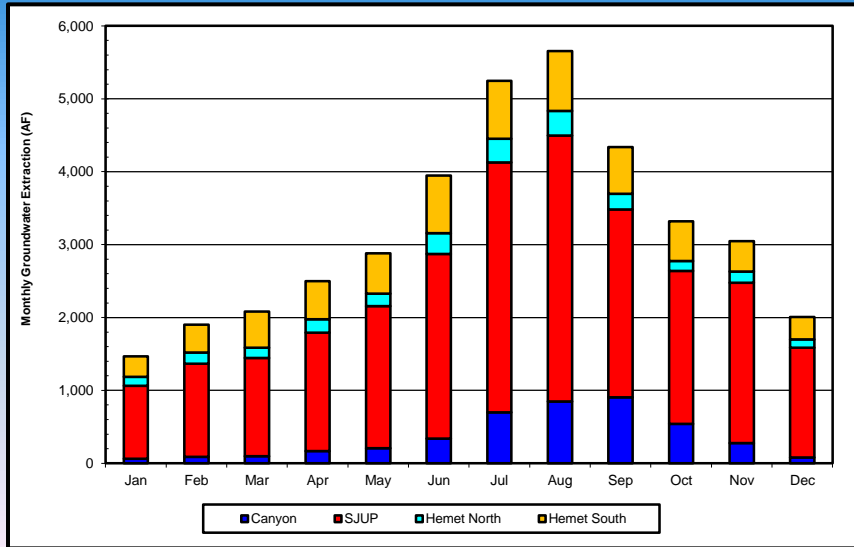
- Executive Summary
- Introduction
- Management Plan Activities
- Current Water Supply
- Projected Demands Update
- Monitoring, Data Compilation, and Evaluation
- 2016 Financial Considerations
- Tables/Figures/Maps
- Appendices
 - Board Minutes, and TAC Meeting Notes
 - Agreements/Resolutions/Task Orders
 - References

2016 Annual Demands

(By Management Zone/Source of Supply – AFY)

2016		EMWD	LHMWD	City of Hemet	City of San Jacinto	Private Property Owners	Soboba Tribe	Totals
Groundwater	Canyon	977	1,198	0	0	1,006	1,126	4,307
	SJUP	4,900	5,679	371	2,157	6,108	542	19,757
	Hemet North	0	0	0	0	2,344	0	2,344
	Hemet South	294	267	3,260	0	2,735	0	6,556
Groundwater From IRRP Wells		3,585	1,624	222	0	0	0	5,431
Total Groundwater		9,756	8,768	3,853	2,157	12,193	1,668	38,395
Surface Water - SJ River		0	859	0	0	0	0	859
In-lieu Recharge		0	0	0	0	0	0	0
Imported Water Treated by EMWD		1,545	0	0	0	0	0	1,545
Imported Raw Water		283	5,288	0	0	167	0	5,738
Recycled Water		0	0	0	0	8,866	0	8,866
In-Lieu Recycled Water		0	0	0	0	3,753	0	3,753
Totals		11,584	14,915	3,853	2,157	24,979	1,668	59,156

2016 Groundwater Production (By Management Zone - AF)



2016 Monitoring Program Results (By Management Zone)

Management Zone	Number of Wells Measured Spring	Number of Wells Measured Fall	Minimum Depth to Water (ft)	Maximum Depth to Water (ft)
Canyon	25	23	8.2	298.8
S.J. Upper Pressure	87	85	30.8	616.1
Hemet North (partial)	24	21	155.7	277.8
Hemet South	57	58	19.6	400.1
Totals	193	187	8.2	616.1

Management Zone	No. of Wells Sampled	TDS (mg/L)		NO ₃ -N (mg/L)	
		High	Low	High	Low
Canyon	17	1,100	190	17.0	< 0.10
S.J. Upper Pressure	49	5,100	150	37.0	< 0.10
Hemet North (partial)	24	1,000	340	9.0	< 0.10
Hemet South	27	1,400	170	42.0	< 0.10
Summary	117	5,100	150	42.0	<0.1

2016 Monitoring Program Other Related Information (River Diversion)

Agency	Diversion Points	Diversions (AF)
LHMWD	Lake Hemet	0
	South Fork	0
	North Fork	789
	Strawberry Creek	70
EMWD	Grant Avenue	515
	Total	1,374

2016 Budget & Revenues

Description	Original Budget	Revised Budget
Agreements (In-lieu Program)	\$ 156,000	\$ 156,000
EMWD Support (Groundwater Monitoring Program)	\$ 148,000	\$ 150,000
Gravel Pit Cleanup Project	\$ 49,000	\$ 0
Organization Operations & Management	\$ 223,750	\$ 223,750
Financial Support Services	\$ 9,000	\$ 9,000
Legal Counsel Services	\$ 30,000	\$ 30,000
Advisor Services	\$ 160,000	\$ 160,000
Administrative Support Services	\$ 12,000	\$ 12,000
Insurance; Office Supplies; and Other Direct Costs	\$ 7,500	\$ 7,500
Database/Mapping Application Maintenance	\$ 5,250	\$ 5,250
Additional Projects/Activities	\$ 310,000	\$ 10,000
Monitoring Program Enhancement Project	DWR	DWR
Construction of One Monitoring Well	\$ 300,000	\$ -
Develop Field Data Validation Application	\$ 10,000	\$ 10,000
Total Budget	\$ 886,750	\$ 539,750

	Adjusted Base Production Rights (AF)	Actual Productions * (AF)	Production subject to Assessment (AF)	Total Assessment (\$)
City of Hemet	5,199	3,631	2731	\$ 81,940
City of San Jacinto	3,383	2,157	1257	\$ 37,710
EMWD	8,758	6,171	4171	\$ 125,140
LHMWD	8,649	7,144	7144	\$ 214,320
Totals	25,989	19,103	15303	\$ 459,110

* Actual Production does not include IRRP Productions

2016 Unused Soboba Water & Carry-over Credits (as of December 31, 2016)

Agency	Pre 2012 Recharge Rights as of Dec. 31, 2016	* Total Unused SbT Imported Water as of Dec 31, 2016	Total Unused Adjusted BPR (AF) as of Dec 31, 2016	Totals as of Dec 31, 2016	Future MWD Deliveries to Cover Obligations
City of Hemet	0	5,799	6,274	12,072	1,186
City of San Jacinto	0	3,915	4,331	8,246	756
EMWD	4,694	673	11,905	17,272	2,039
LHMWD	0	4,222	3,568	7,790	2,069
Totals	4,694	14,609	26,078	45,380	6,050

* Total Unused Soboba Imported Water is corrected to include Soboba Tribe Golf Course Production between 2012-2015

BPR = Base Production Rights
SbT = Soboba Tribe

Recycled Water & In-lieu Program Activities

In-Lieu Program Participants	Pre 2016 Deliveries (AF)	2016 Recycled Water Deliveries (AF)	2016 In-lieu Deliveries with Subsidy (AF)	Cost for In-lieu Program for 2016
Scott Brothers Dairy	14,522	1,640	878	\$43,341
Rancho Casa Loma	25,257	4,216	2,875	\$142,578
Totals	39,779	5,856	3,753	\$185,919

Management Zone	Recycled Water Use (AF)
Canyon	0
S.J. Upper Pressure	6,776
Hemet North (partial)	2,596
Hemet South	3,247
Totals	12,619

Class B Participants Carry-Over Credits (as of December 31, 2016)

Legal Owner Name	Prorata Allocations	Total Production Below Allocations as of December 2015	2016 Production	Total Prod. Below Allocations as of Dec. 2016	Total Prod. Above Allocations as of Dec. 2016
Cordero Family Trust	1398	2141	509	3030	
Gh Dairy	104	42	149		2.5
Gless Trust Pt.	588	1087	77	1598	
Gless Family Trust	1505	2780	197	4088	
Olsen Robert D & Olsen Elva I.	14	7	8	13	
Olsen Citrus LLC	37	18	22	34	
Arlington Veterinary Laboratories Inc.	105	52	62	95	
Oostdam Peter G & Jacoba M & John P & Margie K.	259	572	97	734	
San Jacinto Fund LLC	596	1788	0	2384	
Record Randolph A & Record Anne M.	46	126	0	171	
Sybrandy Investment Co. LP	1182	2310	370	3122	
Boersma Eric & D Family Trust	195	798	167	826	
Curci San Jacinto Investors LLC	260	780	0	1040	

Class B Participants Carry-Over Credits (as of December 31, 2016) (Cont.)

Legal Owner Name	Prorata Allocations	Total Production Below Allocations as of December 2015	2016 Production	Total Prod. Below Allocations as of Dec. 2016	Total Prod. Above Allocations as of Dec. 2016
Nuevo Dev Co. LLC	151	453	0	604	
Security Title Insurance Co.	1	0	0	0	
Lauda Family Ltd Partnership	3299	1192	696	1045	
Lauda Bertrand & Lauda Erma J.	147	53	31	47	
Rancho Diamante Inv.	92	226	0	318	
Diamante Rancho	50	123	0	173	
San Jacinto Spice Ranch Inc.	265	726	0	991	
Scott Ag Property	1755	449	128	1198	
Vandam Donald Dick and Vandam Frances L.	531	798	121	1209	
Vandam Glen A and Vandam Jennifer A.	139	325	49	415	
Velde Children Trust & Pastime Lake Inv. (Combined)	357	115	359	114	

2016 Watermaster Related Meetings and Agreements

Technical Advisory Committee Meetings:

- February 8, 2016
- May 9, 2016
- August 8, 2016
- September 27, 2016 (Special)
- November 9, 2016
- November 10, 2016 (Special)
- November 14, 2016

Watermaster Board Meetings:

- February 22, 2016
- May 16, 2016
- August 22, 2016
- November 28, 2016

Watermaster Agreement(s):

- Hemet-San Jacinto Watermaster Support Services:
 - ✓ Task Order No. 8 – Water Resources Monitoring Program Support for 2016

2016 Watermaster Resolutions

- Resolution No. 9.2 – Setting the Administrative Assessment for 2017 at \$30 per AF
- Resolution No. 10.2 – Setting Adjusted Base Production Reduction for May 2017 – April 2018 at 7 percent

Proposed Recommendation

**Receive and File the 2016 Annual Report
with the Court after accommodating
comments from Technical Advisory
Committee**

Storage Change Estimates Spring 2015 to Spring 2016

**Watermaster TAC Meeting
February 13, 2017**

Sustainable Groundwater Management Act Requirement (Water Code Section 10720)

Watermaster shall provide the following information to the Department of Water Resource:

- **Groundwater elevation data;**
- **Aggregated groundwater extraction data;**
- **Surface water supply used for/available for use for groundwater recharge or in-lieu use;**
- **Total water use;**
- **Change in groundwater storage; and**
- **The annual report submitted to the Court.**

Watermaster Methodology

Use the 2014 San Jacinto Groundwater Flow Model (SJFM-2014) information

&

Water level data collected as part of the annual Monitoring Program

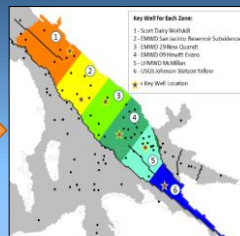
to

Calculate the storage change in the Hemet-San Jacinto Management Area

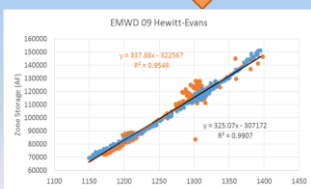
Procedure



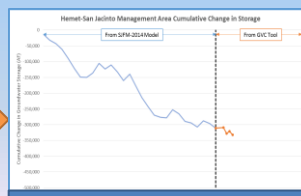
Groundwater Storage Volume Evaluated and 16 Subsections Established



Key Well(s) in Each Subsection Identified

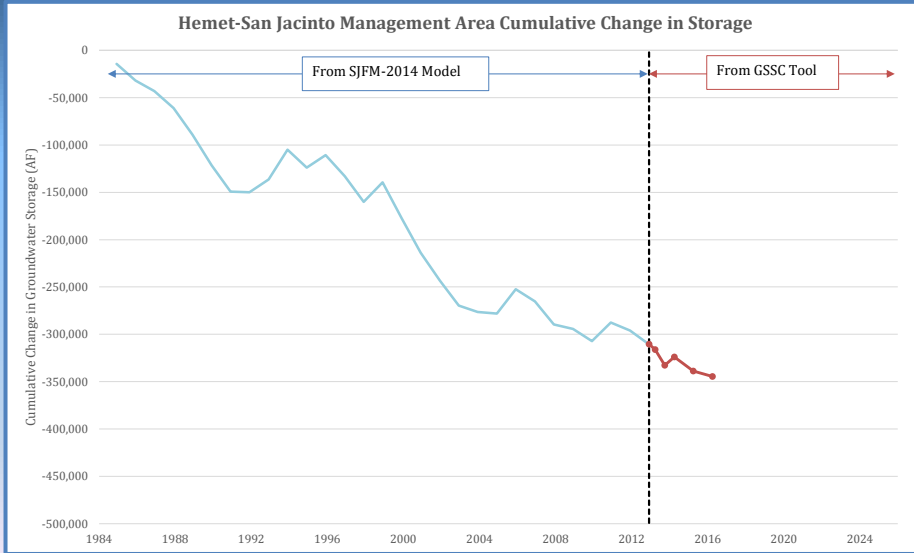


Develop Change in Storage Curves



Calculate Storage Change

Estimated Storage Changes 1984 - 2016



Estimated Storage Changes Using the Proposed Methodology

Area	Time Period	Estimated Storage Changes (AF)
Management Area	January 1984 - December 2012	- 310,458
Management Area	January 1984 - Spring 2016	- 344,451
Management Area	January 2013 - Spring 2016	- 33,993
Management Area	Spring 2015 - Spring 2016	- 5,717
San Jacinto Upper Pressure GMZ	Spring 2015 - Spring 2016	- 3,024
Hemet North GMZ	Spring 2015 - Spring 2016	- 172
Hemet South GMZ	Spring 2015 - Spring 2016	- 1,489
Canyon GMZ	Spring 2015 - Spring 2016	- 1,032

GMZ = Groundwater Management Zone

Proposed Recommendation

- **Include Storage Change estimates in the Annual Report filings with the Court.**
- **File the Annual Report (including Storage Changes) with DWR as part of the Sustainable Groundwater Management Act requirement.**

Questions...

Unused Soboba Imported Water Corrections

**Watermaster TAC Meeting
February 13, 2017**

Soboba Tribe Production

Year	Soboba Production Used in Previous Calculations	Soboba Production (including Golf Course Wells)	Additional SbT Production for 2012 to 2015 (*)
2012	1,144	1,820	320
2013	1,036	1,674	174
2014	1,165	1,689	189
2015	1,049	1,622	122
Totals	4,394	6,805	805

* Since 2012 Soboba Tribe Production from Soboba Golf Course Wells were not included in the Carry-over calculations. All of the Soboba Tribe Golf Course Production is now included in the Carry-over accounts calculations.

Corrections to the Unused Soboba Imported Water Due to Soboba Golf Course Productions

Agency	Unused Soboba Tribe Imported Water Corrections for 2012-2015
City of Hemet	-158
City of San Jacinto	-101
EMWD	-271
LHMWD	-275
Total	-805

Questions...