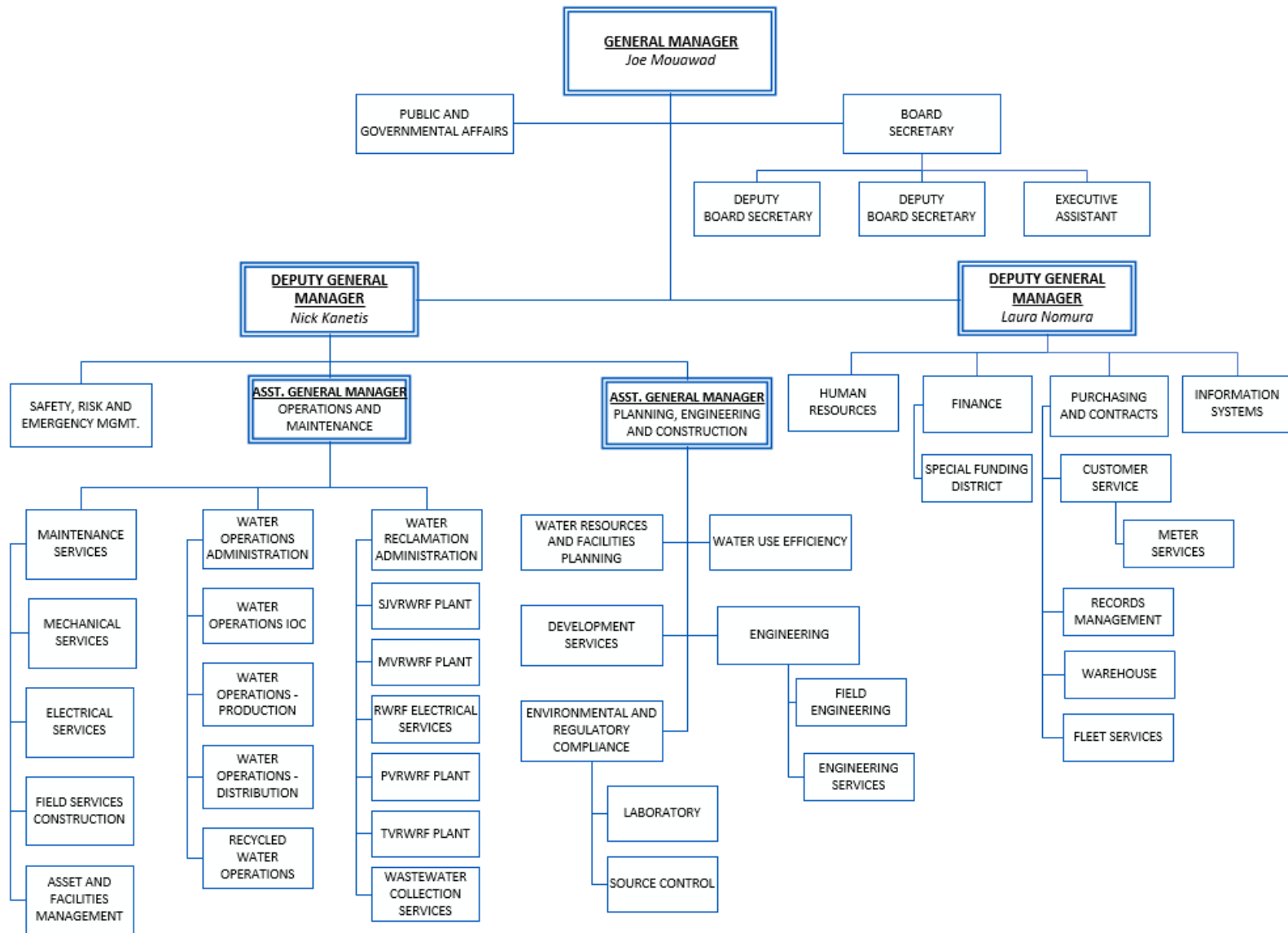
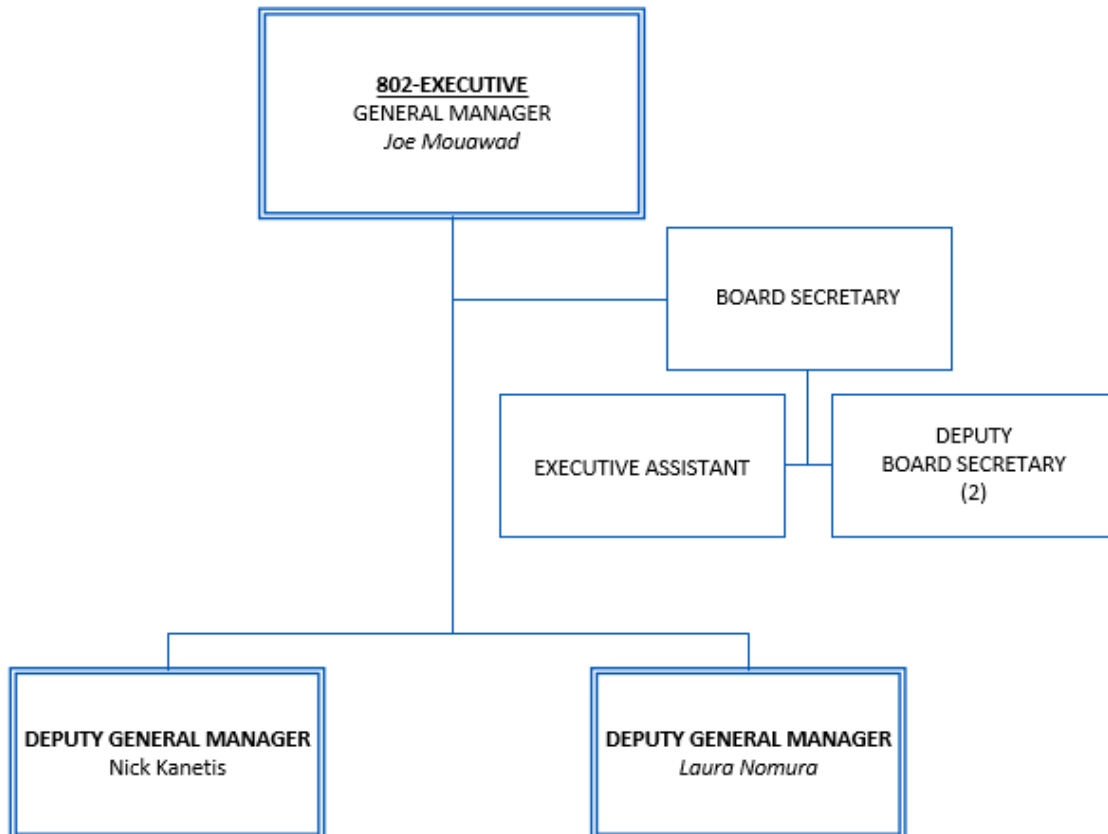


DISTRICT ORGANIZATIONAL CHART



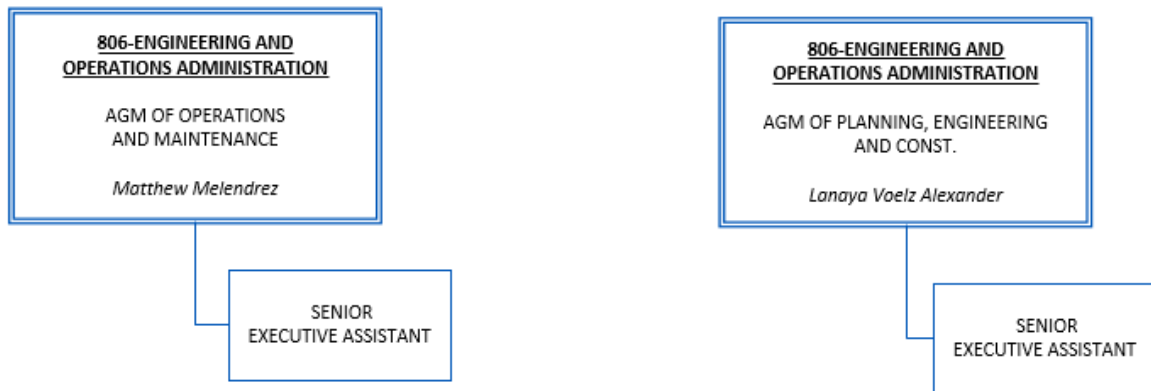
Organizational Chart Department 802



Department Staffing	Dept. 802
Headcount	7
Full Time Equivalent (FTE)	7

Engineering and Operations Administration Department

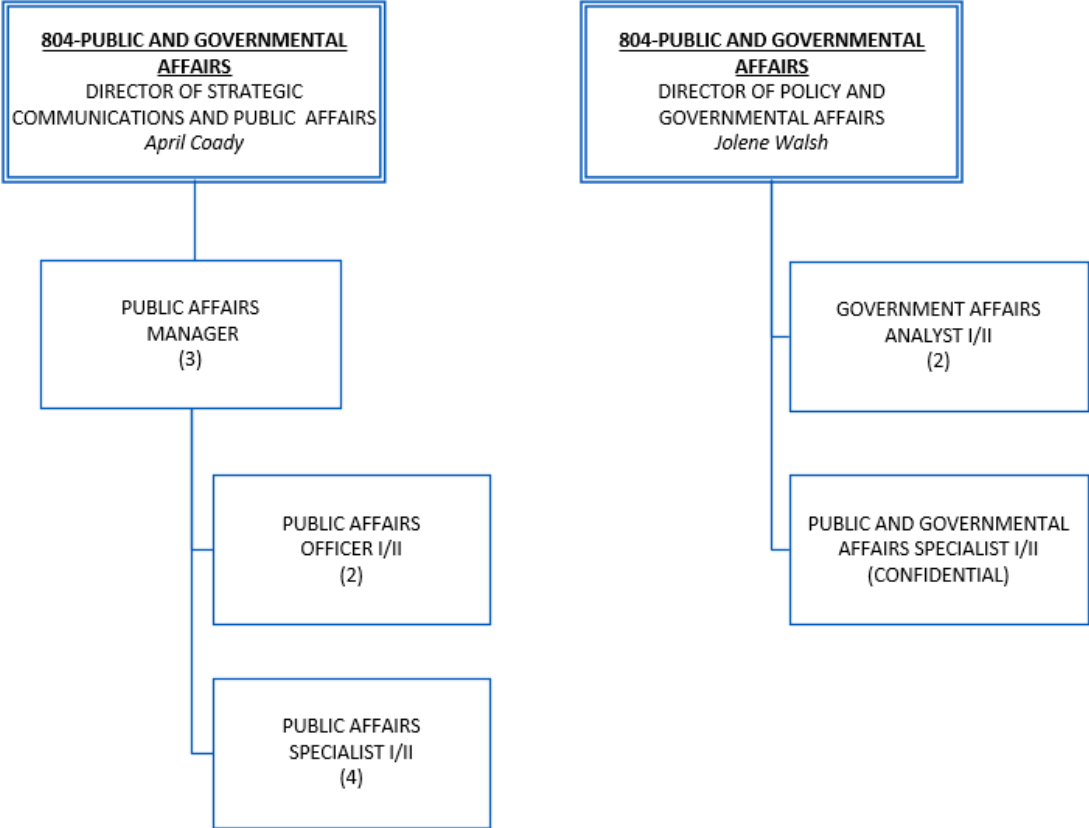
Organizational Chart Department 806



Department Staffing	Dept. 806
Headcount	4
Full Time Equivalent (FTE)	4

Public and Governmental Affairs Department

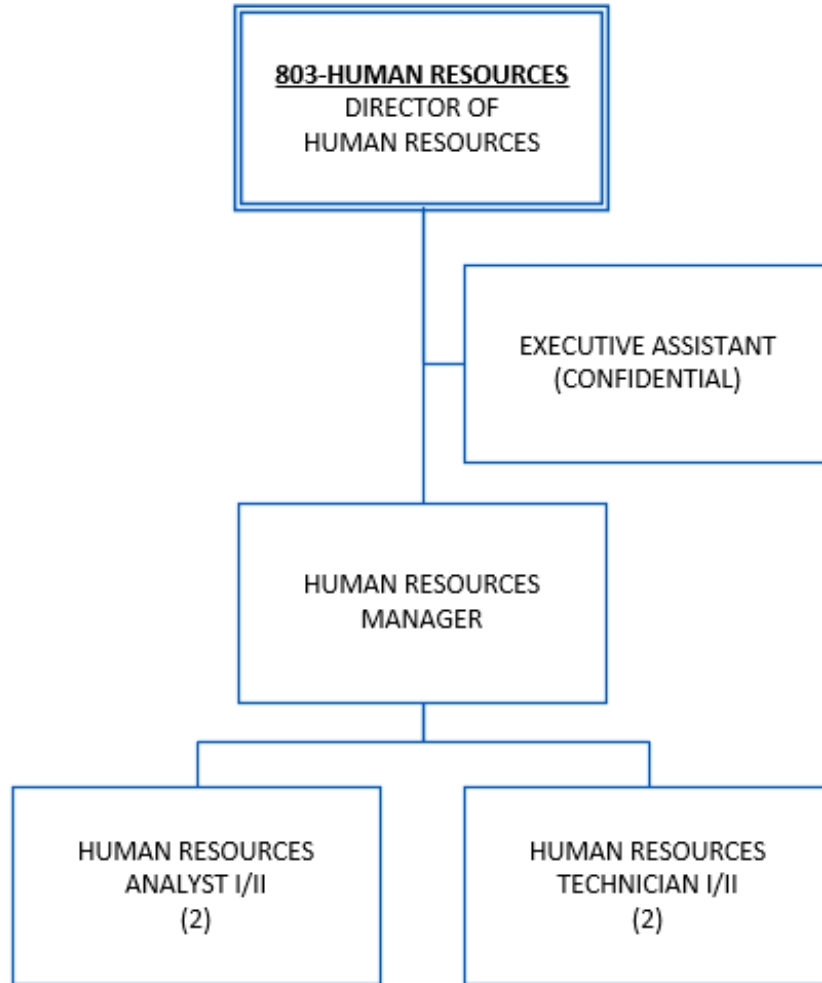
Organizational Chart Department 804



Department Staffing	Dept. 804
Headcount	14
Full Time Equivalent (FTE)	14

Human Resources Department

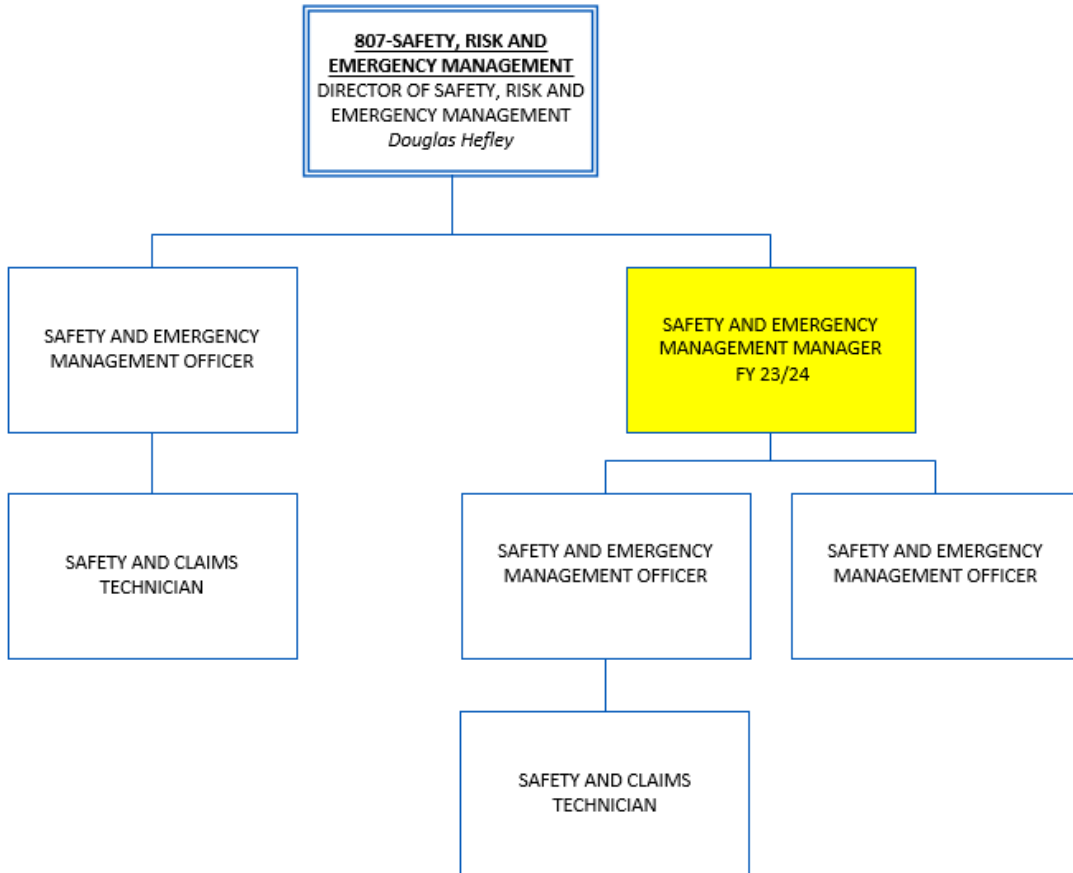
Organizational Chart Department 803



Department Staffing	Dept. 803
Headcount	7
Full Time Equivalent (FTE)	7

Safety, Risk and Emergency Management Department

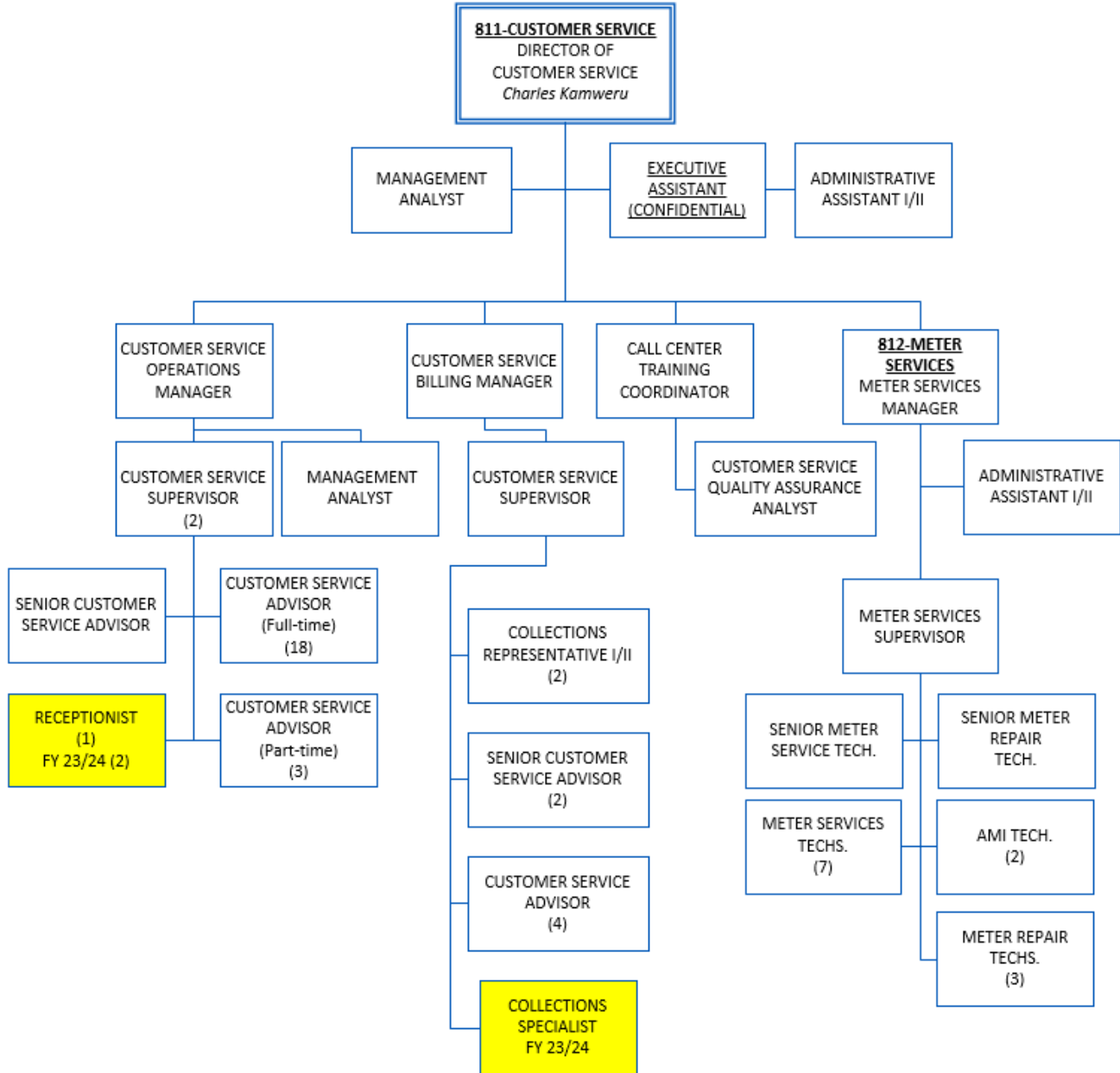
Organizational Chart Department 807



Department Staffing	Dept. 807
Headcount	6
Full Time Equivalent (FTE)	6
FY 2023-24 (+ 1 Position)	7
Revised Head Count/FTE	

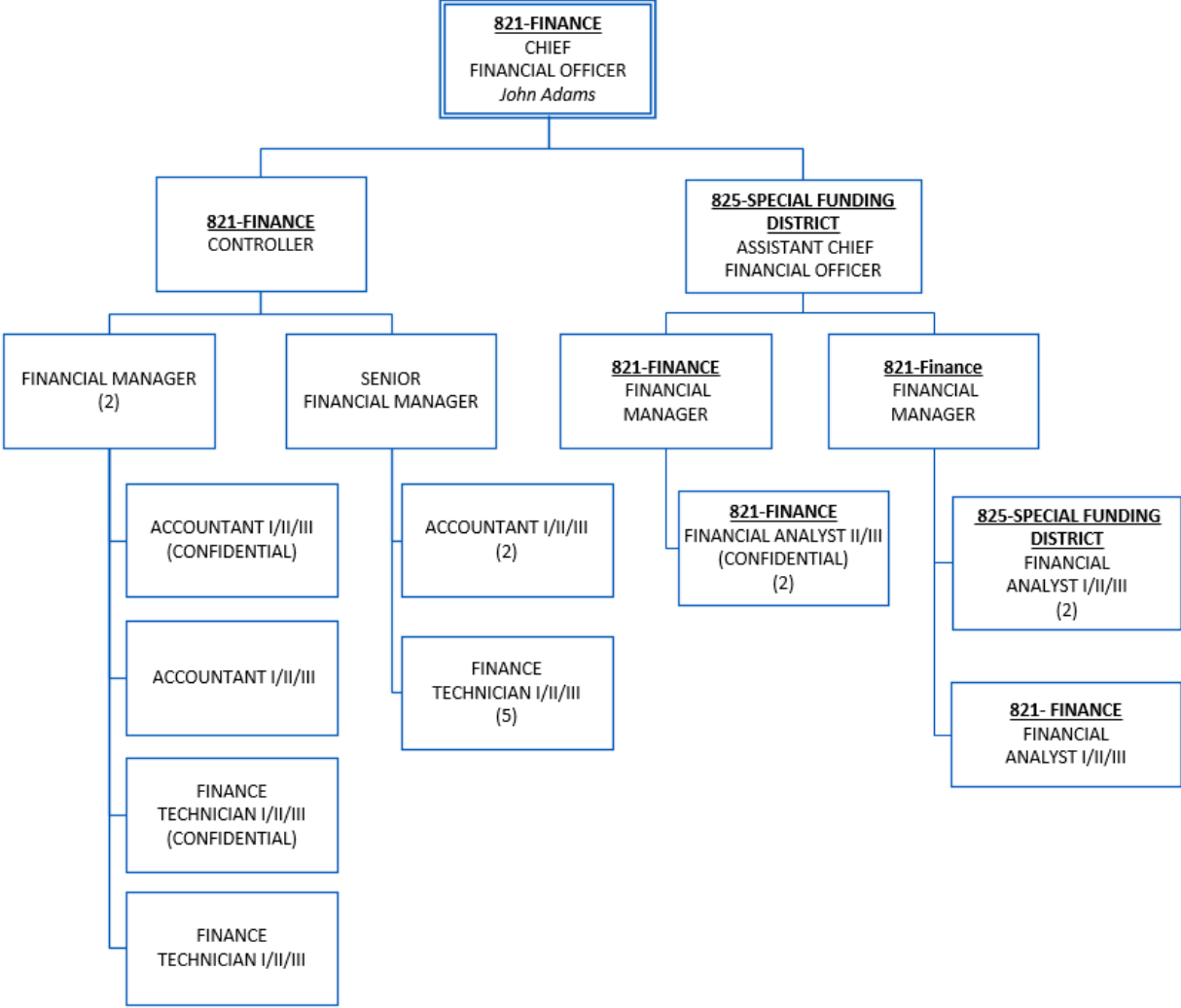
Customer Service and Meter Departments

Organizational Chart Departments 811 and 812



Department Staffing	Dept. 811	Dept. 812
Headcount	44.5	17
Full Time Equivalent (FTE)	44.5	17
FY 2023-24 (+ 3 Position) Revised Head Count/FTE	44.5	17

Organizational Chart Departments 821 and 825

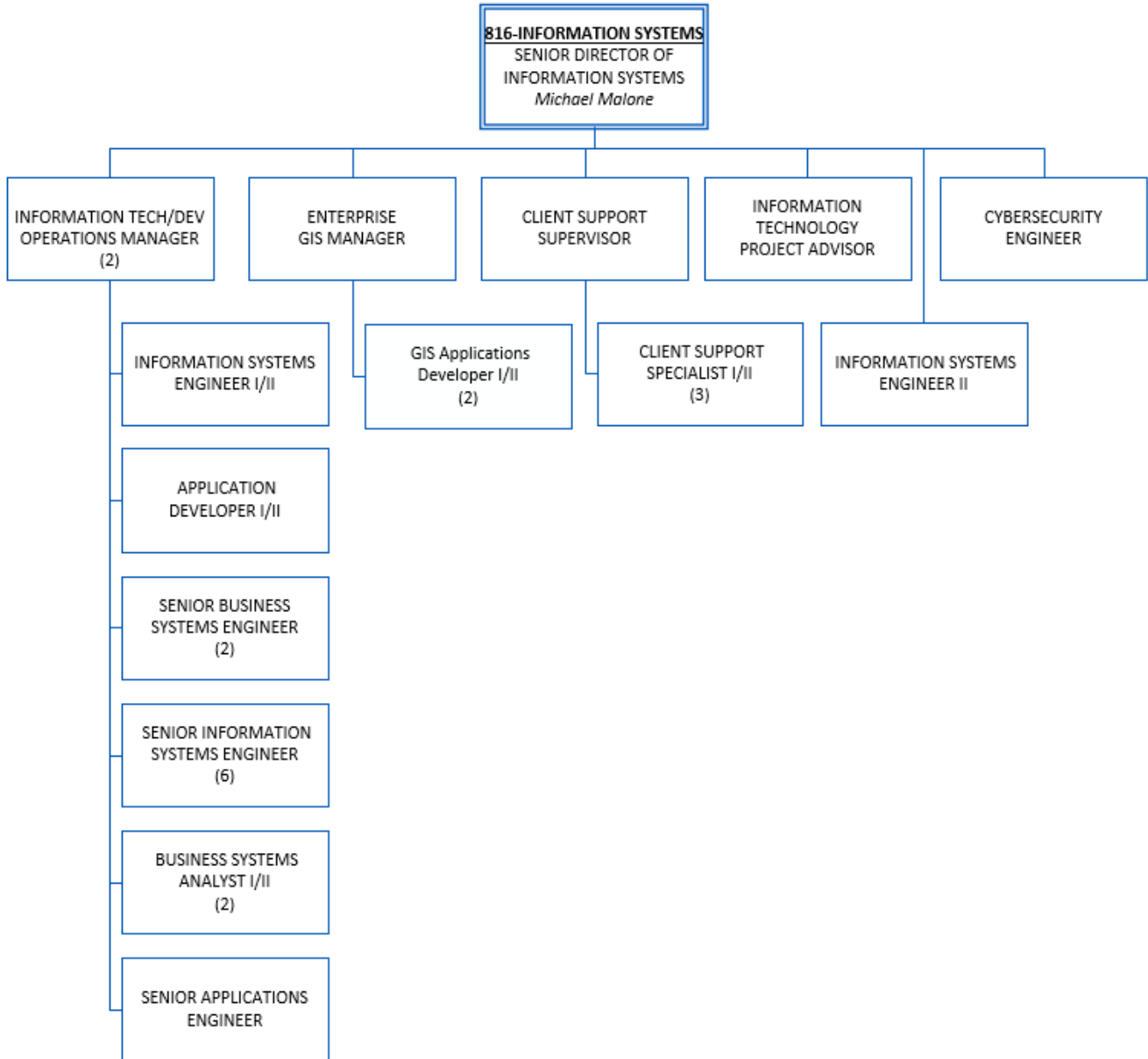


Department Staffing	Dept. 821	Dept. 825
Headcount	21	3
Full Time Equivalent (FTE)	21	3



Information Systems Department

Organizational Chart Department 816

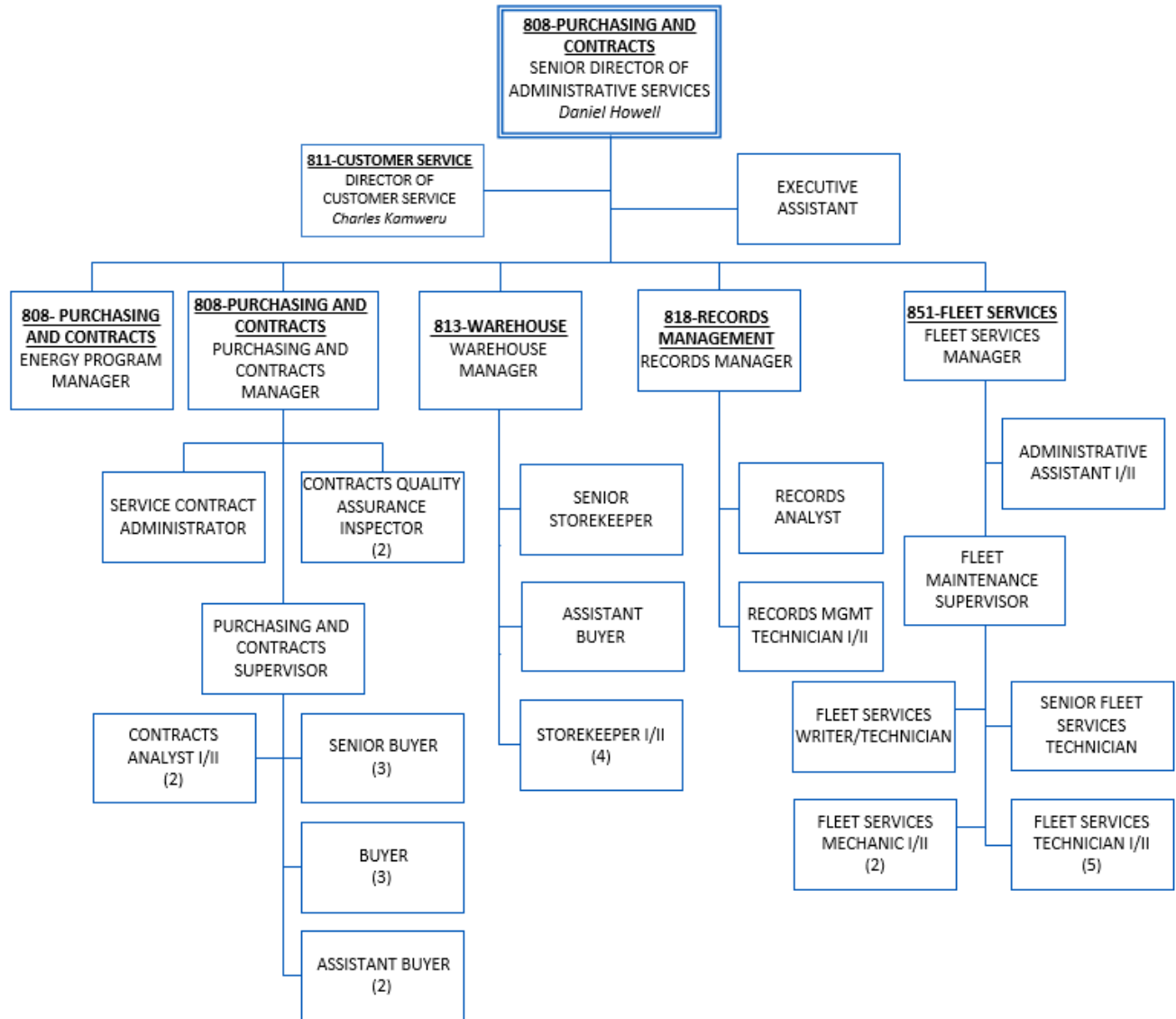


Department Staffing	Dept. 816
Headcount	26
Full Time Equivalent (FTE)	26
FY 2023-24 (- 1 Position) Revised Head Count/FTE	25
FY 2024-25 (- 1 Position) Revised Head Count/FTE	24

Purchasing and Contracts Department

Organizational Chart Departments 808, 811*, 813, 818, and 851

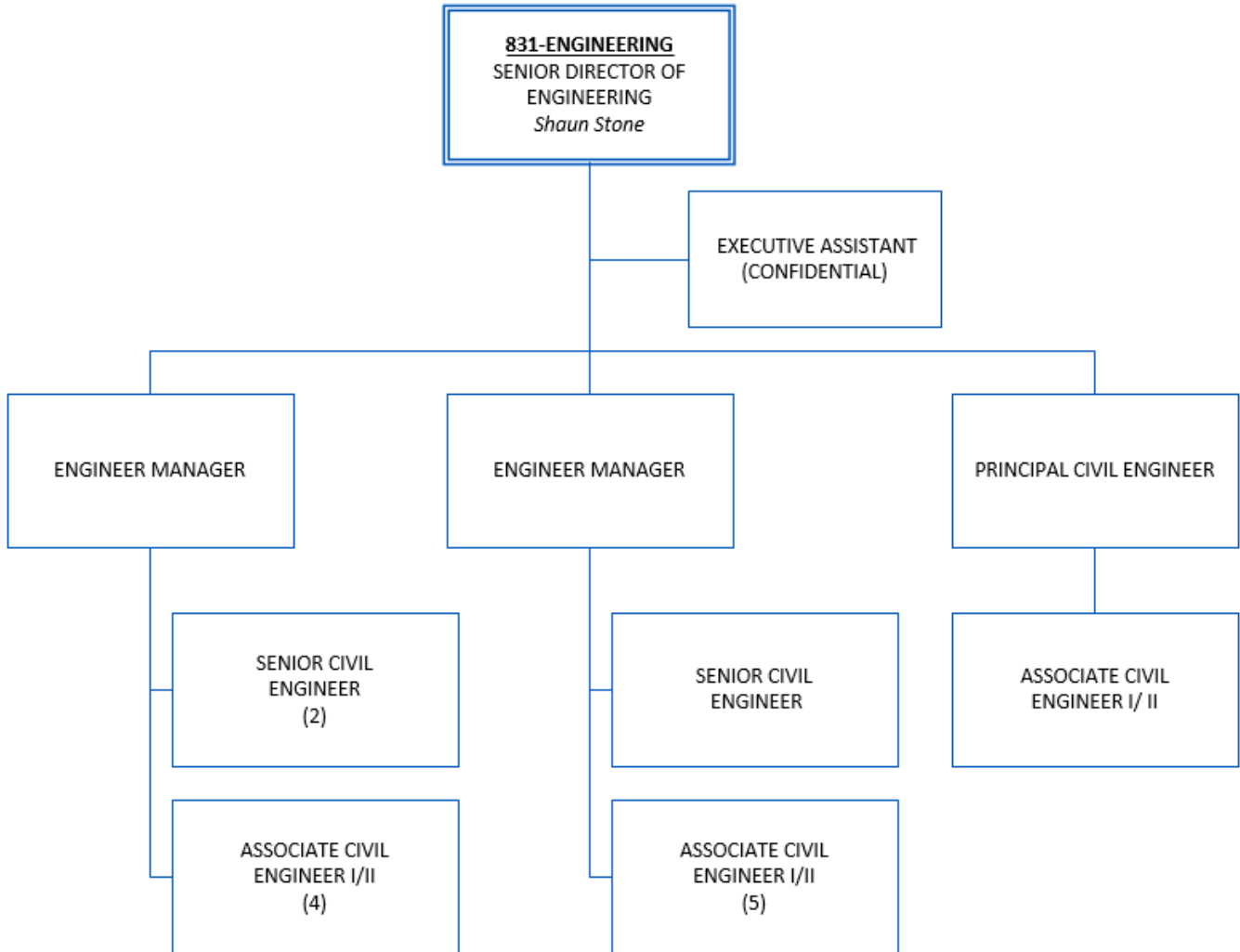
*Org. chart on separate sheet



Department Staffing	Dept. 808	Dept. 813	Dept. 818	Dept. 851
Headcount	18	7	3	12
Full Time Equivalent (FTE)	18	7	3	12

Engineering Department

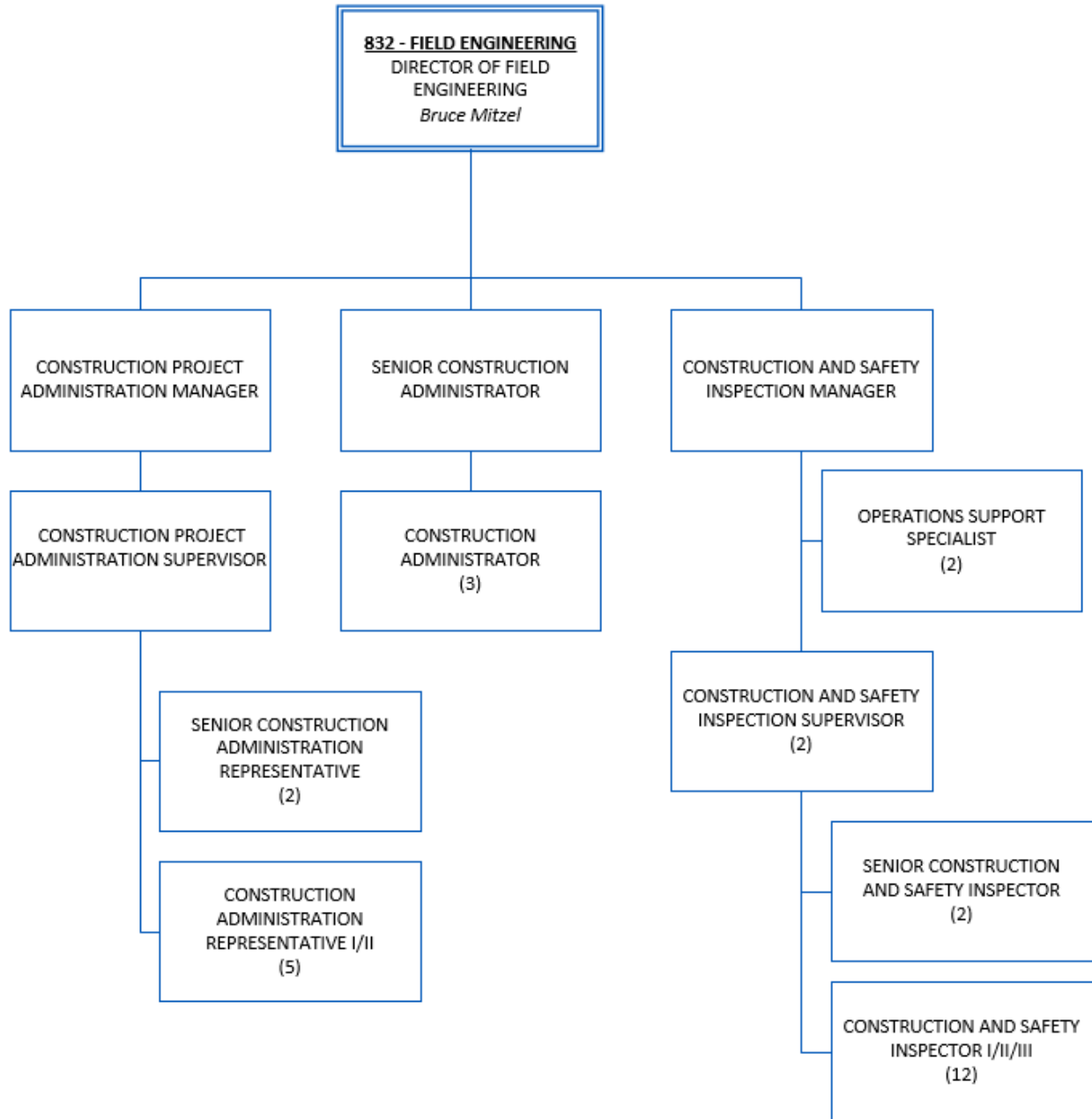
Organizational Chart Department 831



Department Staffing	Dept. 831
Headcount	18
Full Time Equivalent (FTE)	18

Field Engineering Department

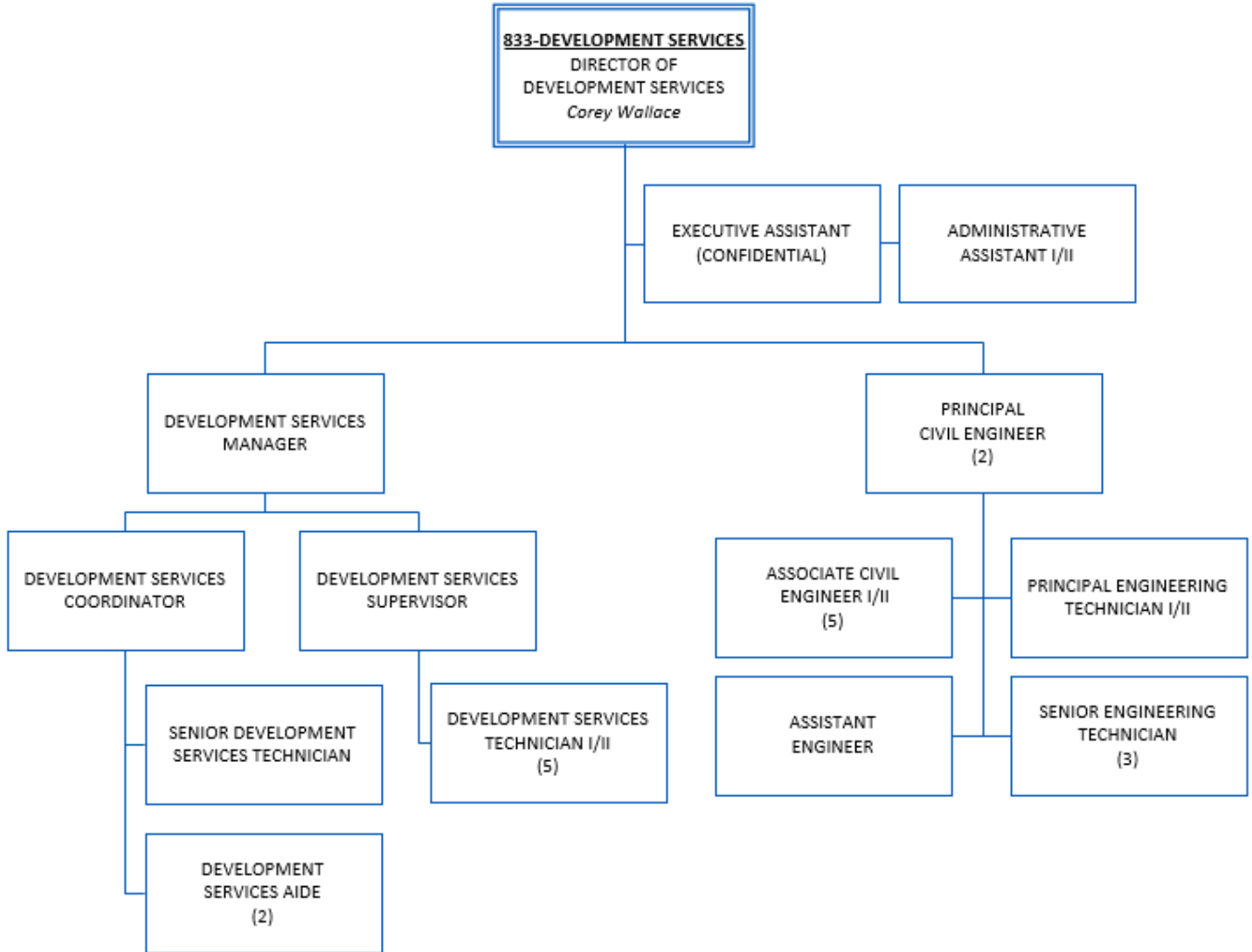
Organizational Chart Department 832



Department Staffing	Dept. 832
Headcount	33
Full Time Equivalent (FTE)	33

Development Services Department

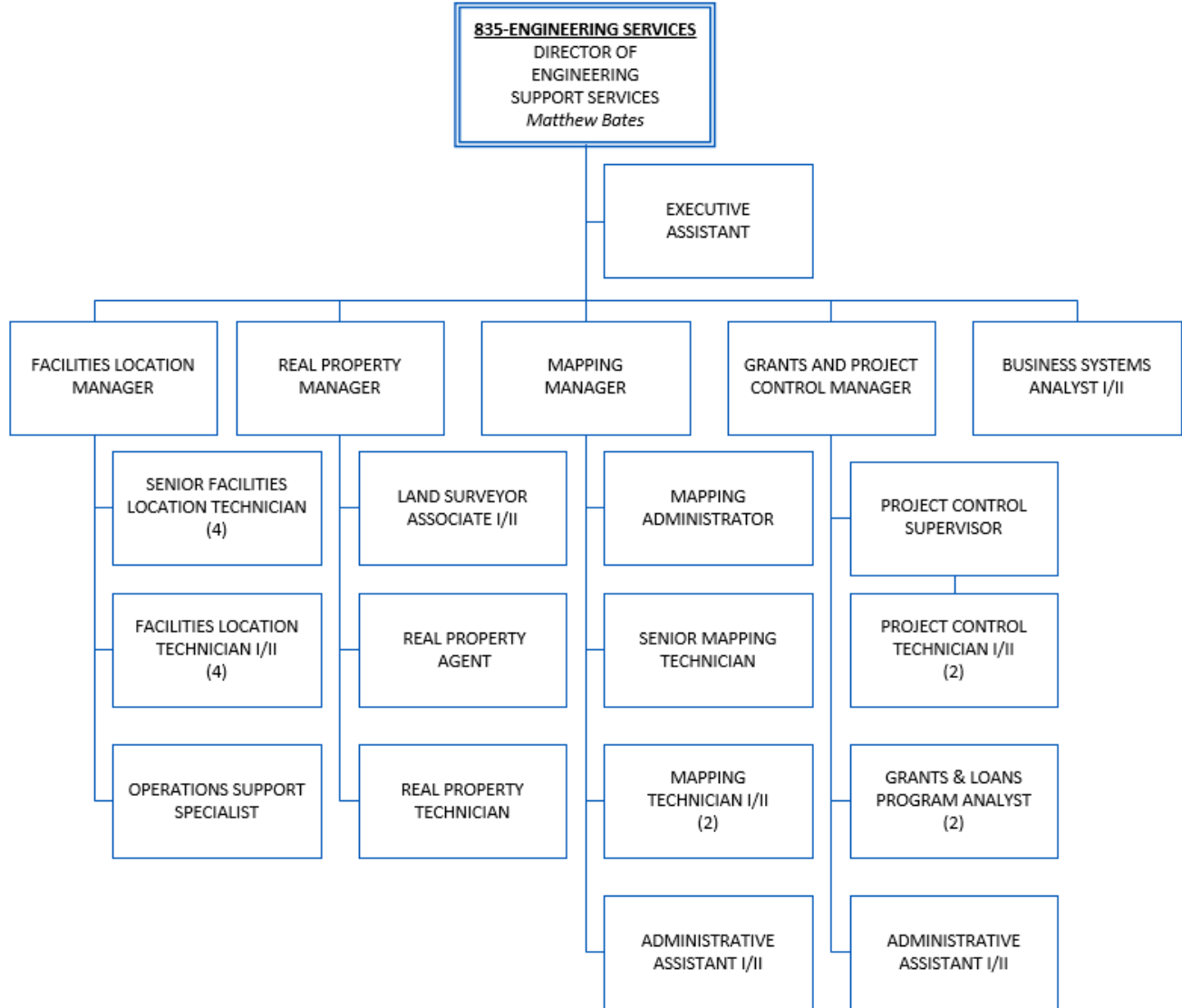
Organizational Chart Department 833



Department Staffing	Dept. 833
Headcount	26
Full Time Equivalent (FTE)	26

Engineering Services Department

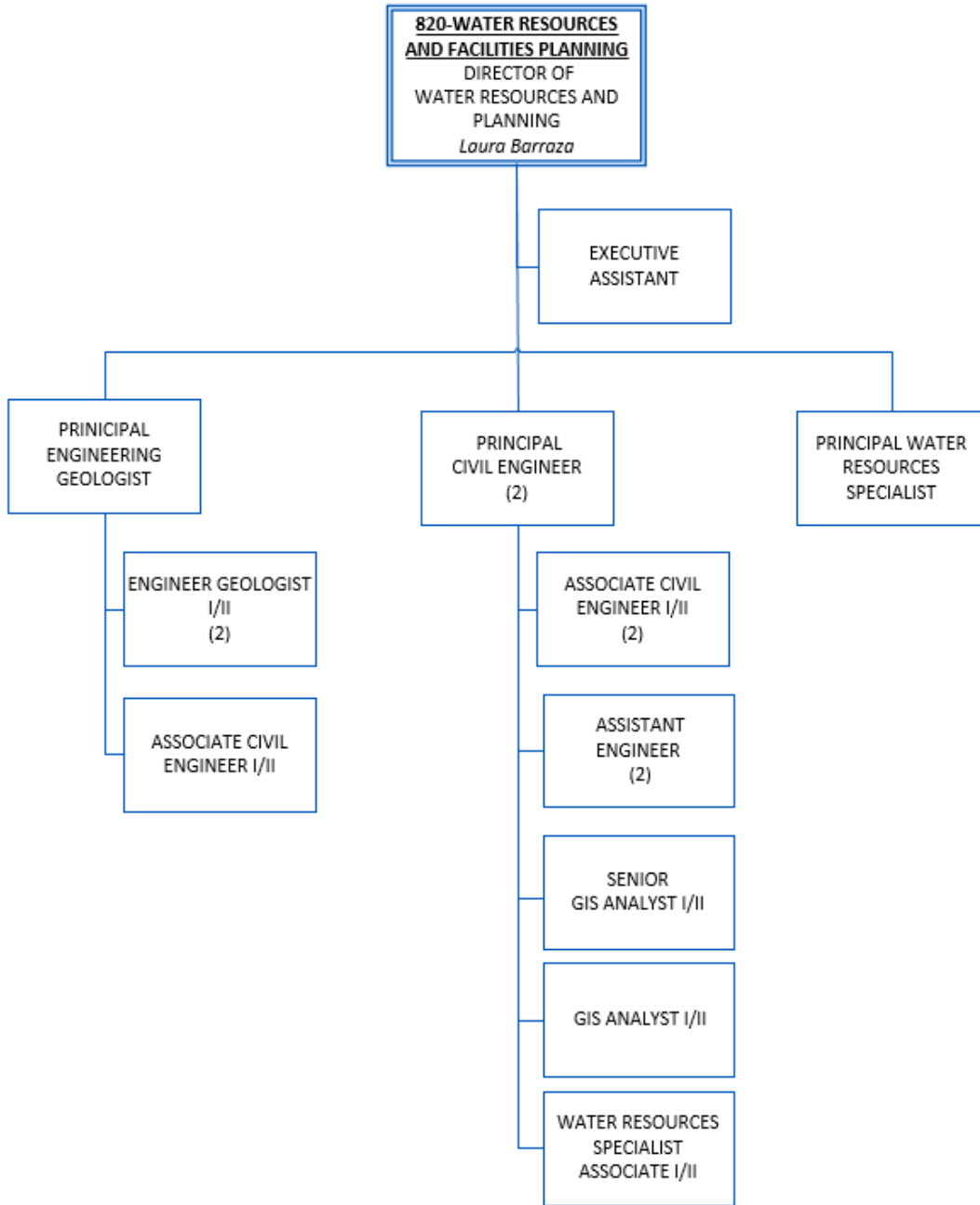
Organizational Chart Department 835



Department Staffing	Dept. 835
Headcount	30
Full Time Equivalent (FTE)	30

Water Resources and Facilities Planning Department

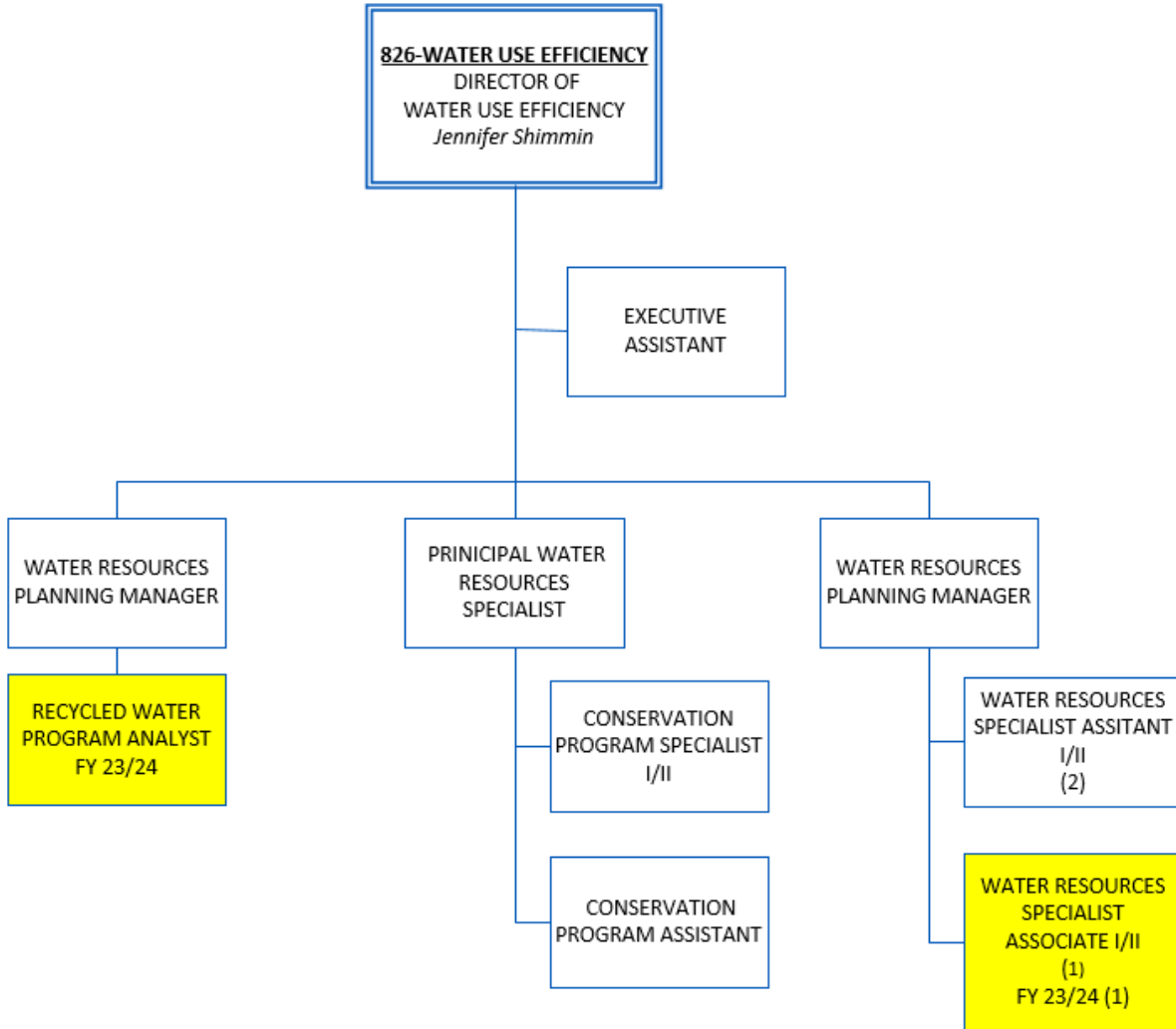
Organizational Chart Department 820



Department Staffing	Dept. 820
Headcount	16
Full Time Equivalent (FTE)	16

Water Use Efficiency Department

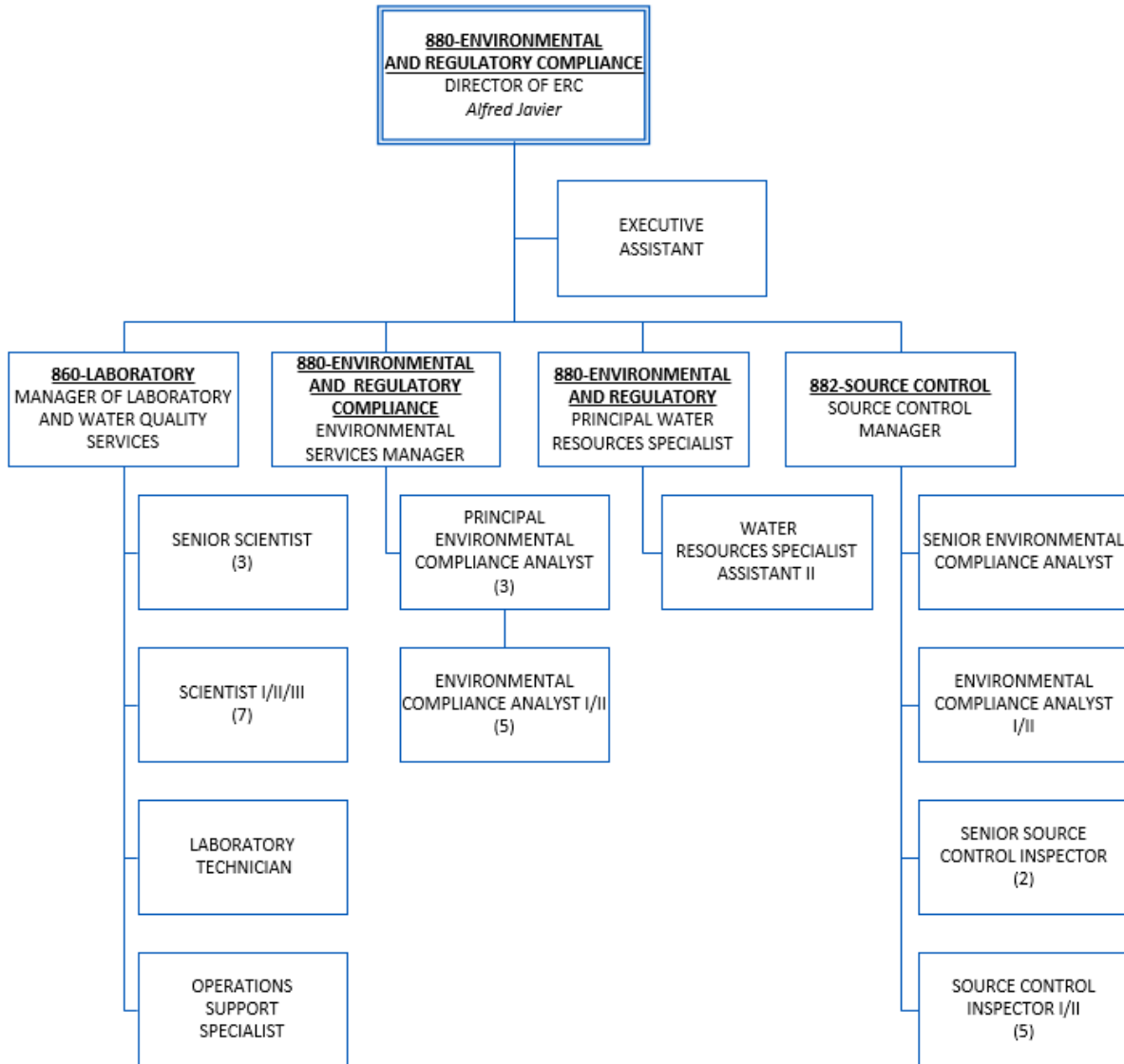
Organizational Chart Department 826



Department Staffing	Dept. 826
Headcount	10
Full Time Equivalent (FTE)	10
FY 2023-24 (+ 2 Position) Revised Head Count/FTE	12

Environmental and Regulatory Compliance Departments

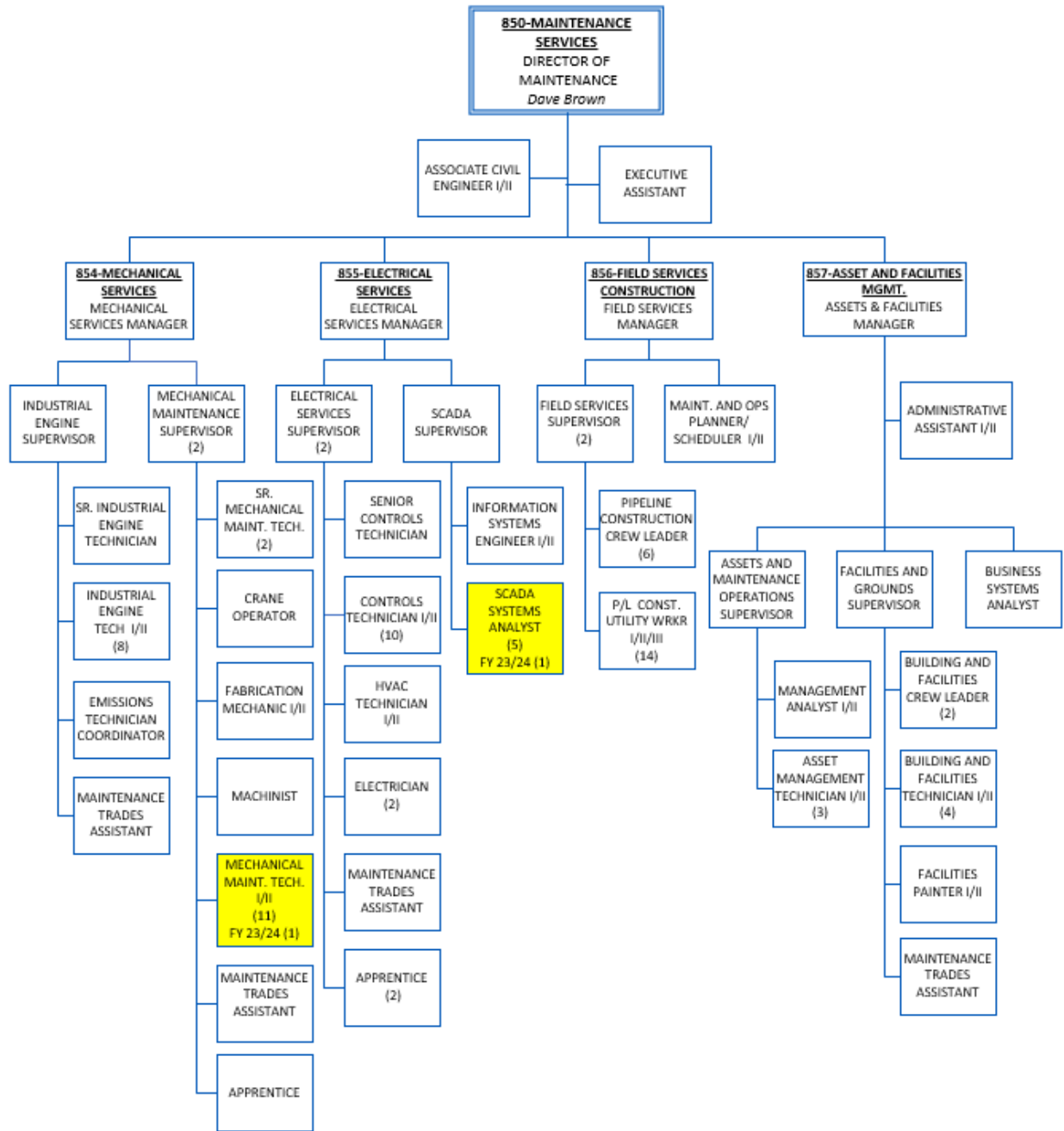
Organizational Chart Departments 860, 880, and 882



Department Staffing	Dept. 860	Dept. 880	Dept. 882
Headcount	13	13	10
Full Time Equivalent (FTE)	13	13	10

Maintenance Services Departments

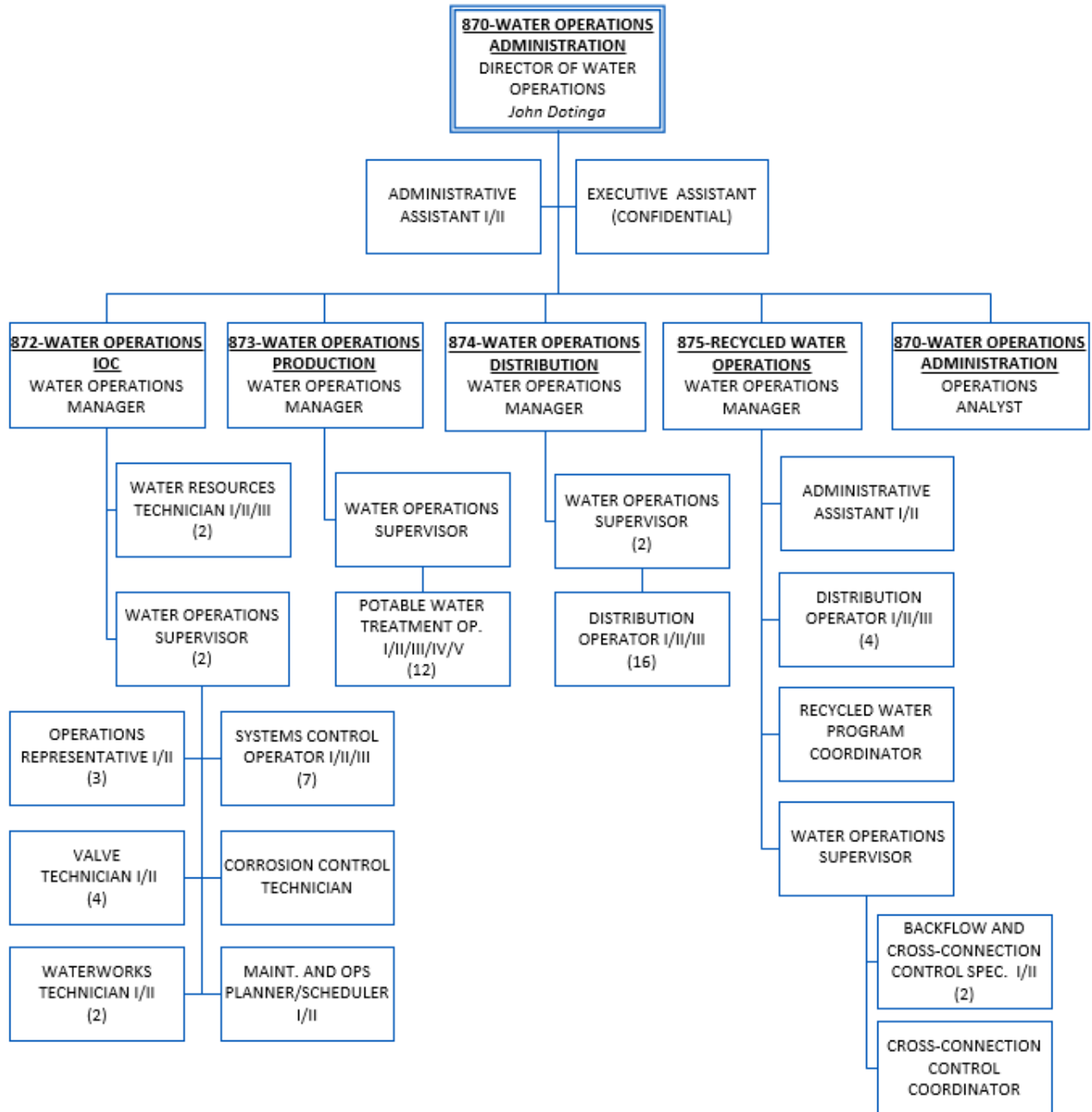
Organizational Chart Departments 850, 854, 855, 856, and 857



Department Staffing	Dept. 850	Dept. 854	Dept. 855	Dept. 856	Dept. 857
Headcount	3	33	27	24	17
Full Time Equivalent (FTE)	3	33	27	24	17
FY 2023-24 (+2 Position) Revised Head Count/FTE	3	34	28	24	17

Water Operations Departments

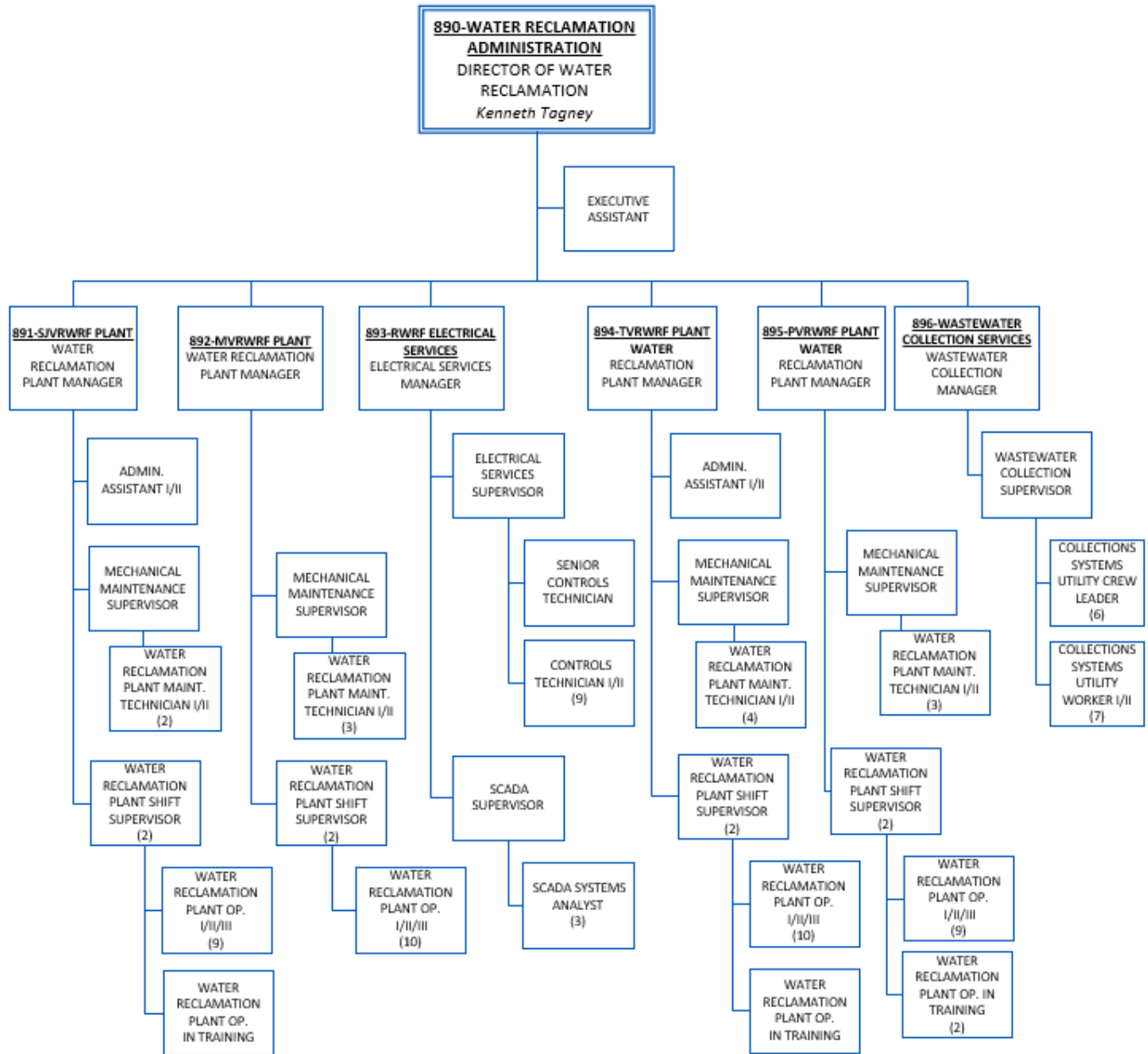
Organizational Chart Departments 870, 872, 873, 874, and 875



Department Staffing	Dept. 870	Dept. 872	Dept. 873	Dept. 874	Dept. 875
Headcount	4	23	14	19	11
Full Time Equivalent (FTE)	4	23	14	19	11

Water Reclamation Department

Organizational Chart Departments 890, 891, 892, 893, 894, 895, and 896



Department Staffing	Dept. 890	Dept. 891	Dept. 892	Dept. 893	Dept. 894	Dept. 895	Dept. 896
Headcount	2	17	17	16	20	18	15
Full Time Equivalent (FTE)	2	17	17	16	20	18	15