

**MATERIAL LIST** (ALL MATERIALS TO BE APPROVED BY EMWD)

ITEM	QTY	DESCRIPTION
①	1 EA	FLANGED PRESSURE REGULATOR W/(4) FOUR-PORT BONNET
②	2 EA	F X VICTAULIC SPOOL (CUT TO FIT)
③	1 EA	VICTAULIC COUPLING
④	2 EA	F X F 90° ELBOW
⑤	3 EA	F X F BUTTERFLY VALVE
⑥	2 EA	FLANGED TEE STEEL OR D.I. ( RUN SIZE SAME AS MAIN REGULATOR NO. 1)
⑦	2 EA	STAINLESS STEEL BALL VALVE W/CLOSE NIPPLE (SIZE AS REQUIRED)
⑧	2 EA	COPPER OR BRASS PIPE (SIZE AS REQUIRED)
⑨	2 EA	45° COPPER OR BRASS ELBOW W/CLOSE NIPPLE (SIZE AS REQUIRED)
⑩	1 EA	THREADED GLOBE DIRECT-ACTING PRESSURE REGULATOR W/UNION (SIZE AS REQUIRED)
⑪	2 EA	F X F CML&P STEEL OR D.I. PIPE (MIN 8" I.D.)
⑫	2 EA	F X F REDUCER (SIZE AS REQUIRED)
⑬	4 EA	F X F CML&P STEEL OR D.I. PIPE SPOOL (SIZED AS REQUIRED NO. 1 REG.)
⑭	...	#4 REBAR GR 60 12" O.C. EA. WAY
⑮	...	PREFORMED EXPANSION PAPER PER ASTM 1751
⑯	1 EA	CONCRETE SLAB (LENGTH= 12" LARGER AND WIDTH= 12" LARGER THAN ENCLOSURE )
⑰	1 EA	COPPER OR BRASS UNION (SIZE AS REQUIRED)
⑱	2 EA	TWO PIECE SPLIT STEEL ENCLOSURE
⑲	2 EA	THREADED X F CML&P STEEL OR D.I. PIPE SPOOL (SIZED AS REQUIRED NO. 10)
⑳	2 EA	STEEL OR D.I. COMPANION FLANGE (SIZE AS REQUIRED)

**REGULATOR TABLE**

MAIN REGULATOR NO. 1 (SIZE)	BY-PASS REGULATOR NO. 10 (SIZE)
4"	2" Direct-Acting Reg.
6"	2" Direct-Acting Reg.

**PRESSURE REGULATOR**

SIZE	RECOMMENDED FLOW (HEAD LOSS VARIES)
2"	15 GPM - 210 GPM
4"	50 GPM - 800 GPM
6"	115 GPM - 1800 GPM

REVISIONS				APPROVALS		
NO.	DATE	INITIAL	DESCRIPTION	APP'D	DATE	
①	3/10/22	GS	UPDATED TITLE BLOCK, LOGO, LINE WORK, FONT, REG. CONFIG. ADDED SECOND SHEET FOR PLACEMENT DETAILS AND NOTES	AGA	3/10/22	

REFERENCES: SUPERCEDES B-368

FILE I.D.: \kauai\eng\std dwgs\B-932.dgn

SCALE: NONE

DRAWN BY: CM

DESIGN	INITIAL	DATE
DESIGN	CM	7/14/05
CONSTRUCTION		
INSPECTION	CD	7/14/05
OPERATIONS	KG	7/15/05
SUBMITTED	VJB	7/18/05

RECOMMENDED \_\_\_\_\_

DIRECTOR OF ENGINEERING \_\_\_\_\_ DATE \_\_\_\_\_



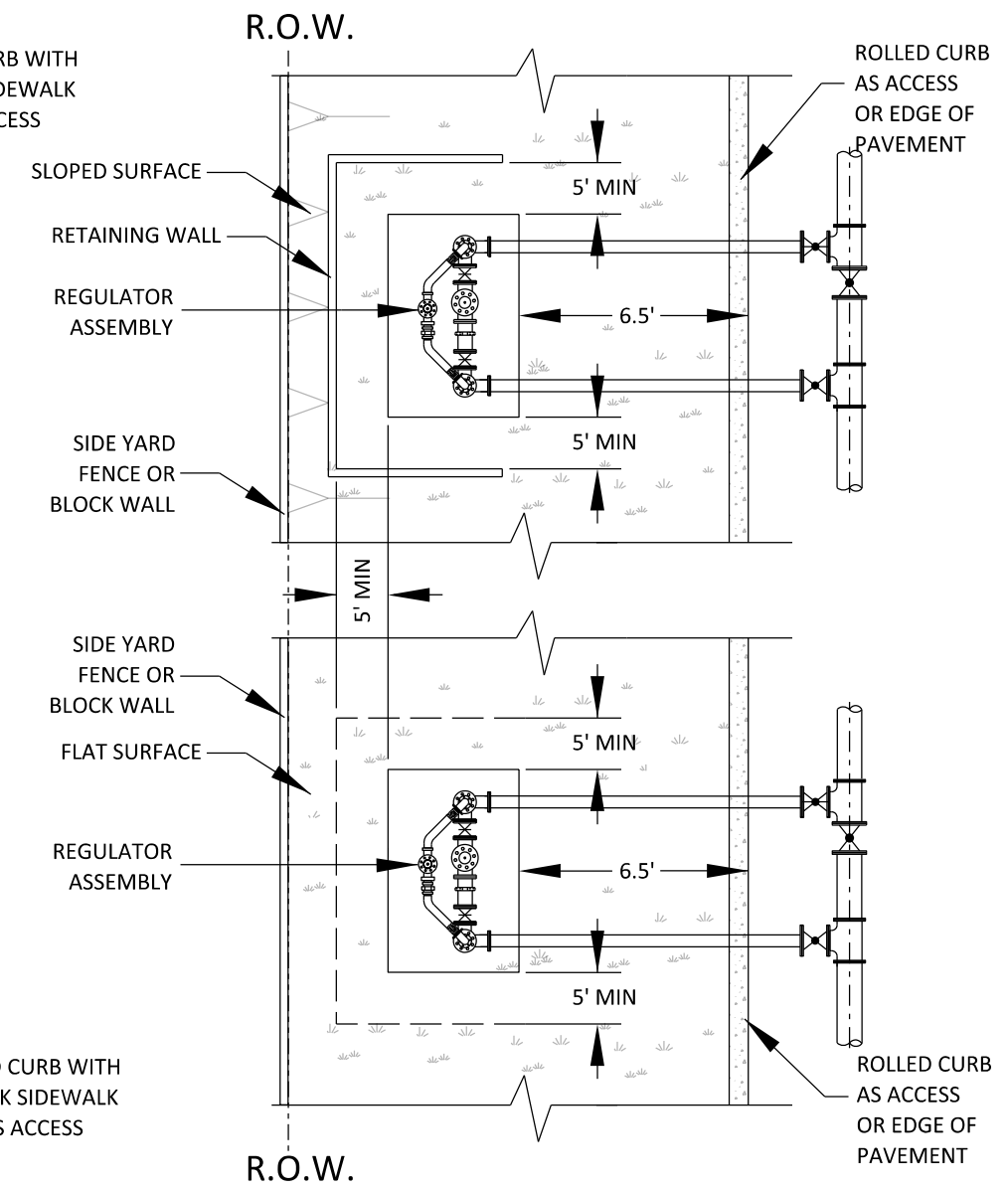
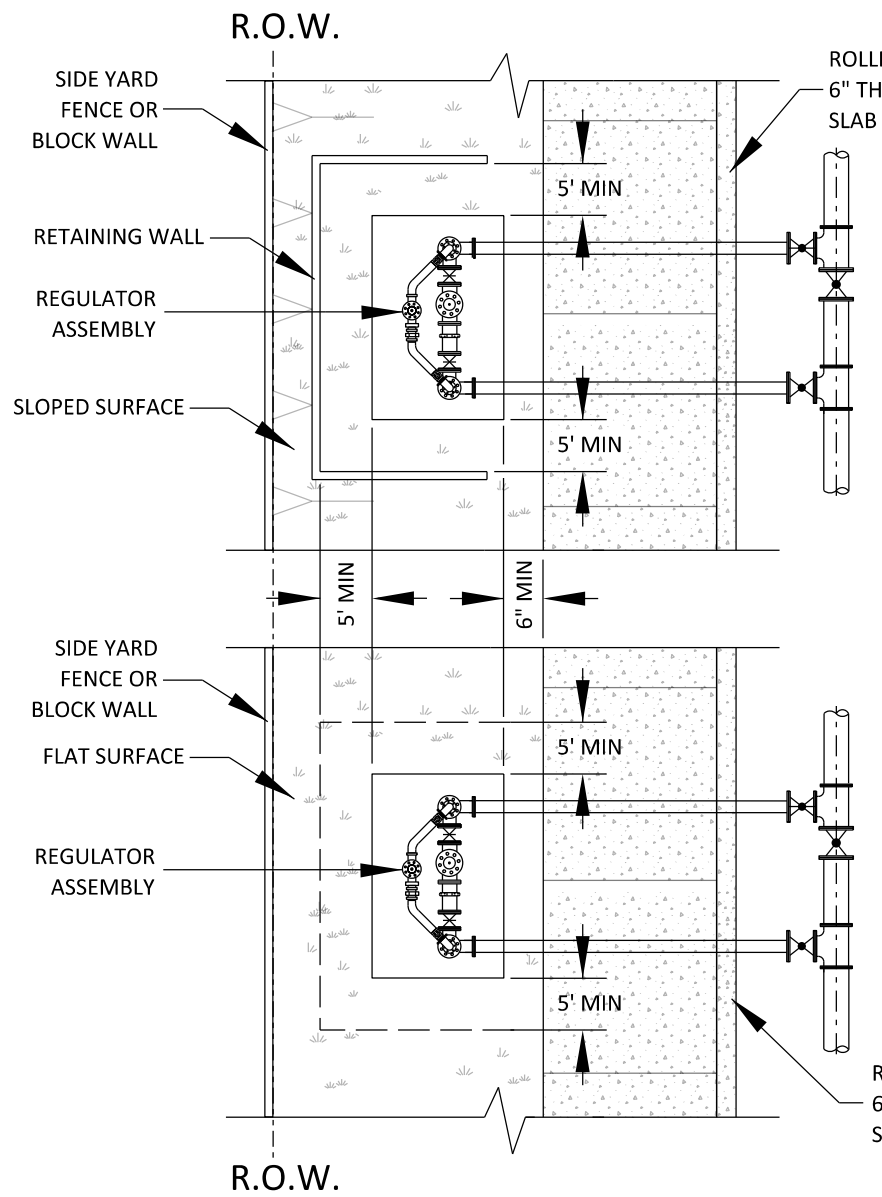
EASTERN MUNICIPAL WATER DISTRICT  
**STANDARD DRAWING**

**4" & 6" PRESSURE REGULATOR ABOVE GROUND INSTALLATION**

APPROVED *Charlie Bachmann* 10/11/05  
ASSISTANT GENERAL MANAGER DATE

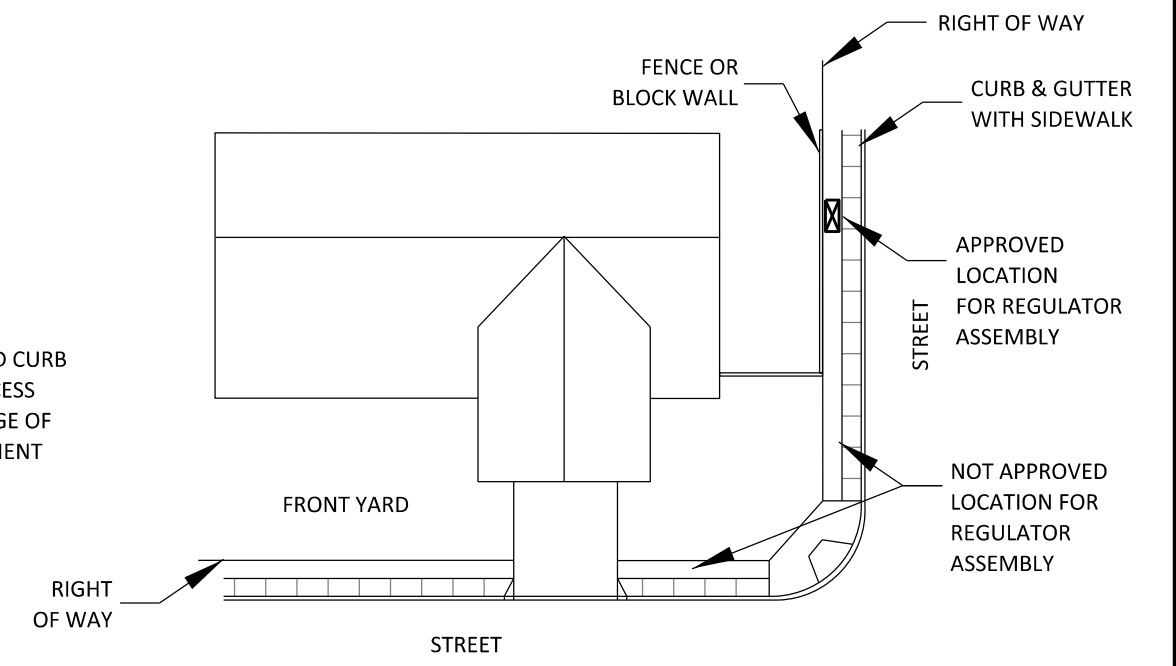
SHEET 1 of 2

**B-932**



**NOTES:**

1. PRESSURE REGULATOR SHALL BE MIN. 12" ABOVE CONCRETE PAD.
2. BELOW GROUND INSTALLATION OF PRESS. REG. TO BE ALLOWED ONLY WHEN ABOVE GROUND ASSEMBLY IS NOT PERMITTED BY THE GOVERNING AGENCY.
3. IN AREAS PRONE TO FREEZING, BYPASS PIPING SHALL BE WRAPPED WITH INSULATING TAPE.
4. ALL CML&C PIPE TO MEET EMWD SPECIFICATION 15061.
5. TEES OR CONNECTIONS SHALL NOT BE ALLOWED BETWEEN EMWD RSGV AND PRESSURE REGULATOR.
6. ENCLOSURE MANUFACTURERS, OR APPROVED EQUAL:
  - A. BACKFLOW PREVENTION DEVICE ENCLOSURE, PHOENIX, AZ.
  - B. LE MEUR WELDING & MANUFACTURING, WILMINGTON, CA.
1. 7. EMWD O&M MAY REQUIRE A VERTICAL FLOW METER ON INLET PIPING. INSTALL AN EQUAL LENGTH SPOOL ON OUTLET PIPING.
1. 8. PRESSURE REGULATOR ASSEMBLY SHALL NOT EXCEED 5' IN HEIGHT.
9. INSTALLATION LOCATION MAY REQUIRE BOLLARDS. BOLLARDS TO BE INSTALLED AT THE DIRECTION OF THE EMWD ENGINEER AND/OR EMWD INSPECTOR PER B-665.
1. 10. MINIMUM 8" CLEARANCE FROM TOP OF REGULATOR TO TOP OF ENCLOSURE.
1. 11. PRESSURE REGULATOR ASSEMBLY INSTALLATION NOT PERMITTED TO BE INSTALLED IN FRONT YARDS OR SIDE YARDS WHERE NO FENCE OR BLOCK WALLS EXIST.



UPDATED TITLE BLOCK, LOGO, LINE WORK AND FONT

**REGULATOR ASSEMBLY INSTALLATION DETAIL**  
NOT TO SCALE

REVISIONS				APPROVALS			EASTERN MUNICIPAL WATER DISTRICT		EASTERN MUNICIPAL WATER DISTRICT STANDARD DRAWING		
NO.	DATE	INITIAL	DESCRIPTION	APP'D	DATE	DESIGN			INITIAL	DATE	<h2 style="margin: 0;">4" &amp; 6" PRESSURE REGULATOR ABOVE GROUND INSTALLATION</h2>
						CONSTRUCTION			<h1 style="margin: 0;">SHEET 2 of 2</h1>		
						INSPECTION	<i>CD</i>	7/14/05			
1	3/10/22	GS	UPDATED TITLE BLOCK, LOGO, LINE WORK, FONT, REG. CONFIG. ADDED SECOND SHEET FOR PLACEMENT DETAILS AND NOTES	<i>AGA</i>	3/10/22	OPERATIONS	<i>KG</i>	7/15/05	<h1 style="margin: 0;">B-932</h1>		
						SUBMITTED	<i>VJB</i>	7/18/05			
REFERENCES: SUPERCEDES B-368				SCALE: NONE		<b>RECOMMENDED</b>		APPROVED <i>Charlie Bachmann</i> 10/11/05 <small>ASSISTANT GENERAL MANAGER DATE</small>			
FILE I.D.: \kauai\eng\std dwgs\B-932.dgn				DRAWN BY: CM							