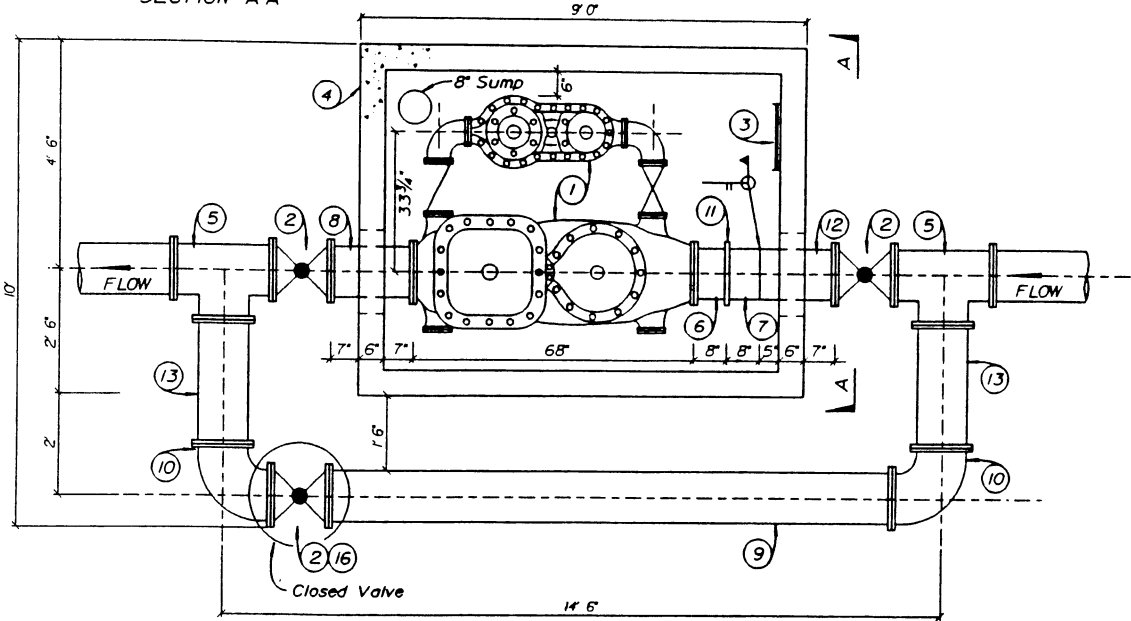


SECTION A-A



△ (ALL LISTED MATERIALS TO BE E.M.W.D. APPROVED)

MATERIAL LIST

- ① 1ea. 10" x 12" Detector Meter with 6" Compound Bypass △
- ② 3ea. 12" Resilient Seat Gate Valve
- △ ③ 1ea. Ladder per B-519 or B-520
- △ ④ 1ea. 0' x 6' x 6'-6" DEEP VAULT W/BASE & TORSION SPRING ASSISTED TWO-PIECE parkway cover hinged S.A. 20" x 36" K.O. centered 24" from one side of inside vault each end. (SECTION A-A)
- ⑤ 2ea. 12" Flanged Tee
- ⑥ 1ea. 12" x 8" Flanged Vitaulic Nipple
- ⑦ 1ea. 12" x 8" Vitaulic Nipple x Plain
- ⑧ 1ea. 12" x 20" Flanged Spool
- ⑨ 1ea. 12" x 11'-4 3/8" Flanged Spool (to be adjusted in field)
- ⑩ 2ea. 12"-90° Flanged Elbow
- ⑪ 1ea. 12" Vitaulic Coupling
- ⑫ 1ea. 12" x 18" C.M.L. & C. Flanged x Plain
- ⑬ 2ea. 12" x 30" Flanged Spool
- ⑭ 3ea. Meter "Read Hole" Cover A-496
Read Holes are to be positioned over meter registers after meters are installed.
- ⑮ 2ea. Valve can. riser and cap per A-492
- ⑯ 1ea. Valve can. riser and cap per A-492 with locking device
- ⑰ ~ Meter Support as required
- ⑱ ~ Bolts and gaskets as required

NOTES

- △ 1. Vault lid to be primed and painted E.M.W.D. approved Tan.
- △ 2. METER REGISTERS TO READ IN CUBIC FEET.
- 3. All C.M.L. & C. Pipe to meet E.M.W.D. Specifications 15061.
- 4. Backflow prevention device per B-597 will be required.
- 5. Meter must be set in a horizontal position and have at least eight diameters of straight pipe at Inlet end.

FLOW: 1 1/2 G.P.M. - 5400 G.P.M.

FILE 10-

REVISIONS					REFERENCES			SCALE	N.T.S.	DATE	EASTERN MUNICIPAL WATER DISTRICT RIVERSIDE COUNTY, CALIFORNIA			W.O.
NO.	DATE	INITIAL	DESCRIPTION	APP'VD							STANDARD DRAWING 10" x 12" DETECTOR METER WITH 6" COMPOUND BYPASS			C.O.
△	4-8-94	KER	ADDED NOTES & REVISED MATERIALS LIST	VJB				DESIGNED	J.J.W.	3-2-90				COORD.
								DRAWN (CADD)	J.J.W.	3-2-90				SHT. 1 OF 1
								TRACED						
								CHECKED	S.K.D.	3-5-90				
								SUBMITTED						
								RECOMMENDED	<i>Joe King</i>					
								DESIGN	VJB					
								OPER.						
								CONST.						
								R/W						
											APPROVED <i>William E. Plummer</i> 3-9-90			B-654
											DATE			