



Drought Workshop:

Statewide Watering Ban of Nonfunctional Turf for Commercial, Industrial & Institutional (CII) Customers - Homeowners Association Compliance

November 2, 2022



EMWD Overview

ESTABLISHED IN

1950



SERVES:



WATER / WASTEWATER / RECYCLED



558

SQUARE MILE
SERVICE AREA



WHOLESALE

&

RETAIL



CURRENTLY
BUILT OUT

APPROXIMATELY

38%

POPULATION NEARLY:

1,000,000

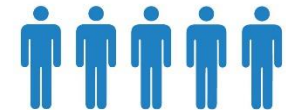


26



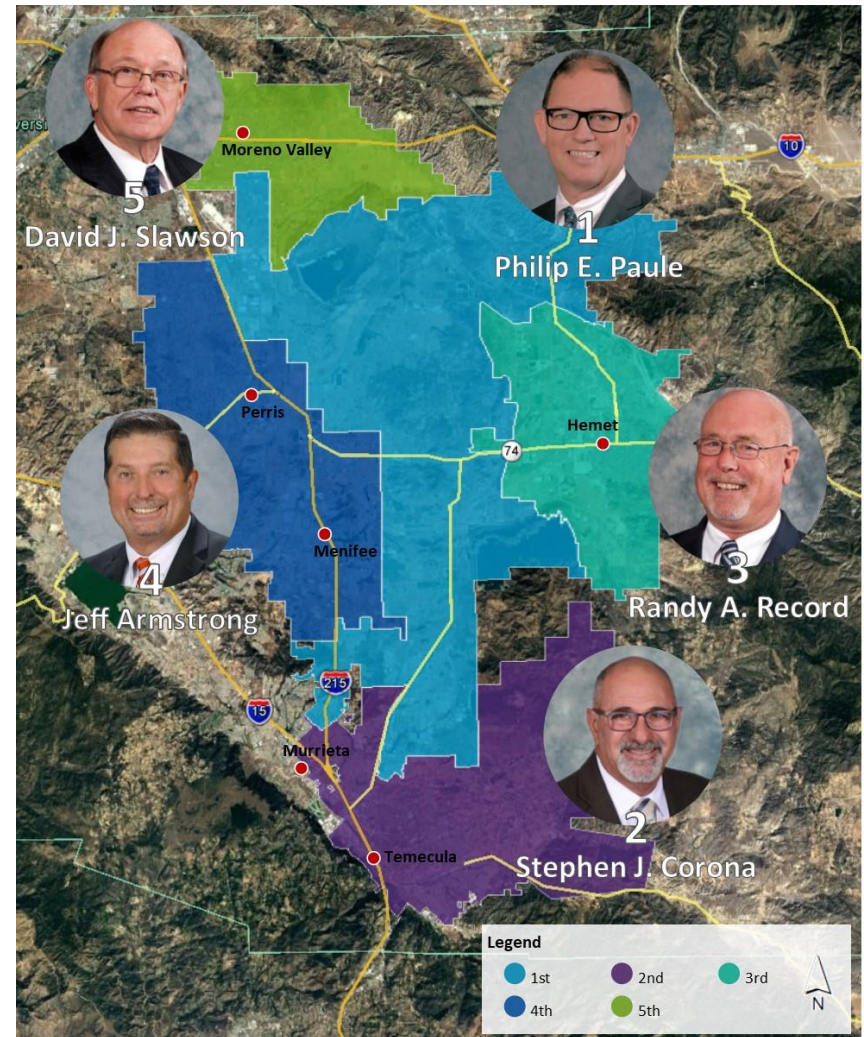
member agencies
of The Metropolitan
Water District of
Southern California

ONE
OF THE



About EMWD

- Five division publicly-elected Board of Directors
- More than 600 employees
- Annual budget of \$465 million for FY 2022-23
- Five-year capital program of \$712 million for FY 2022-223 to FY 2026-27
 - More than 180 active capital projects
 - Estimated \$104 million in external funding
- Sixth largest public water utility in California



EMWD's Service Area

- Moreno Valley to Temecula
- Seven cities and the unincorporated areas
- One of 26 member agencies of The Metropolitan Water District of Southern California (MWD)
- EMWD Representative to MWD:
 - Randy Record



Core Services



DRINKING WATER

- Approximately 159,000 accounts
 - 82,395 acre feet sold in FYE 2021
 - Imported water from State Water Project and Colorado River Aqueduct
 - Groundwater wells (adjudicated basin)
 - Menifee and Perris brackish desalters



WASTEWATER

- Approximately 263,000 accounts
 - Four operating regional water reclamation facilities
 - 74 million gallons per day capacity
 - 47 millions gallons per day average

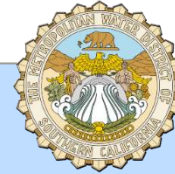
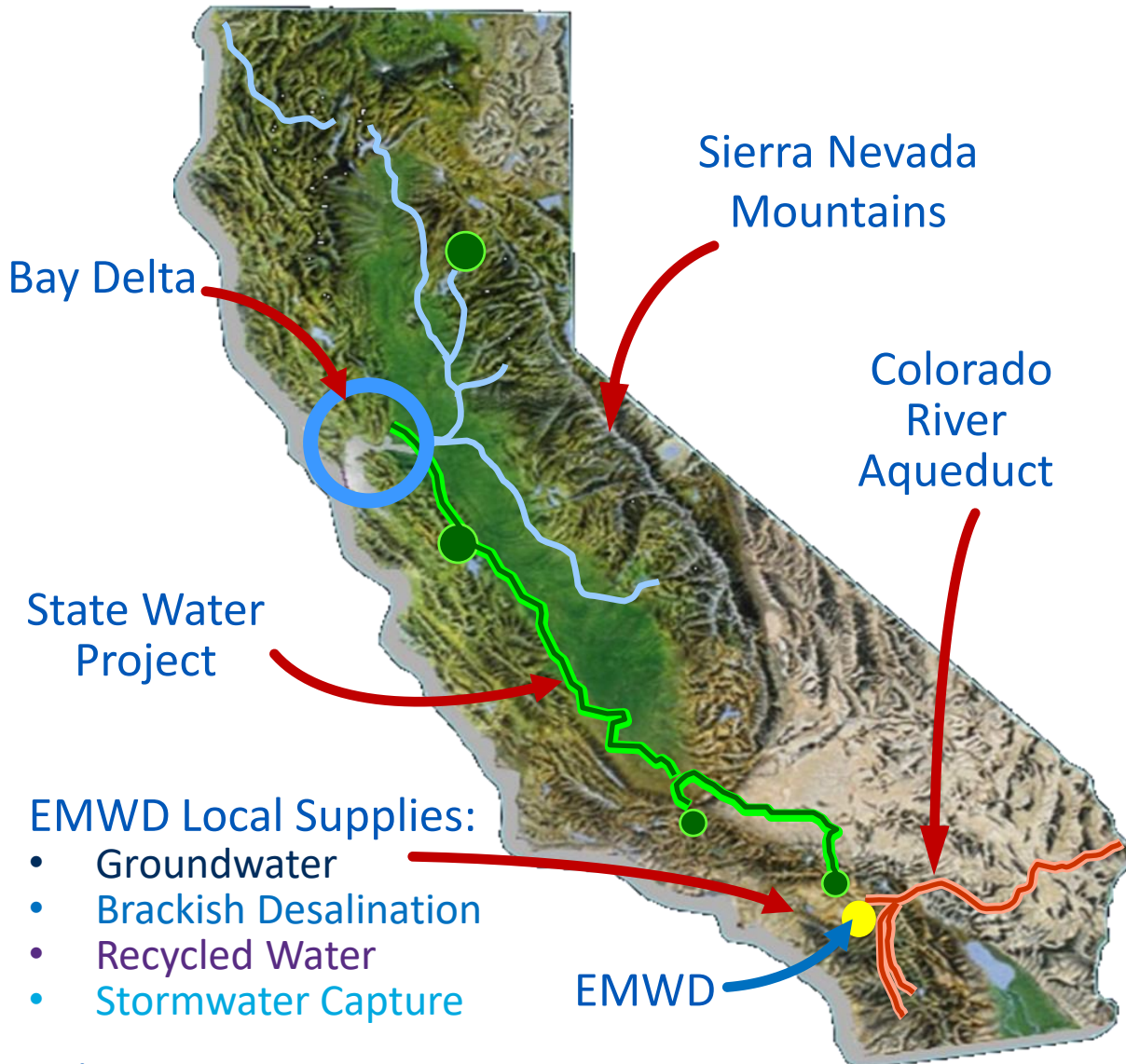


RECYCLED WATER

- Approximately 686 accounts
 - 33,745 acre feet sold in FYE 2021
 - Extensive agricultural irrigation, municipal irrigation, and environmental use



Sources of Water

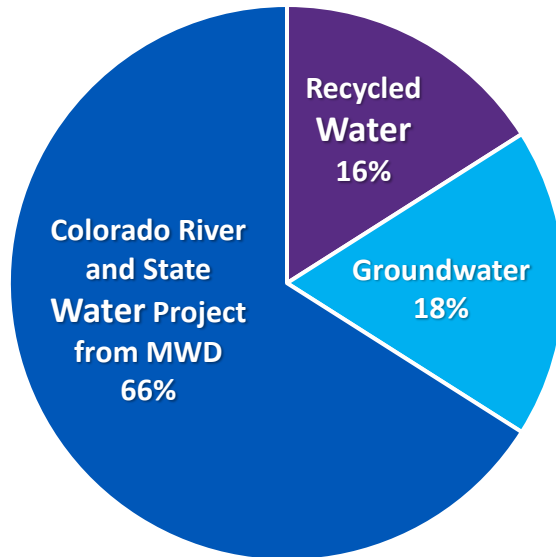


- 26 member agencies
- Owns Colorado River Aqueduct
- State Water Project Contractor
- Imports water to meet half of Southern California retail demands
- Typical demands: 2.1 MAF
- Demand forecast in FY 21/22: 1.77 MAF

Water Supply Portfolio

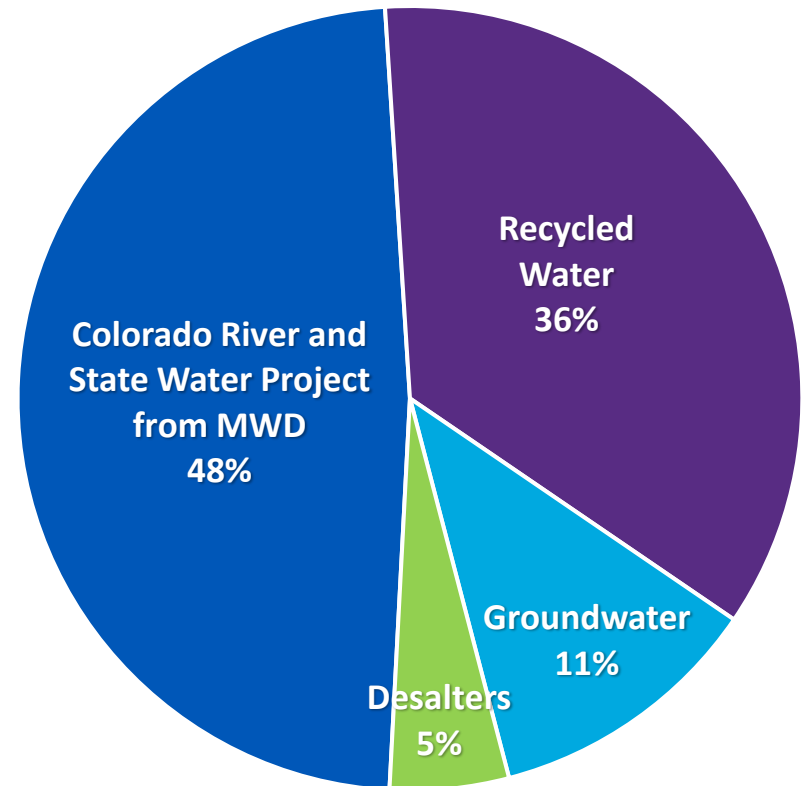
1990

Population served: 358,000



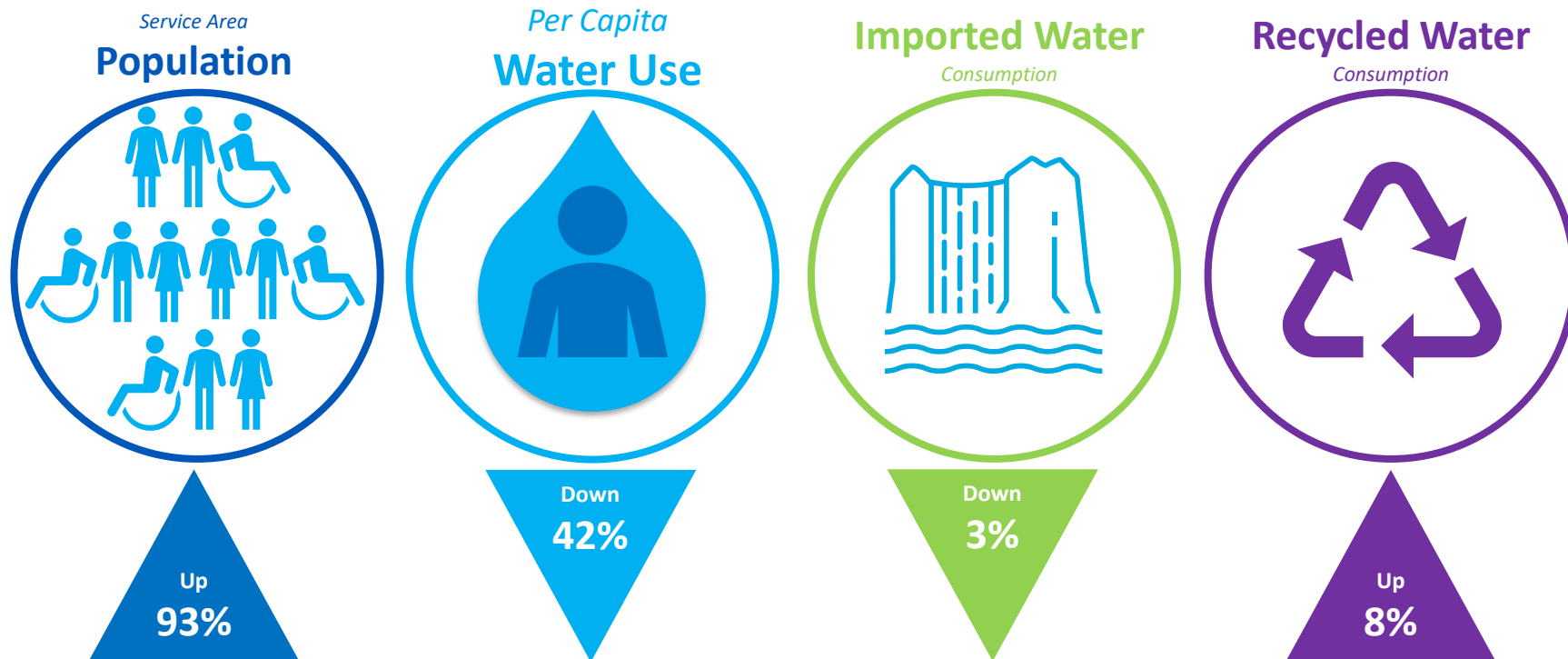
2021*

Population served: 870,500



*Total Water Supply: 147,734 AF per EMWD Annual Comprehensive Financial Report, FYE 2021

Progress Since the Year 2000





California Drought Status



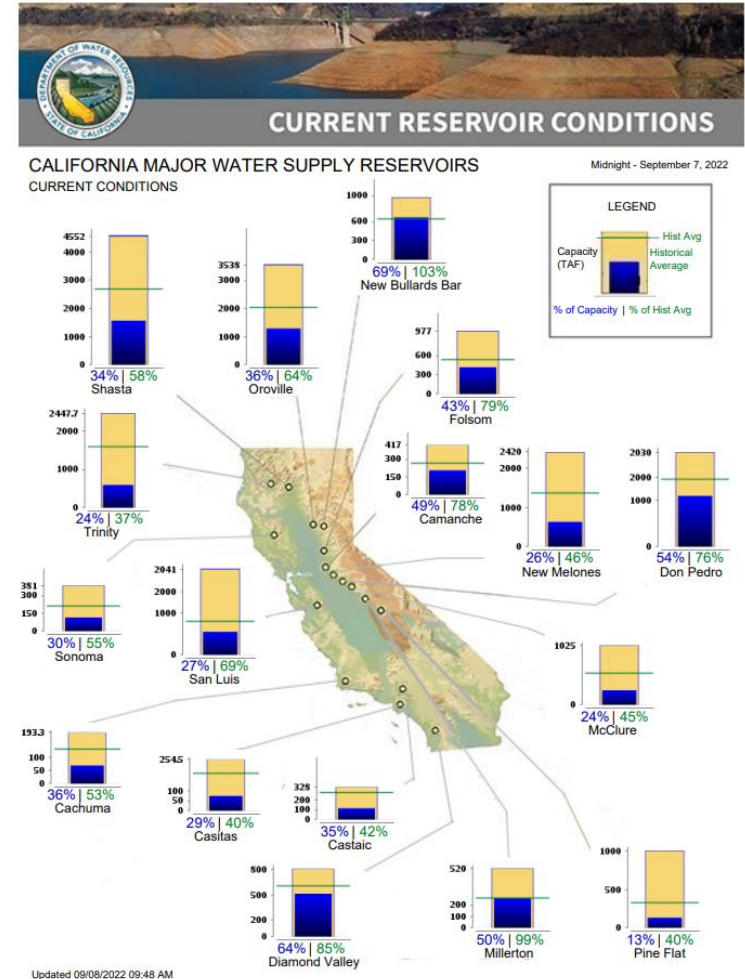
Statewide Drought Conditions

- 100 percent of California is in “moderate” or worse drought conditions
- 2020-2021 was the hottest two year stretch on record
- 2022 is driest start to any calendar year on record



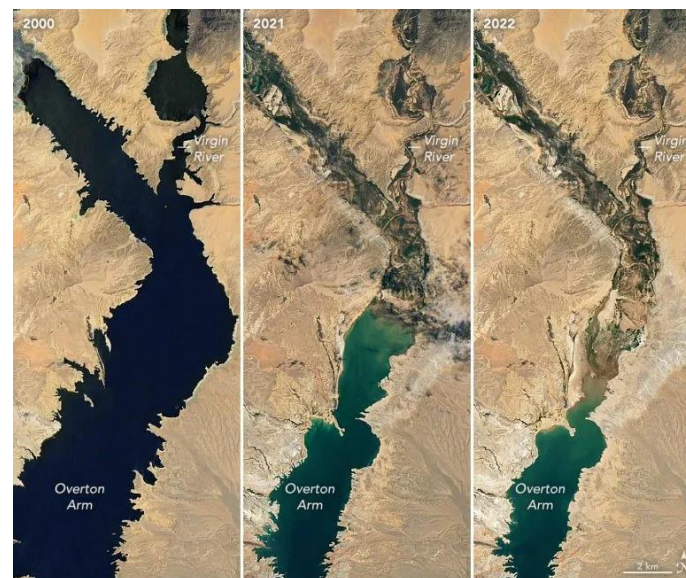
Status of California's Water Supply Sources

- State Water Project currently at 5 percent allocation
- Major reservoirs still well below historic averages
- 2020-2022 is the lowest consecutive three-year runoff total in history
- 50 percent of statewide rainfall typically occurs in January through March
 - January 2022: 14 percent of normal
 - February 2022: 4 percent of normal
 - March 2022: 16 percent of normal



Colorado River Supply

- Lake Powell elevation has fallen to its lowest level since it was first filled
 - Full power production elevation: 3525 ft
 - Current elevation: 3539 feet
- Lake Mead currently at 1044 feet elevation
 - Elevation in 2021: 1084 feet
 - At 1045 feet, MWD starts losing access to water stored in Lake Mead
 - At 1025 feet, MWD loses all access to water stored in Lake Mead
- USBR reduced deliveries from Lake Powell



Reservoir	Capacity	Percent Full
Lake Powell	6.41 MAF	28%
Lake Mead	7.12 MAF	27%

New Water Supply Challenges

- Snowpack in Upper Colorado River Basin is 90 percent of normal
- Runoff for Upper Basin is 71 percent of normal
- Climate change is resulting in earlier spring blooms, further reducing runoff into reservoirs
- Warmer springs are resulting in faster snow melt and evaporation
- California is becoming more dependent on atmospheric rivers for its rain and snow
- Development of new facilities is critical toward managing the “new normal”



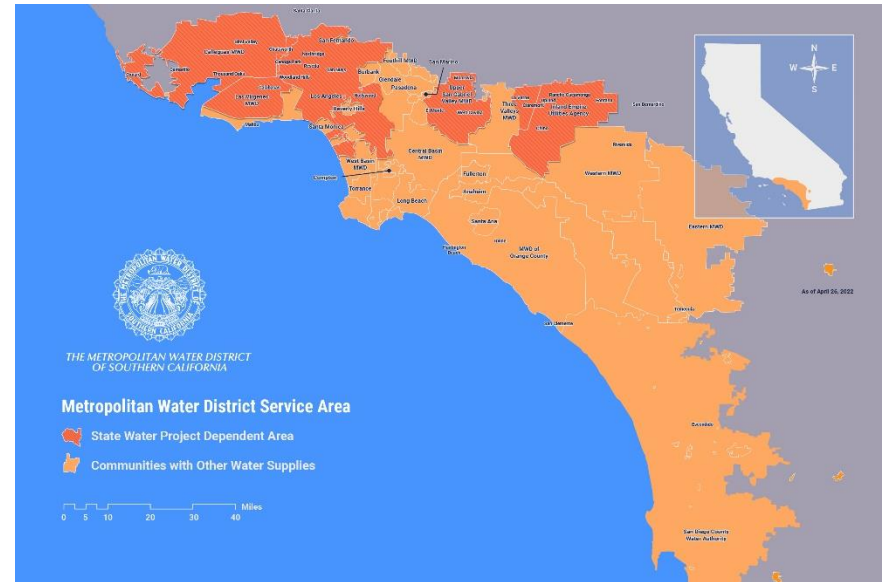


Drought Response



Regional Drought Response

- MWD Emergency Water Shortage declared on April 26, 2022
- Areas most dependent on State Water Project may have restricted watering beginning days or are taking measures to reduce overall volumetric use
- These regulations do NOT currently apply to EMWD
- MWD could expand regulations if water supply savings are not achieved by Fall 2022



EMWD Drought Response Actions

- **EMWD is in Stage 3a of its Water Shortage Contingency Plan**
 - Voluntary reduction of up to 25 percent encouraged through water use efficiency requirements such as:
 - No variances or adjustments for filling swimming pools, establishing new landscapes, or leaks not repaired within 48 hours
 - Customers are encouraged to remain within their water budgets
- Upgraded water usage/billing system includes water use tracking capabilities to assist customers in understanding their water use and staying within their water budget
- Focus is on outdoor irrigation
- Offering up to \$3 per square foot rebate through EMWD and regional programs to remove turf
 - EMWD's customers have removed millions of square feet of non-functional turf over the past decade
- Supporting Commercial, Industrial, and Institutional (CII) customers
 - Compliance with statewide regulations on outdoor irrigation of nonfunctional turf



State Ban on Irrigation of Nonfunctional Turf



State Board Regulations

- In May 2022, the State Board passed regulations prohibiting irrigation of nonfunctional turf
 - Applies to Commercial, Industrial, and Institutional (CII) properties irrigated by potable water
 - Allows irrigation of turf on the same valve as trees, shrubs, and other perennial plants
 - Excludes residential customers
 - Excludes parks, sports fields, and other turf used for recreation
 - Excludes landscapes irrigated with recycled water
 - Excludes turf that is certified as a low water use variation meeting certain requirements



What is Nonfunctional Turf?

- Non-functional turf is a ground cover surface of mowed grass that is ornamental and not otherwise used for human recreation purposes
- Non-functional turf does not include school fields, sports fields, and areas regularly used for civic or community events



How to Comply?

- Direct landscapers to shut off irrigation to all eligible nonfunctional turf, but continue irrigating trees, shrubs and other perennial plants
 - EMWD can provide template letter to send to landscape personnel
- Take advantage of EMWD's rebates and programs
 - Commercial and Multi-Family Drip Rebate
 - Landscape Irrigation Survey
 - Large Commercial Landscape Program
 - SoCal Water\$mart Rebates
 - Turf grass replacement
 - Water Savings Incentive Program
 - Recycled Water Accelerated Retrofit Program



Homeowners Association Information

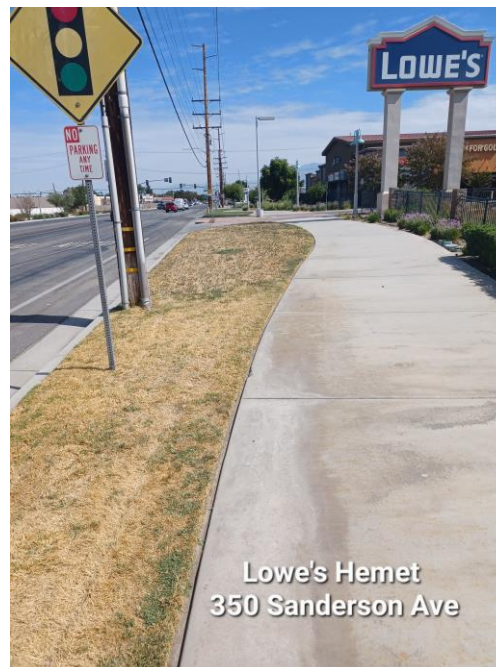
- Homeowners Associations cannot enforce guidelines that prohibit the use of drought-tolerant plants or the use of synthetic turf as a replacement for existing grass
- An HOA may not issue a fine for reducing or eliminating irrigation of grass during a state or local drought emergency
- HOAs cannot enforce guidelines that prohibit compliance with local water-use efficient landscape ordinances
- Statewide regulations prohibit runoff of water onto sidewalks and other areas, including from pressure washing homes and driveways



CII Response to Call to Action So Far

- 62 percent of accounts with nonfunctional turf have reduced water use
- 155 “Doing Our Part” signs have been distributed to customers who have shut off irrigation to nonfunctional turf
 - Mount San Jacinto College
 - Perris Unified School District
 - Valley-Wide Parks and Recreation
- Customers continue to sign up for EMWD services or rebates
 - CII and MF Drip Program: 31,000 sf converted from spray to drip
 - Large Landscape Voucher Program: 35 irrigation controllers installed representing a total of 1,254 stations

Examples of CII Customers “Doing Their Part”



WaterWise Landscape Transformations

- By transforming landscaping to be more sustainable, businesses can contribute to immediate drought relief and long-term water resilience, while also achieving corporate sustainability goals, cutting costs and providing additional benefits to the community



WaterWise Landscape Transformations (continued)



WaterWise Landscape Transformations (continued)



What Can Residential Customers Do?

- Residential customers are encouraged to focus efforts on **outdoor irrigation**
 - EMWD’s Landscapes for Living program offers resources, including device rebates, sample landscape plans, and much more
 - Reducing irrigation times by 2 minutes for every 10 minutes of run time will provide significant savings while maintaining plant health
 - Customers are encouraged to maintain trees, shrubs and other plants
 - One of the easiest ways to save water is removing turf! EMWD offers a \$3 per square foot rebate

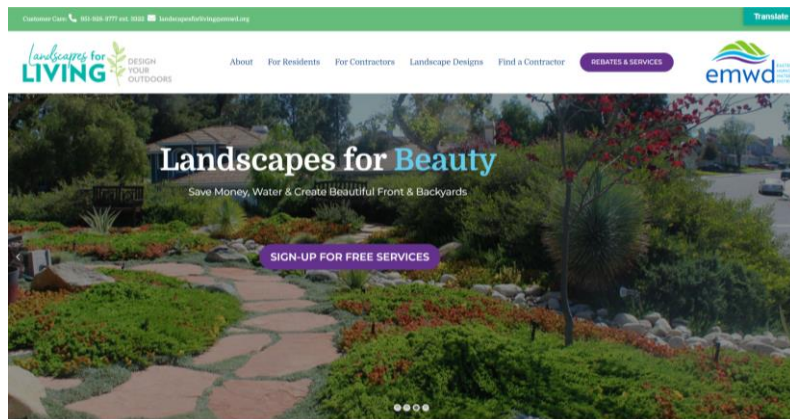


What Can Residential Customers Do?

Landscapes for Living Program

- Resources, including device rebates, sample landscape plans, and much more!

landscapesforliving.emwd.org



SoCal Water\$mart Rebates

- Rebates available as part of EMWD's partnership with MWD can be accessed through [SoCal Water\\$mart](http://SoCal Water$mart).



We Want to Hear From You

- Tell us how you Stay WaterWise with your outdoor water use efficiency. This is how we save water, together.

www.emwd.org/how-we-save-water





Next Steps



EMWD Actions

- Identifying areas with nonfunctional turf being irrigated with potable water and notifying customers subject to irrigation ban
- Encouraging all customers to remove or reduce areas of nonfunctional turf
- Adjusting water budgets to enforce State ban on irrigation of nonfunctional turf for CII customers
 - Effective December 1, 2022
 - All CII water budgets with a Conservation Factor (CF) of 70 percent will be reduced to 50 percent
 - The CF adjusts the amount of evapotranspiration (ET) assigned to the irrigated area
 - ET is the amount of water required to maintain turf grass based on daily weather information
 - A landscape with less turf grass and more low-water landscaping along with more efficient irrigation systems can be maintained on a lower CF
 - All new construction connected after June 2015 are assigned 50 percent of ET

Anticipated Future Actions

- EMWD will be conducting site visits to confirm compliance
 - Progressive fines could be issued for continued noncompliance
- Metropolitan Water District of Southern California adopted a resolution encouraging cities to adopt permanent ordinances prohibiting installation and irrigation of nonfunctional turf
- Anticipated that the State Water Resources Control Board will consider a permanent ban on irrigation of nonfunctional turf



Contact Information

Joe Mouawad, P.E.
General Manager
(951) 928-3777

mouawadj@emwd.org

Lanaya Voelz Alexander, P.E.
Assistant General Manager
(951) 928-3777

alexandl@emwd.org