



emwd.org/stay-waterwise

Eastern Municipal Water District
2270 Trumble Road
Perris, CA 92570



WaterWise FEATURES



IRRIGATION SYSTEM

Drip lines and emitters were used along with smart controllers, moisture sensors, rain sensors and flow sensors. Visit emwd.org/waterwise-landscape-toolbox for Programs and Rebates.

GARDEN HARDSCAPE

An assortment of hardscape materials add to the variety of textures and colors found in the garden. The patio area features permeable paver stones, which provide a solid surface while allowing rain to soak through.



ADDITIONAL RESOURCES



UCCE Riverside County Master Gardener Program

Master Gardener Volunteers are ready with answers <https://mg.ucanr.edu/>
Hotline: (951) 683-6491
Email: anrmgriverside@ucanr.edu

EMWD WATERWISE LANDSCAPE TOOLBOX

EMWD provides a number of resources to help you plan or maintain your water-efficient landscape!

<https://www.emwd.org/waterwise-landscape-toolbox>



WaterWise TIPS!

Simple ways to save water, and use it wisely.



Reduce or remove grass and replace it with *WaterWise* landscaping that uses up to 50 percent less water! If you require a functional play area

for children or pets, consider a more drought tolerant variety of grass such as Saint Augustine or Hybrid Bermuda, or a ground cover such as Phyla Nodiflora, also known as Lippia. Fertilizers increase water consumption. Apply the minimum amount of fertilizer needed.



Minimize evaporation by watering between 9:00 p.m. and 6:00 a.m. Divide your watering cycle into shorter periods to eliminate runoff. Check your irrigation system frequently, and adjust sprinklers for overspray.



Use a layer of organic mulch around plants to reduce evaporation and save hundreds of gallons of water a year. Use drip

irrigation for shrubs and trees to apply water directly to the roots, where it's needed. Water your plants deeply but less frequently to create healthier and stronger landscapes. Remember to weed your lawn and garden regularly. Weeds compete with other plants for nutrients, light and water.



Install a rain shut-off device on your automatic sprinklers to eliminate unnecessary watering. Maximize on Mother Nature by directing rain gutter spouts and other runoff towards shrubs and trees, or collect and use the water for your garden.



SELF-GUIDED WALKING TOUR GUIDE



This Garden Showcases

Delightful

WaterWise Landscaping & Irrigation



WELCOME!

Water-efficient landscapes come in a variety of styles. Whether you are looking to save water or minimize maintenance, reducing turf grass and adding hardscape can significantly lower water use and decrease upkeep.



EMWD's demonstration garden was designed to showcase *WaterWise* landscaping and irrigation while serving as an educational space and landscape model for the community.



The *WaterWise* demonstration garden features California friendly plants, synthetic turf, and water-efficient irrigation systems such as drip lines and smart controllers.

All of the trees, plants, and hardscape materials were selected to provide year-round color and for compatibility with the existing soil type. The garden uses recycled water for all irrigation.



EMWD's *WaterWise* demonstration garden is located at its headquarters at 2270 Trumble Road in Perris, California.

The garden is open to the public during EMWD business hours, with self-guided tour materials available in the Main Office. In addition, guided tours may be scheduled by contacting EMWD's Public and Governmental Affairs Department at 951.928.3777 ext. 3430.



SHRUBS

	COMMON NAME	BOTANICAL NAME
01	Rockrose	Cistus Purpureaus
02	Japanese Privet	Ligustrum Japonicum
03	"Iceberg" Floribunda Rose	Rosa Spp
04	Mexican Bush Sage	Salvia Leucantha
05	Blue Chalk Sticks	Senecio Vitalis 'Serpents'
06	Coral Fountain	Russelia Equisetiformis
07	Shrub Rose	Sevillan, Rosa
08	Gopher Plant	Euphorbia Lathyris
09	Yellow Bells	Tecoma Stans
10	India Hawthorn	Raphiolepis Indica
11	Little John	Dwarf Callistemon
12	Red Yucca	Hesperaloe Parviflora
13	Rosemary	Westringia 'Wynyabbie' Gem
14	Sea Lavender	Limonium Carolinianum
15	Firethorn	Pyracantha
16	Thompson Seedless Grapes	Sultanina
17	Red Kangaroo Paw	Anigozanthos
18	Texas Ranger	Leucophyllum Frutescens
19	Red Hot Poker	Kniphofia
20	Deer Grass	Muhlenbergia Rigens
21	Pink Muhly	Muhlenbergia Capillaris
22	California Holly	Toyon

TREES

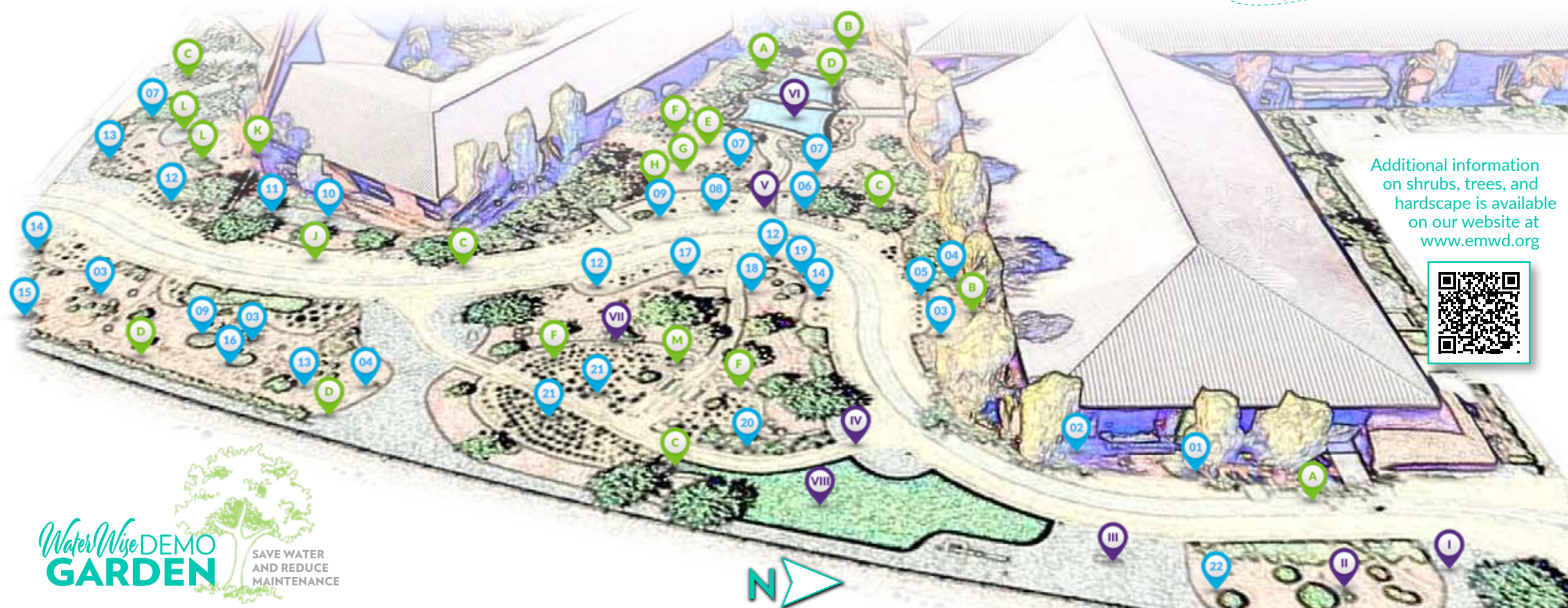
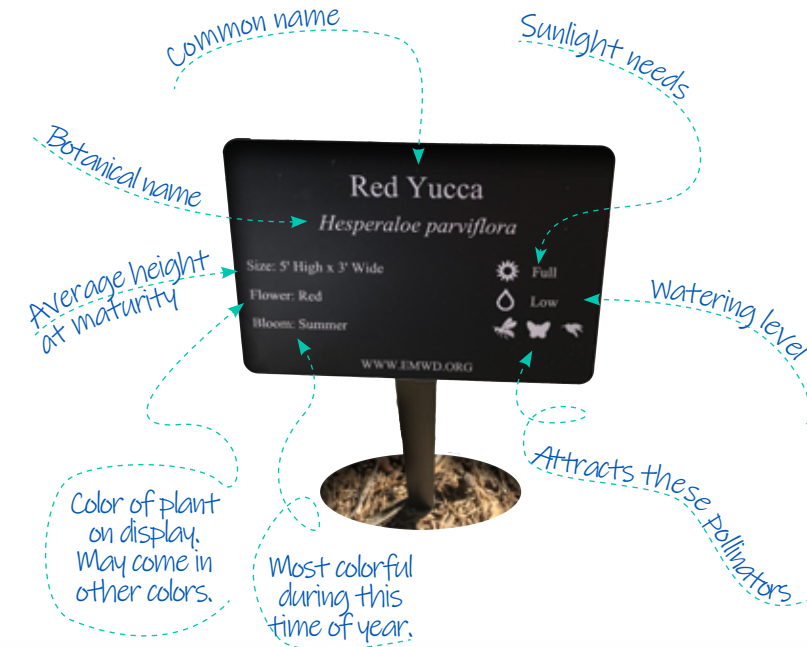
	COMMON NAME	BOTANICAL NAME
A	Shoestring Acacia	Acacia Stenophylla
B	Red River Gum	Eucalyptus Camaldulensis
C	Arizona Ash	Fraxinus Velutina
D	Olive	Olea Europaea
E	Dwarf Tea Tree	Leptospermum Laevigatum 'Reevesii'
F	Coast Live Oak	Quercus Agrifolia
G	Western Redbud	Cercis Occidentalis
H	Eastern Redbud	Cercis Canadensis
J	Cork Oak	Quercus Suber
K	Purple Plum	Prunus Cerasifera
L	Citrus	Rutaceae
M	Sycamore	Platanus Racemosa

HARDSCAPE

	MATERIAL	SPECIFICATIONS
I	River Rock	Granite River Cobble
II	Crushed Rock	Desert Spice
III	Boulder	Navajo Boulders
IV	Compacted Dirt Path	Decomposed Granite
V	Walkway Edging	Poured Concrete
VI	Concrete and Paver Patio	Stamped and Permeable
VII	Bark Mulch	Cedar Wood Brushed Mulch
VIII	Artificial Turf	Synthetic Fibers with Infill

READING THE SIGNS

Trees and shrubs located adjacent to the pathways are marked with identification signs providing greater detail on each plant. The signs are customized with growth rate, sunlight and watering needs, and the type of pollinators they attract. Here is a quick primer on what to look for, and how to get the most out of our signs!



Additional information on shrubs, trees, and hardscape is available on our website at www.emwd.org

