



INVESTING IN OUR FUTURE

Infrastructure Maintenance and Improvements

Keeping water, wastewater, and recycled water services available for your home and business

EMWD is future-focused. We plan for and construct state-of-the-art facilities and infrastructure in order to meet the dynamic and growing water, wastewater, and recycled water delivery needs of our 558 square mile service area. Our extensive planning, design, and construction process helps make sure EMWD can provide safe, reliable, economical, and environmentally sustainable services. See what we're working on at emwd.org/construction-updates.

INSIDE THIS ISSUE

Past, Present, and Future Investments

EMWD is planning for the future by making continued investments in its infrastructure.

Winter Outdoor Watering

Winter is no time to overwater. Learn how you can use the cooler weather to stay within your water budget.

Ask EMWD: Why Do We Have Water Tanks?

Millions of gallons of water sit in tanks on hilltops throughout our service area. Learn why we pump water up to these high places.

When it comes to funding infrastructure, EMWD is proud to have a sophisticated system in place that helps support new and existing pipelines, treatment facilities, pump stations and so much more. Each of these funding sources form a piece of the puzzle that helps build the infrastructure that provides you with safe and reliable water service at your home or business.



PIECING IT TOGETHER: INFRASTRUCTURE FINANCING



INFRASTRUCTURE AVAILABILITY CHARGE/ASSESSMENT



EMWD collects fees through property taxes that help fund the construction and expansion of infrastructure, and to help maintain facilities.



The property tax assessment is to equitably share the cost of having reliable water and wastewater service available to all properties in EMWD's service area.



Preventative and predictive maintenance enables highly reliable operations.



CAPITAL PROJECTS CHARGE



Customers pay a nominal daily charge on their bills to support the replacement and refurbishment of water and sewer infrastructure.

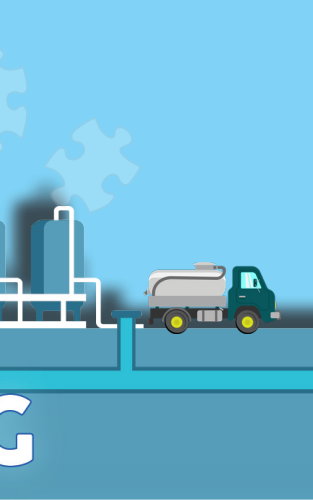
This capital project charge allows EMWD a funding source to proactively invest in its existing infrastructure so that catastrophic failures can be prevented.



Available 24 hours a day, 7 days a week for emergency situations.



Funding infrastructure replacements and refurbishments over time, in a balanced manner, to avoid rate spikes.





CONNECTION FEES



GRANTS AND LOANS

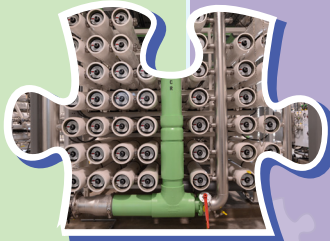


When new homes and businesses connect to EMWD's system, they pay a Financial Participation Charge (FPC). This fee allows EMWD to fund new or expanded facilities that help supply services to new homes.



EMWD's San Jacinto Valley Raw Water Pipeline. Scheduled for completion in late 2022.

Funding from connection fees help pay for the development of new water supply facilities such as the Perris II Desalter to meet the needs of new homes in the community.



EMWD's Perris II Desalter, completed June 2022.



EMWD is among the most successful agencies in the nation in securing grants and low-interest loans. In 2022, we received \$99 million in funding commitments to support a wide range of projects.



President Phil Paule and General Manager Joe Mouawad, Washington, D.C. Nov. 2022.

By securing local, state and federal grants, EMWD is helping bring your tax dollars back into your community to improve services and quality of life. Recent projects funded in-part by grants include the Perris II Desalter, our Perris North Groundwater Program, the future expansion of sewer service in Temecula's Wine Country, and more.



2270 Trumble Road
P.O. Box 8300
Perris, CA 92572-8300
www.emwd.org

EMWD Main Phone Number:
951.928.3777

EMWD Customer Service:
800.426.3693

Job Hotline: ext. 3300

Conservation Hotline: ext. 3322

Water Quality: ext. 3327

Systems Outages, Trouble Calls:
ext. 6265 or 800.698.0400

Public and Governmental Affairs:
ext. 3430
PublicandGovtAffairs@emwd.org

EMWD publications are designed to keep EMWD's customers and the public informed of matters affecting them.



30902-I-0149

WOW Your Landscaping

Shorter days with less intense sunlight mixed with colder nights and more moisture in the air means your landscape doesn't need very much water. Take advantage of the weather by preparing your yard for Winter Outdoor Watering—WOW!

- **Let Mother Nature do the work for you:** direct rain gutter spouts and other runoff towards shrubs and trees, or collect and use the water for your garden, emwd.org/waterwise-tips
- **Install a FREE Weather-Based Irrigation Controller:** for every quarter-inch of rain you can stop watering outdoors for at least one week, emwd.org/landscapes-living
- **Water between 9:00 p.m. and 6:00 a.m.:** take advantage of the longer nighttime hours to minimize evaporation, emwd.org/waterwise-landscape-toolbox
- **Reduce or remove nonfunctional turf:** if the only time you walk on it is to mow, it's nonfunctional, emwd.org/social-watersmart

EMWD provides a number of resources to help you plan and maintain your water-efficient landscape, visit emwd.org/stay-waterwise



I see water storage tanks on hillsides throughout the community. What purpose do those serve?

EMWD has nearly 80 storage tanks throughout its service area, but did you know their main role is different than most people expect?

These tanks – which hold millions of gallons of water apiece – are often nestled into hillsides and painted to blend in with their surroundings. They are placed on hills at specifically designed elevations to pressurize our water system, allowing you to receive the right amount of water pressure delivered to your home or business.

This is the same reason why many water tanks in flat areas, such as the Midwest, are built on stilts – so there is enough gravity to create the pressure needed for water delivery and use.

So the next time you pass by a hill and manage to spot one of our tanks high above your community, you can be sure it is doing its job by helping to keep our system running as it should.

Submit your question at emwd.org/AskEMWD for a chance to have it featured in a future monthly EMWD newsletter!

