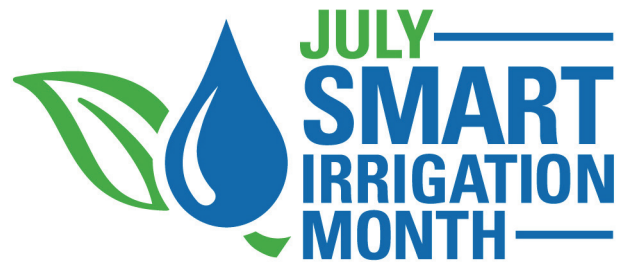


Summer is upon us! Stay water savvy and budget conscious with these tips from EMWD.



During the month of July, EMWD joins water agencies across the nation to promote Smart Irrigation Month and help customers to be more efficient with outdoor water use.

Outdoor water use accounts for more than 60 percent of all of the water used throughout EMWD's service area. EMWD encourages you to maintain your water use efficiency habits and stay budget conscious, saving water and minimizing water bill increases.

EMWD offers a number of rebates to assist customers in using water as efficiently as possible. These rebate opportunities include weather-based irrigation controllers, rotating sprinkler nozzles, drip retrofit kits and much more.

For more rebate information, visit emwd.org/Rebates.



WHAT'S INSIDE?

Home Water Surveys	Page 2
Irrigation/Landscape Tips	Page 2
Landscape Contest	Page 3
Sign Up for Continuous Usage Notifications	Page 4
Water Quality Report Now Available	Page 4
Contact EMWD	Page 4

FOR RESIDENTIAL CUSTOMERS:

FREE Home Survey Finds Opportunities for Both Water and Money Savings

EMWD offers a FREE Home Water Survey for residential customers who are having trouble staying within their water budget. This is a comprehensive 45-minute indoor/outdoor survey designed to help check for leaks, provide a recommended irrigation schedule, check your irrigation system for inefficiencies and provide customers with rebate information on water efficient kits and devices.

To schedule your FREE Home Water Survey, email info@waterwise-consulting.com. You may also contact EMWD's Conservation department at 951.928.3777, ext. 3322, or visit emwd.org/Rebates.



CHECK FOR LEAKS

RECOMMEND IRRIGATION SCHEDULE

REBATE INFORMATION

LANDSCAPE INDUSTRY Improving Irrigation Efficiency

9 billion

gallons of water per day is used for residential outdoor water use.

25,000

gallons of water could be wasted in one six-month season by having just one broken sprinkler head.

As much as

50%

of the water we use outdoors is wasted due to inefficient watering methods and systems.

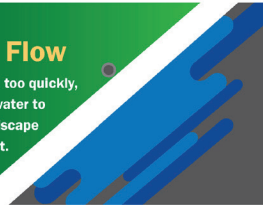


Data from United States Environmental Protection Agency



Slow the Flow

If water is applied too quickly, it can cause the water to run off of the landscape and into the street.



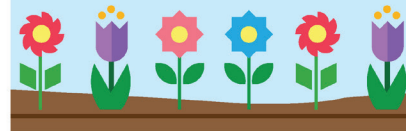
Check Sprinkler Heads

Ensure that sprinkler heads are properly placed and set-up so they aren't irrigating the sidewalk.



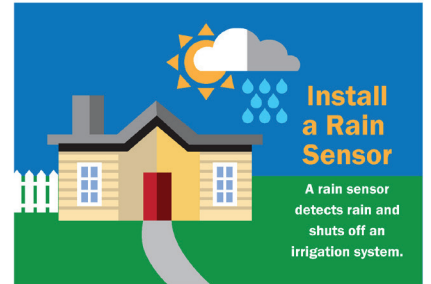
Use Low Volume Irrigation

Use drip irrigation, micro-sprinklers, or bubbler irrigation for planting beds and narrow strips of vegetation.



Install a Rain Sensor

A rain sensor detects rain and shuts off an irrigation system.



Smart Irrigation Month is an Irrigation Association initiative to increase awareness of the value of water use ... and grow demand for water-saving products, practices and services.

For more great resources, visit: www.smartirrigationmonth.com

Inland Empire Landscape Contest Recognizes Water Efficient Landscapes Throughout the Region

During the months of April and May, EMWD—along with a number of other water agencies throughout the region—promoted the 2018 Inland Empire Landscape Contest. The biennial contest gives residents the opportunity to submit their water efficient landscapes for recognition, with a chance to win a grand prize of \$1,000.

The Landscape Contest received more than 320 entries, with more than half of the entries comprised of homeowners throughout EMWD’s service area. The grand prize went to a homeowner located in Riverside, who is serviced by Western Municipal Water District, and two landscapes tied for second place—a homeowner located in Temecula, serviced by Rancho California Water District, and a homeowner located in Riverside who is serviced by Riverside Public Utilities. Rancho California Water District is one of EMWD’s retail water agencies.



Second Place Winner - Temecula, CA - Uses river rock, society garlic, cacti and more to inspire a serene, water efficient landscape.

The contest promotes water efficient landscaping and utilizes photos of the winning landscapes to inspire attractive water-wise landscaping. For more information, rules and inspiration to start prepping your landscape for the 2020 contest, visit inlandempirelandscapecontest.com.

For more water efficient landscape ideas, visit emwd.org/IELandscapeGuidebook.

EMWD REPORTS

Jul/Aug 2018

2270 Trumble Road
P.O. Box 8300
Perris, CA 92572-8300

emwd.org

Editor: Michelle Adams
Contributor: Kevin Pearson

“EMWD Reports” is designed to keep EMWD customers and the general public informed of matters affecting them. It is published every other month.

CONTACT US

EMWD Main Phone Number:
951.928.3777 or 800.426.3693

Automated Billing System:
Main number, then press 2

Job Hotline: ext. 3300

Conservation Hotline: ext. 3322

Water Quality: ext. 3327

Systems Outages, Trouble Calls:
ext. 6265 or 800.698.0400

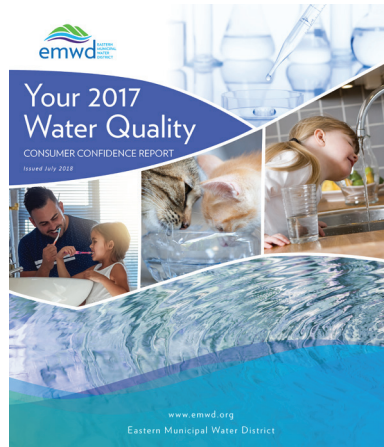
Public and Governmental Affairs:
ext. 3430
PublicandGovtAffairs@emwd.org

30902-I-0096

EMWD Keeps Customers Informed of Continuous Water Usage

In an effort to minimize continuous water usage and the negative impacts to customer water bills, EMWD encourages customers to keep their contact information and contact preferences up-to-date. EMWD customers with Smart Meters may sign up for leak detection notifications via text, email or voicemail.

To update your information and contact preferences, visit emwd.org/Update.



EMWD's annual water quality report is now available!

View the 2017 Consumer Confidence Report at emwd.org/2017ccr