

OUTLET DIMENSIONS		SADDLE SIZE	SADDLE O.D.
NOM DIA	T1 (MIN)	T2 X W	OD
4"	12 GA	5/16" X 2"	10"
6"	12 GA	5/16" X 3"	13"
8"	12 GA	3/8" X 4"	17"
12"	3/16"	3/8" X 6"	25"
14"	1/4"	3/8" X 7"	29"
16"	1/4"	1/2" X 7"	31"
18"	1/4"	1/2" X 8"	36"
20"	1/4"	1/2" X 9"	40"
24"	5/16"	1/2" X 10"	46"
30"	5/16"	1/2" X 12"	56"
36"	5/16"	1/2" X 14"	66"

**NOTES:**

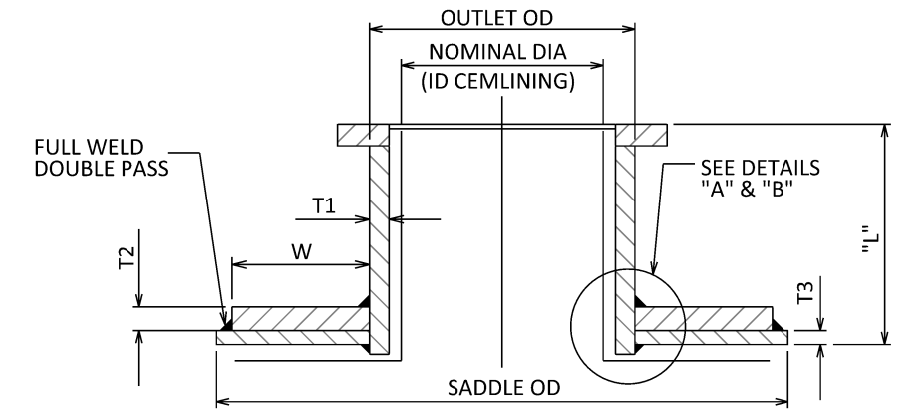
- SADDLE CURVATURE TO BE SHOP FORMED TO MEET OUTSIDE STEEL DIAMETER OF PIPE.
- AFTER SHOP WELDING OF HALF COUPLING TO CURVED SADDLE, SHOP GRIND HALF COUPLING TO MEET DIAMETER OF PIPE.

SERVICE SADDLE OUTLETS			
CORPORATION STOPS	EXTRA HEAVY HALF COUPLING SIZE	SADDLE OUTSIDE DIA	SADDLE PLATE THICKNESS
3/4" (CS)	1-1/4" (IP)	4-1/2" (OD)	3/16"
1" (CS)	1-1/4" (IP)	4-1/2" (OD)	3/16"
1-1/2" (IP)	2-1/2" (IP)	6-1/2" (OD)	1/4"
2" (IP)	2-1/2" (IP)	6-1/2" (OD)	1/4"

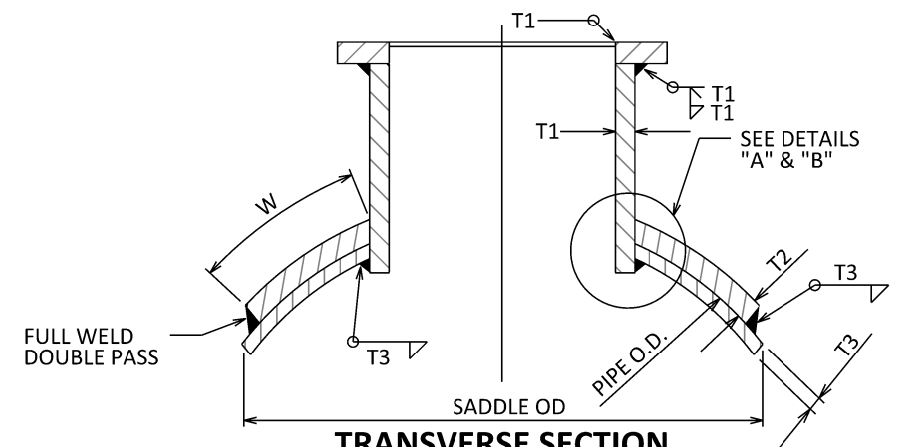
WELDED SERVICE SADDLE OUTLETS SHOWING BRONZE BUSHING FOR 3/4" THRU 2" CORPORATION STOPS

**NOTES:**

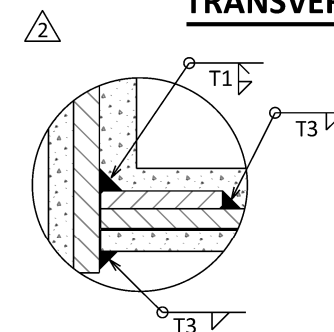
- OUTLETS ARE DESIGNED FOR A MAXIMUM TEST PRESSURE OF 225 PSI.
- ALL OUTLETS GREATER THAN 50% OF EXISTING PIPELINE WILL BE FULL WRAP SADDLE REINFORCING.
- FABRICATION SHALL BE IN ACCORDANCE WITH AWWA M-11 MANUAL, LATEST EDITION.
- ALL OUTLETS SHALL BE CEMENT MORTAR LINED AND COATED. ALL OTHER BARE METAL SHALL BE COATED WITH AN APPROVED BITUMASTIC. (PRIMER 1170 AND WRAPPED WITH PROTECTO-WRAP)
- REFER TO B-288 FOR FLANGE DIMENSIONS.
- L = 12" FOR SHOP FABRICATED OUTLETS. L = 5" MIN/6" MAX FOR FIELD INSTALLED WET TAPPED OUTLETS.
- T3 IS THE PIPE CYLINDER THICKNESS.



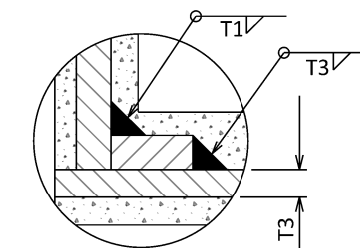
**LONGITUDINAL SECTION**



**TRANSVERSE SECTION**



DETAIL "A"  
SIZES 24" & LARGER



DETAIL "B"  
SIZES 4" THRU 20"

**PIPE OUTLETS  
SADDLE REINFORCEMENT**

REVISIONS					APPROVALS			EASTERN MUNICIPAL WATER DISTRICT STANDARD DRAWING	
NO.	DATE	INITIAL	DESCRIPTION	APP'D	DATE	DESIGN	INITIAL	DATE	SADDLE OUTLETS 3/4" TO 36" DIAMETERS
4	4/22/21	GS	UPDATED NOTE 3, ADDED NOTE 2	AGA	4/22/21	CONSTRUCTION	LVJ		
3	9/11/20	GS	UPDATED TITLE BLOCK, LOGO AND FONT	AGA	9/11/20	INSPECTION			
2	10/15/03	CM	ADDED SADDLE O.D.	VJB	10/15/03	OPERATIONS			
1	8/11/97	CRD	A-297, B-271 REDRAWN ON CAD. ADDED NOTE 6.	VJB	8/12/97	SUBMITTED	LVJ		
REFERENCES: SUPERCEDES A-297				SCALE: NONE		RECOMMENDED		APPROVED	
FILE I.D.: \\kauai\eng\std dwgs\B-271.dgn				DRAWN BY: CRD		D. C. Stewart DIRECTOR OF ENGINEERING		Doyle J. Boen CHIEF ENGINEER	
						DATE		DATE	

**B-271**

